

Product datasheet for RC211255

LRPAP1 (NM_002337) Human Tagged ORF Clone

Product data:

Product Type:	Expression Plasmids
Product Name:	LRPAP1 (NM_002337) Human Tagged ORF Clone
Tag:	Myc-DDK
Symbol:	LRPAP1
Synonyms:	A2MRAP; A2RAP; alpha-2-MRAP; HBP44; MRAP; MYP23; RAP
Mammalian Cell Selection:	Neomycin
Vector:	pCMV6-Entry (PS100001)
E. coli Selection:	Kanamycin (25 ug/mL)
ORF Nucleotide Sequence:	>RC211255 ORF sequence Red=Cloning site Blue=ORF Green=Tags(s)

TTTTGTAATACGACTCACTATAGGGCGGCCGGAATTCGTCGACTGGATCCGGTACCGAGGAGATCTGCC
GCC**CGATCGC**C

ATGGCGCCGCGGAGGGTCAGGTCGTTTCTGCGCGGGCTCCCGGCGCTGCTACTGCTGCTGCTCTTCTCG
GGCCCTGGCCCGCTGCGAGCCACGGCGGAAGTACTCGCGGGAGAAGAACCAGCCCAAGCCGTCCCCGAA
ACGCGAGTCCGGAGAGGAGTTCGCATGGAGAAGTTGAACCAGCTGTGGGAGAAGGCCAGCGACTGCAT
CTTCTCCCGTGAGGCTGGCCGAGCTCCACGCTGATCTGAAGATACAGGAGAGGGACGAACCTCGCCTGGA
AGAACTAAAGCTTGACGGCTTGACGAAAGATGGGGAGAAGGAAGCGAGACTCATACGCAACCTCAATGT
CATCTTGCCAAGTATGGTCTGGACGGAAGAAGGACGCTCGGCAGGTGACCAGCAACTCCCTCAGTGGC
ACCCAGGAAGACGGGCTGGATGACCCCAGGCTGAAAAAGCTGTGGCACAAGGCGAAGACCTCTGGGAAAT
TCTCCGGCAAGAAGCTGGACAAGCTCTGGCGGGAGTTCCTGCATCACAAAGAGAAAGTTCACGAGTACAA
CGTCTGCTGGAGACCCTGAGCAGGACCGAAGAAATCCACGAGAACGTCATTAGCCCTCGGACCTGAGC
GACATCAAGGGCAGCGTCTGACAGCAGGCACACGGAGCTGAAGGAGAAGCTGCGCAGCATCAACCAGG
GCCTGGACCGCTGCGCAGGGTCAGCCACCAGGGCTACAGCACTGAGGCTGAGTTCGAGGAGCCAGGGT
GATTGACCTGTGGACCTGGCGCAGTCCGCCAAGCTCACGGACAAGGAGCTGGAGCGTTCCGGGAGGAG
CTCAAGCACTTGAAGCCAAAATCGAGAAGCACAACTACCAGAAGCAGCTGGAGATTGCGCAGGAGA
AGCTGAGGCACGCAGAGAGCGTGGGCGACGGCGAGCGTGTGAGCCGACGCCGAGAAGCACGCCCTGCT
GGAGGGGCGGACCAAGGAGCTGGGCTACACGGTGAAGAAGCATCTGCAGGACCTGTCCGGCAGGATCTCC
AGAGCTCGGCACAACGAACCTC

ACGCGTACGCGGCCGCTCGAGCAGAACTCATCTCAGAAGAGGATCTGGCAGCAATGATATCCTGGATT
ACAAGGATGACGACGATAAGGTTTAA



[View online »](#)

Protein Sequence: >RC211255 protein sequence
Red=Cloning site Green=Tags(s)

MAPRRVRSFLRGLPALLLLLLFLGPWPAASHGGKYSREKNQPKPSPKRESGEEFRMEKLNQLWEKAQRLH
 LPPVRLAELHADLKIQRDELAWKCLKLDGLDEDGEKEARLIRNLNVILAKYGLDGKKDARQVTSNSLSG
 TQEDGLDDPRLEKLWHKAKTSGKFSGEELDKLWREFLHHKEKVHEYNVLLETLSRTEEIHENVISPSDLS
 DIKGSVLHSRHTELKEKLRINQGLDRLRRVSHQGYSTAEFEPRVIDLWDLAQSANLTDKELEAFREE
 LKHFEAKIEKHNHYKQQLAHEKLRHAESVGDGERVSRSEKHALLEGRTKELGYTVKKHLQDLSGRIS
 RARHNEL

TRTRPLEQKLISEEDLAANDILDYKDDDDKV

Chromatograms: https://cdn.origene.com/chromatograms/mk6244_h12.zip

Restriction Sites: SgfI-MluI

Cloning Scheme:



ACCN: NM_002337

ORF Size: 1071 bp

OTI Disclaimer: The molecular sequence of this clone aligns with the gene accession number as a point of reference only. However, individual transcript sequences of the same gene can differ through naturally occurring variations (e.g. polymorphisms), each with its own valid existence. This clone is substantially in agreement with the reference, but a complete review of all prevailing variants is recommended prior to use. [More info](#)

OTI Annotation: This clone was engineered to express the complete ORF with an expression tag. Expression varies depending on the nature of the gene.

Components: The ORF clone is ion-exchange column purified and shipped in a 2D barcoded Matrix tube containing 10ug of transfection-ready, dried plasmid DNA (reconstitute with 100 ul of water).

Reconstitution Method:

1. Centrifuge at 5,000xg for 5min.
2. Carefully open the tube and add 100ul of sterile water to dissolve the DNA.
3. Close the tube and incubate for 10 minutes at room temperature.
4. Briefly vortex the tube and then do a quick spin (less than 5000xg) to concentrate the liquid at the bottom.
5. Store the suspended plasmid at -20°C. The DNA is stable for at least one year from date of shipping when stored at -20°C.

RefSeq: [NM_002337.4](#)

RefSeq Size: 10536 bp

RefSeq ORF: 1074 bp

Locus ID: 4043

UniProt ID: [P30533](#)

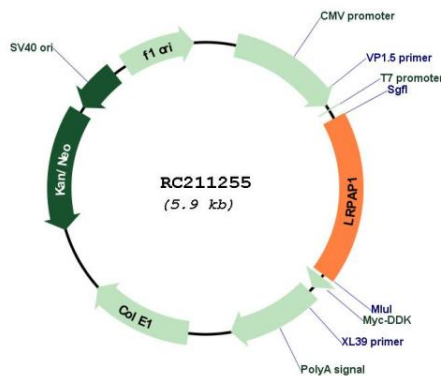
Cytogenetics: 4p16.3

Protein Families: Druggable Genome, Transmembrane

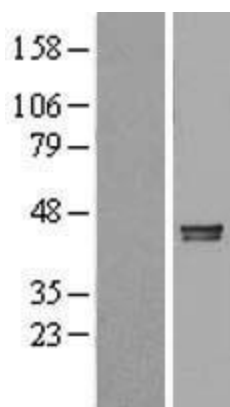
MW: 41.5 kDa

Gene Summary: This gene encodes a protein that interacts with the low density lipoprotein (LDL) receptor-related protein and facilitates its proper folding and localization by preventing the binding of ligands. Mutations in this gene have been identified in individuals with myopia 23. Alternative splicing results in multiple transcript variants. [provided by RefSeq, Dec 2013]

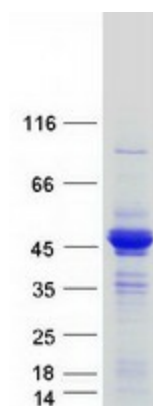
Product images:



Circular map for RC211255



Western blot validation of overexpression lysate (Cat# [LY419397]) using anti-DDK antibody (Cat# [TA50011-100]). Left: Cell lysates from untransfected HEK293T cells; Right: Cell lysates from HEK293T cells transfected with RC211255 using transfection reagent MegaTran 2.0 (Cat# [TT210002]).



Coomassie blue staining of purified LRPAP1 protein (Cat# [TP311255]). The protein was produced from HEK293T cells transfected with LRPAP1 cDNA clone (Cat# RC211255) using MegaTran 2.0 (Cat# [TT210002]).