

## Product datasheet for RC211250

### NPPC (NM\_024409) Human Tagged ORF Clone

#### Product data:

Product Type: Expression Plasmids  
 Product Name: NPPC (NM\_024409) Human Tagged ORF Clone  
 Tag: Myc-DDK  
 Symbol: NPPC  
 Synonyms: CNP; CNP2  
 Mammalian Cell Selection: Neomycin  
 Vector: pCMV6-Entry (PS100001)  
 E. coli Selection: Kanamycin (25 ug/mL)  
 ORF Nucleotide Sequence: >RC211250 ORF sequence  
 Red=Cloning site Blue=ORF Green=Tags(s)

TTTTGTAATACGACTCACTATAGGGCGGCCGGAATTCGTCGACTGGATCCGGTACCGAGGAGATCTGCC  
 GCC**CGATCGCC**

ATGCATCTCTCCAGCTGCTGGCCTGCGCCCTGCTGCTCACGCTGCTCTCCCTCCGGCCCTCCGAAGCCA  
 AGCCCGGGGCGCCGCGAAGGTCCCGCAACCCCGCCGGCAGAGGAGCTGGCCGAGCCGACGGCTGCGGG  
 CGGCGGTGAGAAGAAGGGCGACAAGGCTCCCGGGGGCGGGGCGCAATCTCAAGGGCGACCGTCCGGA  
 CTGCTCCGGGACCTGCGGTGGACCAAGTCGCGGGCAGCGTGGGCTCGCCTTCTGCAAGAGCACCCCA  
 ACGCGCGCAAATACAAAGGAGCCAACAAGAAGGGCTTGTCCAAGGCTGCTTCGGCCTCAAGCTGGACCG  
 AATCGGCTCCATGAGCGGCTGGGATGT

**ACGCGT**ACGCGGCCGCTCGAGCAGAACTCATCTCAGAAGAGGATCTGGCAGCAAATGATATCCTGGATT  
 ACAAGGATGACGACGATAAGGTTTAA

Protein Sequence: >RC211250 protein sequence  
 Red=Cloning site Green=Tags(s)

MHLSQLLACALLLTLRLPSEAKPGAPPKVPRTPPAEELAEPQAAGGGQKKGDKAPGGGGANLKGDRSR  
 LLRDLRVDTKSRAAWARLLQEHPNARKYKANKKGLSKGCFGLKLDRIQSMSGLGC

**TR**TRPLEQKLISEEDLAANDILDYKDDDDKV

Chromatograms: [https://cdn.origene.com/chromatograms/mk6009\\_e11.zip](https://cdn.origene.com/chromatograms/mk6009_e11.zip)

Restriction Sites: SgfI-MluI



[View online »](#)

Cloning Scheme:



ACCN: NM\_024409

ORF Size: 378 bp

OTI Disclaimer: The molecular sequence of this clone aligns with the gene accession number as a point of reference only. However, individual transcript sequences of the same gene can differ through naturally occurring variations (e.g. polymorphisms), each with its own valid existence. This clone is substantially in agreement with the reference, but a complete review of all prevailing variants is recommended prior to use. [More info](#)

OTI Annotation: This clone was engineered to express the complete ORF with an expression tag. Expression varies depending on the nature of the gene.

Components: The ORF clone is ion-exchange column purified and shipped in a 2D barcoded Matrix tube containing 10ug of transfection-ready, dried plasmid DNA (reconstitute with 100 ul of water).

- Reconstitution Method:
1. Centrifuge at 5,000xg for 5min.
  2. Carefully open the tube and add 100ul of sterile water to dissolve the DNA.
  3. Close the tube and incubate for 10 minutes at room temperature.
  4. Briefly vortex the tube and then do a quick spin (less than 5000xg) to concentrate the liquid at the bottom.
  5. Store the suspended plasmid at -20°C. The DNA is stable for at least one year from date of shipping when stored at -20°C.

RefSeq: [NM\\_024409.4](#)

RefSeq Size: 701 bp

RefSeq ORF: 381 bp

Locus ID: 4880

UniProt ID: [P23582](#)

**Cytogenetics:** 2q37.1

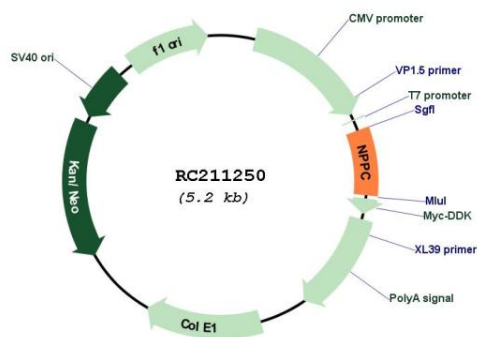
**Domains:** ANP

**Protein Families:** Secreted Protein

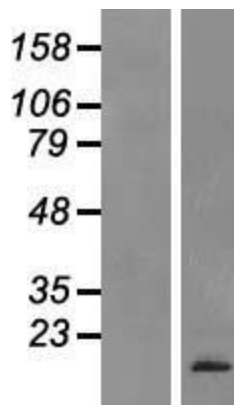
**MW:** 13.2 kDa

**Gene Summary:** This gene encodes a preproprotein that is proteolytically processed to generate multiple protein products. These products include the cardiac natriuretic peptides CNP-53, CNP-29 and CNP-22, which belong to the natriuretic family of peptides. The encoded peptides exhibit vasorelaxation activity in laboratory animals and elevated levels of CNP-22 have been observed in the plasma of chronic heart failure patients. [provided by RefSeq, Oct 2015]

**Product images:**



Circular map for RC211250



Western blot validation of overexpression lysate (Cat# [LY411276]) using anti-DDK antibody (Cat# [TA50011-100]). Left: Cell lysates from untransfected HEK293T cells; Right: Cell lysates from HEK293T cells transfected with RC211250 using transfection reagent MegaTran 2.0 (Cat# [TT210002]).