

Product datasheet for RC211243

TRH Receptor (TRHR) (NM_003301) Human Tagged ORF Clone

Product data:

Product Type:	Expression Plasmids
Product Name:	TRH Receptor (TRHR) (NM_003301) Human Tagged ORF Clone
Tag:	Myc-DDK
Symbol:	TRH Receptor
Synonyms:	CHNG7; TRH-R
Mammalian Cell Selection:	Neomycin
Vector:	pCMV6-Entry (PS100001)
E. coli Selection:	Kanamycin (25 ug/mL)
ORF Nucleotide Sequence:	>RC211243 ORF sequence Red=Cloning site Blue=ORF Green=Tags(s)

TTTTGTAATACGACTCACTATAGGGCGCCGGGAATTCGTCGACTGGATCCGGTACCGAGGAGATCTGCC
GCC**CGATCGCC**

ATGGAAAACGAGACAGTCAGTGAACGAACCAACACAGCTTCAGCCACGAGCAGTGGTGGCCTTAGAAT
ACCAGGTGGTCACCATTACTTGTACTCATTATTTGTGGCTGGGCATTGTAGGCAACATCATGGTAGT
CCTGGTTGTCATGAGAACCAAGCACATGAGGACCCCAAACTGCTACCTGGTGGCCTGGCAGTAGCT
GATCTCATGGTCTTGGTGGCCGAGGCCTCCCCAACATAACAGACAGTATCTACGGTTCCTGGGTCTATG
GCTATGTTGGATGCCTCTGCATTACTTACCTCCAGTATTTGGGAATTAATGCATCCTCTTGTCAATAAC
AGCCTTTACCATTGAGAGGTACATAGCAATCTGTCAACCCATCAAAGCCAGTTTCTCTGCACATTTTCC
AGAGCCAAAAAGATTATCATCTTTGTCTGGGCTTTCACATCTTTACTGTATGCTCTGGTCTTCTTGGC
TGGATCTCAATATTAGCACCTACAAAGATGCTATTGTGATATCCTGTGGCTACAAGATCTCCAGGAATTA
CTACTCACCTATTTACCTAATGGACTTTGGTGTCTTTTATGTTGTGCCAATGATCCTGGCTACCGTCCCTC
TATGGATTCATAGCTAGAATCCTTTTCTAAATCCCATTCCTTCAGATCCTAAAGAAAATCTAAGACAT
GGAAAAATGATTAACCCATCAGAACACAAATCTGAATGTAATACCTCTAATAGATGTTTCAACAGCAC
AGTATCTTCAAGGAAGCAGGTCACCAAGATGCTGGCAGTGGTTGTAATCTGTTTGGCCCTTTTATGGATG
CCCTACAGGACTCTAGTGGTTGCAACTCATTCTCCAGTCTTTCCAAGAAAATGGTTTTTGGCTCT
TTTGCAGAAATTTGCATTTATCTCAACAGTGCCATCAACCCGGTGATTTACAATCTCATGTCCAGAAATT
CCGTGCAGCCTTCAGAAAAGCTCTGCAACTGCAAGCAGAAGCCAACAGAGAAAACCTGCTAACTACAGTGTG
GCCCTAAATTACAGCGTCATCAAGGAGTCAGACATTTTCAGCACAGAGCTTGATGATACACTGTCACTG
ACACTTACCTGTCTGCCACAAAAGTGTCTTTTGTGACACCTGCTGGCTTCTGAGGTATCCTTTAGCCA
AAGT

ACGCGTACGCGGCCGCTCGAGCAGAAACTCATCTCAGAAGAGGATCTGGCAGCAATGATATCCTGGATT
ACAAGGATGACGACGATAAGGTTTAA



[View online >](#)

Reconstitution Method:

1. Centrifuge at 5,000xg for 5min.
2. Carefully open the tube and add 100ul of sterile water to dissolve the DNA.
3. Close the tube and incubate for 10 minutes at room temperature.
4. Briefly vortex the tube and then do a quick spin (less than 5000xg) to concentrate the liquid at the bottom.
5. Store the suspended plasmid at -20°C. The DNA is stable for at least one year from date of shipping when stored at -20°C.

RefSeq: [NM_003301.7](#)

RefSeq Size: 1415 bp

RefSeq ORF: 1197 bp

Locus ID: 7201

UniProt ID: [P34981](#)

Cytogenetics: 8q23.1

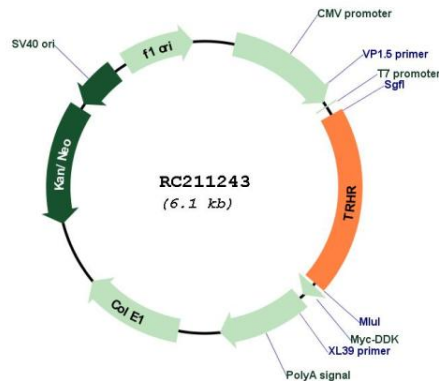
Protein Families: Druggable Genome, GPCR, Transmembrane

Protein Pathways: Calcium signaling pathway, Neuroactive ligand-receptor interaction

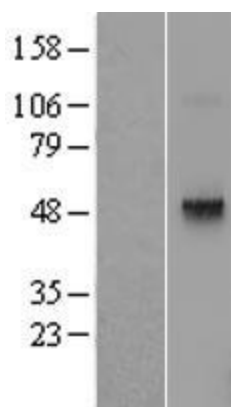
MW: 45.1 kDa

Gene Summary: This gene encodes a G protein-coupled receptor for thyrotropin-releasing hormone (TRH). Upon binding to TRH, this receptor activates the inositol phospholipid-calcium-protein kinase C transduction pathway. Mutations in this gene have been associated with generalized thyrotropin-releasing hormone resistance. [provided by RefSeq, Sep 2011]

Product images:



Circular map for RC211243



Western blot validation of overexpression lysate (Cat# [LY401138]) using anti-DDK antibody (Cat# [TA50011-100]). Left: Cell lysates from untransfected HEK293T cells; Right: Cell lysates from HEK293T cells transfected with RC211243 using transfection reagent MegaTran 2.0 (Cat# [TT210002]).