

Product datasheet for RC211236

REXO2 (NM_015523) Human Tagged ORF Clone

Product data:

Product Type:	Expression Plasmids
Product Name:	REXO2 (NM_015523) Human Tagged ORF Clone
Tag:	Myc-DDK
Symbol:	REXO2
Synonyms:	CGI-114; REX2; RFN; SFN
Mammalian Cell Selection:	Neomycin
Vector:	pCMV6-Entry (PS100001)
E. coli Selection:	Kanamycin (25 ug/mL)
ORF Nucleotide Sequence:	>RC211236 ORF sequence Red=Cloning site Blue=ORF Green=Tags(s)

TTTTGTAATACGACTCACTATAGGGCGGCCGGAATTCGTCGACTGGATCCGGTACCGAGGAGATCTGCC
GCC**CGATCGCC**

ATGCTAGGCGGCTCCCTGGGCTCCAGGCTGTTGCGGGGTGTAGGTGGGAGTCACGGACGGTTCGGGGCCC
GAGGTGTCGCGAAGGTGGCGCAGCCATGGCGGCAGGGGAGAGCATGGCTCAGCGGATGGTCTGGGTGGA
CCTGGAGATGACAGGATTGGACATTGAGAAGGACCAGATTATTGAGATGGCCTGTCTGATAACTGACTCT
GATCTCAACATTTGGCTGAAGTCTAACCTGATTATAAAACAACCAGATGAGTTGCTGGACAGCATGT
CAGATTGGTGTAAAGGAGCATCACGGGAAGTCTGGCCTTACCAAGGCAGTGAAGGAGAGTACAATTACATT
GCAGCAGGAGATGAATTTCTGTCCTTTGTACGACAGCAGACTCCTCCAGGGCTCTGTCCACTTGCA
GGAAATTCAGTTCATGAAGATAAGAAGTTTCTTGACAAATACATGCCCCAGTTTCATGAAACATCTTCATT
ATAGAATAATTGATGTGAGCACTGTTAAAGAACTGTGCAGACGCTGGTATCCAGAAGAATATGAATTTGC
ACCAAAGAAGGCTGCTTCTCATAGGGCACTTGATGACATTAGTGAAAGCATCAAAGAGCTTCAGTTTTAC
CGAAATAACATCTTCAAGAAAAAATAGATGAAAAAGAAGGAAAATTATAGAAAATGGGGAAAATGAGA
AGACCGTGAGT

ACGCGTACGCGGCCGCTCGAGCAGAACTCATCTCAGAAGAGGATCTGGCAGCAAATGATATCCTGGATT
ACAAGGATGACGACGATAAGGTTTAA



[View online »](#)

Protein Sequence: >RC211236 protein sequence
 Red=Cloning site Green=Tags(s)

MLGGSLSRLLRGVGGSHGRFGARGVREGGAAMAAGESMAQRMVVDLEMTGLDIEKDQIIEMACLITDS
 DLNILAEGPNLI IKQPDELLDSMSDWCKEHHGKSGLTKAVKESTITLQQAEYFLSFVRQQTPPGLCPLA
 GNSVHEDKKFLDKYMPQFMKHLHYRIIDVSTVKELCRRWYPEEYEFAPKKAASHRALDDISESIKELQFY
 RNNIFKKKIDEKKRKIIENGENEKTVS

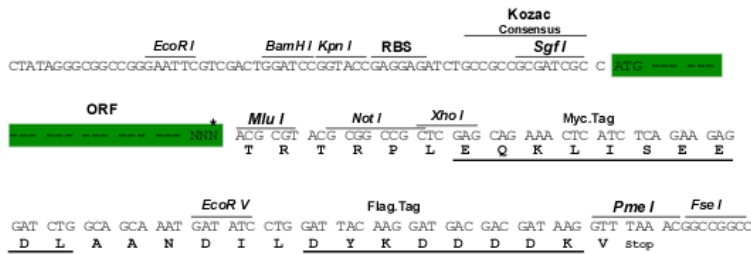
TRTRPLEQKLISEEDLAANDILDYKDDDDKV

Chromatograms: https://cdn.origene.com/chromatograms/mk6373_f04.zip

Restriction Sites: SgfI-MluI

Cloning Scheme:

Cloning sites used for ORF Shuttling:



* The last codon before the Stop codon of the ORF

ACCN: NM_015523

ORF Size: 711 bp

OTI Disclaimer: The molecular sequence of this clone aligns with the gene accession number as a point of reference only. However, individual transcript sequences of the same gene can differ through naturally occurring variations (e.g. polymorphisms), each with its own valid existence. This clone is substantially in agreement with the reference, but a complete review of all prevailing variants is recommended prior to use. [More info](#)

OTI Annotation: This clone was engineered to express the complete ORF with an expression tag. Expression varies depending on the nature of the gene.

Components: The ORF clone is ion-exchange column purified and shipped in a 2D barcoded Matrix tube containing 10ug of transfection-ready, dried plasmid DNA (reconstitute with 100 ul of water).

Reconstitution Method:

1. Centrifuge at 5,000xg for 5min.
2. Carefully open the tube and add 100ul of sterile water to dissolve the DNA.
3. Close the tube and incubate for 10 minutes at room temperature.
4. Briefly vortex the tube and then do a quick spin (less than 5000xg) to concentrate the liquid at the bottom.
5. Store the suspended plasmid at -20°C. The DNA is stable for at least one year from date of shipping when stored at -20°C.

Note: Plasmids are not sterile. For experiments where strict sterility is required, filtration with 0.22um filter is required.

RefSeq: [NM_015523.4](#)

RefSeq Size: 1171 bp

RefSeq ORF: 714 bp

Locus ID: 25996

UniProt ID: [Q9Y3B8](#)

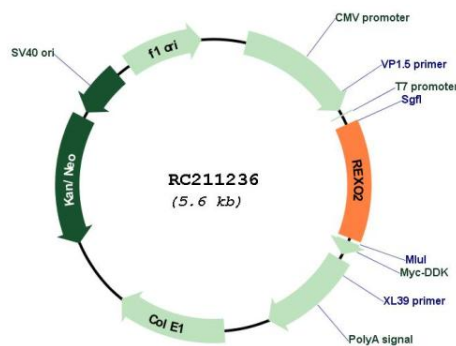
Cytogenetics: 11q23.2

Domains: EXOIII

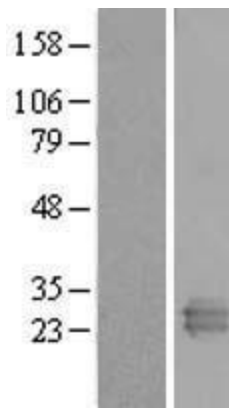
MW: 26.8 kDa

Gene Summary: This gene encodes a 3'-to-5' exonuclease specific for small (primarily 5 nucleotides or less in length) single-stranded RNA and DNA oligomers. This protein may have a role in DNA repair, replication, and recombination, and in RNA processing and degradation. It may also be involved in resistance of human cells to UV-C-induced cell death through its role in the DNA repair process. [provided by RefSeq, Nov 2011]

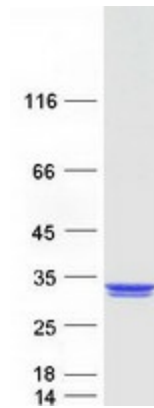
Product images:



Circular map for RC211236



Western blot validation of overexpression lysate (Cat# [LY414494]) using anti-DDK antibody (Cat# [TA50011-100]). Left: Cell lysates from untransfected HEK293T cells; Right: Cell lysates from HEK293T cells transfected with RC211236 using transfection reagent MegaTran 2.0 (Cat# [TT210002]).



Coomassie blue staining of purified REXO2 protein (Cat# [TP311236]). The protein was produced from HEK293T cells transfected with REXO2 cDNA clone (Cat# RC211236) using MegaTran 2.0 (Cat# [TT210002]).