

Product datasheet for **RC211235**

PIP3E (IPCEF1) (NM_015553) Human Tagged ORF Clone

Product data:

Product Type:	Expression Plasmids
Product Name:	PIP3E (IPCEF1) (NM_015553) Human Tagged ORF Clone
Tag:	Myc-DDK
Symbol:	PIP3E
Synonyms:	PIP3-E
Mammalian Cell Selection:	Neomycin
Vector:	pCMV6-Entry (PS100001)
E. coli Selection:	Kanamycin (25 ug/mL)



[View online »](#)

ORF Nucleotide Sequence:

>RC211235 ORF sequence
 Red=Cloning site Blue=ORF Green=Tags(s)

TTTTGTAATACGACTCACTATAGGGCGGCCGGAATTCGTCGACTGGATCCGGTACCGAGGAGATCTGCC
 GCC**GCGATCGCC**

ATGACATCATACATGGCTATTGATGGCAGTGCTCTTGTCCCTTGCCTCAGAAGCCAGGAGGAAAACTC
 AAGGTTTTCTCACGATGAGTCGGAGGAGGATATCGTGTAAGATCTGGCCATGCTGACTGCCAAGGGTG
 GCTGTATAAGAAAAAGGAAAAGGGAAGTTTCTAAGCAACAAATGGAAAAAGTTCTGGGTGATACTGAAG
 GGGTCGCTCACTGTACTGGTATAGCAATCAAATGGCAGAGAAAGCTGATGGATTTGTCAACCTGCCTGATT
 TCACTGTGGAAAGAGCATCTGAATGCAAGAAAAAGCATGCTTTTAAAGATCAGCCATCCACAGATCAAGAC
 CTTTTATTTTGCAGCTGAGAATGTGCAGGAAATGAACGTGTGGTTAAATAAACTTGGATCGGCTGTAATC
 CATCAGGAATCCACTACAAAGGATGAAGAATGTTACAGTGAAGTGAACAGGAAGATCCAGAAATAGCTG
 CGGAGACACCACCCCTCTCACGCTTCCAGACTCAGTCTTTGACTGCACAGCAGGCATCTTCATCCTC
 ACCCAGCTGAGTGAACGTCGTATTCTTCTCTTCCCTGGAAAAACAGTGAAGACACCAGCAGTTTTT
 CCTTCTCTTATCTAAAGAGAGACAATCCTTGCCTGACACAGTTAACAGTTTGTCTGCTGCTGAAGATG
 AGGGACAACCAATAACGTTTGTGTGCAAGTTCATTACCTGTACCCCTCAGAGGCAGGCATCCACAAGGC
 CCTGGAAAACAGTTTTGTACATCAGAAAGTGGATTTTTGAACCTTTTATCTAGTGATGATACTTCTTCA
 TTGAGTAGCAATCATGACCATCTTACTGTCCCAGATAAGCCTGCTGGATCAAAGATCATGGACAAAGAAG
 AGACAAAAGTGTCTGAAGATGATGAAATGGAGAAGCTGTACAAATCATTAGAGCAAGCTAGTCTATCTCC
 TCTTGGGACCGACGACCTTCTGACTAAAAAGGAGTTGAGAAAACTCTTTGTTAAGCGGTGTAATAATCCA
 TCTATAAACGAGAACTCCACAAAATCCGAACATTGAATAGCACATTAAGTGTAAAGAACATGATCTGG
 CCATGATTAACCAAGTTGCTGGATGACCCGAAGCTGACAGCCAGGAAATACAGAGAGTGAAAGTCATGAA
 CACCCTGCTGATCCAGGACATCTATCAGCAGCAGCGGGCTTCGCCTGCCCTGATGACACTGATGACACC
 CCCCAGGAACTCAAGAAATCACCTTCTTCTCCCTCTGTTGAAAATTCCATT

ACGCGTACGCGGCCGCTCGAGCAGAAACTCATCTCAGAAGAGGATCTGGCAGCAAATGATATCCTGGATT
 ACAAGGATGACGACGATAAGGTTTAA

Protein Sequence:

>RC211235 protein sequence
 Red=Cloning site Green=Tags(s)

MTSYMAIDGSALVPLRQKPRRKTQGFLTMSRRRISCKDLGHADCQGWLYKKKEKGSFLSNKWKFFWVILK
 GSSLYWYSNQMAEKADGFVNLPDFTVERASECKKHAFKISHPQIKTFYFAENVQEMNVWLNKLGSAVI
 HQESTTKDEECYSESEQEDPEIAAETPPPPHASQTQSLTAQQASSSPSLSGTSYFSLENTVKTPTSS
 PSSL SKERQSLPDTVNSLSAAEDEGQPI TFAVQVHSPVPSEAGIHKALENSFVTSESGFLNSLSSDDTSS
 LSSNHDHLTVPDKPAGSKIMDKKETKVEDDEMEKLYKSLEQASLSPLGDRRPSTKKELRKSFKRCKNP
 SINEKLHKIRTLNSTLKCKEHLAMINQLLDDPKLTARKYREWKMNTLLIQDIYQQQRASPAPDDTDDT
 PQELKKSPPSSPSVNSI

TRTRPLEQKLISEEDLAANDILDYKDDDDKV

Chromatograms:

https://cdn.origene.com/chromatograms/mk6373_b09.zip

Restriction Sites:

SgfI-MluI

Cloning Scheme:


ACCN: NM_015553

ORF Size: 1311 bp

OTI Disclaimer: The molecular sequence of this clone aligns with the gene accession number as a point of reference only. However, individual transcript sequences of the same gene can differ through naturally occurring variations (e.g. polymorphisms), each with its own valid existence. This clone is substantially in agreement with the reference, but a complete review of all prevailing variants is recommended prior to use. [More info](#)

OTI Annotation: This clone was engineered to express the complete ORF with an expression tag. Expression varies depending on the nature of the gene.

Components: The ORF clone is ion-exchange column purified and shipped in a 2D barcoded Matrix tube containing 10ug of transfection-ready, dried plasmid DNA (reconstitute with 100 ul of water).

- Reconstitution Method:**
1. Centrifuge at 5,000xg for 5min.
 2. Carefully open the tube and add 100ul of sterile water to dissolve the DNA.
 3. Close the tube and incubate for 10 minutes at room temperature.
 4. Briefly vortex the tube and then do a quick spin (less than 5000xg) to concentrate the liquid at the bottom.
 5. Store the suspended plasmid at -20°C. The DNA is stable for at least one year from date of shipping when stored at -20°C.

Note: Plasmids are not sterile. For experiments where strict sterility is required, filtration with 0.22um filter is required.

RefSeq: [NM_015553.2](#), [NP_056368.1](#)

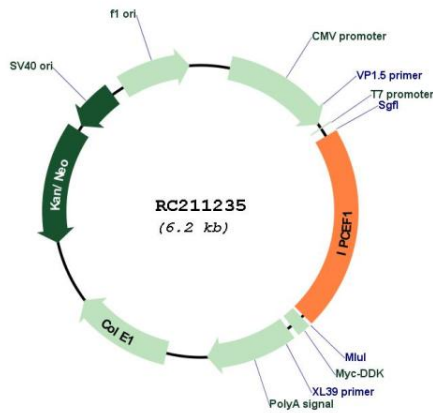
RefSeq Size: 6815 bp

RefSeq ORF: 1314 bp

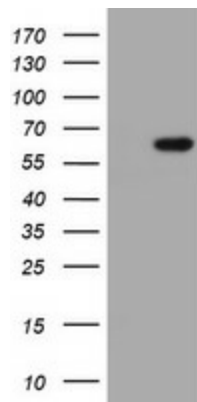
Locus ID: 26034

UniProt ID: [Q8WWN9](#)
 Cytogenetics: 6q25.2
 MW: 49 kDa
 Gene Summary: Enhances the promotion of guanine-nucleotide exchange by PSCD2 on ARF6 in a concentration-dependent manner.[UniProtKB/Swiss-Prot Function]

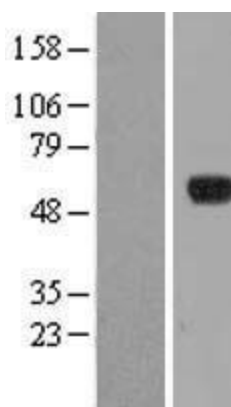
Product images:



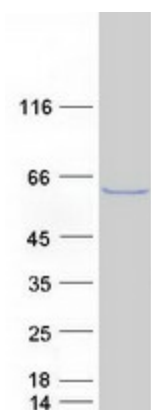
Circular map for RC211235



HEK293T cells were transfected with the pCMV6-ENTRY control (Cat# [PS100001], Left lane) or pCMV6-ENTRY IPCEF1 (Cat# RC211235, Right lane) cDNA for 48 hrs and lysed. Equivalent amounts of cell lysates (5 ug per lane) were separated by SDS-PAGE and immunoblotted with anti-IPCEF1(Cat# [TA505252]). Positive lysates [LY414468] (100ug) and [LC414468] (20ug) can be purchased separately from OriGene.



Western blot validation of overexpression lysate (Cat# [LY414468]) using anti-DDK antibody (Cat# [TA50011-100]). Left: Cell lysates from untransfected HEK293T cells; Right: Cell lysates from HEK293T cells transfected with RC211235 using transfection reagent MegaTran 2.0 (Cat# [TT210002]).



Coomassie blue staining of purified IPCEF1 protein (Cat# [TP311235]). The protein was produced from HEK293T cells transfected with IPCEF1 cDNA clone (Cat# RC211235) using MegaTran 2.0 (Cat# [TT210002]).