

Product datasheet for **RC211228**

LILRB3 (NM_006864) Human Tagged ORF Clone

Product data:

Product Type:	Expression Plasmids
Product Name:	LILRB3 (NM_006864) Human Tagged ORF Clone
Tag:	Myc-DDK
Symbol:	LILRB3
Synonyms:	CD85A; HL9; ILT-5; ILT5; LILRA6; LIR-3; LIR3; PIR-B; PIRB
Mammalian Cell Selection:	Neomycin
Vector:	pCMV6-Entry (PS100001)
E. coli Selection:	Kanamycin (25 ug/mL)



[View online »](#)

**ORF Nucleotide
Sequence:**

>RC211228 ORF sequence
 Red=Cloning site Blue=ORF Green=Tags(s)

TTTTGTAATACGACTCACTATAGGGCGGCCGGAATTCGTCGACTGGATCCGGTACCGAGGAGATCTGCC
 GCC**CGCATCGCC**

ATGACGCCCGCCCTCACAGCCCTGCTCTGCCTTGGGCTGAGTCTGGGCCCCAGGACCCCGTGCAGGCAG
 GGCCCTTCCCAAACCCACCCTCTGGGCTGAGCCAGGCTCTGTGATCAGCTGGGGAGCCCGTGACCAT
 CTGGTGTAGGGGAGCCTGGAGGCCAGGAGTACCGACTGGATAAAGAGGGAAGCCAGAGCCCTTGGAC
 AGAAATAACCCACTGGAACCCAAGAACAAGGCCAGATTCTCCATCCCATCCATGACAGAGCACCATGCGG
 GGAGATACCGCTGCCACTATTACAGCTCTGAGGCTGGTACAGAGCCAGCGACCCCTGGAGCTGGTGT
 GACAGGATTCTACAACAAACCCACCCTCTCAGCCCTGCCAGCCCTGTGGTGGCCTCAGGGGGAATATG
 ACCCTCCGATGTGGCTCACAGAAGGATATCACCATTTTGTCTGATGAAGGAAGGAGAACCAGCTCC
 CCCGACCCTGGACTCACAGCAGCTCCACAGTGGGGGTCCAGGCCCTGTTCCCTGTGGCCCCGTGAA
 CCCAGCCACAGGTGGAGTTTACATGCTATTACTATTATGAACACCCCCAGGTGTGGTCCCACCCC
 AGTGACCCCTGGAGATTCTGCCCTCAGGCGTGTCTAGGAAGCCCTCCCTCCTGACCCTGCAGGGCCCTG
 TCCTGGCCCTGGGCAGAGCCTGACCCTCCAGTGTGGCTCTGATGTGGGTACGACAGATTTGTTCTGTA
 TAAGGAGGGGAAACGTGACTTCCCTCCAGCGCCCTGGCCAGCAGCCCAGGCTGGGCTCTCCAGGCCAAC
 TTCACCTGGGCCCTGTGAGCCGCTCCCACGGGGCCAGTACAGGTGCTATGGTGACACAACTCTCCT
 CCGAGTGGTGGCCCCCAGCGACCCCTGAACATCCTGATGGCAGGACAGATCTATGACACCGTCTCCCT
 GTCAGCACAGCCGGCCCCACAGTGGCCTCAGGAGAGAACGTGACCCTGCTGTGTGATCATGGTGGCAG
 TTTGACACTTTCCTTCTGACCAAAGAAGGGCAGCCATCCCCACTGCGTCTGAGATCAATGTACGGAG
 CTATAAGTACCAGGCTGAATTCCTCATGAGTCTGTGACCTCAGCCACGCGGGGACCTACAGGTGTA
 CGGCTCATACAGCTCAAACCCACCTGCTGTCTTTCCCAAGTACGCCCCGGAACCTCATGGTCTCAGGA
 CACTCTGGAGGCTCCAGCCTCCCACCCACAGGGCCGCTCCACACCTGGTCTGGGAAGATACCTGGAGG
 TTTTGATTGGGGTCTCGGTGGCCTTCGTCTGCTCTTCTCCTCCTCTTCTCCTCCTCCGACGTCA
 GCGTCACAGCAAACACAGGACATCTGACCAGAGAAAGACTGATTTCCAGCGTCTGCAGGGGCTGCGGAG
 ACAGAGCCCAAGGACAGGGGCTGCTGAGGAGGTCCAGCCAGCTGCTGACGTCCAGGAAGAAAACCTCT
 ATGCTGCCGTGAAGGACACAGTCTGAGGACAGGGTGGAGCTGGACAGTACAGAGCCACACGATGAAGA
 CCCCAGGCAGTACGTATGCCCGGTGAAACTCCAGTCTAGGAGAGAAATGGCCTCTCCTCCTCC
 TCACTGTCTGGGAATTCCTGGACAAAAGGACAGACAGGTGGAAGAGGACAGGCAGATGGACACTGAGG
 CTGCTGCATCTGAAGCCTCCCAGGATGTGACCTACGCCACAGTGCACAGCTTGACCCTTAGACGGAAGGC
 AACTGAGCCTCCTCCATCCCAGGAAGGGAACTCCAGCTGAGCCAGCATCTACGCCACTCTGGCCATC
 CAC

ACGCGTACGCGGCCGCTCGAGCAGAACTCATCTCAGAAGAGGATCTGGCAGCAATGATATCCTGGATT
 ACAAGGATGACGACGATAAGGTTTAA

Protein Sequence: >RC211228 protein sequence
 Red=Cloning site Green=Tags(s)

MTPAL TALLCLGLSLGPRTRVQAGFPFKPTLWAEPGSVISWGSPVTIWCQGSLEAQEYRLDKEGSPEPLD
 RNNPLEPKNKARFSIPSMTEHHAGRYRCHYYSSAGWSEPSDPLELVMTGFYNKPTLSALPSPVVASGGNM
 TLRCGSQKGYHHFVLMKEGEHQLPRTLDSQQLHSGGFQALFPVGPVNPNSHRWRFTCYYYYMNTQPQVWSHP
 SDPLEILPSGVSRRKPSLLTLQGPVLAPGQSLTLQCGSDVGYDRFVLYKEGERDFLQRPQGQPQAGLSQAN
 FTLGPVSRSHGGQYRCYGAHNLSSEWSAPSDPLNILMAGQIYDVTSLSAQPGPTVASGENVTLLCQSWWQ
 FDTFLLTKEGAAHPPLRLRSMYGAKHYQAEFPMSPVTSAHAGTYRCYGSYSSNPHELLSFPSEPELPMVSG
 HSGGSSLPPTGPPSTPGLGRYLEVLIGVSAFVLLLLFLLLFLRRQRHRSKHRSDQRKTDQRPAGAAE
 TEPKDRGLLRSSPAADVQEENLYAAVKDTQSEDRVELDSQSPHDEDPQAVTYAPVKHSSPRREMASPPS
 SLSGEFLDTKDRQVEEDRQMDTEAAASEASQDVTYAQLHSLTLRRTATEPPPSQEGEPPAEPSPYATLAI
 H

TRTRPLEQKLI SEEDLAANDILDYKDDDDKV

Chromatograms: https://cdn.origene.com/chromatograms/mk6590_e07.zip

Restriction Sites: SgfI-MluI

Cloning Scheme:



ACCN: NM_006864

ORF Size: 1893 bp

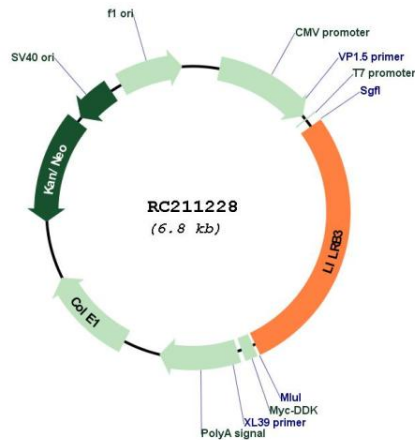
OTI Disclaimer: The molecular sequence of this clone aligns with the gene accession number as a point of reference only. However, individual transcript sequences of the same gene can differ through naturally occurring variations (e.g. polymorphisms), each with its own valid existence. This clone is substantially in agreement with the reference, but a complete review of all prevailing variants is recommended prior to use. [More info](#)

OTI Annotation: This clone was engineered to express the complete ORF with an expression tag. Expression varies depending on the nature of the gene.

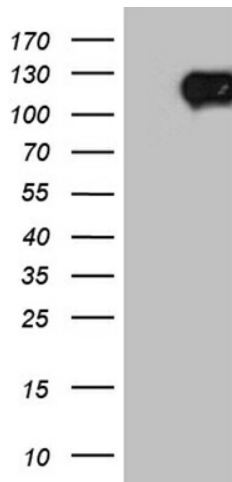
Components: The ORF clone is ion-exchange column purified and shipped in a 2D barcoded Matrix tube containing 10ug of transfection-ready, dried plasmid DNA (reconstitute with 100 ul of water).

Reconstitution Method:	<ol style="list-style-type: none">1. Centrifuge at 5,000xg for 5min.2. Carefully open the tube and add 100ul of sterile water to dissolve the DNA.3. Close the tube and incubate for 10 minutes at room temperature.4. Briefly vortex the tube and then do a quick spin (less than 5000xg) to concentrate the liquid at the bottom.5. Store the suspended plasmid at -20°C. The DNA is stable for at least one year from date of shipping when stored at -20°C.
Note:	Plasmids are not sterile. For experiments where strict sterility is required, filtration with 0.22um filter is required.
RefSeq:	<u>NM_006864.1, NP_006855.1</u>
RefSeq Size:	2840 bp
RefSeq ORF:	1896 bp
Locus ID:	11025
Cytogenetics:	19q13.42
Domains:	ig, IGc2, IG
Protein Families:	Druggable Genome, Transmembrane
Protein Pathways:	B cell receptor signaling pathway
MW:	69.4 kDa
Gene Summary:	<p>This gene is a member of the leukocyte immunoglobulin-like receptor (LIR) family, which is found in a gene cluster at chromosomal region 19q13.4. The encoded protein belongs to the subfamily B class of LIR receptors which contain two or four extracellular immunoglobulin domains, a transmembrane domain, and two to four cytoplasmic immunoreceptor tyrosine-based inhibitory motifs (ITIMs). The receptor is expressed on immune cells where it binds to MHC class I molecules on antigen-presenting cells and transduces a negative signal that inhibits stimulation of an immune response. It is thought to control inflammatory responses and cytotoxicity to help focus the immune response and limit autoreactivity. Multiple transcript variants encoding different isoforms have been found for this gene. [provided by RefSeq, Jul 2008]</p>

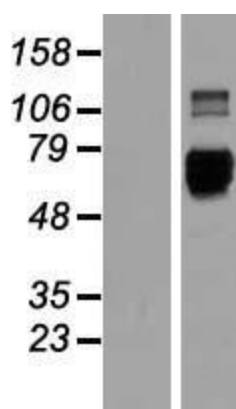
Product images:



Circular map for RC211228



HEK293T cells were transfected with the pCMV6-ENTRY control (Cat# [PS100001], Left lane) or pCMV6-ENTRY LILRB3 (Cat# RC211228, Right lane) cDNA for 48 hrs and lysed. Equivalent amounts of cell lysates (5 ug per lane) were separated by SDS-PAGE and immunoblotted with anti-LILRB3 antibody (Cat# [TA812163]). Positive lysates [LY416371] (100ug) and [LC416371] (20ug) can be purchased separately from OriGene.



Western blot validation of overexpression lysate (Cat# [LY416371]) using anti-DDK antibody (Cat# [TA50011-100]). Left: Cell lysates from untransfected HEK293T cells; Right: Cell lysates from HEK293T cells transfected with RC211228 using transfection reagent MegaTran 2.0 (Cat# [TT210002]).