

Product datasheet for RC211227

RAB36 (NM_004914) Human Tagged ORF Clone

Product data:

Product Type:	Expression Plasmids
Product Name:	RAB36 (NM_004914) Human Tagged ORF Clone
Tag:	Myc-DDK
Symbol:	RAB36
Mammalian Cell Selection:	Neomycin
Vector:	pCMV6-Entry (PS100001)
E. coli Selection:	Kanamycin (25 ug/mL)
ORF Nucleotide Sequence:	>RC211227 ORF sequence Red=Cloning site Blue=ORF Green=Tags(s)

TTTTGTAATACGACTCACTATAGGGCGCCGGGAATTCGTCGACTGGATCCGGTACCGAGGAGATCTGCC
GCC**CGATCGCC**

ATGGTGATCGCCGGTGCAAGCTGGATGCTTGGACGCGCCGCTGCCAGTCCAACGCAGACCCCGCCACGA
CGTCGACGATTCGTGTAGCCCGCAGGTCCCAGCTGGCTCTCGTTGCCATGGTGATCGCCCGCCGCTGGCTC
AGGCGGACCAGGCCGCGCGGAGCCCCAGCTTTCACAGCCATCGCTGGACTGTGGAAGAATGAGGTCCTCC
CTGACACCTTTGGGGCCCCCTGTGAGCCGCGACCGTGTATCGCCAGCTTCCCTAAGTGGTACACGCCGG
AAGCCTGTTTGCAGCTCAGGGAGCACTCCACGGGCAGGTCAGCGCTGCCTGCCAACGCAGGAACACCGGG
GACTGTCGGGCTCAAACCTCCAAGGTGGTGGTGGTTGGCGATCTCTACGTGGGAAGACCAGCCTCATC
CACAGTTTTGCAAGAATGTTTTGATCGAGACTACAAGGCCACCATTGGGGTGGACTTTGAAATTGAGC
GCTTTGAGATTGCTGGGATTCCTATAGCCTCCAGATCTGGGACACAGCTGGGCAGGAGAAGTTCAAGTG
CATCGCATCTGCCTACTACCGGGGTGCCAGGTGATCATCACGGCCTTTGACCTCACTGACGTGCAGACC
CTGGAGCATACCAGGCAGTGGTTGGAGGATGCTCTGAGGGAGAACGAGGCAGGCTCCTGCTTCATCTTCC
TCGTGGGAACCAAGAAGGACCTTCTGTGAGGGCCGCATGTGAGCAGGCCGAAGCAGACGCTGTGCACCT
GGCCAGGGAGATGCAGGCCGAGTACTGGTCAGTGTGCGCAAGACTGGCGAGAACGTGAAGGCATTCTTC
AGCCGCGTAGCCGCCCTGGCATTGAGCAGTCCGTGCTGCAGGACCTGGAGAGGCAGAGCAGTGCCCGGC
TCCAGGTCGGCAATGGAGACCTAATCCAATGGAAGGGAGTCCGCCCGAGACCCAGGAGAGCAAGAGGCC
CTCCAGCCTGGGCTGCTGC

ACGCGTACGCGGCCGCTCGAGCAGAACTCATCTCAGAAGAGGATCTGGCAGCAAATGATATCCTGGATT
ACAAGGATGACGACGATAAGGTTTAA



[View online »](#)

Protein Sequence: >RC211227 protein sequence
Red=Cloning site Green=Tags(s)

MVIAGASWMLGRAAASPTQTPPTTSTIRVARRSRVALVAMVIAAAGSGGPGRAEPQLSQPSLDCGRMRSS
 LTPLGPPVSRDRVIASFPKWYTPACLQLREHFHGQVSAACQRRNTGTVGLKLSKVVVVGDLYVGKTSLI
 HRFCKNVFDRDYKATIGVDFEIERFEIAGIPYSLQIWDTAGQEKFCIASAYYRGAQVIIITAFDLTDVQT
 LEHTRQWLEDALRENEAGSCFIFLVGTTKDLLSGAACEQAEADAVHLAREMQAEYWSVSAKTGENVKAFF
 SRVAALAFEQSVLQDLERQSSARLQVNGDLIQMEGSPPETQESKRPSLSSLGCC

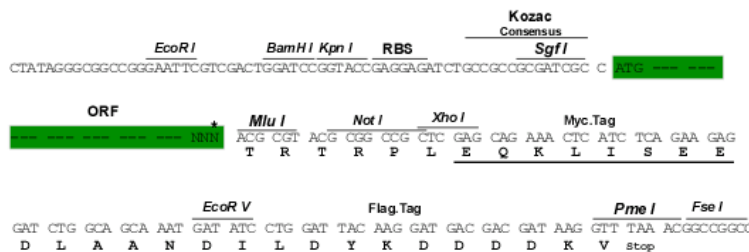
TRTRPLEQKLISEEDLAANDILDYKDDDDKV

Chromatograms: https://cdn.origene.com/chromatograms/mk6369_a10.zip

Restriction Sites: Sgfl-MluI

Cloning Scheme:

Cloning sites used for ORF Shuttling:



* The last codon before the Stop codon of the ORF

ACCN: NM_004914

ORF Size: 999 bp

OTI Disclaimer: The molecular sequence of this clone aligns with the gene accession number as a point of reference only. However, individual transcript sequences of the same gene can differ through naturally occurring variations (e.g. polymorphisms), each with its own valid existence. This clone is substantially in agreement with the reference, but a complete review of all prevailing variants is recommended prior to use. [More info](#)

OTI Annotation: This clone was engineered to express the complete ORF with an expression tag. Expression varies depending on the nature of the gene.

Components: The ORF clone is ion-exchange column purified and shipped in a 2D barcoded Matrix tube containing 10ug of transfection-ready, dried plasmid DNA (reconstitute with 100 ul of water).

Reconstitution Method:

1. Centrifuge at 5,000xg for 5min.
2. Carefully open the tube and add 100ul of sterile water to dissolve the DNA.
3. Close the tube and incubate for 10 minutes at room temperature.
4. Briefly vortex the tube and then do a quick spin (less than 5000xg) to concentrate the liquid at the bottom.
5. Store the suspended plasmid at -20°C. The DNA is stable for at least one year from date of shipping when stored at -20°C.

Note: Plasmids are not sterile. For experiments where strict sterility is required, filtration with 0.22um filter is required.

RefSeq: [NM_004914.4](#)

RefSeq Size: 3822 bp

RefSeq ORF: 804 bp

Locus ID: 9609

UniProt ID: [O95755](#)

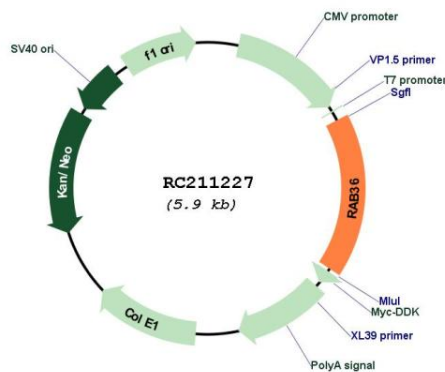
Cytogenetics: 22q11.23

Protein Families: Druggable Genome

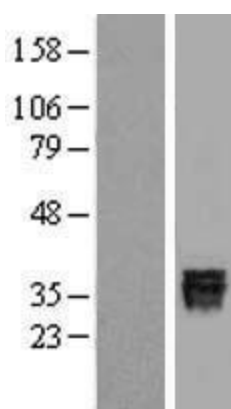
MW: 36.3 kDa

Gene Summary: Protein transport. Probably involved in vesicular traffic (By similarity).[UniProtKB/Swiss-Prot Function]

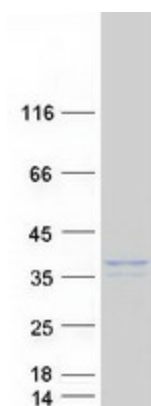
Product images:



Circular map for RC211227



Western blot validation of overexpression lysate (Cat# [LY417656]) using anti-DDK antibody (Cat# [TA50011-100]). Left: Cell lysates from untransfected HEK293T cells; Right: Cell lysates from HEK293T cells transfected with RC211227 using transfection reagent MegaTran 2.0 (Cat# [TT210002]).



Coomassie blue staining of purified RAB36 protein (Cat# [TP311227]). The protein was produced from HEK293T cells transfected with RAB36 cDNA clone (Cat# RC211227) using MegaTran 2.0 (Cat# [TT210002]).