

Product datasheet for RC211223

CDKL1 (NM_004196) Human Tagged ORF Clone

Product data:

Product Type:	Expression Plasmids
Product Name:	CDKL1 (NM_004196) Human Tagged ORF Clone
Tag:	Myc-DDK
Symbol:	CDKL1
Synonyms:	KKIALRE; P42
Mammalian Cell Selection:	Neomycin
Vector:	pCMV6-Entry (PS100001)
E. coli Selection:	Kanamycin (25 ug/mL)
ORF Nucleotide Sequence:	>RC211223 ORF sequence Red=Cloning site Blue=ORF Green=Tags(s)

TTTTGTAATACGACTCACTATAGGGCGGCCGGAATTCGTCGACTGGATCCGGTACCGAGGAGATCTGCC
GCC**CGATCGCC**

ATGATGGAGAAGTATGAAAAATTGGGAAAATTGGAGAAGGATCCTATGGAGTTGTTTTCAAATGTAGAA
ACAGGGACACGGGTGAGATTGTGGCCATCAAGAAGTTTCTGGAATCAGAAGATGACCCTGCATAAAGAA
AATTGCCCTTCGGGAAATCCGAATGCTCAAGCAACTCAAGCATCCCAACCTTGTTAACCTCCTGGAAGTC
TTCAGGAGGAAACGGAGGCTTACCTGGTGTGTAATATTGTGACCACACAGTTCTCCATGAGTTGGACA
GATACCAAAGAGGGGTACCAGAACATCTCGTGAAGAGCATAAATTGGCAGACACTGCAAGCTGTAAATTT
TTGCCATAAACACAATTGCATACATAGAGACGTGAAGCCAGAAAATATCCTCATCACGAAACATTCGGTG
ATTAAGCTTTGTGACTTTGGATTTGCTCGGCTTTTGACTGGACCGAGTGACTACTATACAGACTACGTGG
CTACCAGTGGTACCGCTCCCCTGAGCTGCTGGTGGGGACACGCAGTACGGCCCCCGGTGGATGTTTTG
GGCAATTTGGCTGTGTCTTTGCTGAGCTGCTGTCAGGAGTGCCCTGTGGCCAGGAAAATCGGATGTGGAT
CAGCTGTATCTGATTAGGAAGACCTTGGGGATCTCATTCTAGGCACCAGCAAGTGTGTTAGCACGAATC
AGTACTTCAGTGGAGTAAAAATCCAGACCCTGAAGATATGGAACCACTGAATTAATAATCCCAACAT
CTCTTATCCTGCCCTGGGGCTCCTAAAGGGCTGTCTCCACATGGACCCTACTCAAAGGCTGACATGTGAA
CAGCTGTTGCATACCCATATTTTGA AACATCAGAGAAAATAGAGGATTTGGCAAAGAACAACAACAA
CAACAAGGAAGACCTAAGAAAAGAGCCGAAAGCACCCTGCTTTACAGAAAACATCCAAGTTGCAGTACCT
ACCCAGCTAACTGGCAGCAGCATCCTTCCAGCTTTGGATAATAAGAAGTACTACTGTGATACCAAGAAA
CTTAACCTACCGTTTTCCAACATT

ACGCGTACGCGGCCGCTCGAGCAGAAAACATCTCAGAAGAGGATCTGGCAGCAAATGATATCCTGGATT
ACAAGGATGACGACGATAAGGTTAA



[View online »](#)

Reconstitution Method:

1. Centrifuge at 5,000xg for 5min.
2. Carefully open the tube and add 100ul of sterile water to dissolve the DNA.
3. Close the tube and incubate for 10 minutes at room temperature.
4. Briefly vortex the tube and then do a quick spin (less than 5000xg) to concentrate the liquid at the bottom.
5. Store the suspended plasmid at -20°C. The DNA is stable for at least one year from date of shipping when stored at -20°C.

RefSeq: [NM_004196.5](#)

RefSeq Size: 1619 bp

RefSeq ORF: 1074 bp

Locus ID: 8814

UniProt ID: [Q00532](#)

Cytogenetics: 14q21.3

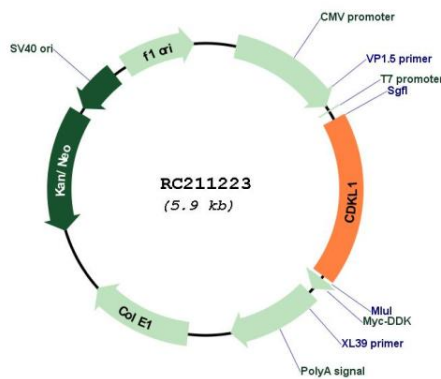
Domains: pkinase

Protein Families: Druggable Genome, Protein Kinase

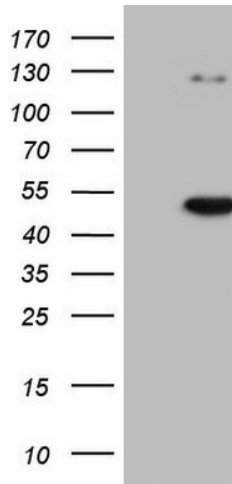
MW: 41.8 kDa

Gene Summary: This gene product is a member of a large family of CDC2-related serine/threonine protein kinases that accumulates primarily in the nucleus. [provided by RefSeq, Nov 2018]

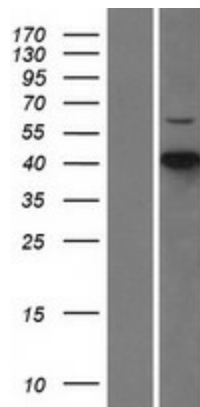
Product images:



Circular map for RC211223



HEK293T cells were transfected with the pCMV6-ENTRY control (Cat# [PS100001], Left lane) or pCMV6-ENTRY CDKL1 (Cat# RC211223, Right lane) cDNA for 48 hrs and lysed. Equivalent amounts of cell lysates (5 ug per lane) were separated by SDS-PAGE and immunoblotted with anti-CDKL1 (Cat# [TA805781]). Positive lysates [LY418154] (100ug) and [LC418154] (20ug) can be purchased separately from OriGene.



Western blot validation of overexpression lysate (Cat# [LY418154]) using anti-DDK antibody (Cat# [TA50011-100]). Left: Cell lysates from untransfected HEK293T cells; Right: Cell lysates from HEK293T cells transfected with RC211223 using transfection reagent MegaTran 2.0 (Cat# [TT210002]).