

## Product datasheet for RC211216

### GPR73B (PROKR2) (NM\_144773) Human Tagged ORF Clone

#### Product data:

Product Type:	Expression Plasmids
Product Name:	GPR73B (PROKR2) (NM_144773) Human Tagged ORF Clone
Tag:	Myc-DDK
Symbol:	GPR73B
Synonyms:	dj680N4.3; GPR73b; GPR73L1; GPRg2; HH3; KAL3; PKR2
Mammalian Cell Selection:	Neomycin
Vector:	pCMV6-Entry (PS100001)
E. coli Selection:	Kanamycin (25 ug/mL)
ORF Nucleotide Sequence:	>RC211216 representing NM_144773 Red=Cloning site Blue=ORF Green=Tags(s)

TTTTGTAATACGACTCACTATAGGGCGGCCGGAATTCGTCGACTGGATCCGGTACCGAGGAGATCTGCC  
GCC**CGATCGCC**

ATGGCAGCCCAGAATGGAACACCAGTTTCACACCCAACTTAATCCACCCCAAGACCATGCCTCCTCCC  
TCTCCTTAACTTCAGTTATGGTGATTATGACCTCCCTATGGATGAGGATGAGGACATGACCAAGACCCG  
GACCTTCTTCGCAGCCAAGATCGTCATTGGCATTGCACCTGGCAGGCATCATGCTGGTCTGCGGCATCGGT  
AACTTTGTCTTTATCGCTGCCCTCACCCGCTATAAGAAGTTGCGCAACCTCACCAATCTGCTCATTGCCA  
ACCTGGCCATCTCCGACTTCTGGTGGCCATCATCTGCTGCCCTTCGAGATGGACTACTACGTGGTACG  
GCAGCTCTCCTGGGAGCATGGCCACGTGCTCTGTGCCCTCCGTCACCTACCTGCGCACCGTCTCCCTTAC  
GTCTCCACCAATGCCTTGCTGGCCATTGCCATTGACAGATATCTCGCCATCGTTCACCCCTTGAAACCAC  
GGATGAATTATCAAACGGCCTCCTTCTGATCGCCTTGGTCTGGATGGTGTCCATTCTCATTGCCATCCC  
ATCGGCTTACTTTGCAACAGAAACGGTCTCTTTATTGTCAAGAGCCAGGAGAAGATCTTCTGTGGCCAG  
ATCTGGCCTGTGGATCAGCAGCTCTACTACAAGTCTACTTCTCTTTCATCTTTGGTGTGCGATTCGTGG  
GCCCTGTGGTACCATGACCCTGTGCTATGCCAGGATCTCCCGGAGCTCTGGTTCAGGAGCAGTCCCTGG  
GTTCCAGACGGAGCAGATTCGCAAGCGGCTGCGCTGCCGAGGAAGACGGTCTGGTGTGCTCATGTGCATT  
CTCACGGCCTATGTGCTGTGCTGGGCACCCTTACGGTTTCACCATCGTTCGTGACTTCTCCCACTG  
TGTTTCGTGAAGGAAAAGCACTACCTCACTGCCTTCTACGTGGTTCGAGTGCATCGCCATGAGCAACAGAAT  
GATCAACACCGTGTGCTTCGTGACGGTCAAGAACAACACCATGAAGTACTTCAAGAAGATGATGCTGCTG  
CACTGGCGTCCCTCCAGCGGGGAGCAAGTCCAGTGTGACCTTACCTCAGAACCAACGGGGTCCCCA  
CCACAGAAGAGGTGGACTGTATCAGGCTGAAG

**ACGCGT**ACGCGGCCGCTCGAGCAGAACTCATCTCAGAAGAGGATCTGGCAGCAATGATATCCTGGATT  
ACAAGGATGACGACGATAAGGTTTAA



[View online »](#)

**Protein Sequence:** >RC211216 representing NM\_144773  
Red=Cloning site Green=Tags(s)

MAAQNGNTSFTPNFNPPQDHASSLSFNFSYGDYDLPMEDEDMTKTRTFFAAKIVIGIALAGIMLVCGIG  
 NFVFIAALTRYKCLRNLTNLLIANLAISDFLVAIICCPFEMDYVVRQLSWEHGHVLCASVNYLRTVSLY  
 VSTNALLAIAIDRYLAIVHPLKPRMNYQTASFLIALVMMVSILIAIPSAYFATETVLFIVKSQEKIFCGQ  
 IWPVDQQLYYKSYFLFIFGVEFVGPVVTMTLCYARISRELWFKAVPGFQTEQIRKRLRCRRKTVLVLMCI  
 LTAYVLCWAPFYGFTIVRDFPPTVVFVKEKHYLTAFYVVECIAMSNRMINTVCFVTYKNNMTKYFKKMMLL  
 HWRPSQRGSKSSADLDLRTNGVPTTEEVDCIRLK

TRTRPLEQKLISEEDLAANDILDYKDDDDKV

**Chromatograms:** [https://cdn.origene.com/chromatograms/mg2565\\_g04.zip](https://cdn.origene.com/chromatograms/mg2565_g04.zip)

**Restriction Sites:** SgfI-MluI

**Cloning Scheme:**



\* The last codon before the Stop codon of the ORF

**ACCN:** NM\_144773

**ORF Size:** 1152 bp

**OTI Disclaimer:** The molecular sequence of this clone aligns with the gene accession number as a point of reference only. However, individual transcript sequences of the same gene can differ through naturally occurring variations (e.g. polymorphisms), each with its own valid existence. This clone is substantially in agreement with the reference, but a complete review of all prevailing variants is recommended prior to use. [More info](#)

**OTI Annotation:** This clone was engineered to express the complete ORF with an expression tag. Expression varies depending on the nature of the gene.

**Components:** The ORF clone is ion-exchange column purified and shipped in a 2D barcoded Matrix tube containing 10ug of transfection-ready, dried plasmid DNA (reconstitute with 100 ul of water).

**Reconstitution Method:**

1. Centrifuge at 5,000xg for 5min.
2. Carefully open the tube and add 100ul of sterile water to dissolve the DNA.
3. Close the tube and incubate for 10 minutes at room temperature.
4. Briefly vortex the tube and then do a quick spin (less than 5000xg) to concentrate the liquid at the bottom.
5. Store the suspended plasmid at -20°C. The DNA is stable for at least one year from date of shipping when stored at -20°C.

**RefSeq:** [NM\\_144773.4](#)

**RefSeq Size:** 1155 bp

**RefSeq ORF:** 1155 bp

**Locus ID:** 128674

**UniProt ID:** [Q8NFJ6](#)

**Cytogenetics:** 20p12.3

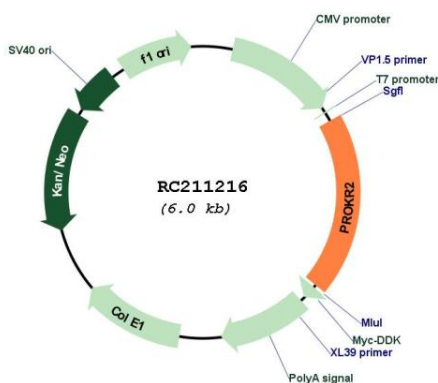
**Domains:** 7tm\_1

**Protein Families:** Druggable Genome, GPCR, Transmembrane

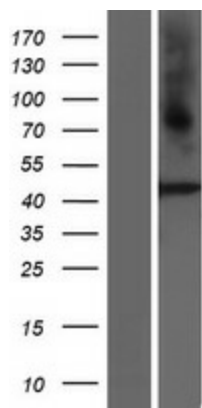
**MW:** 43.8 kDa

**Gene Summary:** Prokineticins are secreted proteins that can promote angiogenesis and induce strong gastrointestinal smooth muscle contraction. The protein encoded by this gene is an integral membrane protein and G protein-coupled receptor for prokineticins. The encoded protein is similar in sequence to GPR73, another G protein-coupled receptor for prokineticins. [provided by RefSeq, Jul 2008]

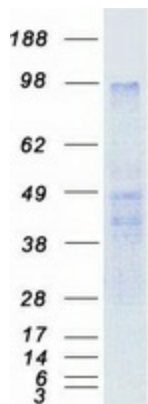
### Product images:



Circular map for RC211216



Western blot validation of overexpression lysate (Cat# [LY403411]) using anti-DDK antibody (Cat# [TA50011-100]). Left: Cell lysates from untransfected HEK293T cells; Right: Cell lysates from HEK293T cells transfected with RC211216 using transfection reagent MegaTran 2.0 (Cat# [TT210002]).



Coomassie blue staining of purified PROKR2 protein (Cat# [TP311216]). The protein was produced from HEK293T cells transfected with PROKR2 cDNA clone (Cat# RC211216) using MegaTran 2.0 (Cat# [TT210002]).