

Product datasheet for **RC211214**

PVRL1 (NECTIN1) (NM_002855) Human Tagged ORF Clone

Product data:

Product Type:	Expression Plasmids
Product Name:	PVRL1 (NECTIN1) (NM_002855) Human Tagged ORF Clone
Tag:	Myc-DDK
Symbol:	PVRL1
Synonyms:	CD111; CLPED1; ED4; HlgR; HV1S; HVEC; nectin-1; OFC7; PRR; PRR1; PVRL1; PVRR; PVRR1; SK-12
Mammalian Cell Selection:	Neomycin
Vector:	pCMV6-Entry (PS100001)
E. coli Selection:	Kanamycin (25 ug/mL)



[View online »](#)

ORF Nucleotide Sequence:

>RC211214 ORF sequence
 Red=Cloning site Blue=ORF Green=Tags(s)

TTTTGTAATACGACTCACTATAGGGCGGCCGGAATTCGTCGACTGGATCCGGTACCGAGGAGATCTGCC
 GCC**CGGATCGCC**

ATGGCTCGGATGGGGCTTGC GGCGCCGCTGGACGCTGGTGGGACTCGCTCTCGGCTTGACCCGATTCT
 TCCTCCCAGGCGTCCACTCCCAGGTGGTCCAGGTGAACGACTCCATGTATGGCTTCATCGGCACAGACGT
 GGTTCGCACTGCAGCTTTGCCAACCCGCTTCCAGCGTGAAGATCACCCAGGTACATGGCAGAAGTCC
 ACCAATGGCTCCAAGCAGAACGTGGCCATCTACAACCCATCCATGGGCGTGTCCGTGCTGGCTCCCTACC
 GCGAGCGTGTGGAATTCCTGCGGCCCTCCTTACCAGTGGCACTATCCGCTCTCCCGCTGGAGCTGGA
 GGATGAGGGTGTACATCTGCGAGTTTGTACCTTCCCTACGGGCAATCGAGAAAGCCAGCTCAATCTC
 ACGGTGATGGCCAAACCCACCAATTGGATAGAGGGTACCCAGGCAGTGTTCGAGCCAAGAAGGGGCAGG
 ATGACAAGGTCTGGTGGCCACCTGCACCTCAGCCAATGGGAAGCCTCCCAGTGTGGTATCTGGGAAAC
 TCGGTTAAAAGGTGAGGCAGAGTACCAGGAGATCCGGAACCCCAATGGCAGAGTACGGTATCAGCCGC
 TACCGCTGGTGGCCAGCAGGAAAGCCACCAGCAGTCCCTGGCCTGCATCGTCAACTACCACATGGACC
 GCTTCAAGGAAAGCCTCACTCTCAACGTGACGATGAGCCTGAGGTAACCATTGAGGGGTTTGATGGCAA
 CTGGTACTGCAGCGGATGGACGTGAAGCTCACCTGCAAAGCTGATGCTAACCCCCAGCCACTGAGTAC
 CACTGGACCACGCTAAATGGCTCTCTCCCAAGGGTGTGGAGGCCAGAACAGAACCCCTCTTCTTCAAGG
 GACCCATCAACTACAGCTGGCAGGGACCTACATCTGTGAGGCCACCAACCCCATCGGTACACGCTCAGG
 CCAGGTGGAGGTCAATATCACAGAATCCCCTACACCCGCTCTCTCCGAACATGGGCGGCGCGCCGGG
 CCGGTGCCACGCCATCATTGGGGCGTGGCGGGGAGCATCTGCTGGTGTGATTGTGGTTCGGCGGGA
 TCGTGGTCCGCTGCGTGGCGCCGGCACACCTCAAGGGTGACTACAGCACCAAGAAGCAGTGTATGG
 CAACGGCTACAGCAAGGCAGGCATCCCCCAGCACCCACCCACCAATGGCACAGAACCCTGCAGTACCCGAC
 GACTCAGACGACGAGAAGAAGGCCGCCACTGGGTGGAAGCAGCTATGAGGAGGAGGAGGAGGAGGAGG
 AGGGCGGTGGAGGGGGCAGCGCAAGGTGGGCGGCCCCCAACCCAAATGACGAGGACGCCAAGCGGCC
 CTACTTACCCTGGATGAGGCCGAGGCCGCTCAGGACGGCTACGGGGACCCGACTCTGGGCTACCAGTAC
 GACCCTGAGCAGCTGGACTTGGCTGAGAACATGGTTTCTCAGAACGACGGGTCTTTCATTTCAAGAAGG
 AGTGGTACGTG

ACGCGTACGCGGCCGCTCGAGCAGAACTCATCTCAGAAGAGGATCTGGCAGCAAATGATATCTGGATT
 ACAAGGATGACGACGATAAGGTTTAA

Protein Sequence:

>RC211214 protein sequence
 Red=Cloning site Green=Tags(s)

MARMGLAAGRWGLALGLTAFPLPGVHSQVVQVNDMSYGFIGTDVVLHCSFANPLPSVKITQVTWQKS
 TNGSKQNVAIYNPSMGVSVLAPYRERVEFLRPSFTDGTIRLSRLELEDEGVYICEFATFPTGNRESQLNL
 TVMAKPTNWIETQAVLRAKKGQDDKVLVATCTSANGKPPSVVSWETRLKGEAEYQEIRNPNGTIVISR
 YRLVPSREAHQQSLACIVNYHMDRFKESLTLNVQYEPEVTIEGFDGNWYLQRMVCLKTCKADANPPATEY
 HWTTLNGSLPKGVEAQNRTLFFKGPINYSLAGTYICEATNPIGTRSGQVEVNITEFPYTPSPPEHRRAG
 PVPTAIIIGGVAGSILLVLI VVGIVVALRRRRHTFKGDYSTKHHVYNGYKAGIPQHHPMAQNLQYPD
 DSDDEKKAGPLGSSYEEEEEEEEGGGGGERKVGPHPKYDEDAKRPYFTVDEAEARQDGYGDRTLGYQY
 DPEQLDLAENMVSQNDGFSISKWEVY

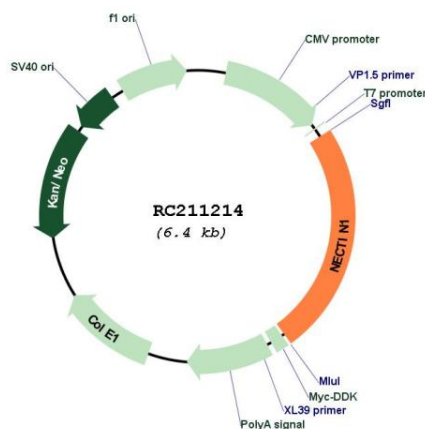
TRTRPLEQKLISEEDLAANDILDYKDDDDKV

Restriction Sites:

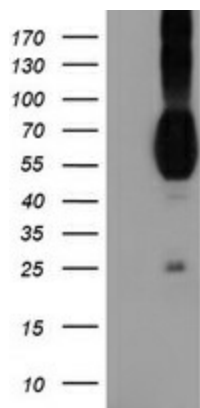
Sgfl-MluI

RefSeq:	NM_002855.5
RefSeq Size:	5493 bp
RefSeq ORF:	1554 bp
Locus ID:	5818
UniProt ID:	Q15223
Cytogenetics:	11q23.3
Domains:	ig, IGv, IGc2, IG
Protein Families:	Druggable Genome, ES Cell Differentiation/IPS, Transmembrane
Protein Pathways:	Adherens junction, Cell adhesion molecules (CAMs)
MW:	57.2 kDa
Gene Summary:	This gene encodes an adhesion protein that plays a role in the organization of adherens junctions and tight junctions in epithelial and endothelial cells. The protein is a calcium(2+)-independent cell-cell adhesion molecule that belongs to the immunoglobulin superfamily and has 3 extracellular immunoglobulin-like loops, a single transmembrane domain (in some isoforms), and a cytoplasmic region. This protein acts as a receptor for glycoprotein D (gD) of herpes simplex viruses 1 and 2 (HSV-1, HSV-2), and pseudorabies virus (PRV) and mediates viral entry into epithelial and neuronal cells. Mutations in this gene cause cleft lip and palate/ectodermal dysplasia 1 syndrome (CLPED1) as well as non-syndromic cleft lip with or without cleft palate (CL/P). Alternative splicing results in multiple transcript variants encoding proteins with distinct C-termini. [provided by RefSeq, Oct 2009]

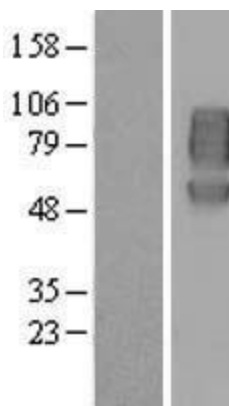
Product images:



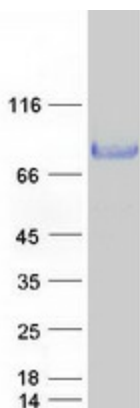
Circular map for RC211214



HEK293T cells were transfected with the pCMV6-ENTRY control (Cat# [PS100001], Left lane) or pCMV6-ENTRY PVRL1 (Cat# RC211214, Right lane) cDNA for 48 hrs and lysed. Equivalent amounts of cell lysates (5 ug per lane) were separated by SDS-PAGE and immunoblotted with anti-PVRL1 (Cat# [TA503521]). Positive lysates [LY419083] (100ug) and [LC419083] (20ug) can be purchased separately from OriGene.



Western blot validation of overexpression lysate (Cat# [LY419083]) using anti-DDK antibody (Cat# [TA50011-100]). Left: Cell lysates from untransfected HEK293T cells; Right: Cell lysates from HEK293T cells transfected with RC211214 using transfection reagent MegaTran 2.0 (Cat# [TT210002]).



Coomassie blue staining of purified NECTIN1 protein (Cat# [TP311214]). The protein was produced from HEK293T cells transfected with NECTIN1 cDNA clone (Cat# RC211214) using MegaTran 2.0 (Cat# [TT210002]).