

## Product datasheet for RC211206

### POU4F3 (NM\_002700) Human Tagged ORF Clone

#### Product data:

Product Type:	Expression Plasmids
Product Name:	POU4F3 (NM_002700) Human Tagged ORF Clone
Tag:	Myc-DDK
Symbol:	POU4F3
Synonyms:	BRN3C; DFNA15; DFNA42; DFNA52
Mammalian Cell Selection:	Neomycin
Vector:	pCMV6-Entry (PS100001)
E. coli Selection:	Kanamycin (25 ug/mL)
ORF Nucleotide Sequence:	>RC211206 ORF sequence Red=Cloning site Blue=ORF Green=Tags(s)

TTTTGTAATACGACTCACTATAGGGCGCCGGGAATTCGTCGACTGGATCCGGTACCGAGGAGATCTGCC  
GCC**CGATCGC**C

ATGATGGCCATGAACTCCAAGCAGCCTTTCGGCATGCACCCGGTGTGCAAGAACCCAAATTCTCCAGTC  
TGCCTCTGGCTCCGAGGCTATGCGCCGAGTCTGTCTCCAGCCCCGAGCTGCAGGGTAATATATTTGG  
AAGCTTTGATGAGAGCCTGCTGGCACGCGCCGAAGCTCTGGCGCGGTGGATATCGTCTCCACGGCAAG  
AACCATCCGTTCAAGCCGACGCCACCTACCATACCATGAGCAGCGTCCCTGCACGTCCACTTCGTCCA  
CCGTGCCATCTCCACCCAGCTGCGCTCACCTCACACCTCACACCGGTGCACAGGGCCTCGAAGG  
CGACTGCTGGAGCACATCTCGCCACGCTGAGTGTGAGCGGCCTGGGCGCTCCGGAACACTCGGTGATG  
CCCGCACAGATCCATCCACACCCTGGGCGCCATGGGCCACCTGCACAGGCCATGGGCATGAGTCACC  
CGCACACCGTGGCCCTCATAGCGCCATGCCTGCATGCCTCAGCGACGTGGAGTCAGACCCGCGCGAGCT  
GGAAGCCTTCGCCGAGCGCTTCAAGCAGCGGCGCATCAAGCTGGGGGTGACCCAGGCGGAGCTGGGCGCG  
GCTCTGGTAATCTCAAGATCCCCGGCTGGGCTCGTGTAGCCAAAGCACCATCTGCAGGTTGAGTCTC  
TCACTCTCTCGACAACAACATGATCGTCTCAAGCCGGTGTCCAGGCCTGGTTGGAGGAGGCCGAGGC  
CGCCTACCGAGAGAAGAAGCAGCAAGCCAGAGCTTTCAACGGCAGCGAACGGAAGCGCAAACGCACGTCC  
ATCGCGGCGCCGAGAAGCGTTCACTCGAGGCCTATTTTCGCTATCCAGCCACGTCTTCACTGAGAAGA  
TCGCGGCATCGCTGAGAACTGGACCTTAAAAAGAACGTGGTGTGAGAGTCTGGTTCTGCAACCAGAGACA  
GAAACAGAAACGAATGAAGTATTCGGCTGTCCAC

**ACGCGT**ACGCGGCCGCTCGAGCAGAAACTCATCTCAGAAGAGGATCTGGCAGCAAATGATATCCTGGATT  
ACAAGGATGACGACGATAAGGTTTAA



[View online »](#)

**Protein Sequence:** >RC211206 protein sequence  
Red=Cloning site Green=Tags(s)

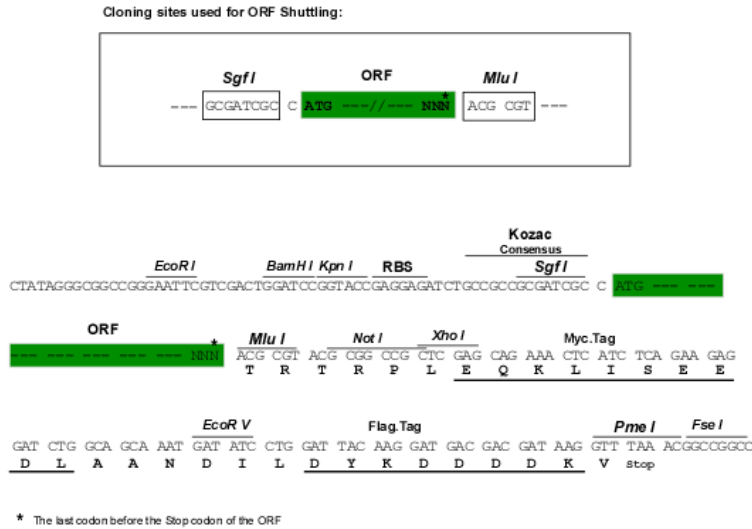
MMAMNSKQPFGMHPVLQEPKFSSSLHSGSEAMRRVCLPAPQLQGNIFGSFDESLLARAEALAAVDIVSHGK  
 NHPFKPDATYHTMSSVPCTSTSSVPI SHPAAL TSHPHHAVHQLEGLLEHISPTLSVSGLGAPEHSVM  
 PAQIHPHHLGAMGHLHQAMGMSHPHTVAPHSAMPACLSDVESDPRELEAF AERFKQRRIKLGV TQADVGA  
 ALANLKIPGVGSLSQSTICRFESLTL SHNMIALKPV LQAWLEEA EAAAYREKNSKPELFNGSERKRRKRTS  
 IAAPEKRSLEAYFAIQRPSPSEKIAAIAEKLDLKKNVVRVWF CNQRQKQKRMKYS AVH

TRTRPLEQKLISEEDLAANDILDYKDDDDKV

**Chromatograms:** [https://cdn.origene.com/chromatograms/mk6130\\_e11.zip](https://cdn.origene.com/chromatograms/mk6130_e11.zip)

**Restriction Sites:** SgfI-MluI

**Cloning Scheme:**



**ACCN:** NM\_002700

**ORF Size:** 1014 bp

**OTI Disclaimer:** The molecular sequence of this clone aligns with the gene accession number as a point of reference only. However, individual transcript sequences of the same gene can differ through naturally occurring variations (e.g. polymorphisms), each with its own valid existence. This clone is substantially in agreement with the reference, but a complete review of all prevailing variants is recommended prior to use. [More info](#)

**OTI Annotation:** This clone was engineered to express the complete ORF with an expression tag. Expression varies depending on the nature of the gene.

**Components:** The ORF clone is ion-exchange column purified and shipped in a 2D barcoded Matrix tube containing 10ug of transfection-ready, dried plasmid DNA (reconstitute with 100 ul of water).

**Reconstitution Method:**

1. Centrifuge at 5,000xg for 5min.
2. Carefully open the tube and add 100ul of sterile water to dissolve the DNA.
3. Close the tube and incubate for 10 minutes at room temperature.
4. Briefly vortex the tube and then do a quick spin (less than 5000xg) to concentrate the liquid at the bottom.
5. Store the suspended plasmid at -20°C. The DNA is stable for at least one year from date of shipping when stored at -20°C.

**RefSeq:** [NM\\_002700.1](#), [NP\\_002691.1](#)

**RefSeq Size:** 1182 bp

**RefSeq ORF:** 1017 bp

**Locus ID:** 5459

**UniProt ID:** [Q15319](#)

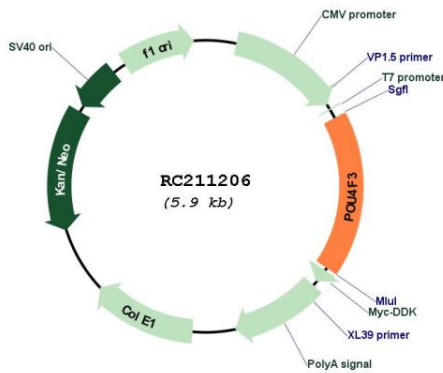
**Cytogenetics:** 5q32

**Protein Families:** Transcription Factors

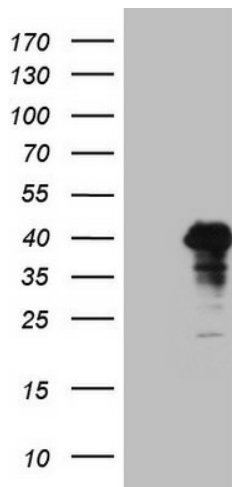
**MW:** 37.1 kDa

**Gene Summary:** This gene encodes a member of the POU-domain family of transcription factors. POU-domain proteins have been observed to play important roles in control of cell identity in several systems. This protein is found in the retina and may play a role in determining or maintaining the identities of a small subset of visual system neurons. Defects in this gene are the cause of non-syndromic sensorineural deafness autosomal dominant type 15. [provided by RefSeq, Mar 2009]

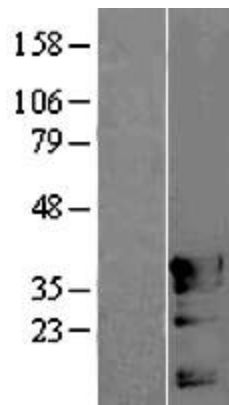
**Product images:**



Circular map for RC211206



HEK293T cells were transfected with the pCMV6-ENTRY control (Cat# [PS100001], Left lane) or pCMV6-ENTRY POU4F3 (Cat# RC211206, Right lane) cDNA for 48 hrs and lysed. Equivalent amounts of cell lysates (5 ug per lane) were separated by SDS-PAGE and immunoblotted with anti-POU4F3 (Cat# [TA808731])(1:2000). Positive lysates [LY400949] (100ug) and [LC400949] (20ug) can be purchased separately from OriGene.



Western blot validation of overexpression lysate (Cat# [LY400949]) using anti-DDK antibody (Cat# [TA50011-100]). Left: Cell lysates from untransfected HEK293T cells; Right: Cell lysates from HEK293T cells transfected with RC211206 using transfection reagent MegaTran 2.0 (Cat# [TT210002]).