

Product datasheet for **RC211202**

GLIS1 (NM_147193) Human Tagged ORF Clone

Product data:

| | |
|---------------------------|--|
| Product Type: | Expression Plasmids |
| Product Name: | GLIS1 (NM_147193) Human Tagged ORF Clone |
| Tag: | Myc-DDK |
| Symbol: | GLIS1 |
| Mammalian Cell Selection: | Neomycin |
| Vector: | pCMV6-Entry (PS100001) |
| E. coli Selection: | Kanamycin (25 ug/mL) |



[View online »](#)

ORF Nucleotide Sequence:

>RC211202 ORF sequence
 Red=Cloning site Blue=ORF Green=Tags(s)

TTTTGTAATACGACTCACTATAGGGCGGCCGGGAATTCGTCGACTGGATCCGGTACCGAGGAGATCTGCC
 GCC**CGGATCGCC**

ATGGCAGAGGCCCGCACATCCCTGTCTGCCACTGTCTGGGGCCCGCTGGCCACTGGCCTGCACCCAGACC
 TGGACCTCCCGGGCCGAAGCCTCGCCACCCTGCGCCTTCTGCTACCTTCTGGGAGCGAACCCAGCTC
 TGGCCTGGGCTCCAGCCGAGACCCACCTCCCGAGGGCAGCCTGAAGCGGTGCTGCGTCTTGGGCCTA
 CCCCCACCTCCCAGCCTCCTCCTCACCTGTGCCTCCTCCGACGTACCTCCATCATCCGCTCCTCCC
 AGACGTCTCTGGTACCTGTGTAATGGACTCCGGAGCCCCCTCTGACGGGAGATCTGGGGGGCCCTTC
 CAAGCGGGCCCGCCTGGCCCTGCATCGACGGACAGCCATGAGGGCAGCTTGCAACTGAAGCTGCCGG
 AAGGCGAGCTTCTGAAGCAGGAACCCCGGATGAGTTTTAGAGCTCTTGGGCCTCACCAGCAGGGCC
 TGGCGCCCCCTATCCCCTGTCTCAGTTGCCGCTGGCCAAGCCTTGGAGGCTGGGGCTGGGCTGGC
 AGGCAGGTGGTGGCCGGCGGCAGGCGTGCCGCTGGGTGGACTGCTGTGCAGCCTATGAGCAGCAGGAG
 GAGCTGGTGGGCACATCGAGAAGAGCCACATCGACCAGCGCAAGGGCGAGGACTTCACCTGCTTCTGGG
 CTGGCTGCGTGGCCCGCTACAAGCCCTCAACGCCGCTACAAGCTGCTCATCCACATGCGAGTGCCTC
 GGGCGAGAAGCCCAACAAGTGCATGTTGAAGGCTGCAGCAAGGCCTTCTCACGGCTGGAGAACCTCAAG
 ATCCACCTGAGGAGCCACACGGGCGAGAAGCCGTACCTGTGCCAGCACCCGGGTTGCCAGAAGCCCTTCA
 GCAACTCCAGCGACCCGCGCAAGCACCAGCGCACCCACCTAGACACGAAGCCGTACGCTGTGAGATCCC
 TGGCTGCTCAAGCGCTACACAGACCCAGCTCCCTCCGAAGCAGCTCAAGGCCATTCAGCCAAAGAG
 CAGCAGGTGCGTAAGAAGCTGCATGCGGGCCCTGACACCGAGGCCGACGTCCTGACCGAGTGTCTGGTCC
 TGCAGCAGCTCCACACGTCCACACAGCTGGCTGCCAGCAGCGCAAGGGTGGCTGTGGCTGGGCCAGGA
 GCTGCTCCAGGTGTGTATCCTGGCTCCATCACCCCCATAACGGAAGTTCATCGGGCCTCCTGCCCCCA
 GCGCACGAGCTACCTCCAGGCACCACCCGCTGGATGCCACCACAGTCCACACCACATCTGTCCCTC
 TGCCATGGCTGAGAGCACCCGGGATGGGTTGGGGCCCGCCTCCTCACCAATAGTACGCCCCCTGAA
 GGGGCTGGGGCCACCGCCGCTGCCCCATCCTCTCAGAGCCATTCTCCGGGGGGCCAGCCCTTCCCACA
 CTCCCAGCAAGCCGCTCCTACCCACCTCCAGAGCCCTCACCCCGCCTTGGCCAGCCACAAGGTT
 ACCAGGGCAGTTTCCACTCCATCCAGAGTTGCTTCCCCTATGGCGACTGCTACCGGATGGCTGAACCAGC
 AGCCGGTGGGGACGGACTGGTGGGGAGACCCACGGTTTCAACCCCTGCGGCCCAATGGCTACCACAGC
 CTCAGCAGCCCTTGCTGCCACAGGCTATGAGGCCCTGGCTGAGGCCTCATGCCCCACAGCGCTGCCAC
 AGCAGCCATCTGAAGATGTGGTGTCCAGCGGCCCGAGGACTGTGGCTTCTCCCAATGGAGCCTTTGA
 CCACTGCCTGGGCCACATCCCCTCCATCTACACAGACACC

ACGCGTACGCGGCCGCTCGAGCAGAACTCATCTCAGAAGAGGATCTGGCAGCAAATGATATCCTGGATT
 ACAAGGATGACGACGATAAGGTTTAA

Protein Sequence:

>RC211202 protein sequence
 Red=Cloning site Green=Tags(s)

MAEARTSLSAHCRGPLATGLHPDLPLPGRSLATPAPSCYLLGSEPPSSGLGLQPETHLPEGSLKRCCVLGL
 PPTSPASSSPCASSDVTSIIIRSSQTSLVTCVNLGRSPPLTGDLDGGPSKRARPGPASTDSHEGSLQLEACR
 KASFLKQEPADSELFQPHQQLPPYPLSQLPPGSLGGLGLLAGRVVAGRQACRWVDCAAAYEQQE
 ELVRHIEKSHIDQRKGEDFTCFWAGCVRRYKPFNARYKLLIHMVHSGEKPNKCMFEGCSKAFSRLNLK
 IHLRSHTGEKPYLCQHPGCQKAFSNSSDRAKHQRTHLDTKPYACQIPGCSKRYTDPSSLRKHVKAHSAKE
 QQVRKKLHAGPDTEADVLTECLVLQQLHTSTQLAASDGKGGCGLGQELLPGVYPGSITPHNGLASGLLPP
 AHDVPSRHHPLDATTSSHHHLSPLPMAESTRDGLGPGLLSPIVSLKGLGPPPLPSSQSHSPGGQPFPT
 LPSKPSYPPFQSPPPPPLPSPQGYQGSFHSIQSCFPYGDYRMAEPAAGGDGLVGETHGFNPLRPNGYHS
 LSTPLPATGYEALAEASCPALPQQPSEDVSSGPEDCGFFPNGAFDHCLGHIPSIYTD

TRTRPLEQKLISEEDLAANDILDYKDDDDKV

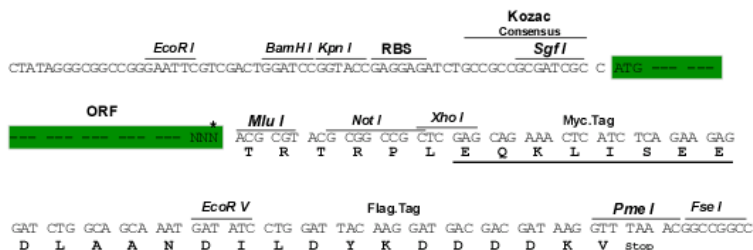
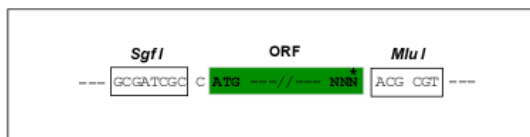
Chromatograms:

https://cdn.origene.com/chromatograms/mk6373_f09.zip

Restriction Sites: SgfI-MluI

Cloning Scheme:

Cloning sites used for ORF Shuttling:



* The last codon before the Stop codon of the ORF

ACCN: NM_147193

ORF Size: 1860 bp

OTI Disclaimer: The molecular sequence of this clone aligns with the gene accession number as a point of reference only. However, individual transcript sequences of the same gene can differ through naturally occurring variations (e.g. polymorphisms), each with its own valid existence. This clone is substantially in agreement with the reference, but a complete review of all prevailing variants is recommended prior to use. [More info](#)

OTI Annotation: This clone was engineered to express the complete ORF with an expression tag. Expression varies depending on the nature of the gene.

Components: The ORF clone is ion-exchange column purified and shipped in a 2D barcoded Matrix tube containing 10ug of transfection-ready, dried plasmid DNA (reconstitute with 100 ul of water).

Reconstitution Method:

1. Centrifuge at 5,000xg for 5min.
2. Carefully open the tube and add 100ul of sterile water to dissolve the DNA.
3. Close the tube and incubate for 10 minutes at room temperature.
4. Briefly vortex the tube and then do a quick spin (less than 5000xg) to concentrate the liquid at the bottom.
5. Store the suspended plasmid at -20°C. The DNA is stable for at least one year from date of shipping when stored at -20°C.

RefSeq: [NM_147193.2](#)

RefSeq Size: 2816 bp

RefSeq ORF: 1863 bp

Locus ID: 148979

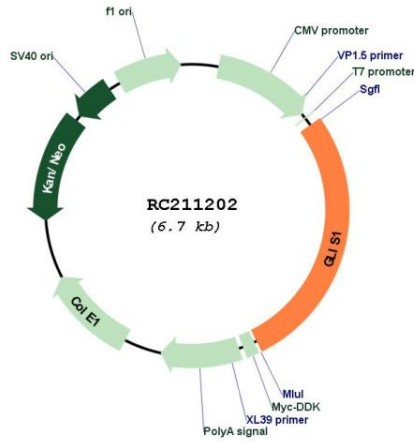
UniProt ID: [Q8NBF1](#)

Cytogenetics: 1p32.3

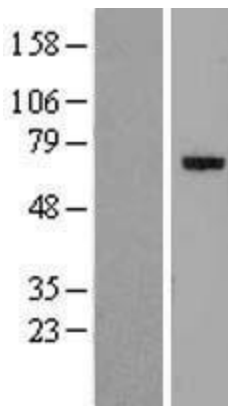
MW: 66 kDa

Gene Summary: GLIS1 is a GLI (MIM 165220)-related Kruppel-like zinc finger protein that functions as an activator and repressor of transcription (Kim et al., 2002 [PubMed 12042312]).[supplied by OMIM, Mar 2008]

Product images:



Circular map for RC211202



Western blot validation of overexpression lysate (Cat# [LY407786]) using anti-DDK antibody (Cat# [TA50011-100]). Left: Cell lysates from untransfected HEK293T cells; Right: Cell lysates from HEK293T cells transfected with RC211202 using transfection reagent MegaTran 2.0 (Cat# [TT210002]).