

Product datasheet for RC211194

GPCR MRGE (MRGPRE) (NM_001039165) Human Tagged ORF Clone

Product data:

Product Type:	Expression Plasmids
Product Name:	GPCR MRGE (MRGPRE) (NM_001039165) Human Tagged ORF Clone
Tag:	Myc-DDK
Symbol:	GPCR MRGE
Synonyms:	GPR167; MGRF; MRGE
Mammalian Cell Selection:	Neomycin
Vector:	pCMV6-Entry (PS100001)
E. coli Selection:	Kanamycin (25 ug/mL)
ORF Nucleotide Sequence:	>RC211194 ORF sequence Red=Cloning site Blue=ORF Green=Tags(s)

TTTTGTAATACGACTCACTATAGGGCGGCCGGAATTCGTCGACTGGATCCGGTACCGAGGAGATCTGCC
GCC**CGATCGCC**

ATGGAGCCAGAGAAGCTGGACAGCACGTGGGGCCGCCAACGGCGCCCAGGAGGATGTGGCCTTCAACC
TCATCATCCTGTCCCTACCGAGGGCTCGGCCTCGGTGGGCTGCTGGGAATGGGGCAGTCCTTGCT
GCTCAGCTCCAATGTCTACAGAAACCCCTTCGCCATCTACCTCCTGGACGTGGCCTGCGCGGATCTCATC
TTCCTTGGCTGCCACATGGTGGCCATCGTCCCGACTTGCTGCAAGGCCGGCTGGACTTCCCGGGCTTCG
TGCAGACCAGCCTGGCAACGCTGCGCTTCTTCTGCTACATCGTGGCCTGAGTCTCCTGGCGGCCGTCAG
CGTGGAGCAGTGCCTGGCCGCCCTTCCAGCCCTGGTACTCGTGCCGCCGCCACGCCACCTGACCACC
TGTGTGTGCGCCCTCACCTGGGCCCTTGCTGCTGCTGACCTGCTGCTCAGCGGCCCTGCACCCAGT
TCTTCGGGGAGCCAGCCGCCACTTGTGCCGACGCTGTGGCTGGTGGCAGCGGTGCTGCTGGCTGCT
GTGTTGCACCATGTGTGGGGCCAGCCTTATGCTGCTGCTGCGGGTGGAGCGAGGCCCCAGCGGCCCCCA
CCCCGGGGCTTCCCTGGGCTCATCCTCCTACCGTCTCCTCTTCTCTTCTGCGGCCTGCCCTTCGGCA
TCTACTGGCTGTCCCGAACCTGCTCTGGTACATCCCCACTACTTCTACCACTCAGCTTCTCATGGC
CGCCGTGCACTGCGCGGCCAAGCCCGTCTACTTCTGCCTGGGCGAGTCCAGGGCCGAGGCTGCCC
CTCCGGCTGGTCTCCAGCGAGCGTGGAGACGAGGCTGAGCTGGGGCCGTCAGGGAGACCTCCCGCC
GGGCCTGGTGGACATAGCAGCC

ACGCGTACGCGGCCGCTCGAGCAGAAACTCATCTCAGAAGAGGATCTGGCAGCAAATGATATCCTGGATT
ACAAGGATGACGACGATAAGGTTTAA



[View online »](#)

Protein Sequence: >RC211194 protein sequence
Red=Cloning site Green=Tags(s)

MEPREAGQHVGAAQAQEDVAFNLIILSLTEGLGLGGLLNGAVLWLLSSNVYRNPFAIYLLDVACADLI
 FLGCHMVAIVPDLQGRDLDFPGFVQTSLATLRRFCYIVGLSLLAAVSVEQCLAALFPAWYSCRRRPHLTT
 CVCALTWALCLLLHLLSGACTQFFGEPSSRHLCRTLWLVAVLLALLCCTMCGASMLLLRVERGPQRPP
 PRGFPGILLTLLVLLFLFCGLPFGIYWLSRNLWYIPHYFYHFSFLMAAVHCAAKPVVYFCLGSAQGRRLP
 LRLVLQRALGDEAELGAVRETSRRGLVDIAA

TRTRPLEQKLISEEDLAANDILDYKDDDDKV

Chromatograms: https://cdn.origene.com/chromatograms/mk6373_g05.zip

Restriction Sites: SgfI-MluI

Cloning Scheme:



ACCN: NM_001039165

ORF Size: 933 bp

OTI Disclaimer: The molecular sequence of this clone aligns with the gene accession number as a point of reference only. However, individual transcript sequences of the same gene can differ through naturally occurring variations (e.g. polymorphisms), each with its own valid existence. This clone is substantially in agreement with the reference, but a complete review of all prevailing variants is recommended prior to use. [More info](#)

OTI Annotation: This clone was engineered to express the complete ORF with an expression tag. Expression varies depending on the nature of the gene.

Components: The ORF clone is ion-exchange column purified and shipped in a 2D barcoded Matrix tube containing 10ug of transfection-ready, dried plasmid DNA (reconstitute with 100 ul of water).

Reconstitution Method:

1. Centrifuge at 5,000xg for 5min.
2. Carefully open the tube and add 100ul of sterile water to dissolve the DNA.
3. Close the tube and incubate for 10 minutes at room temperature.
4. Briefly vortex the tube and then do a quick spin (less than 5000xg) to concentrate the liquid at the bottom.
5. Store the suspended plasmid at -20°C. The DNA is stable for at least one year from date of shipping when stored at -20°C.

RefSeq: [NM_001039165.1](#), [NP_001034254.1](#)

RefSeq Size: 1296 bp

RefSeq ORF: 939 bp

Locus ID: 116534

UniProt ID: [Q86SM8](#)

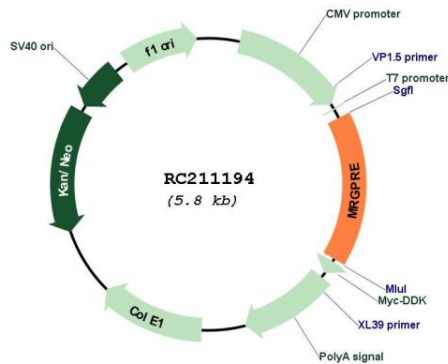
Cytogenetics: 11p15.4

Protein Families: Druggable Genome, Transmembrane

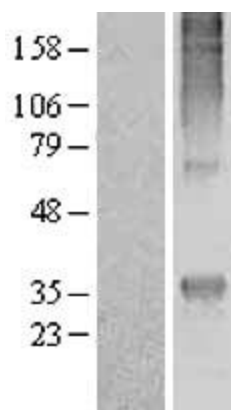
MW: 34.2 kDa

Gene Summary: Orphan receptor. May regulate nociceptor function and/or development, including the sensation or modulation of pain.[UniProtKB/Swiss-Prot Function]

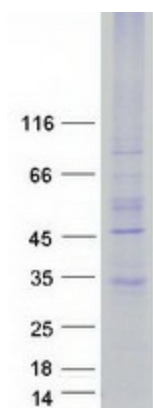
Product images:



Circular map for RC211194



Western blot validation of overexpression lysate (Cat# [LY422024]) using anti-DDK antibody (Cat# [TA50011-100]). Left: Cell lysates from untransfected HEK293T cells; Right: Cell lysates from HEK293T cells transfected with RC211194 using transfection reagent MegaTran 2.0 (Cat# [TT210002]).



Coomassie blue staining of purified MRGPRES protein (Cat# [TP311194]). The protein was produced from HEK293T cells transfected with MRGPRES cDNA clone (Cat# RC211194) using MegaTran 2.0 (Cat# [TT210002]).