

## Product datasheet for RC211191

### NAP1L5 (NM\_153757) Human Tagged ORF Clone

#### Product data:

Product Type:	Expression Plasmids
Product Name:	NAP1L5 (NM_153757) Human Tagged ORF Clone
Tag:	Myc-DDK
Symbol:	NAP1L5
Synonyms:	DRLM
Mammalian Cell Selection:	Neomycin
Vector:	pCMV6-Entry (PS100001)
E. coli Selection:	Kanamycin (25 ug/mL)
ORF Nucleotide Sequence:	>RC211191 ORF sequence Red=Cloning site Blue=ORF Green=Tags(s)

TTTTGTAATACGACTCACTATAGGGCGCCGGGAATTCGTCGACTGGATCCGGTACCGAGGAGATCTGCC  
GCC**CGATCGCC**

ATGGCCGACTCGGAAAACCAGGGGCTGCGGAGCCTAGCCAGGCGGCGCAGCGCGGAGGCAGCGGCGG  
AGGAGGTAAATGGCGGAAGGCGGTGCGCAGGGTGGAGACTGTGACAGCGCGGCTGGTGACCCTGACAGCGC  
GGCTGGTCAGATGGCTGAGGAGCCCCAGACCCCTGCAGAGAATGCCCAAAGCCGAAAAATGACTTTATC  
GAGAGCCTGCCTAATTCGGTAAATGCCGAGTCTGGCCCTCAAAAAGCTGCAGAAGCGATGCGATAAGA  
TAGAAGCCAAATTTGATAAGGAATTTAGGCTCTGGAAAAAAGTATAATGACATCTATAAGCCCTACT  
CGCCAAGATCCAAGAGCTCACCGCGAGATGGAGGGTGTGCATGGACCTTGGAGGGGAGGAGGAGGAG  
GAAGAGGAGTACGAGGATGACGAGGAGGAGGGGAAGACGAGGAGGAGGAGGCTGCGGCAGAGGCTG  
CCGCGGGGCCAAACATGACGATGCCACGCCGAGATGCCTGATGACCCAAGAAG

**ACGCGT**ACGCGGCCGCTCGAGCAGAACTCATCTCAGAAGAGGATCTGGCAGCAATGATATCCTGGATT  
ACAAGGATGACGACGATAAGGTTTAA

Protein Sequence:	>RC211191 protein sequence Red=Cloning site Green=Tags(s)
-------------------	--

MADSENQGAPEPSQAAAAEAAAEVMAEGGAQGGDCDSAAGDPDSAAGQMAEEPQTPAENAPKPKNDFI  
ESLPNSVKRVLALKKLQKRCDKIEAKFDKEFQALEKKYNDIYKPLLAKIQELTGEMEGCAWTLEGEEEE  
EEYEDDEEEGEDEEEEAEEAAAGAKHDDAHAEMPDDAKK

**TR**TRPLEQKLISEEDLAANDILDYKDDDDKV

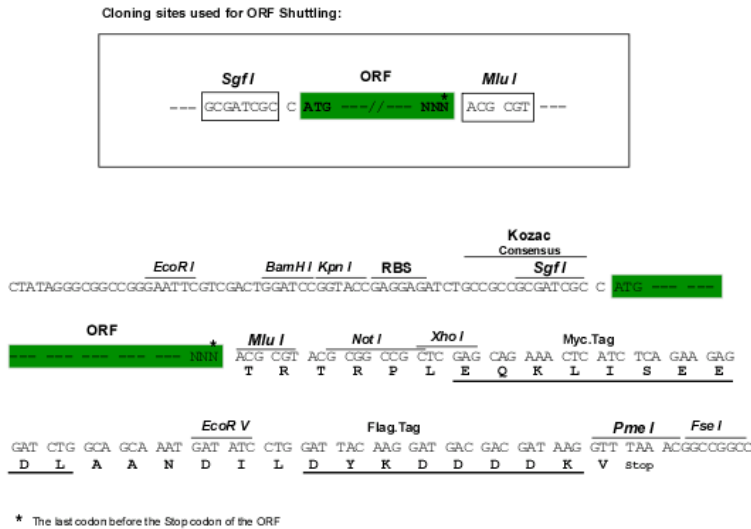
Chromatograms:	<a href="https://cdn.origene.com/chromatograms/mk6373_h07.zip">https://cdn.origene.com/chromatograms/mk6373_h07.zip</a>
----------------	---



[View online »](#)

Restriction Sites: SgfI-MluI

Cloning Scheme:



ACCN: NM\_153757

ORF Size: 546 bp

OTI Disclaimer: The molecular sequence of this clone aligns with the gene accession number as a point of reference only. However, individual transcript sequences of the same gene can differ through naturally occurring variations (e.g. polymorphisms), each with its own valid existence. This clone is substantially in agreement with the reference, but a complete review of all prevailing variants is recommended prior to use. [More info](#)

OTI Annotation: This clone was engineered to express the complete ORF with an expression tag. Expression varies depending on the nature of the gene.

Components: The ORF clone is ion-exchange column purified and shipped in a 2D barcoded Matrix tube containing 10ug of transfection-ready, dried plasmid DNA (reconstitute with 100 ul of water).

Reconstitution Method:

1. Centrifuge at 5,000xg for 5min.
2. Carefully open the tube and add 100ul of sterile water to dissolve the DNA.
3. Close the tube and incubate for 10 minutes at room temperature.
4. Briefly vortex the tube and then do a quick spin (less than 5000xg) to concentrate the liquid at the bottom.
5. Store the suspended plasmid at -20°C. The DNA is stable for at least one year from date of shipping when stored at -20°C.

RefSeq: [NM\\_153757.1](#), [NP\\_715638.1](#)

RefSeq Size: 1965 bp

RefSeq ORF: 549 bp

Locus ID: 266812

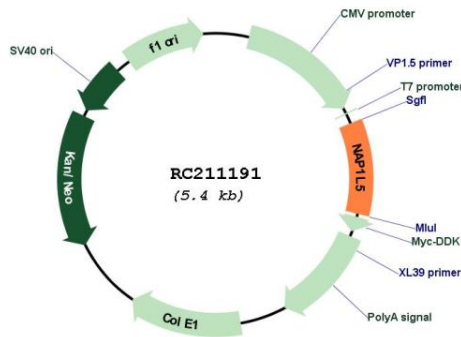
UniProt ID: [Q96NT1](#)

**Cytogenetics:** 4q21-q22

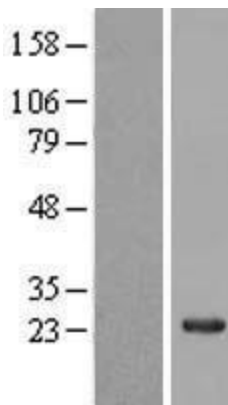
**MW:** 19.6 kDa

**Gene Summary:** This gene encodes a protein that shares sequence similarity to nucleosome assembly factors, but may be localized to the cytoplasm rather than the nucleus. Expression of this gene is downregulated in hepatocellular carcinomas. This gene is located within a differentially methylated region (DMR) and is imprinted and paternally expressed. There is a related pseudogene on chromosome 4. [provided by RefSeq, Nov 2015]

**Product images:**



Circular map for RC211191



Western blot validation of overexpression lysate (Cat# [LY406947]) using anti-DDK antibody (Cat# [TA50011-100]). Left: Cell lysates from untransfected HEK293T cells; Right: Cell lysates from HEK293T cells transfected with RC211191 using transfection reagent MegaTran 2.0 (Cat# [TT210002]).