

Product datasheet for **RC211181**

PDE10A (NM_006661) Human Tagged ORF Clone

Product data:

Product Type:	Expression Plasmids
Product Name:	PDE10A (NM_006661) Human Tagged ORF Clone
Tag:	Myc-DDK
Symbol:	PDE10A
Synonyms:	ADSD2; HSPDE10A; IOLOD; LINC00473; PDE10A19
Mammalian Cell Selection:	Neomycin
Vector:	pCMV6-Entry (PS100001)
E. coli Selection:	Kanamycin (25 ug/mL)



[View online »](#)

ORF Nucleotide
Sequence:

>RC211181 representing NM_006661
 Red=Cloning site Blue=ORF Green=Tags(s)

TTTTGTAATACGACTCACTATAGGGCGGCCGGAATTCGTCGACTGGATCCGGTACCGAGGAGATCTGCC
 GCC**CGATCGCC**

ATGAGGATAGAAGAGAGGAAATCCCAACATTTAACAGTTTGACAGATGAAAAAGTGAAGGCATATCTTT
 CTCTTACCCCCAGGTATTAGATGAATTTGTATCTGAAAGTGTTAGTGCAGAGACAGTAGAGAAATGGCT
 GAAGAGGAAGAACAACAATCAGAAGATGAATCAGCTCCTAAGGAAGTCAGCAGGTACCAAGATACGAAT
 ATGCAGGGAGTTGTATATGAACTAAACAGCTATATAGAACAACGGTTGGACACAGGAGAGACAACCAGC
 TACTCCTCTATGAACTGAGCAGCATCATAAAATAGCCACAAAAGCCGATGGATTGCACTGTATTTCTT
 TGGAGAGTGAATAATAGCCTGTGTATATTCACGCCACCTGGGATAAAGGAAGGAAAACCCCGCCTCATC
 CCTGCTGGGCCCATCACTCAGGGCACCACCGTCTCTGCTTATGTGGCCAAGTCCAGGAAAACACTGCTAG
 TAGAAGACATCCTTGGAGATGAACGATTTCCAAGAGGACTGGACTGGAATCAGGGACTCGTATCCAGTC
 TGTTCTTTGCTTACCAATTGTCAGTCAATTTGGTACTTGATTGGTATTCTCGAGCTGTATCGGCCTGG
 GGCAAAGAAGCCTTCTGTCTTAGTACCAGGAGGTTGCAACAGCAAATCTTGCCTGGGCTTCAGTAGCAA
 TACATCAGGTGCAGGTATGCAGAGGCCCTTGCCAAACAGACAGAATTGAATGACTTCTACTCGACGTATC
 AAAACATATTTTGATAACATAGTTGCAATAGATTCTCTACTTGAACACATAATGATATATGCAAAAAAC
 CTGGTGAATGCCGATCGTTGTGCACTTTCCAGGTGGACCATAAGAACAAGGAGTTATATTCAGACCTTT
 TTGATATTGGAGAGGAAAAGGAAGGAAAACCTGTCTTCAAGAAGACCAAGAGATAAGATTTTCAATTGA
 GAAAGGAATTGCTGGCCAAGTAGCAAGAACAGGGGAAGTCTGAACATCCAGATGCCTATGCAGACCCA
 CGCTTTAACAGAGAAGTAGACTTGTACACAGGCTACACCACGCGGAACATCCTGTGCATGCCATCGTCA
 GCCGAGGCAGCGTGATAGGTGTGGTGCAGATGGTCAACAAAATCAGTGGCAGTGCCTTCTCTAAAACAGA
 TGA AAAACAACCTTCAAAATGTTTGCCGTCTTTTGTGCTTTAGCCTTACACTGTGCTAATATGTATCATA
 ATTCGCCACTCAGAGTGCATTTACCGGGTAACGATGAAAAGCTGTCTACCATAGCATTGTACTTCAG
 AAGAGTGGCAAGGTCTCATGCAATTCACCTTCCCGTGCCTCTGCAAAGAAATTGAATTATTCACCTT
 TGACATTTGGTCTTTGAAAACATGTGGCCTGGAATTTTGTCTACATGGTTCATCGGTCTGTGGGACA
 TCCTGCTTTGAGCTTGAAAAGTTGTGTCGTTTTATTATGTCTGTGAAGAAGAACTATCGGCGGGTTCCTT
 ATCACAACCTGGAAGCATGCGGTCACTGTAGCACACTGCATGTATGCCATACTTCAGAACAATCACACGCT
 TTTCACAGACCTTGAGCGCAAAGGACTGCTGATTGCGTGTCTGTGCATGACCTGGACCACAGGGGCTTC
 AGTAACAGCTACCTGCAGAAGTTCGACCACCTCTGGCCGCTCTACTCCACTTCCACCATGGAGCAGC
 ACCACTTCTCCCAGACTGTGTCCATCCTTCAGTTGGAAGGGCACAAATATCTTCTCCACTCTGAGCTCCAG
 TGAATATGAGCAGGTGCTTGAGATCATCCGCAAAGCCATCATTGCCACAGACCTTGCTTTATACTTTGGA
 AACAGGAAGCAGTTGGAAGAGATGTACCAGACCGGATCACTAAACCTTAATAATCAATCAGATAGAGACC
 GTGTAATTGGTTTGATGATGACTGCCTGTGACCTTTGTTCTGTGACAAAACCTGTGGCCCGTTACAAAATT
 GACGGCAAATGATATATATGCAGAATTCGGGCTGAGGGTGATGAAATGAAGAAATTGGGAATACAGCCT
 ATTCCTATGATGGACAGAGACAAGAAGGATGAAGTCCCCAAGGCCAGCTTGGGTTCTACAATGCCGTGG
 CCATTCCTGCTATAACAACCTTACCCAGATCCTCCCTCCCACGGAGCCTTCTTCAAAGCATGCAGGGA
 TAATCTCAGTCAGTGGGAGAAGGTGATTGAGGGGAGGAGACTGCAACCTGGATTTCATCCCCATCCGTG
 GCTCAGAAGGCAGCTGCATCTGAAGAT

ACGCGTACGCGGCCGCTCGAGCAGAAACTCATCTCAGAAGAGGATCTGGCAGCAAATGATATCCTGGATT
 ACAAGGATGACGACGATAAGGTTTAA

Protein Sequence: >RC211181 representing NM_006661
Red=Cloning site Green=Tags(s)

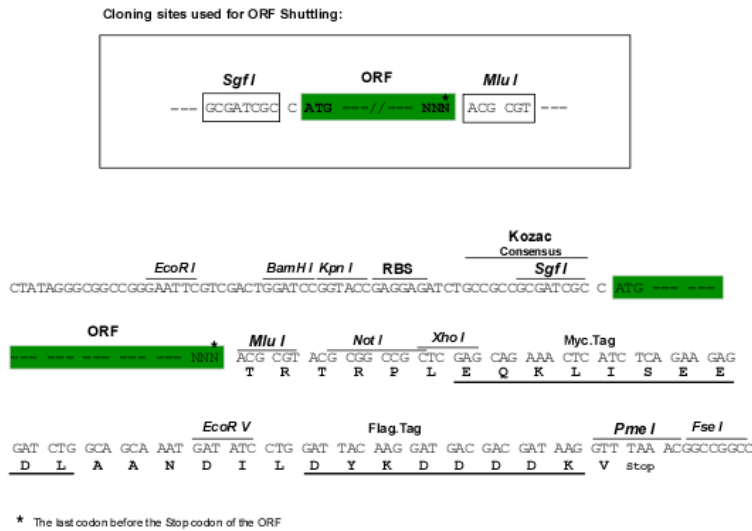
MRIEERKSQHLTGLTDEKVKAYLSLHPQVLDEFVSESVSAETVEKWLKRKNNKSEDESAPKEVSRVYQDTN
MQGVVYELNSYIEQRLDTGGDNQLLLYELSSIIKIATKADGFALYFLGECNNSLCIFTPPGIKEGKPRLI
PAGPITQGTTVSAYVAKSRKTLLEDILGDERFPRGTGLESRTIQSVLCLPIVTAIGDLIGILELYRHW
GKEAFCLSHQEVATANLAWASVAIHQVQVCRGLAKQTELNDFLLDVSKTYFDNIVAIDSLEHIMIYAKN
LVNADRCALFQVDHKNKELYSDLFDIGEEKEGKPVFKKTKAIRFSIEKGIAGQVARTGEVLNIPDAYADP
RFNREVDLYTGYTTRNILCMPIVSRGSVIGVVQMVNKISGSASFSTDENNFKMFVAVFCALALHCANMYHR
IRHSECIYRVTMEKLSYHSICTSEEWQGLMQFTLPVRLCKEIELFHFDIGPFENMWPGIFVYVMVHRSCGT
SCFELEKLCRFIMSVKKNYRRVPYHNWKHAVTVAHCMYAILQNNHTLFTDLERKGLLIACLCHDLDRGF
SNSYLQKFDHPLAALYSTSTMEQHHSQTVSILQLEGHNIFSTLSSSEYEQVLEIRKAIATDLALYFG
NRKQLEEMYQTGSLNLNQSHRDRVIGLMMTACDLCVTKLWPVTKLTANDIYAEFWAEGDEMKKLGIQP
IPMMDRDKKDEVPQQLGFYNAVAIPCYTTLTQILPPTPELLKACRDNLSQWEKVIIRGEETATWISSPSV
AQKAAASED

TRTRPLEQKLISEEDLAANDILDYKDDDDKV

Chromatograms: https://cdn.origene.com/chromatograms/mg2722_b09.zip

Restriction Sites: Sgfl-Mlul

Cloning Scheme:



ACCN: NM_006661

ORF Size: 2337 bp

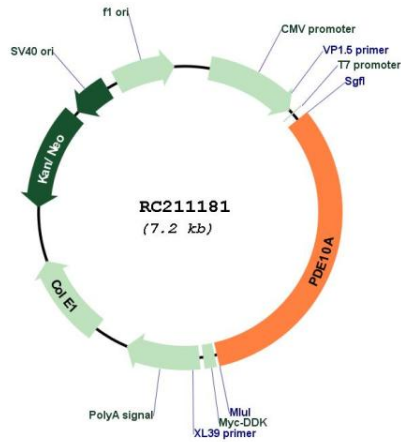
OTI Disclaimer: The molecular sequence of this clone aligns with the gene accession number as a point of reference only. However, individual transcript sequences of the same gene can differ through naturally occurring variations (e.g. polymorphisms), each with its own valid existence. This clone is substantially in agreement with the reference, but a complete review of all prevailing variants is recommended prior to use. [More info](#)

OTI Annotation: This clone was engineered to express the complete ORF with an expression tag. Expression varies depending on the nature of the gene.

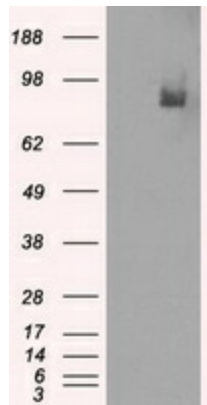
Components: The ORF clone is ion-exchange column purified and shipped in a 2D barcoded Matrix tube containing 10ug of transfection-ready, dried plasmid DNA (reconstitute with 100 ul of water).

Reconstitution Method:	<ol style="list-style-type: none">1. Centrifuge at 5,000xg for 5min.2. Carefully open the tube and add 100ul of sterile water to dissolve the DNA.3. Close the tube and incubate for 10 minutes at room temperature.4. Briefly vortex the tube and then do a quick spin (less than 5000xg) to concentrate the liquid at the bottom.5. Store the suspended plasmid at -20°C. The DNA is stable for at least one year from date of shipping when stored at -20°C.
Note:	Plasmids are not sterile. For experiments where strict sterility is required, filtration with 0.22um filter is required.
RefSeq:	NM_006661.4
RefSeq Size:	4576 bp
RefSeq ORF:	2340 bp
Locus ID:	10846
UniProt ID:	Q9Y233
Cytogenetics:	6q27
Domains:	PDEase, GAF
Protein Families:	Druggable Genome
Protein Pathways:	Progesterone-mediated oocyte maturation, Purine metabolism
MW:	88.2 kDa
Gene Summary:	<p>The protein encoded by this gene belongs to the cyclic nucleotide phosphodiesterase family. It plays a role in signal transduction by regulating the intracellular concentration of cyclic nucleotides. This protein can hydrolyze both cAMP and cGMP to the corresponding nucleoside 5' monophosphate, but has higher affinity for cAMP, and is more efficient with cAMP as substrate. Alternatively spliced transcript variants have been described for this gene. [provided by RefSeq, Dec 2011]</p>

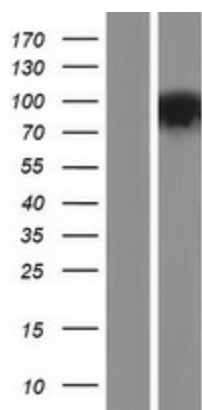
Product images:



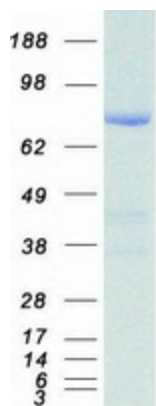
Circular map for RC211181



HEK293T cells were transfected with the pCMV6-ENTRY control (Cat# [PS100001], Lane 1), human PDE10A transcript variant 2 (Cat# RC211181, Lane 2), human PDE10A transcript variant 1 (Cat# [RC226169], Lane 3), and mouse PDE10A (Cat# [MR225520], Lane 4) cDNA clones for 48 hrs and lysed. Equivalent amounts of cell lysates (5 ug per lane) were separated by SDS-PAGE and immunoblotted with anti-PDE10A (Cat# [TA500625]).



Western blot validation of overexpression lysate (Cat# [LY416496]) using anti-DDK antibody (Cat# [TA50011-100]). Left: Cell lysates from untransfected HEK293T cells; Right: Cell lysates from HEK293T cells transfected with RC211181 using transfection reagent MegaTran 2.0 (Cat# [TT210002]).



Coomassie blue staining of purified PDE10A protein (Cat# [TP311181]). The protein was produced from HEK293T cells transfected with PDE10A cDNA clone (Cat# RC211181) using MegaTran 2.0 (Cat# [TT210002]).