

Product datasheet for **RC211175**

TUBA8 (NM_018943) Human Tagged ORF Clone

Product data:

Product Type:	Expression Plasmids
Product Name:	TUBA8 (NM_018943) Human Tagged ORF Clone
Tag:	Myc-DDK
Symbol:	TUBA8
Synonyms:	CDCBM8; TUBAL2
Mammalian Cell Selection:	Neomycin
Vector:	pCMV6-Entry (PS100001)
E. coli Selection:	Kanamycin (25 ug/mL)



[View online »](#)

ORF Nucleotide Sequence:

>RC211175 ORF sequence
 Red=Cloning site Blue=ORF Green=Tags(s)

TTTTGTAATACGACTCACTATAGGGCGGCCGGGAATTCGTCGACTGGATCCGGTACCGAGGAGATCTGCC
 GCCGCGATCGCC

ATCGGGGAATGCATATCAGTCCACGTGGGCCAAGCGGGAGTTGAGATTGGCAATGCCTGCTGGGAGCTCT
 TCTGCCTGGAACACGGCATCCAGGCAGACGGCACTTTTGTGCTCAAGCTAGCAAGATCAACGATGATGA
 CTCTTACCACCTTTTTCAGCGAGACTGGCAATGGGAAGCATGTGCCCCGGGCCGTCATGATAGATCTG
 GAGCCTACTGTAGTGGATGAGGTTGGGCGAGAACCTACCGCCAGCTCTCCATCCAGAGCAGCTGATCA
 CAGGAAAGGAGGATGCAGCCAACAATATGCCCGGGGCCACTACACGGTGGGCAAGGAGAGCATTGACCT
 GGTGCTGGACGCATACGGAAGCTGACAGATGCTTGTCTGGCCTGCAGGGCTTCTGATTTTCCACAGT
 TTTGGTGGGGGCACTGGCTCCGGCTTCACTTCTCTGCTGATGGAACGCCTCTCCCTGGATTATGGCAAGA
 AATCCAAGCTGGAGTTTCCATCTACCCAGCCCCCAGGTCTCTACTGCAGTGGTGAGCCCTACAACCT
 CATCTGACCACCACACCACACTGGAACATTCAGATTGCTTTCATGGTGGACAACGAAGCCATCTAT
 GACATCTGCCGAGGAACCTTGACATTGAGCGCCCTACCTATACCAACCTCAACCGCCTCATCAGTCAGA
 TTGTGTCCTCAATCACTGCTTCTCTCCGCTTTGACGGGGCCCTCAATGTGGACCTCACTGAGTTCAGAC
 CAACCTGGTGCCCTACCCCCGCATCCACTTCCCCTGGTACCTACGCGCCCATCATCTCTGCCGAGAAA
 GCCTATACGAACAGCTCTCTGTGGCCGAGATAACCAGCTCCTGCTTTGAGCCCAACAGCCAGATGGTGA
 AGTGCGACCCGAGACATGGCAAGTACATGGCCTGCTGCATGCTCTACCGGGGCGACGTGGTGCCCAAGGA
 TGTGAATGTCGCTATTGCTGCCATCAAGACCAAGAGGACCATCCAGTTTGTAGACTGGTGTCCCACAGGC
 TTCAAGGTGGGCATCACTACCAGCCCCGACCGTGGTCCCCGGGGGAGACCTGGCCAAGGTGCAGCGGG
 CCGTCTGCATGCTCAGCAACACCACGGCCATTGCGGAGGCTGGGCCCGCCTCGACCACAAGTTCGACCT
 CATGTACGCCAAGCGGGCCTTTGTGATTGGTATGTTGGGAGAGGGGATGGAAGAAGGAGAATTTTCTGAG
 GCCAGGGAAGACTTAGCTGCCCTGGAGAAGGATTATGAAGAAGTGGGACTGATTCTTTGAAGAAGAAA
 ATGAAGGGGAGGAATTT

ACGCGTACGCGGCCGCTCGAGCAGAACTCATCTCAGAAGAGGATCTGGCAGCAATGATATCCTGGATT
 ACAAGGATGACGACGATAAGGTTTAA

Protein Sequence:

>RC211175 protein sequence
 Red=Cloning site Green=Tags(s)

MRECISVHVQAGVQIGNACWELFCLEHGIQADGTFDAQASKINDDDSFTTFFSETGNGKHVPRAYMIDL
 EPTVVDEVVAGTYRQLFHPEQLITGKEDAANNYARGHYTVGKESIDLVLDRIRKLTACSGLQGFIFHS
 FGGGTGSGFTSLLMERLSLDYGGKSKLEFAIYPAPQVSTAVVEPYNSILTTHTTLEHSDCAFMDNEAIY
 DICRRNLDIERPTYTNLNLISQIVSSITASLRFDGALNVDLTFQTNLVPYPRIHPLVTYAPIISAEK
 AYHEQLSVAEITSSCFEPNSQMVKCDPRHGKYMCCMLYRGDVVPKDVNVAIAAIKTKRTIQFVDWCPTG
 FKVGINYQPPTVVPGGDLAKVQRAVCMLSNNTAIAEAWARLDHKFDLMYAKRAFHVHVVYVGEEMEEGEFSE
 AREDLAALKDYEEVGTDSFEEENEGEF

TRTRPLEQKLISEEDLAANDILDYKDDDDKV

Chromatograms:

https://cdn.origene.com/chromatograms/mk6372_g11.zip

Restriction Sites:

Sgfl-Mlul

Cloning Scheme:


ACCN: NM_018943

ORF Size: 1347 bp

OTI Disclaimer: The molecular sequence of this clone aligns with the gene accession number as a point of reference only. However, individual transcript sequences of the same gene can differ through naturally occurring variations (e.g. polymorphisms), each with its own valid existence. This clone is substantially in agreement with the reference, but a complete review of all prevailing variants is recommended prior to use. [More info](#)

OTI Annotation: This clone was engineered to express the complete ORF with an expression tag. Expression varies depending on the nature of the gene.

Components: The ORF clone is ion-exchange column purified and shipped in a 2D barcoded Matrix tube containing 10ug of transfection-ready, dried plasmid DNA (reconstitute with 100 ul of water).

- Reconstitution Method:**
1. Centrifuge at 5,000xg for 5min.
 2. Carefully open the tube and add 100ul of sterile water to dissolve the DNA.
 3. Close the tube and incubate for 10 minutes at room temperature.
 4. Briefly vortex the tube and then do a quick spin (less than 5000xg) to concentrate the liquid at the bottom.
 5. Store the suspended plasmid at -20°C. The DNA is stable for at least one year from date of shipping when stored at -20°C.

RefSeq: [NM_018943.3](#)

RefSeq Size: 2124 bp

RefSeq ORF: 1350 bp

Locus ID: 51807

UniProt ID: [Q9NY65](#)

Cytogenetics: 22q11.21

Domains: tubulin

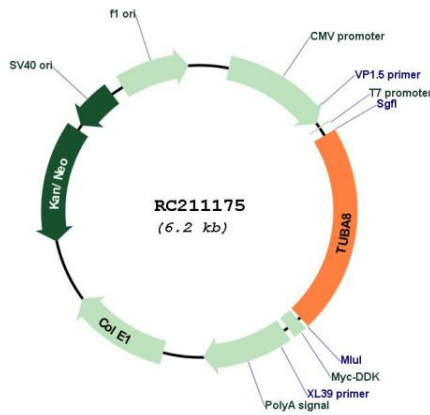
Protein Families: Druggable Genome

Protein Pathways: Gap junction, Pathogenic Escherichia coli infection

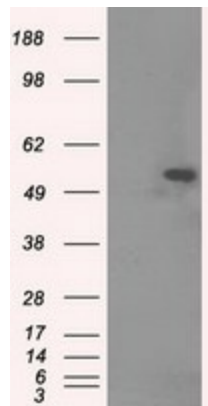
MW: 50.1 kDa

Gene Summary: This gene encodes a member of the alpha tubulin protein family. Alpha tubulins are one of two core protein families (alpha and beta tubulins) that heterodimerize and assemble to form microtubules. Mutations in this gene are associated with polymicrogyria and optic nerve hypoplasia. Alternate splicing results in multiple transcript variants. [provided by RefSeq, Jul 2010]

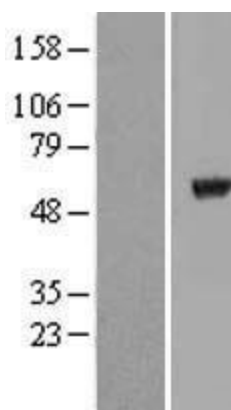
Product images:



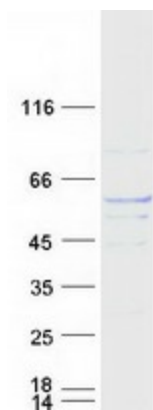
Circular map for RC211175



HEK293T cells were transfected with the pCMV6-ENTRY control (Cat# [PS100001], Left lane) or pCMV6-ENTRY TUBA8 (Cat# RC211175, Right lane) cDNA for 48 hrs and lysed. Equivalent amounts of cell lysates (5 ug per lane) were separated by SDS-PAGE and immunoblotted with anti-TUBA8 (Cat# [TA501096]). Positive lysates [LY412867] (100ug) and [LC412867] (20ug) can be purchased separately from OriGene.



Western blot validation of overexpression lysate (Cat# [LY412867]) using anti-DDK antibody (Cat# [TA50011-100]). Left: Cell lysates from untransfected HEK293T cells; Right: Cell lysates from HEK293T cells transfected with RC211175 using transfection reagent MegaTran 2.0 (Cat# [TT210002]).



Coomassie blue staining of purified TUBA8 protein (Cat# [TP311175]). The protein was produced from HEK293T cells transfected with TUBA8 cDNA clone (Cat# RC211175) using MegaTran 2.0 (Cat# [TT210002]).