

Product datasheet for **RC211170**

SNTG1 (NM_018967) Human Tagged ORF Clone

Product data:

Product Type:	Expression Plasmids
Product Name:	SNTG1 (NM_018967) Human Tagged ORF Clone
Tag:	Myc-DDK
Symbol:	SNTG1
Synonyms:	G1SYN; SYN4
Mammalian Cell Selection:	Neomycin
Vector:	pCMV6-Entry (PS100001)
E. coli Selection:	Kanamycin (25 ug/mL)



[View online »](#)

ORF Nucleotide Sequence:

>RC211170 ORF sequence
 Red=Cloning site Blue=ORF Green=Tags(s)

TTTTGTAATACGACTCACTATAGGGCGGCCGGGAATTCGTCGACTGGATCCGGTACCGAGGAGATCTGCC
 GCC**CGGATCGCC**

ATGGATTT**CAGA**ACCGCCTGTGAGGAGACA**AAAGACAGGA**ATTTGTTT**GCTGCAGGATGGTAA**CCAGGAGC
 CTTTCAAAGT**GCGCTGCACCTAGCCAAAGAC**ATTTT**GATGATCCAGGAACAGGATGTGATATGTGTGTC**
 TGGT**GAGCCTTTCTATTCTGGT**GAAAGAACGGT**GACCATCAGAAGACAAACAGTAGGAGGATTTGGATTA**
 AGCATA**AAAGGGAGGAGCAGAACA**TAA**CATTCCAGTTGTCGTTTCAAAA**ATCTCCAAGGA**CAAAAGAGCGG**
 AACTTT**CAGGACTACTTTTTATTGGAGATGCA**ATTCTACAGATA**AAATGGCATTAA**TGTGAGAAA**ATGTAG**
 ACATGAAGAA**GTGGTTCAGGTTCTTCGGAATGCTGGAGAAGA**AGT**GACTTAACAGTGTCA**TTTTT**AAAA**
 AGAGCACCT**GCTTCTCCTCAA**ACT**CCCATTGAATGAAGATTGTGCATGTGCTCCAAGT**GACCAGAGCAGT**G**
 GCACCTCCTC**TCTCTGTGACAGTGGCTTACATCTCAACT**ACCAT**CCCAACA**ATACAGACACATT**ATC**
 ATGCTCGT**CGTGGCCGACGTCTCCAGGCTTGAGGTGGGAGAAGCGATGGT**GCGACCTCAGACTGAT**CCCT**
 CTACTT**CATTTCGCGCTTCTCTCAGTATGTGCCCGCACAGATTTGAGT**CGGCAGAA**TGCCTTTCAAGTCA**
 TTGCTGTGGATGGGGT**CTGCACTGGGATTATTCAGTGCCTCTCTGCTGAAGACTGCGTTGACTGGCTACA**
 AGCAATAGCA**ACTAACATTTCAA**ATCTC**ACAAAGCACA**ATAT**AAAAAA**CAACAGAA**ACTTTCTCTGTA**
 AACCAGCAGAT**GTCTACATGGGCTGGTGTGAAGCCCGGAGCAAGACCCCTCCAGGACAGAGT**ACT
 C**CCCGAC**TTCT**CTGGCCCTGAGGGGCTCATGTCTCTACAAGTTTCTGGCACCTCCAGT**GACCAC**CTGGGA**
 CTGGACAAGAGCAGAGAAA**CAATTTCTCAGTTTATGAGATTATGTGCAAGATCCTCAAGGACAGT**GAC**CTG**
 CTGGACCGACGGAA**ACAGTGTTCACCGTGCAGTCTGAGTCTGGGAGGACCTGTACTTCTCAGTGGAGC**
 TGGAAAGT**GACCTCGCC**AGTGGGAAAG**GCCTCCAGACAGCAACCTTTCTAGAAGT**AGAACGGAT**ATA**
 GTGCAAGAC**CTATGCATGTGTGCTAGAAA**GT**CATCTAATGGGACTCACA**ATTGATTT**CAGCACAGGATTT**
 ATCTGCTTT**GATGCTGCAACAAAGGCTGTCTTTGGAGGTATAA**ATTCTCTCAGCTTAAAG**TTCTTCAG**
 ATGATGGCAAGAGCAA**AAATCAA**ATTTTT**GTTTCAGAATCCAGATACTAAACAGATTGAAGCAAAGGAGTT**
 GGAATTTT**CTAATTTATTTGCTGTTCTTCACTGCATTCA**TTCTTT**GCTGCCAAGGTAGCTTGT**TTG
 GAC**CTCTATTTTAGGCAATCAAGCTACTGCTTCTACTGCTGCCAGCTCTGCTACCACGAGCAAAGCAA**
 AGTATACA**ACT**

ACGCGTACGCGGCGCTCGAGCAGAA**ACTCATCTCAGAAGAGGATCTGGCAGCAAATGATATCCTGGATT**
 ACAAGGATGACGACGATAAG**GTTTAA**

Protein Sequence:

>RC211170 protein sequence
 Red=Cloning site Green=Tags(s)

MDFR**TACEETKTGICLLQDGNQEPFKVRLHLAKDILMIQEQDVICVSGEPFYS**GERTVT**IRRQT**VG**GFGL**
 SIKGGA**EHNI**PPVV**SKISKEQRAEL**SGL**FIGDAILQINGINVRKCRHEEVVQVLRNAGEE**VTL**TVSFLK**
 R**APAF**LK**PLNEDCACAPSDQSSGTSSPLCDSGLH**LN**YHPNNTDLSCSSWPTSPGLRWEKR**WCDL**R**L**IP**
 LL**HSRFSQYVPGDL**SR**QNAFQVIAVDGVCTGIIQCL**SAED**VDWLQAIATNISNLTKHNIK**IN**R**FPV
 N**QQIVYMGWCEAREQDPLQDRVYSPTFLALRGSCLYKFLAPPVTTWDW**TRAE**KTF**SV**YEIMCKILK**DSD**L**
 LDRR**KQCF**TV**QSESGEDLYF**S**VELES**DLA**QWERAFQ**TAT**FLEVERIQCKTYACV**LE**SHLMGLTIDF**ST**GF**
 ICFDAAT**KAVLWRYKFSQLKGSSDDGKSKIKFLFQNPDTKQIEAKE**LE**FSNLF**AVL**HCIHSFFAAK**VACL
 DPL**FLGNQ**ATA**STAASSATTSKAKYTT**

TRTRPLEQKLISEED**LAANDILDYKDDDDKV**

Chromatograms:

https://cdn.origene.com/chromatograms/mk6372_b05.zip

Restriction Sites:

Sgfl-MluI

Cloning Scheme:


ACCN: NM_018967

ORF Size: 1551 bp

OTI Disclaimer: The molecular sequence of this clone aligns with the gene accession number as a point of reference only. However, individual transcript sequences of the same gene can differ through naturally occurring variations (e.g. polymorphisms), each with its own valid existence. This clone is substantially in agreement with the reference, but a complete review of all prevailing variants is recommended prior to use. [More info](#)

OTI Annotation: This clone was engineered to express the complete ORF with an expression tag. Expression varies depending on the nature of the gene.

Components: The ORF clone is ion-exchange column purified and shipped in a 2D barcoded Matrix tube containing 10ug of transfection-ready, dried plasmid DNA (reconstitute with 100 ul of water).

- Reconstitution Method:**
1. Centrifuge at 5,000xg for 5min.
 2. Carefully open the tube and add 100ul of sterile water to dissolve the DNA.
 3. Close the tube and incubate for 10 minutes at room temperature.
 4. Briefly vortex the tube and then do a quick spin (less than 5000xg) to concentrate the liquid at the bottom.
 5. Store the suspended plasmid at -20°C. The DNA is stable for at least one year from date of shipping when stored at -20°C.

RefSeq: [NM_018967.1](#), [NP_061840.1](#)

RefSeq Size: 3398 bp

RefSeq ORF: 1554 bp

Locus ID: 54212

UniProt ID: [Q9NSN8](#)

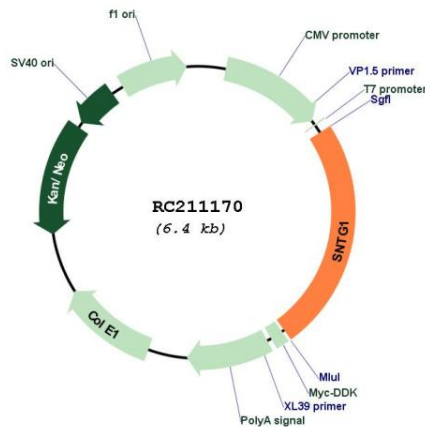
Cytogenetics: 8q11.21

Domains: PDZ, PH

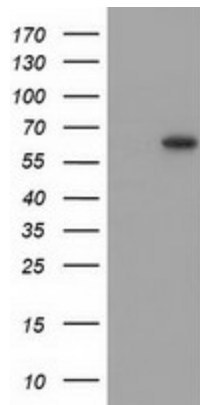
MW: 58 kDa

Gene Summary: The protein encoded by this gene is a member of the syntrophin family. Syntrophins are cytoplasmic peripheral membrane proteins that typically contain 2 pleckstrin homology (PH) domains, a PDZ domain that bisects the first PH domain, and a C-terminal domain that mediates dystrophin binding. This family member plays a role in mediating gamma-enolase trafficking to the plasma membrane and in enhancing its neurotrophic activity. Mutations in this gene are associated with idiopathic scoliosis. Alternatively spliced transcript variants have been found for this gene. [provided by RefSeq, Mar 2016]

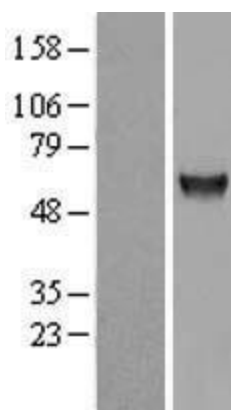
Product images:



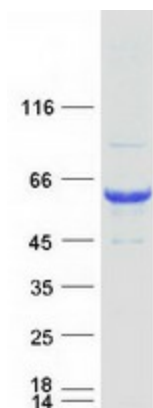
Circular map for RC211170



HEK293T cells were transfected with the pCMV6-ENTRY control (Cat# [PS100001], Left lane) or pCMV6-ENTRY SNTG1 (Cat# RC211170, Right lane) cDNA for 48 hrs and lysed. Equivalent amounts of cell lysates (5 ug per lane) were separated by SDS-PAGE and immunoblotted with anti-SNTG1(Cat# [TA502224]). Positive lysates [LY412854] (100ug) and [LC412854] (20ug) can be purchased separately from OriGene.



Western blot validation of overexpression lysate (Cat# [LY412854]) using anti-DDK antibody (Cat# [TA50011-100]). Left: Cell lysates from untransfected HEK293T cells; Right: Cell lysates from HEK293T cells transfected with RC211170 using transfection reagent MegaTran 2.0 (Cat# [TT210002]).



Coomassie blue staining of purified SNTG1 protein (Cat# [TP311170]). The protein was produced from HEK293T cells transfected with SNTG1 cDNA clone (Cat# RC211170) using MegaTran 2.0 (Cat# [TT210002]).