

## Product datasheet for RC211169

### Interferon alpha 8 (IFNA8) (NM\_002170) Human Tagged ORF Clone

#### Product data:

**Product Type:** Expression Plasmids  
**Product Name:** Interferon alpha 8 (IFNA8) (NM\_002170) Human Tagged ORF Clone  
**Tag:** Myc-DDK  
**Symbol:** Interferon alpha 8  
**Synonyms:** IFN-alphaB  
**Mammalian Cell Selection:** Neomycin  
**Vector:** pCMV6-Entry (PS100001)  
**E. coli Selection:** Kanamycin (25 ug/mL)  
**ORF Nucleotide Sequence:** >RC211169 ORF sequence  
Red=Cloning site Blue=ORF Green=Tags(s)

TTTTGTAATACGACTCACTATAGGGCGGCCGGAATTCGTCGACTGGATCCGGTACCGAGGAGATCTGCC  
GCC**CGATCGCC**

ATGGCCTTGACTTTTTATTTACTGGTGGCCCTAGTGGTGCTCAGCTACAAGTCATTCAGCTCTCTGGGCT  
GTGATCTGCCTCAGACTCACAGCCTGGGTAAACAGGAGGGCCTTGATACTCCTGGCACAAATGCGAAGAAT  
CTCTCCTTTCTCCTGCCTGAAGGACAGACATGACTTTGAATCCCCCAGGAGGAGTTTGATGATAAACAG  
TTCCAGAAGGCTCAAGCCATCTCTGTCTCCATGAGATGATCCAGCAGACCTTCAACCTCTTCAGCACAA  
AGGACTCATCTGTGCTTTGGATGAGACCCTTCTAGATGAATTCTACATCGAACTTGACCAGCAGCTGAA  
TGACCTGGAGTCTGTGTGATGCAGGAAGTGGGGTGATAGAGTCTCCCTGATGTACGAGGACTCCATC  
CTGGCTGTGAGGAAATACTTCAAAGAATCACTCTATATCTGACAGAGAAGAAATACAGCTCTTGTGCCT  
GGGAGGTTGTGAGCAGAAATCATGAGATCCTTCTTTATCAATCAACTTGCAAAAAAGATTGAAGAG  
TAAGGAA

**ACGCGT**ACGCGGCCGCTCGAGCAGAACTCATCTCAGAAGAGGATCTGGCAGCAATGATATCCTGGATT  
ACAAGGATGACGACGATAAGGTTTAA

**Protein Sequence:** >RC211169 protein sequence  
Red=Cloning site Green=Tags(s)

MALTFYLLVALVLSYKSFSSLGCDLPQTHSLGNRRALILLAQMRRISPFSCLKDRHDFEFPQEEFDDKQ  
FQKAQAISVLHEMIQQTFNLFSTKDSSAALDETLDEFYIELDQQLNDLESCVMQEVGVIESPLMYEDSI  
LAVRKYFQRITLYLTEKKYSSCAWEVRAEIMRSFSLINLQKRLKSKE

**TRTRPLEQKLI**SEEDLAANDILDYKDDDDKV



[View online »](#)

**Chromatograms:** [https://cdn.origene.com/chromatograms/mk6372\\_d09.zip](https://cdn.origene.com/chromatograms/mk6372_d09.zip)

**Restriction Sites:** SgfI-MluI

**Cloning Scheme:**



**ACCN:** NM\_002170

**ORF Size:** 567 bp

**OTI Disclaimer:** The molecular sequence of this clone aligns with the gene accession number as a point of reference only. However, individual transcript sequences of the same gene can differ through naturally occurring variations (e.g. polymorphisms), each with its own valid existence. This clone is substantially in agreement with the reference, but a complete review of all prevailing variants is recommended prior to use. [More info](#)

**OTI Annotation:** This clone was engineered to express the complete ORF with an expression tag. Expression varies depending on the nature of the gene.

**Components:** The ORF clone is ion-exchange column purified and shipped in a 2D barcoded Matrix tube containing 10ug of transfection-ready, dried plasmid DNA (reconstitute with 100 ul of water).

**Reconstitution Method:**

1. Centrifuge at 5,000xg for 5min.
2. Carefully open the tube and add 100ul of sterile water to dissolve the DNA.
3. Close the tube and incubate for 10 minutes at room temperature.
4. Briefly vortex the tube and then do a quick spin (less than 5000xg) to concentrate the liquid at the bottom.
5. Store the suspended plasmid at -20°C. The DNA is stable for at least one year from date of shipping when stored at -20°C.

**RefSeq:** [NM\\_002170.4](#)

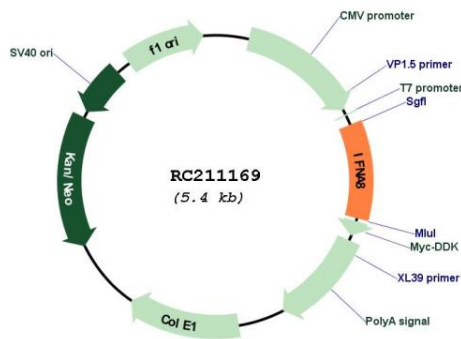
**RefSeq Size:** 1039 bp

**RefSeq ORF:** 570 bp

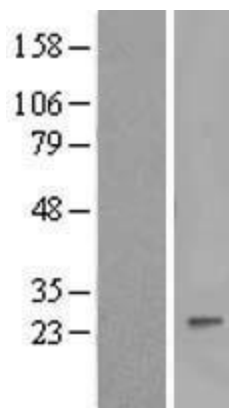
**Locus ID:** 3445

**UniProt ID:** [P32881](#)  
**Cytogenetics:** 9p21.3  
**Protein Families:** Druggable Genome, Secreted Protein  
**Protein Pathways:** Antigen processing and presentation, Autoimmune thyroid disease, Cytokine-cytokine receptor interaction, Cytosolic DNA-sensing pathway, Jak-STAT signaling pathway, Natural killer cell mediated cytotoxicity, Regulation of autophagy, RIG-I-like receptor signaling pathway, Toll-like receptor signaling pathway  
**MW:** 22 kDa  
**Gene Summary:** Produced by macrophages, IFN-alpha have antiviral activities. Interferon stimulates the production of two enzymes: a protein kinase and an oligoadenylate synthetase. [UniProtKB/Swiss-Prot Function]

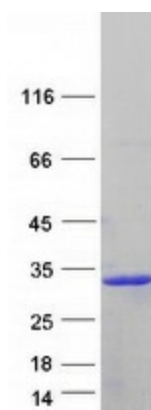
### Product images:



Circular map for RC211169



Western blot validation of overexpression lysate (Cat# [LY419487]) using anti-DDK antibody (Cat# [TA50011-100]). Left: Cell lysates from untransfected HEK293T cells; Right: Cell lysates from HEK293T cells transfected with RC211169 using transfection reagent MegaTran 2.0 (Cat# [TT210002]).



Coomassie blue staining of purified IFNA8 protein (Cat# [TP311169]). The protein was produced from HEK293T cells transfected with IFNA8 cDNA clone (Cat# RC211169) using MegaTran 2.0 (Cat# [TT210002]).