

Product datasheet for **RC211158**

EHD1 (NM_006795) Human Tagged ORF Clone

Product data:

Product Type:	Expression Plasmids
Product Name:	EHD1 (NM_006795) Human Tagged ORF Clone
Tag:	Myc-DDK
Symbol:	EHD1
Synonyms:	H-PAST; HPAST1; PAST; PAST1
Mammalian Cell Selection:	Neomycin
Vector:	pCMV6-Entry (PS100001)
E. coli Selection:	Kanamycin (25 ug/mL)



[View online »](#)

ORF Nucleotide Sequence:

>RC211158 ORF sequence
 Red=Cloning site Blue=ORF Green=Tags(s)

TTTTGTAATACGACTCACTATAGGGCGGCCGGAATTCGTCGACTGGATCCGGTACCGAGGAGATCTGCC
 GCC**CGGATCGCC**

ATGTTTCAGCTGGGTCAGCAAGGATGCCCGCCGAAGAAGGAGCCGGAGCTCTCCAGACGGTGGCCGAGG
 GGCTGCGGCAGCTGTACGCGCAGAAGCTGCTACCCTGGAGGAGCACTACCGCTTCCACGAGTTCCACTC
 GCCCGCGCTGGAGGACGCTGACTTCGACAACAAGCCTATGGTGTCTCTCGTGGGGCAGTACAGCACGGGC
 AAGACCACCTTTCATCCGACACCTGATCGAGCAGGACTTCCCGGGGATGCGCATCGGGCCCCAGCCACCA
 CCGACTCTTTCATCGCCGTATGCACGGCCCCACTGAGGGCGTGGTCCCGGGCAACGCGCTCGTGGTGA
 CCCGCGGCCCCCTTCCGCAAGCTCAACCGCTTGGCAACGCTTCTCAACAGGTTTCATGTGTGCCAG
 CTGCCAACCCCGTCTGGACAGCATCAGCATCATCGACACCCCGGGATCCTGTCTGGAGAGAAGCAGC
 GGATCAGCAGAGGCTATGACTTTCAGCCGCTCTGGAGTGGTTCGCGGAGCGTGTGGACCGCATCATCT
 GCTCTTCGACGCCACAAGCTGGACATCTCCGATGAGTCTCGGAAGTGATCAAGGCTCTGAAGAACCAT
 GAGGACAAGATCCGCGTGGTGTGAACAAGGCAGACCAGATCGAGACGCAGCAGCTGATCGGGGTGTACG
 GGGCCCTCATGTGGTCCCTGGGCAAGATCATCAACACCCCGAGGTGGTCAAGGCTACATCGGGTCCCT
 CTGGTCCCACCCGCTCCTCATCCCCGACAACCGCAAGCTCTTGGAGCCGAGGAGCAGGACCTCTTCAAG
 GACATCCAGTCACTGCCCGAAACGCCGCCCTCAGGAAGCTCAATGACCTGATCAAGCGGCACGGCTGG
 CCAAGGTTACGCCTACATCATCAGTCCCTCAAGAAAGAGATGCCCAATGTCTTTGGTAAAGAGAGCAA
 AAAGAAAGAGCTGGTGAACAACCTGGGAGAGATCTACCAGAAGATTGAGCGCGAGCACCAGATCTCCCT
 GGGGACTTCCCGAGCCTCCGCAAGATGCAGGAACCTCTGCAGACCCAGGACTTCAGCAAGTTCAGGCGC
 TGAAGCCCAAGCTGCTGGACACGGTGGATGACATGCTGGCCAACGACATCGCGCGGCTGATGGTGTGGT
 CGGGCAGGAGGATCCCTGATGCCTTCCAGGTGGTCAAGGGCGGCGCCTTTGACGGCACCATGAACGGG
 CCGTTCGGGCACGGCTACGGCGAGGGGGCCGGCAGGGCATCGACGACGTGGAGTGGTGGTGGGAAGG
 ACAAGCCACCTACGACGAGATCTTCTACACGCTGTCCCCTGTCAACGGCAAGATCACGGGCGCCAAACGC
 CAAGAAGGAGATGGTGAAGTCCAAGCTCCCAACACCGTCTAGGGAAGATCTGGAAGCTGGCCGACGTG
 GACAAGGACGGGCTGCTGGACGACGAGGAGTTCGCGCTGGCCAACCACCTCATCAAGGTCAAGCTGGAGG
 GCCACGAGCTGCCCGCCGACCTGCCCCGACCTGGTCCCGCCCTCAAGCGCAGACATGAG

AG**CGGACCG**ACGCGTACGCGGCCGCTCGAGCAGAACTCATCTCAGAAGAGGATCTGGCAGCAAATGATATCC
 TGGATTACAAGGATGACGACGATAAGGTTTAA

Protein Sequence:

>RC211158 protein sequence
 Red=Cloning site Green=Tags(s)

MFSWVSKDARRKKEPELFTVAEGLRQLYAQKLLPLEEHYRFHEFHSPALEDADFDNKPMLLVGQYSTG
 KTTFFIRHLIEQDFPGRIGPEPTTDSFIIVMHGPTTEGVVPGNALVVDPRRPFRLNFAFGNAFLNRFMCAQ
 LPNPVLDISISIIDTPGILSGEKQRISRGYDFAAVLEWFAERVDRIILLFDAHKLDISDEFSEVIKALKNH
 EDKIRVVLNKADQIETQQLMRVYGALMWSLGGKIINTPEVVRVYIGSFWSHPLLIPDNRKLFEEEQDLFK
 DIQSLPRNAALRKLNDLIKRRARLAKVHAYIISLKKEMPVVFGEKSKKELVNNLGEIYQKIEREHQISP
 GDFPSLRKMQELLQTQDFSKFQALKPKLLDVTDDMLANDIARLMVMVRQEESLMPSQVVKGGAFDGTMMG
 PFGHGYGEGAGEGIDDVEWVVGKDKPTYDEIFYTLSPVNGKITGANAKKEMVSKLPNTVLGKIWKLADV
 DKDGLLDDEEFALANHLIKVKLEGHELPAADLPPHLPVPSKRRHE

SGPTRTRPLEQKLISEEDLAANDILDYKDDDDKV

Chromatograms:

https://cdn.origene.com/chromatograms/mk6621_a05.zip

Restriction Sites:

Sgfl-RsrII

Cloning Scheme:


ACCN: NM_006795

ORF Size: 1602 bp

OTI Disclaimer: Due to the inherent nature of this plasmid, standard methods to replicate additional amounts of DNA in E. coli are highly likely to result in mutations and/or rearrangements. Therefore, OriGene does not guarantee the capability to replicate this plasmid DNA. Additional amounts of DNA can be purchased from OriGene with batch-specific, full-sequence verification at a reduced cost. Please contact our customer care team at custsupport@origene.com or by calling 301.340.3188 option 3 for pricing and delivery.

The molecular sequence of this clone aligns with the gene accession number as a point of reference only. However, individual transcript sequences of the same gene can differ through naturally occurring variations (e.g. polymorphisms), each with its own valid existence. This clone is substantially in agreement with the reference, but a complete review of all prevailing variants is recommended prior to use. [More info](#)

OTI Annotation: This clone was engineered to express the complete ORF with an expression tag. Expression varies depending on the nature of the gene.

Components: The ORF clone is ion-exchange column purified and shipped in a 2D barcoded Matrix tube containing 10ug of transfection-ready, dried plasmid DNA (reconstitute with 100 ul of water).

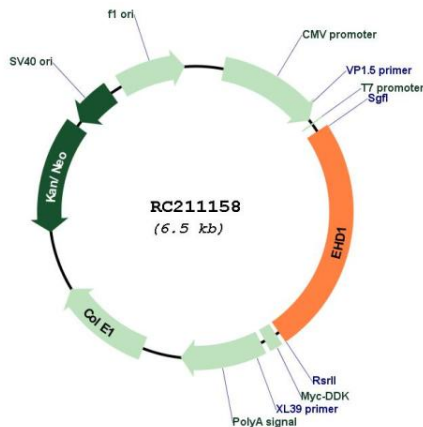
- Reconstitution Method:**
1. Centrifuge at 5,000xg for 5min.
 2. Carefully open the tube and add 100ul of sterile water to dissolve the DNA.
 3. Close the tube and incubate for 10 minutes at room temperature.
 4. Briefly vortex the tube and then do a quick spin (less than 5000xg) to concentrate the liquid at the bottom.
 5. Store the suspended plasmid at -20°C. The DNA is stable for at least one year from date of shipping when stored at -20°C.

RefSeq: [NM_006795.3](#)

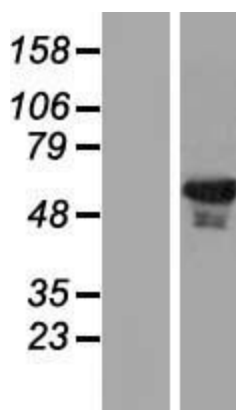
RefSeq Size: 3533 bp
 RefSeq ORF: 1605 bp
 Locus ID: 10938
 UniProt ID: [Q9H4M9](#)
 Cytogenetics: 11q13.1
 Domains: EH, EFh
 Protein Families: Druggable Genome
 Protein Pathways: Endocytosis
 MW: 60.6 kDa

Gene Summary: This gene belongs to a highly conserved gene family encoding EPS15 homology (EH) domain-containing proteins. The protein-binding EH domain was first noted in EPS15, a substrate for the epidermal growth factor receptor. The EH domain has been shown to be an important motif in proteins involved in protein-protein interactions and in intracellular sorting. The protein encoded by this gene is thought to play a role in the endocytosis of IGF1 receptors. Alternatively spliced transcript variants have been found for this gene. [provided by RefSeq, Sep 2013]

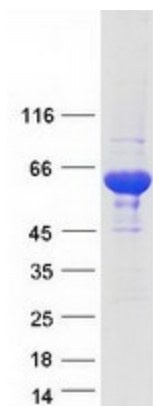
Product images:



Circular map for RC211158



Western blot validation of overexpression lysate (Cat# [LY416419]) using anti-DDK antibody (Cat# [TA50011-100]). Left: Cell lysates from untransfected HEK293T cells; Right: Cell lysates from HEK293T cells transfected with RC211158 using transfection reagent MegaTran 2.0 (Cat# [TT210002]).



Coomassie blue staining of purified EHD1 protein (Cat# [TP311158]). The protein was produced from HEK293T cells transfected with EHD1 cDNA clone (Cat# RC211158) using MegaTran 2.0 (Cat# [TT210002]).