

Product datasheet for RC211155L4

SLC13A5 (NM_177550) Human Tagged Lenti ORF Clone

Product data:

Product Type:	Expression Plasmids
Product Name:	SLC13A5 (NM_177550) Human Tagged Lenti ORF Clone
Tag:	mGFP
Symbol:	SLC13A5
Synonyms:	DEE25; EIEE25; INDY; mIndy; NACT
Mammalian Cell Selection:	Puromycin
Vector:	pLenti-C-mGFP-P2A-Puro (PS100093)
E. coli Selection:	Chloramphenicol (34 ug/mL)
ORF Nucleotide Sequence:	The ORF insert of this clone is exactly the same as(RC211155).
Restriction Sites:	SgfI-MluI
Cloning Scheme:	

Cloning sites used for ORF Shuttling:



* The last codon before the Stop codon of the ORF.

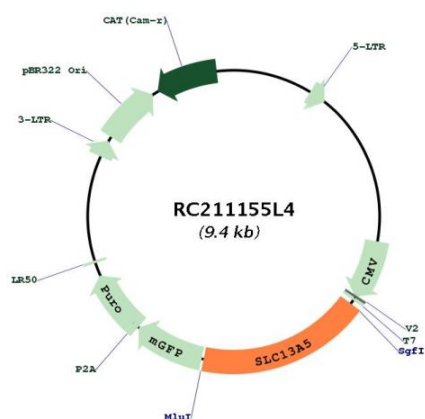
ACCN:	NM_177550
ORF Size:	1704 bp



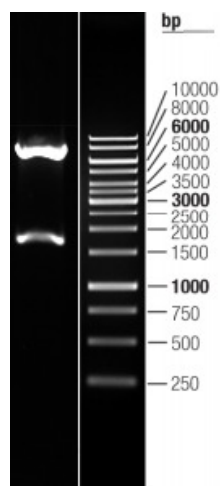
[View online »](#)

OTI Disclaimer:	The molecular sequence of this clone aligns with the gene accession number as a point of reference only. However, individual transcript sequences of the same gene can differ through naturally occurring variations (e.g. polymorphisms), each with its own valid existence. This clone is substantially in agreement with the reference, but a complete review of all prevailing variants is recommended prior to use. More info
OTI Annotation:	This clone was engineered to express the complete ORF with an expression tag. Expression varies depending on the nature of the gene.
Components:	The ORF clone is ion-exchange column purified and shipped in a 2D barcoded Matrix tube containing 10ug of transfection-ready, dried plasmid DNA (reconstitute with 100 ul of water).
Reconstitution Method:	<ol style="list-style-type: none"> 1. Centrifuge at 5,000xg for 5min. 2. Carefully open the tube and add 100ul of sterile water to dissolve the DNA. 3. Close the tube and incubate for 10 minutes at room temperature. 4. Briefly vortex the tube and then do a quick spin (less than 5000xg) to concentrate the liquid at the bottom. 5. Store the suspended plasmid at -20°C. The DNA is stable for at least one year from date of shipping when stored at -20°C.
RefSeq:	NM_177550.2
RefSeq Size:	3316 bp
RefSeq ORF:	1707 bp
Locus ID:	284111
UniProt ID:	Q86YT5
Cytogenetics:	17p13.1
Protein Families:	Transmembrane
MW:	63.1 kDa
Gene Summary:	<p>This gene encodes a protein belonging to the solute carrier family 13 group of proteins. This family member is a sodium-dependent citrate cotransporter that may regulate metabolic processes. Mutations in this gene cause early infantile epileptic encephalopathy 25. Alternative splicing results in multiple transcript variants. [provided by RefSeq, Aug 2014]</p>

Product images:



Circular map for RC211155L4



Double digestion of RC211155L4 using SgfI and MluI