

## Product datasheet for **RC211154**

### OR2L2 (NM\_001004686) Human Tagged ORF Clone

#### Product data:

Product Type:	Expression Plasmids
Product Name:	OR2L2 (NM_001004686) Human Tagged ORF Clone
Tag:	Myc-DDK
Symbol:	OR2L2
Synonyms:	HSHTPCRH07; HTPCRH07; OR1-48; OR2L4P; OR2L12
Mammalian Cell Selection:	Neomycin
Vector:	pCMV6-Entry (PS100001)
E. coli Selection:	Kanamycin (25 ug/mL)
ORF Nucleotide Sequence:	>RC211154 ORF sequence Red=Cloning site Blue=ORF Green=Tags(s)

TTTTGTAATACGACTCACTATAGGGCGGCCGGAATTCGTCGACTGGATCCGGTACCGAGGAGATCTGCC  
GCC**CGATCGCC**

ATGGAAAATTACAATCAAACATCAACTGATTTTCATCTTATTGGGGCTGTTCCACAATCAAGAATTGGCC  
TTTTCGTATTCACCCTCATTTTTCTCATTTTCCTAATGGCTCTAATTGGAAATCTATCCATGATTCTTCT  
CATCTTTTGGACATCCATCTCCACACACCTATGTATTTCTACTTAGTCAGCTCTCCCTCATTGACCTA  
AATTACATCTCCACCATTGTTCCAAAGATGGTTTATGATTTTCTGTATGGAAACAAGTCTATCTCCTTCA  
CTGGATGTGGGATTCAGAGTTTCTTCTTCTTGACTTTAGCAGTTGCAGAAGGGCTGCTCCTGACATCAAT  
GGCCTATGATCGTTATGTGGCCATTTGCTTTCCTCTCCACTATCCCATCGTATAAGCAAAAGAGTGTGT  
GTGATGATGATAACAGGATCTTGGATGATAAGCTCTATCAACTCTTGTGCTCACACAGTATATGCACTCT  
GTATCCCATATTGCAAGTCCAGAGCCATCAATCATTTTTTCTGTGATGTTCCAGCTATGTTGACGCTAGC  
CTGCACAGACACTTGGGTCTATGAGAGCACAGTGTTTTGGAGCAGCACCATCTTTCTTGTGCTTCTTTTC  
ACTGGTATTGCATGTTTCTATGGCCGGTTCTCCTTGTGCTTACCGCATGCACTCTGCAGAAGGGAGGA  
AGAAGGCCATTCAACCTGTAGCACCCACCTCACTGTAGTGTCTTCTACTATGCACCCTTTGCTTATAC  
CTATGTACGTCCAAGATCCCTGCGATCTCCAACAGAGGACAAGATTCTGGCTGTTTTCTACACCATCCTC  
ACCCCAATGCTCAACCCATCATCTACAGCCTGAGAAACAAGGAGGTGATGGGGCCCTGACACAAGTGA  
TTCAGAAAATCTTCTCAGTAAAAATG

**ACGCGT**ACGCGGCCGCTCGAGCAGAAACTCATCTCAGAAGAGGATCTGGCAGCAAATGATATCCTGGATT  
ACAAGGATGACGACGATAAGGTTTAA



[View online »](#)

**Protein Sequence:** >RC211154 protein sequence  
Red=Cloning site Green=Tags(s)

MENYNQTSDFILLGLFPQSRIGLVFTLIFLIFLMALIGNLSMILLIFLDIHLHTPMYFLLSQLSLIDL  
 NYISTIVPKMVDLYGNKSI SFTGCGIQSFFFLTLAVAEGLLLTSMAYDRYVAICFPLHYPIRISKRVC  
 VMMITGWSMISSINCAHTVYALCIPYCKSRAINHFFCDVPAMLTLACTDTWVYESTVFLSSTIFLVLPF  
 TGIACSYGRVLLAVYRMHSAEGRKKAYSTCSTHLTVVSFYYPFAYTYVRPRSLRSPTEDKILAVFYTIL  
 TPMLNPIIYSLRNKEVMGALTQVIQKIFSVKM

TRTRPLEQKLISEEDLAANDILDYKDDDDKV

**Chromatograms:** [https://cdn.origene.com/chromatograms/mk6590\\_h04.zip](https://cdn.origene.com/chromatograms/mk6590_h04.zip)

**Restriction Sites:** SgfI-MluI

**Cloning Scheme:**



**ACCN:** NM\_001004686

**ORF Size:** 936 bp

**OTI Disclaimer:** The molecular sequence of this clone aligns with the gene accession number as a point of reference only. However, individual transcript sequences of the same gene can differ through naturally occurring variations (e.g. polymorphisms), each with its own valid existence. This clone is substantially in agreement with the reference, but a complete review of all prevailing variants is recommended prior to use. [More info](#)

**OTI Annotation:** This clone was engineered to express the complete ORF with an expression tag. Expression varies depending on the nature of the gene.

**Components:** The ORF clone is ion-exchange column purified and shipped in a 2D barcoded Matrix tube containing 10ug of transfection-ready, dried plasmid DNA (reconstitute with 100 ul of water).

**Reconstitution Method:**

1. Centrifuge at 5,000xg for 5min.
2. Carefully open the tube and add 100ul of sterile water to dissolve the DNA.
3. Close the tube and incubate for 10 minutes at room temperature.
4. Briefly vortex the tube and then do a quick spin (less than 5000xg) to concentrate the liquid at the bottom.
5. Store the suspended plasmid at -20°C. The DNA is stable for at least one year from date of shipping when stored at -20°C.

**RefSeq:** [NM\\_001004686.2](#), [NP\\_001004686.1](#)

**RefSeq Size:** 1134 bp

**RefSeq ORF:** 939 bp

**Locus ID:** 26246

**UniProt ID:** [Q8NH16](#)

**Cytogenetics:** 1q44

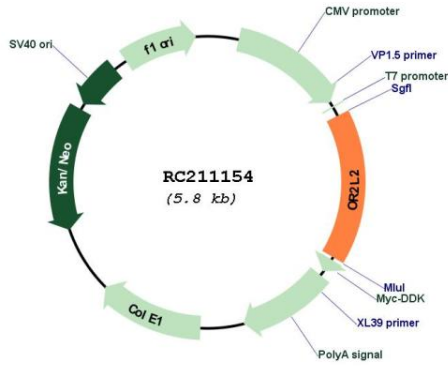
**Protein Families:** Transmembrane

**Protein Pathways:** Olfactory transduction

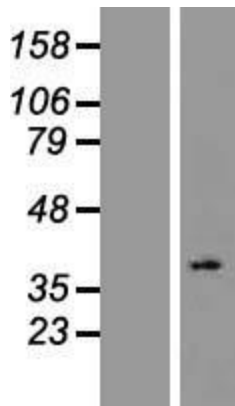
**MW:** 35.5 kDa

**Gene Summary:** Olfactory receptors interact with odorant molecules in the nose, to initiate a neuronal response that triggers the perception of a smell. The olfactory receptor proteins are members of a large family of G-protein-coupled receptors (GPCR) arising from single coding-exon genes. Olfactory receptors share a 7-transmembrane domain structure with many neurotransmitter and hormone receptors and are responsible for the recognition and G protein-mediated transduction of odorant signals. The olfactory receptor gene family is the largest in the genome. The nomenclature assigned to the olfactory receptor genes and proteins for this organism is independent of other organisms. [provided by RefSeq, Jul 2008]

Product images:



Circular map for RC211154



Western blot validation of overexpression lysate (Cat# [LY423874]) using anti-DDK antibody (Cat# [TA50011-100]). Left: Cell lysates from untransfected HEK293T cells; Right: Cell lysates from HEK293T cells transfected with RC211154 using transfection reagent MegaTran 2.0 (Cat# [TT210002]).