

Product datasheet for **RC211153**

NOL5A (NOP56) (NM_006392) Human Tagged ORF Clone

Product data:

Product Type:	Expression Plasmids
Product Name:	NOL5A (NOP56) (NM_006392) Human Tagged ORF Clone
Tag:	Myc-DDK
Symbol:	NOL5A
Synonyms:	NOL5A; SCA36
Mammalian Cell Selection:	Neomycin
Vector:	pCMV6-Entry (PS100001)
E. coli Selection:	Kanamycin (25 ug/mL)



[View online »](#)

ORF Nucleotide Sequence:

>RC211153 ORF sequence
 Red=Cloning site Blue=ORF Green=Tags(s)

TTTTGTAATACGACTCACTATAGGGCGGCCGGGAATTCGTCGACTGGATCCGGTACCGAGGAGATCTGCC
 GCC**CGCATCGCC**

ATGGTGTCTTGCACGTGCTGTTTGTAGCACCGGTGCGCTACGCGTCTGGCGTGAAGGAAGTGGAGG
 AGATCAGTCTGCTGCAGCCGAGGTGGAGGAGTCCGTGCTCAACCTGGGCAAATCCACAGCATCGTTCCG
 TCTGGTGGCCTTTTGTCCCTTTCCTCATCCCAGTTGCCTTGGAAAATGCCAACGCCGTGTCTGAAGGG
 GTTGTTCATGAGGACCTCCGCTGCTCTTGAGACCCACCTGCCGTCCAAAAAGAAGAACTACTCTTGG
 GAGTTGGGGATCCCAAGATTGGTGCCGCAATACAGGAGGAGTTAGGGTACAACCTGCCAGACTGGAGGAGT
 CATAGCTGAGATCCTGCGAGGAGTTCGTCTGCACTTCCACAATCTGGTGAAGGGTCTGACCGATCTGTCA
 GCTTGTAAAGCACAGCTGGGGCTGGGACACAGCTATTCCCGTCCAAAGTTAAGTTAATGTGAACCGGG
 TGGACAATATGATCATCCAGTCCATTAGCCTCTGGACCAGCTGGATAAGGACATCAATACCTTCTCTAT
 GCGTGTACAGGAGTGGTACGGGTATCATTCCCGAGCTGGTGAAGATCATCAACGACAATGCCACATAC
 TGCCGTCTTGCCAGTTTATTGGAACCGAAGGGAATGAATGAGGACAAGCTGGAGAAGCTGGAGGAGC
 TGACAATGGATGGGGCCAAAGCTAAGGCTATTCTGGATGCCTCACGGTCTCCATGGGCATGGACATATC
 TGCCATTGACTTGATAAACATCGAGAGCTTCTCCAGTCTGTGGTGTCTTATCTGAATACCGCCAGAGC
 CTACACACTTACCTGCGCTCCAAGATGAGCCAAGTAGCCCCAGCCTGTGAGCCCTAATTGGGGAAGCGG
 TAGGTGCACGCTCATCGACATGTCTGGCAGCCTCACCAACCTGGCCAAGTATCCAGCATCCACAGTGA
 GATCCTTGGGGCTGAAAAGGCCCTGTTCAGAGCCCTGAAGACAAGGGGTAACACCCCAAAATATGGACTC
 ATTTTCCACTCCACCTTATTGGCCGAGCAGCTGCCAAGAACAAGGCCGCATCTCCCGATACCTGGCAA
 ACAAAATGCAGTATTGCCCTACGAATCGATTGCTTCTCTGAGGTGCCACGAGTGTATTCCGGGGAAGCT
 TCGAGAACAAGTTGAAGAGCGACTGCTTCTATGAGACTGGAGAGATACCACGAAAGAATCTGGATGTC
 ATGAAGGAAGCAATGGTTCAGGCAGAGGAAGCGGCTGCTGAGATTACTAGGAAGCTGGAGAAACAGGAGA
 AGAAACGCTTAAAGAAGGAAAAGAAACGGCTGGCTGCACTTGCCCTCGCGTCTTTCAGAAAACAGCAGTAG
 TACTCCAGAGGAGTGTGAGGAGATGAGTGAAGAAACCCAAAAAGAAAAGCAAAGGCCAGGAGGTT
 CCTCAGGAGAATGGAATGGAAGACCCATCTATCTTTTCCAAACCAAGAAAAGAAATCTTTTTCCA
 AGGAGGAGTTGATGAGTAGCGATCTTGAAGAGACCGCTGGCAGCACCAGTATTCCCAAGAGGAAGAAGTC
 TACACCAAGGAGGAAACAGTTAATGACCCTGAGGAGGCCAGCCACAGAAGTGGCTCCAAGAAAAGAGG
 AAATTCTCAAAGAGGAGCCGGTACAGCTGGGCTGAAGAGCGGTTGGCAAGAGCAGCTCCAAGAAGA
 AGAAAAAGTTCCATAAAGCATCCAGGAAGAT

ACGCGTACGCGGCCGCTCGAGCAGAACTCATCTCAGAAGAGGATCTGGCAGCAAATGATATCCTGGATT
 ACAAGGATGACGACGATAAGGTTTAA

Protein Sequence:

>RC211153 protein sequence
 Red=Cloning site Green=Tags(s)

MVLLHVLFEHAVGYALLALKEVEEISLLQPQVEESVLNLGKFHSHIVRLVAFCPFASSQVALENANAVSEG
 VVHEDLRLLLETHLPSKKKVVLLGVDPKIGAAIQEELGYNCQTGGVIAEILRGVRLHFHNLVKGLTDL
 ACKAQLGLGHSYSRAKVKFNVNRVDNMIQSI SLLDQLDKDINTFSMRVREWYGYHFPPEL VKIINDNATY
 CRLAQFIGNRRELNEDKLEKLEELTMDGAKAKAILDASRSMGMDISAIIDLINIESFSSRVVSLSEYRQS
 LHLYLRKMSQVAPSLSALIGEAVGARL IAHAGSLTNLAKYPASTVQILGAEKALFRALKTRGNTPKYGL
 IFHSTFIGRAAAKNKGRISRYLANKCSIASRIDCFSEVPTSVFGEKLRQVEERLSFYETGEIPRKNLDV
 MKEAMVQAEAAAAEITRKLEKQEKRLKKEKRLAALALASSESSSTPEECEEMSEKPKKKKQKQPEV
 PQENGMEDPSISFSKPKKKSFSKEELMSSDLEETAGSTSIPKRKSTPKEETVNDPEEAGHRSGSKKKR
 KFSKEEPVSSGPPEAVGKSSSKKKKFKHAKSQED

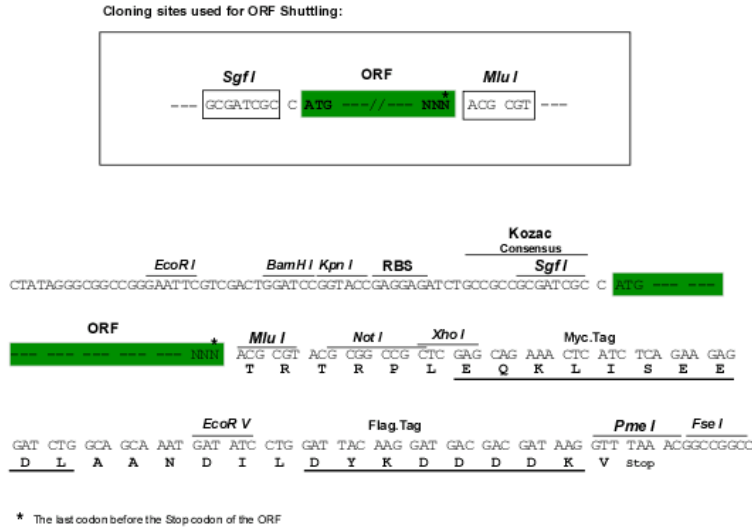
TRTRPLEQKLISEEDLAANDILDYKDDDDKV

Chromatograms:

https://cdn.origene.com/chromatograms/mk6373_c11.zip

Restriction Sites: SgfI-MluI

Cloning Scheme:



ACCN: NM_006392

ORF Size: 1782 bp

OTI Disclaimer: The molecular sequence of this clone aligns with the gene accession number as a point of reference only. However, individual transcript sequences of the same gene can differ through naturally occurring variations (e.g. polymorphisms), each with its own valid existence. This clone is substantially in agreement with the reference, but a complete review of all prevailing variants is recommended prior to use. [More info](#)

OTI Annotation: This clone was engineered to express the complete ORF with an expression tag. Expression varies depending on the nature of the gene.

Components: The ORF clone is ion-exchange column purified and shipped in a 2D barcoded Matrix tube containing 10ug of transfection-ready, dried plasmid DNA (reconstitute with 100 ul of water).

- Reconstitution Method:
1. Centrifuge at 5,000xg for 5min.
 2. Carefully open the tube and add 100ul of sterile water to dissolve the DNA.
 3. Close the tube and incubate for 10 minutes at room temperature.
 4. Briefly vortex the tube and then do a quick spin (less than 5000xg) to concentrate the liquid at the bottom.
 5. Store the suspended plasmid at -20°C. The DNA is stable for at least one year from date of shipping when stored at -20°C.

RefSeq: [NM_006392.4](#)

RefSeq Size: 2068 bp

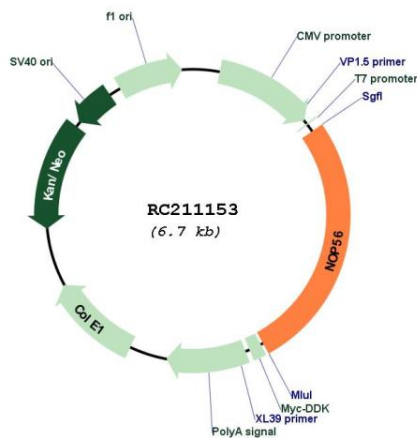
RefSeq ORF: 1785 bp

Locus ID: 10528

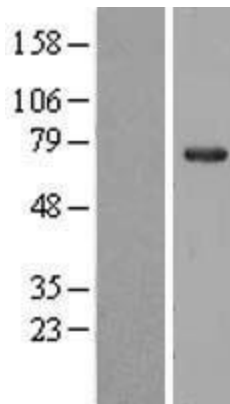
UniProt ID: [O00567](#)
Cytogenetics: 20p13
Domains: Nop
Protein Families: Stem cell - Pluripotency
MW: 66 kDa

Gene Summary: Nop56p is a yeast nucleolar protein that is part of a complex with the nucleolar proteins Nop58p and fibrillarin. Nop56p is required for assembly of the 60S ribosomal subunit and is involved in pre-rRNA processing. The protein encoded by this gene is similar in sequence to Nop56p and is also found in the nucleolus. Expansion of a GGCCTG repeat from 3-8 copies to 1500-2500 copies in an intron of this gene results in spinocerebellar ataxia 36. Multiple transcript variants encoding several different isoforms have been found for this gene, but the full-length nature of most of them has not been determined. [provided by RefSeq, Jul 2016]

Product images:



Circular map for RC211153



Western blot validation of overexpression lysate (Cat# [LY416675]) using anti-DDK antibody (Cat# [TA50011-100]). Left: Cell lysates from untransfected HEK293T cells; Right: Cell lysates from HEK293T cells transfected with RC211153 using transfection reagent MegaTran 2.0 (Cat# [TT210002]).