

## Product datasheet for RC211152

### BCL2L2 (NM\_004050) Human Tagged ORF Clone

#### Product data:

**Product Type:** Expression Plasmids  
**Product Name:** BCL2L2 (NM\_004050) Human Tagged ORF Clone  
**Tag:** Myc-DDK  
**Symbol:** BCL2L2  
**Synonyms:** BCL-W; BCL2-L-2; BCLW; PPP1R51  
**Mammalian Cell Selection:** Neomycin  
**Vector:** pCMV6-Entry (PS100001)  
**E. coli Selection:** Kanamycin (25 ug/mL)  
**ORF Nucleotide Sequence:** >RC211152 ORF sequence  
 Red=Cloning site Blue=ORF Green=Tags(s)

TTTTGTAATACGACTCACTATAGGGCGCCGGGAATTCGTCGACTGGATCCGGTACCGAGGAGATCTGCC  
 GCC**CGATCGCC**

ATGGGCAGCCAGCCTCGGCCAGACACGGGCTCTGGTGGCAGACTTTGTAGTTATAAGCTGAGGC  
 AGAAGGGTTATGTCTGTGGAGCTGGCCCCGGGGAGGGCCAGCAGCTGACCCGCTGCACCAAGCCATGCC  
 GGCAGCTGGAGATGAGTTCGAGACCCGCTCCGGCGCACCTTCTCTGATCTGGCGCTCAGCTGCATGTG  
 ACCCCAGGCTCAGCCCAACAACGCTTACCAGGTCTCCGATGAACTTTTCAAGGGGGCCCAACTGGG  
 GCCGCTTGTAGCCTTTTGTCTTTGGGGCTGACTGTGTGCTGAGAGTGTCAACAAGGAGATGGAACC  
 ACTGGTGGACAAGTGCAGGAGTGGATGGTGGCCTACCTGGAGACGCGGCTGGCTGACTGGATCCACAGC  
 AGTGGGGCTGGGCGGAGTTCACAGCTCTATACGGGGACGGGGCCCTGGAGGAGGCGCGGCTCTCGGG  
 AGGGGAAGTGGGCATCAGTGAGGACAGTCTGACGGGGCCGTGGCACTGGGGCCCTGGTAACTGTAGG  
 GCCTTTTTGCTAGCAAG

**ACGCGT**ACGCGGCCGCTCGAGCAGAACTCATCTCAGAAGAGGATCTGGCAGCAATGATATCCTGGATT  
 ACAAGGATGACGACGATAAGGTTTAA

**Protein Sequence:** >RC211152 protein sequence  
 Red=Cloning site Green=Tags(s)

MATPASAPDTRALVADFVGYKLRQKGYVCGAGPGEPAADPLHQAMRAAGDEFETRFRRTFSDLAAQLHV  
 TPGSAQQRFTQVSEDLFQGGPNWGRLVAFFVFGAALCAESVNKEMEPLVGQVQEWVAYLETRLADWIHS  
 SGGWAEFTALYDGALEEARRLREGNWSVRTLGAVALGALVTVGAFASK

**TRTRPLEQKLI**SEEDLAANDILDYKDDDDKV



**Chromatograms:** [https://cdn.origene.com/chromatograms/mk6009\\_d03.zip](https://cdn.origene.com/chromatograms/mk6009_d03.zip)

**Restriction Sites:** SgfI-MluI

**Cloning Scheme:**



**ACCN:** NM\_004050

**ORF Size:** 579 bp

**OTI Disclaimer:** The molecular sequence of this clone aligns with the gene accession number as a point of reference only. However, individual transcript sequences of the same gene can differ through naturally occurring variations (e.g. polymorphisms), each with its own valid existence. This clone is substantially in agreement with the reference, but a complete review of all prevailing variants is recommended prior to use. [More info](#)

**OTI Annotation:** This clone was engineered to express the complete ORF with an expression tag. Expression varies depending on the nature of the gene.

**Components:** The ORF clone is ion-exchange column purified and shipped in a 2D barcoded Matrix tube containing 10ug of transfection-ready, dried plasmid DNA (reconstitute with 100 ul of water).

**Reconstitution Method:**

1. Centrifuge at 5,000xg for 5min.
2. Carefully open the tube and add 100ul of sterile water to dissolve the DNA.
3. Close the tube and incubate for 10 minutes at room temperature.
4. Briefly vortex the tube and then do a quick spin (less than 5000xg) to concentrate the liquid at the bottom.
5. Store the suspended plasmid at -20°C. The DNA is stable for at least one year from date of shipping when stored at -20°C.

**Note:** Plasmids are not sterile. For experiments where strict sterility is required, filtration with 0.22um filter is required.

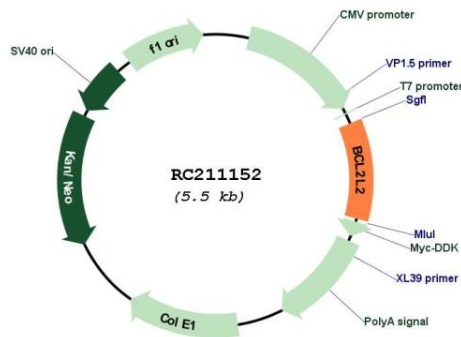
**RefSeq:** [NM\\_004050.4](#)

**RefSeq Size:** 3621 bp

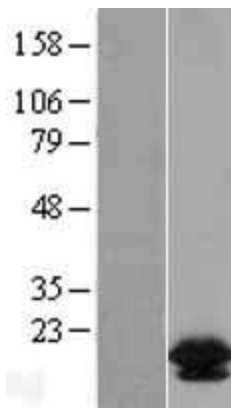
**RefSeq ORF:** 582 bp  
**Locus ID:** 599  
**UniProt ID:** [Q92843](#)  
**Cytogenetics:** 14q11.2  
**Domains:** Bcl-2, BH4  
**Protein Families:** Druggable Genome, Transmembrane  
**MW:** 20.8 kDa

**Gene Summary:** This gene encodes a member of the BCL-2 protein family. The proteins of this family form hetero- or homodimers and act as anti- and pro-apoptotic regulators. Expression of this gene in cells has been shown to contribute to reduced cell apoptosis under cytotoxic conditions. Studies of the related gene in mice indicated a role in the survival of NGF- and BDNF-dependent neurons. Mutation and knockout studies of the mouse gene demonstrated an essential role in adult spermatogenesis. Alternative splicing results in multiple transcript variants. Read-through transcription also exists between this gene and the neighboring downstream PABPN1 (poly(A) binding protein, nuclear 1) gene. [provided by RefSeq, Dec 2010]

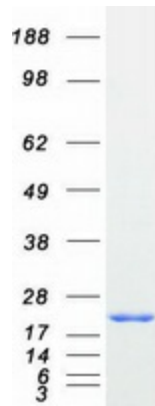
### Product images:



Circular map for RC211152



Western blot validation of overexpression lysate (Cat# [LY401312]) using anti-DDK antibody (Cat# [TA50011-100]). Left: Cell lysates from untransfected HEK293T cells; Right: Cell lysates from HEK293T cells transfected with RC211152 using transfection reagent MegaTran 2.0 (Cat# [TT210002]).



Coomassie blue staining of purified BCL2L2 protein (Cat# [TP311152]). The protein was produced from HEK293T cells transfected with BCL2L2 cDNA clone (Cat# RC211152) using MegaTran 2.0 (Cat# [TT210002]).