

## Product datasheet for **RC211149L4V**

### IL1RAPL2 (NM\_017416) Human Tagged ORF Clone Lentiviral Particle

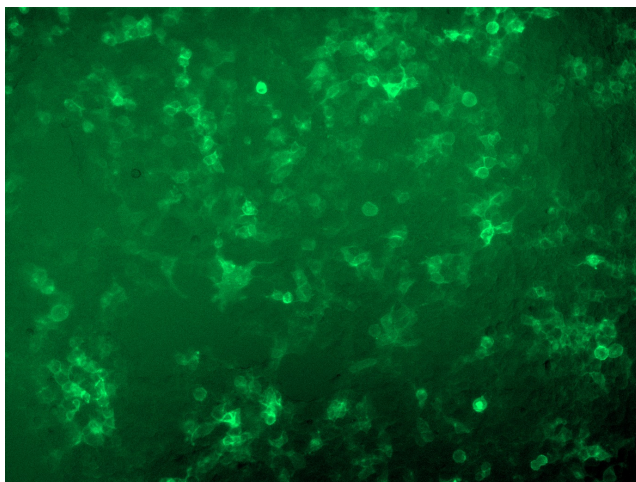
#### Product data:

Product Type:	Lentiviral Particles
Product Name:	IL1RAPL2 (NM_017416) Human Tagged ORF Clone Lentiviral Particle
Symbol:	IL1RAPL2
Synonyms:	IL-1R9; IL1R9; IL1RAPL-2; TIGIRR-1
Mammalian Cell Selection:	Puromycin
Vector:	pLenti-C-mGFP-P2A-Puro (PS100093)
Tag:	mGFP
ACCN:	NM_017416
ORF Size:	2058 bp
ORF Nucleotide Sequence:	The ORF insert of this clone is exactly the same as(RC211149).
OTI Disclaimer:	The molecular sequence of this clone aligns with the gene accession number as a point of reference only. However, individual transcript sequences of the same gene can differ through naturally occurring variations (e.g. polymorphisms), each with its own valid existence. This clone is substantially in agreement with the reference, but a complete review of all prevailing variants is recommended prior to use. <a href="#">More info</a>
OTI Annotation:	This clone was engineered to express the complete ORF with an expression tag. Expression varies depending on the nature of the gene.
RefSeq:	<a href="#">NM_017416.1</a>
RefSeq Size:	2985 bp
RefSeq ORF:	2061 bp
Locus ID:	26280
UniProt ID:	<a href="#">Q9NP60</a>
Cytogenetics:	Xq22.3
Protein Families:	Druggable Genome, Transmembrane
MW:	78.7 kDa


[View online »](#)

**Gene Summary:**

The protein encoded by this gene is a member of the interleukin 1 receptor family. This protein is similar to the interleukin 1 accessory proteins, and is most closely related to interleukin 1 receptor accessory protein-like 1 (IL1RAPL1). This gene and IL1RAPL1 are located at a region on chromosome X that is associated with X-linked non-syndromic cognitive disability. [provided by RefSeq, Jul 2008]

**Product images:**

[RC211149L4] was used to prepare Lentiviral particles using [TR30037] packaging kit. HEK293T cells were transduced with RC211149L4V particle to overexpress human IL1RAPL2-mGFP fusion protein.