

Product datasheet for **RC211149**

IL1RAPL2 (NM_017416) Human Tagged ORF Clone

Product data:

Product Type:	Expression Plasmids
Product Name:	IL1RAPL2 (NM_017416) Human Tagged ORF Clone
Tag:	Myc-DDK
Symbol:	IL1RAPL2
Synonyms:	IL-1R9; IL1R9; IL1RAPL-2; TIGIRR-1
Mammalian Cell Selection:	Neomycin
Vector:	pCMV6-Entry (PS100001)
E. coli Selection:	Kanamycin (25 ug/mL)



[View online »](#)

ORF Nucleotide
Sequence:

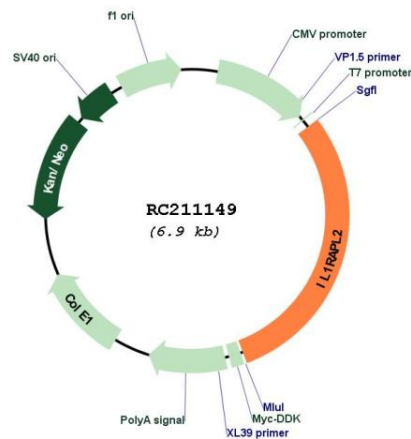
>RC211149 ORF sequence

Red=Cloning site Blue=ORF Green=Tags(s)

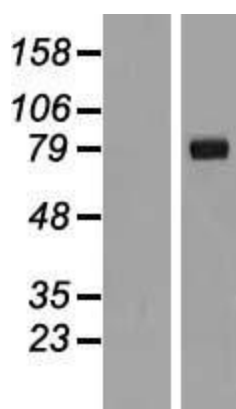
TTTTGTAATACGACTCACTATAGGGCGGCCGGGAATTCGTCGACTGGATCCGGTACCGAGGAGATCTGCC
GCCGCGATCGCCATGAAGCCACCATTCTTTGGCCCTTGTGGTCTGTTCTGTAGTCAGCACAAATCTGAAGATGGTGTCAA
AGAGAAATCTGTGGATGGCTGCATTGACTGGTCAGTGGATCTCAAGACATACATGGCTTTGGCAGGTGA
ACCACTCCGAGTGAATGTGCCCTTTCTACAGTTATATTCGTACCAACTATAGCACGGCCAGAGCACT
GGGCTCAGGCTTATGTGGTACAAAAACAAAGGTGATTTGGAAGAGCCCATCATCTTTTCAGAGGTCAGGA
TGAGCAAAGAGGAAGATTCAATATGGTTTCACTCAGCTGAGGCACAAGACAGTGGATTCTACACTTGTGT
TTAAGAACTCAACATATTGCATGAAGGTGTCAATGTCCTTGACTGTTGCAGAGAATGAATCAGGCCTG
TGCTACAACAGCAGGATCCGCTATTTAGAAAACTGAAGTCACTAAAAGAAAGGAGATCTCCTGTCCAG
ACATGGATGACTTTAAAAAGTCCGATCAGGAGCCTGATGTTGTGGTATAAGGAATGCAAGCCAAAAAT
GTGGAGAAGCATAATAACAGAAAGGAAATGCTCTTCTGATCCAAGAAGTTCAAGAAGAAGATGGAGGA
AATTACACATGTGAACCTAAATATGAAGGAAAATTTGAAGACGAACAACCTGAATTGAAAGTTACAGCTT
TACTCACAGACAAGCCTCCCAAGCCATTGTTCCCATGGAGAATCAGCCAAGTGTATAGATGTCCAGCT
GGGTAAGCCTCTGAACATCCCCTGCAAAGCATTCTTCGGATTCACTGGAGAGTCTGGGCCAATGATCTAC
TGGATGAAAGGAGAAAAGTTTATTGAAGAACTGGCAGGTCACTTAGAGAAGGTGAAATAAGGCTTCTCA
AAGAGCATCTTGGAGAAAAAGAGTTGAATTGGCACTCATCTTTGACTCAGTTGTGGAAGCTGACCTGGC
GAATTATACCTGCCATGTTGAAAACCGAAATGGACGGAACATGCCAGTGTGTTGCTGCGTAAAAAGGAT
TTAATCTATAAAATTGAGCTTGCAGGGGGCCTGGGAGCAATCTTCTCCTCCTCTTACTGCTGGTGGTCA
TTTACAATGCTACAACATTGAATTGATGCTCTTCTACAGGCAGCACTTTGGAGCTGATGAACTAATGA
TGACAACAAGGAATATGATGCCTATCTCTTACACAAAAGTGGACCAAGATACTTTAGACTGTGACAAT
CCTGAAGAAGAGCAGTTTCTTGAAGTACTGCCAGATGTCCTGGAAAAACACTATGGATATAAACTCT
TCATCCCAGAAAGAGACCTGATTCCAAGTGAACATACATGGAAGATCTCACAAGATATGTTGAACAAAG
CAGAAGACTTATTATCGTGCTAACTCCAGACTATATTCTCAGACGGGGATGGAGTATTTTCGAACTGGAA
AGCAGACTCCATAACATGCTAGTCAGTGGAGAAATCAAAGTATTTTGAATGAGTGTACAGAATAAAAG
GGAAAGTGAATTGCCAGGAAGTGAATCACTAAAGCGTAGCATCAAACCTCTGTCCCTGATCAAGTGGAA
GGGATCCAAAAGCAGCAAATTAATTTCTAAGTTTTGGAAGCACTTAGTATATGAAATGCCCATCAAGAAA
AAAGAAATGCTACCTCGGTGCCATGTTCTGGACTCCGAGCAACAAGGACTTTTTGGAGAACTCCAGCCTA
TACCCTCTATTGCCATGACCAGTACTTCAGCCACTCTGGTGTATCTCAGGCTGATCTCCCTGAATTCCA
CCCTTCAGATTCAATGCAATCAGGCACTGTTGCAGAGGTTATAAACATGAGATACCAGCCACGACCTTG
CCAGTACCTTCTTAGGCAACCACCATACTTATTGTAACCTGCCTCTGACGCTACTCAACGGACAGCTAC
CCCTTAATAACACCCTGAAAGATACCCAGGAATTTACAGGAACAGTTCTTTGCTGCCTTATCTCCCAA
AGAGCTTAGCTTACCAGTGATATTTGGACGCGTACGCGGCCGCTCGAGCAGAACTCATCTCAGAAGAGGATCTGGCAGCAAATGATATCCTGGATT
ACAAGGATGACGACGATAAGGTTTAA

Components:	The ORF clone is ion-exchange column purified and shipped in a 2D barcoded Matrix tube containing 10ug of transfection-ready, dried plasmid DNA (reconstitute with 100 ul of water).
Reconstitution Method:	<ol style="list-style-type: none"> 1. Centrifuge at 5,000xg for 5min. 2. Carefully open the tube and add 100ul of sterile water to dissolve the DNA. 3. Close the tube and incubate for 10 minutes at room temperature. 4. Briefly vortex the tube and then do a quick spin (less than 5000xg) to concentrate the liquid at the bottom. 5. Store the suspended plasmid at -20°C. The DNA is stable for at least one year from date of shipping when stored at -20°C.
RefSeq:	<u>NM_017416.2</u>
RefSeq Size:	2985 bp
RefSeq ORF:	2061 bp
Locus ID:	26280
UniProt ID:	<u>Q9NP60</u>
Cytogenetics:	Xq22.3
Protein Families:	Druggable Genome, Transmembrane
MW:	78.7 kDa
Gene Summary:	The protein encoded by this gene is a member of the interleukin 1 receptor family. This protein is similar to the interleukin 1 accessory proteins, and is most closely related to interleukin 1 receptor accessory protein-like 1 (IL1RAPL1). This gene and IL1RAPL1 are located at a region on chromosome X that is associated with X-linked non-syndromic cognitive disability. [provided by RefSeq, Jul 2008]

Product images:



Circular map for RC211149



Western blot validation of overexpression lysate (Cat# [LY413774]) using anti-DDK antibody (Cat# [TA50011-100]). Left: Cell lysates from untransfected HEK293T cells; Right: Cell lysates from HEK293T cells transfected with RC211149 using transfection reagent MegaTran 2.0 (Cat# [TT210002]).