

Product datasheet for RC211139

TCEAL2 (NM_080390) Human Tagged ORF Clone

Product data:

Product Type:	Expression Plasmids
Product Name:	TCEAL2 (NM_080390) Human Tagged ORF Clone
Tag:	Myc-DDK
Symbol:	TCEAL2
Synonyms:	my048; MY0876G05; WEX1
Mammalian Cell Selection:	Neomycin
Vector:	pCMV6-Entry (PS100001)
E. coli Selection:	Kanamycin (25 ug/mL)
ORF Nucleotide Sequence:	>RC211139 ORF sequence Red=Cloning site Blue=ORF Green=Tags(s)

TTTTGTAATACGACTCACTATAGGGCGCCGGAATTCGTCGACTGGATCCGGTACCGAGGAGATCTGCC
GCCCGATCGCC

ATGAAAAACTCTTCAATGAAAATGAAGGAATGCCTTCGAATCAAGGAAAGATAGACAATGAAGAACAGC
CACCGCACGAGGGAAAGCCAGAAGTAGCTTGTATTCTGGAAGACAAGAAGTTAGAAAACGAGGGAAACAC
AGAAAACACGGGCAAGAGAGTTGAGGAACCGTTAAAGGATAAAGAAAAGCCAGAGAGTGCGGAAAGGCA
AAAGGAGAAGGAAAGTCAGAGAGGAAGGAAAGTCAGAGATGCAGGGAGGATCAAAGACAGAGGGAAAGC
CAGAGAGAGGGGAAGGGCAGAGGGTGAAGGAGAGCCAGACAGTAAAGAGAGCCAGAGAGTGAGGGAGA
GCCAGAAAGTAAACAAGGGCTGCAGGAAAGCGCCAGCTGAGGATGATATACCCAGGAAAGCCAAAAGA
AAAACCAACAAGGGCTGGCTCAGTACCTCAAGCAATATAAGGAAGCCATACATGATATGAATTTTCAGCA
ATGAGGACATGATAAGAGAATTTGACAACATGGCTAGGGTGGAGGATAAAAGGAGAAAAAGCAAACAGAA
ATTGGGGCGTTTTTTGTGGATGCAAAGAAATTTACAGGACCCCTTCTATCCTAGGGGTCCAAGGGAATTC
AGGGGTGGCTGCAGGGCCCCACGAAGGGGACTGAAGACATTCCTTATGTG

ACGCGTACGCGGCGCTCGAGCAGAACTCATCTCAGAAGAGGATCTGGCAGCAAATGATATCCTGGATT
ACAAGGATGACGACGATAAGGTTTAA



[View online »](#)

Protein Sequence: >RC211139 protein sequence
Red=Cloning site Green=Tags(s)

MEKLFNENEGMPSNQGKIDNEEQPPHEGKPEVACILEDKLENEGNTENTGKRVEEPLKDKEKPESAGKA
 KGEKSERKGGKSEMGGGSKTEGKPERGGRAEAGEGEPDSEREPESEGEPESETRAAGKRP AEDDIPRKA KR
 KTNKGLAQYLKQYKEAIHDMNFSNEDMIREFDN MARVEDKRRKSKQKLGAF LWMQRNLQDPFYRGPREF
 RGGCRAPRRDTE DIPYV

TRTRPLEQKLISEEDLAANDILDYKDDDDKV

Chromatograms: https://cdn.origene.com/chromatograms/mk6372_c06.zip

Restriction Sites: SgfI-MluI

Cloning Scheme:



ACCN: NM_080390

ORF Size: 681 bp

OTI Disclaimer: The molecular sequence of this clone aligns with the gene accession number as a point of reference only. However, individual transcript sequences of the same gene can differ through naturally occurring variations (e.g. polymorphisms), each with its own valid existence. This clone is substantially in agreement with the reference, but a complete review of all prevailing variants is recommended prior to use. [More info](#)

OTI Annotation: This clone was engineered to express the complete ORF with an expression tag. Expression varies depending on the nature of the gene.

Components: The ORF clone is ion-exchange column purified and shipped in a 2D barcoded Matrix tube containing 10ug of transfection-ready, dried plasmid DNA (reconstitute with 100 ul of water).

Reconstitution Method:

1. Centrifuge at 5,000xg for 5min.
2. Carefully open the tube and add 100ul of sterile water to dissolve the DNA.
3. Close the tube and incubate for 10 minutes at room temperature.
4. Briefly vortex the tube and then do a quick spin (less than 5000xg) to concentrate the liquid at the bottom.
5. Store the suspended plasmid at -20°C. The DNA is stable for at least one year from date of shipping when stored at -20°C.

RefSeq: [NM_080390.4](#)

RefSeq Size: 1123 bp

RefSeq ORF: 684 bp

Locus ID: 140597

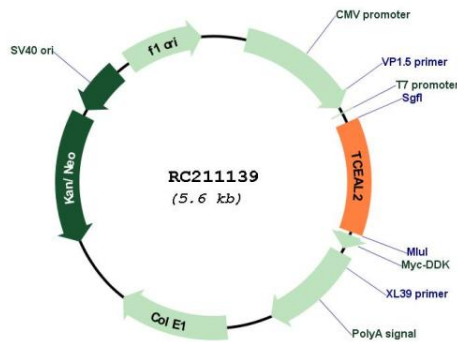
UniProt ID: [Q9H3H9](#)

Cytogenetics: Xq22.1

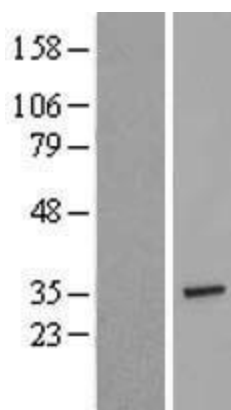
MW: 25.8 kDa

Gene Summary: This gene encodes a member of the transcription elongation factor A (SII)-like (TCEAL) gene family. Members of this family contain TFA domains and may function as nuclear phosphoproteins that modulate transcription in a promoter context-dependent manner. Multiple family members are located on the X chromosome. [provided by RefSeq, Jul 2008]

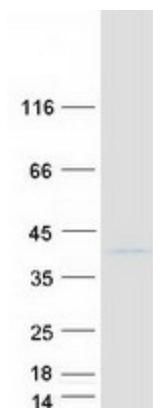
Product images:



Circular map for RC211139



Western blot validation of overexpression lysate (Cat# [LY409183]) using anti-DDK antibody (Cat# [TA50011-100]). Left: Cell lysates from untransfected HEK293T cells; Right: Cell lysates from HEK293T cells transfected with RC211139 using transfection reagent MegaTran 2.0 (Cat# [TT210002]).



Coomassie blue staining of purified TCEAL2 protein (Cat# [TP311139]). The protein was produced from HEK293T cells transfected with TCEAL2 cDNA clone (Cat# RC211139) using MegaTran 2.0 (Cat# [TT210002]).