

Product datasheet for **RC211137**

HMG2L1 (HMGXB4) (NM_005487) Human Tagged ORF Clone

Product data:

Product Type:	Expression Plasmids
Product Name:	HMG2L1 (HMGXB4) (NM_005487) Human Tagged ORF Clone
Tag:	Myc-DDK
Symbol:	HMG2L1
Synonyms:	high-mobility group protein 2-like 1; HMG2L1; HMGBCG; HMG box domain containing 4; OTTHUMP00000028778; THC211630
Mammalian Cell Selection:	Neomycin
Vector:	pCMV6-Entry (PS100001)
E. coli Selection:	Kanamycin (25 ug/mL)



[View online »](#)

ORF Nucleotide Sequence:

>RC211137 ORF sequence
 Red=Cloning site Blue=ORF Green=Tags(s)

TTTTGTAATACGACTCACTATAGGGCGGCCGGAATTCGTCGACTGGATCCGGTACCGAGGAGATCTGCC
 GCC**CGGATCGCC**

ATGGACCTGTTGAAAGCTATCACTTCCCCACTGGCAGCAGGCTCCAAGCCCTCCAAAAGACTGGGGAGA
 AATCCTCTGGCTCTTCAAGCCATTTCGGAGAGTAAAAAGGAGCACACAGGAAGAAAGTCAGTGGAAGCAG
 TGGGGAATACCCCTAGAGGATGGTGTCTCCACAAAATCGAAAAAATGAAACCTCTCTATGTGAACACA
 GAGACTGACCCCTCGGGAGCCTGATGGTTTAAAAATGAAACTTATTCTGTACCAAAGGAGAAGGGAA
 GCAGCTCTGTTGATGAGGAGTCTTTTCAATATCCCTCCCAACAAGCGACTGTGAAAAATCTCAAAGAA
 ATCAGCTCGGGATGAGCAGGGTCTTTACTCCTAGGACATGAGTTACAGAGCTTTCTGAAAAACAGCCCG
 AAAAAGCACAAAGTCATCCTCAGACGCACATTCATCTCTGGCCCTGAAGGCTGTGGGTCTGACGCCCTCC
 AGTTCGCAGAGTCCACAGTCTAACCTTGATCTTTCAGGGCTTGAACCTATTCTGGTAGAATCAGACTC
 ATCCTCTGGTGGGAACTAGAGGCTGGGGAGTTAGTGATAGATGATTCTTACCGAGAATCAAGAAGAAA
 AAGAAGTCAAAGAAGAGCAAAAAGAAGAAAGACAAGGAGAAGCATAAAGAGAAGCGACACTCCAAGTCCA
 AGAGAAGTTTAGGACTTTCTGCCGTGCCAGTGGGAGAGGTCACAGTGACATCTGGCCCTCTCCAGCAT
 CCCATACGCTGGAGCAGCAGCACCTCCCCTGCCACTTCTGGCCTCCACACAGATGGGCATAGTAAAAA
 AAAAAGAAAAAAGAAGAGAAGGACAAAGAGAGAGAGAGAGAGAGAAAGCCAAAAAAGAAGAACATGTCGG
 CCTACCAGGTGTTCTGTAAGAGTATCGCGTGACCATTGTGGCTGACCATCCAGGTATAGATTTGGGGA
 ACTTAGTAAAAACTGGCTGAGGTGTGGAAGCAATTACCAGAAAAAGACAACTGATTTGGAAGCAAAAA
 GCTCAGTATCTGCAGCACAAACAGAACAAGCAGAAGCCACAACCTGTGAAAAGGAAAGCATCCAGCTCAG
 AAGGTTCCATGAAAGTCAAAGCCTCTTCTGTAGGAGTACTGTACCCCGAAGAAGTCCCCACCCACCAC
 CATGCTGTTACCAGCCTCACCAGCCAAAGCCCTGAGACAGAGCCATTGATGTTGCTGCTCATCTTCAG
 CTGTTGGGAGAGTCCCTAAGCCTCATTGGACACCGTCTGCAGGAACTGAGGGTATGGTGCTGTGTCTG
 GCAGTTTGTGAGTCTTCTGGATTCCATTATCTGTGCCCTTGGCCCTTGGCATGTCTCACCACACAACT
 ACCTGAATTGAATGGCTGTCCCAACAGGTCTTGTCAAACACATTAGACAACATTGCTTACATCATGCCG
 GGACTG

ACGCGTACGCGGCCGCTCGAGCAGAAACTCATCTCAGAAGAGGATCTGGCAGCAATGATATCTGGATT
 ACAAGGATGACGACGATAAGGTTTAA

Protein Sequence:

>RC211137 protein sequence
 Red=Cloning site Green=Tags(s)

MDLLKAITSPLAAGSKPSKKTGEKSSGSSSHSESKKEHHRKVKVSGSSGELPLEDGVSHKSKMKMPLYVNT
 ETLLREPDGLKMKLILSPKEKSSSVDEESFQYPSQQATVKKSSKKSARDEQGALLLGHELQSFLKTR
 KKHKSSSDAHSSPPEGCGSDASQFAESHANLDL SGLPEILVESDSSSGGELEAGELVIDDSYREIKKK
 KKS KSKSKKKKDKKEKHKEKRHSKSKRSLGL SAVPVGEVTVTSGPPPSIPYAGAAAPPLPLPGLHTDGHSEK
 KKKKEEKDKEREREGEKPKKNMSAYQVFCKEYRVTIVADHPGIDFGELSKKLAEVWKQLPEKDKL IWKQK
 AQYLQHKQNKAETTVKRKASSSESGMKVKASSVGVLS PQKKSPTTMLLPASPAPKETEPIDVAHLQ
 LLGESLSLIGHRLQETEGMVAVSGSL SVLLDSIICALGPLACLTTQLPELNGCPKQVLSNTLDNIAYIMP
 GL

TRTRPLEQKLISEEDLAANDILDYKDDDDKV

Chromatograms:

https://cdn.origene.com/chromatograms/mk6372_d10.zip

Restriction Sites:

Sgfl-Mlul

Cloning Scheme:


ACCN: NM_005487

ORF Size: 1476 bp

OTI Disclaimer: The molecular sequence of this clone aligns with the gene accession number as a point of reference only. However, individual transcript sequences of the same gene can differ through naturally occurring variations (e.g. polymorphisms), each with its own valid existence. This clone is substantially in agreement with the reference, but a complete review of all prevailing variants is recommended prior to use. [More info](#)

OTI Annotation: This clone was engineered to express the complete ORF with an expression tag. Expression varies depending on the nature of the gene.

Components: The ORF clone is ion-exchange column purified and shipped in a 2D barcoded Matrix tube containing 10ug of transfection-ready, dried plasmid DNA (reconstitute with 100 ul of water).

- Reconstitution Method:**
1. Centrifuge at 5,000xg for 5min.
 2. Carefully open the tube and add 100ul of sterile water to dissolve the DNA.
 3. Close the tube and incubate for 10 minutes at room temperature.
 4. Briefly vortex the tube and then do a quick spin (less than 5000xg) to concentrate the liquid at the bottom.
 5. Store the suspended plasmid at -20°C. The DNA is stable for at least one year from date of shipping when stored at -20°C.

RefSeq: [NM_005487.3](#), [NP_005478.2](#)

RefSeq Size: 4220 bp

RefSeq ORF: 1478 bp

Locus ID: 10042

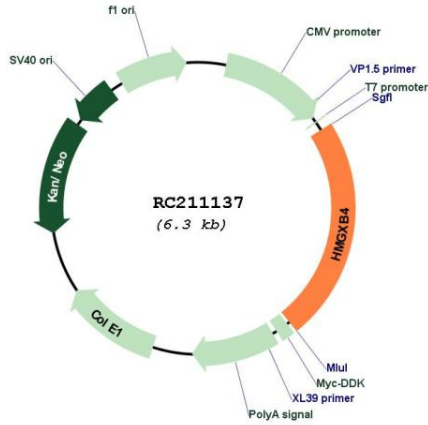
Cytogenetics: 22q12.3

Protein Families: Transcription Factors

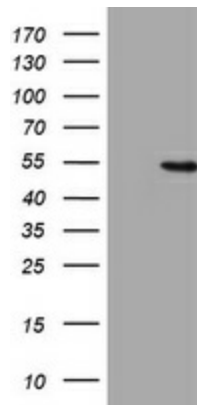
MW: 53.2 kDa

Gene Summary: High mobility group (HMG) proteins are nonhistone chromosomal proteins. See HMG2 (MIM 163906) for additional information on HMG proteins.[supplied by OMIM, Nov 2010]

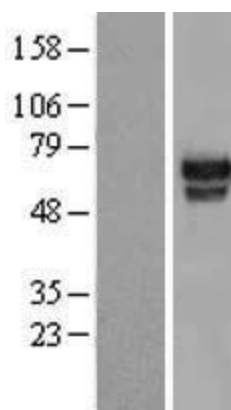
Product images:



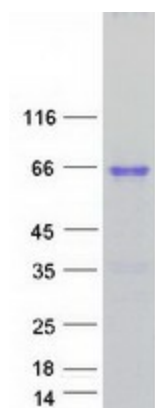
Circular map for RC211137



HEK293T cells were transfected with the pCMV6-ENTRY control (Cat# [PS100001], Left lane) or pCMV6-ENTRY HMGXB4 (Cat# RC211137, Right lane) cDNA for 48 hrs and lysed. Equivalent amounts of cell lysates (5 ug per lane) were separated by SDS-PAGE and immunoblotted with anti-HMGXB4(Cat# [TA801862]). Positive lysates [LY417272] (100ug) and [LC417272] (20ug) can be purchased separately from OriGene.



Western blot validation of overexpression lysate (Cat# [LY415406]) using anti-DDK antibody (Cat# [TA50011-100]). Left: Cell lysates from untransfected HEK293T cells; Right: Cell lysates from HEK293T cells transfected with [RC215726] using transfection reagent MegaTran 2.0 (Cat# [TT210002]).



Coomassie blue staining of purified HMGXB4 protein (Cat# [TP311137]). The protein was produced from HEK293T cells transfected with HMGXB4 cDNA clone (Cat# RC211137) using MegaTran 2.0 (Cat# [TT210002]).