

Product datasheet for RC211133

SNAPC3 (NM_001039697) Human Tagged ORF Clone

Product data:

Product Type:	Expression Plasmids
Product Name:	SNAPC3 (NM_001039697) Human Tagged ORF Clone
Tag:	Myc-DDK
Symbol:	SNAPC3
Synonyms:	PTFbeta; SNAP50
Mammalian Cell Selection:	Neomycin
Vector:	pCMV6-Entry (PS100001)
E. coli Selection:	Kanamycin (25 ug/mL)
ORF Nucleotide Sequence:	>RC211133 ORF sequence Red=Cloning site Blue=ORF Green=Tags(s)

TTTTGTAATACGACTCACTATAGGGCGGCCGGAATTCGTCGACTGGATCCGGTACCGAGGAGATCTGCC
GCC**CGATCGCC**

ATGGCTGAAGGAAGCCGAGGTGGCCCTACGTGTAGCGGGTGGTGGCAGGCAGGACCCAGTCTCCGGCA
GTGGCGGCTGCAACTTCCAGAGTATGAGCTTCCCGAGCTAAATACGCGCGCTTCCATGTGGGCGCCTT
TGGGGAGCTGTGGCGGGCCGTGCGCGGGGCCGGGACTTGTGCTGAGGGAGCCGCCGCATCCGCT
CTGCCTGGGAGCCAGGCAGCTGACTCCGACCGGGAGGATGCCCGGTGGCCAGGGATCTGGACTGCAGCC
TGGAGGCGGGCGGTGAGCTGAGGGCGGTGTGCGGCCTTGATAAACTGAAATGCCTTGAGGACGGTGAGGA
TCCAGAAGTCATTCCGGAGAATACTGACCTGGTACTTTGGGGTTAGAAAAAGTTCTTGGAACATCGG
GAAGAAACCATTACAATAGATCGAGCCTGCAGACAAGAAACATTCGTTTATGAGATGGAGTCACATGCCA
TAGGAAAAAGCCTGAAAATTCAGCAGACATGATTGAAGAAGGGGAGCTTATCCTATCTGTGAATATCTT
GTACCCTGTTATATTTCAAGCACAAGAACACAACCATACCAACAATGCTGGTGTGGCAGTCAA
AAACTCACAACTGAGGGATTCATTCGATGTGTGAGTACCTCCAGATTGGTGGTGAATTCAGCAACA
CTCCTGACCAAGCCCCTGAGCACATCAGCAAAGACCTATACAAATCAGCCTTCTTTATTTGAAGGAAC
ATTTTATAATGATAAAAGATACCCAGAATGCAGAGATTTGAGCAGAATATCATTGAGTGGTCAGAGTCC
CATGATAGAGGCTATGGAAGTTTCAGACTGCTAGAATGGAAGATTTACCTTCAATGACTTGTGTATTA
AACTGGGTTTTCTTACTTATACTGTATCAGGGAGACTGTGAACATGTCATTGTACTGACATAAG
GCTTGTGCATCATGATGACTGCTTGATAGGACATTGTATCCCTCCTTATCAAGAAGCATTGGCTATGG
ACCAGAAAATGTTTTGTTGTAAAATGTATACAGCCAGATGGGTGACGAACAATGACAGTTTTGCACCAG
AGGACCCATGCTTCTTTGTGATGTTGCTTCCGAATGCTGCACTATGATTCAGAAGGCAACAACTGGG
GGAATTCCTGCTTATCCTTATGTTGATCCTGGAACCTTAAAT

ACGGTACGCGGCCGCTCGAGCAGAACTCATCTCAGAAGAGGATCTGGCAGCAATGATATCCTGGATT
ACAAGGATGACGACGATAAGGTTTAA



[View online »](#)

Protein Sequence: >RC211133 protein sequence
Red=Cloning site Green=Tags(s)

MAEGSRGGPTCSGVGGRQDPVSGSGGCNFPYELPELNTRAFHVGAFGELWRGRLRGAGDLSLREPPASA
 LPGSQAADSDREDAAVARDLDCSLEAAAELRAVCGLDKLCLEDGEDPEVIPENTDLVTLGVRKRFLEHR
 EETITIDRACRQETFVYEMESHAIGKKPENSADMIEEGELILSVNILYPVIFHKHKEHKPYQTMLVLGSQ
 KLTQLRDSIRCVDLQIGGEFSNTPDQAPEHISKDLYKSAFFYFEGTFYNDKRYPECRDLSRTIIIEWS
 HDRGYGKFQTARMEDFTFNDLCIKLGFPYLYCHQGDCEHVIVITDIRLVHDDCLDRTL YPLL IKKHHLW
 TRKCFVCKMYTARWVTNNSDFAPEDPCFFCDVCFRMLHYDSEGNKLGFLAYPYVDPGTFN

TRTRPLEQKLISEEDLAANDILDYKDDDDKV

Chromatograms: https://cdn.origene.com/chromatograms/mk6585_d10.zip

Restriction Sites: SgfI-MluI

Cloning Scheme:



* The last codon before the Stop codon of the ORF

ACCN: NM_001039697

ORF Size: 1233 bp

OTI Disclaimer: The molecular sequence of this clone aligns with the gene accession number as a point of reference only. However, individual transcript sequences of the same gene can differ through naturally occurring variations (e.g. polymorphisms), each with its own valid existence. This clone is substantially in agreement with the reference, but a complete review of all prevailing variants is recommended prior to use. [More info](#)

OTI Annotation: This clone was engineered to express the complete ORF with an expression tag. Expression varies depending on the nature of the gene.

Components: The ORF clone is ion-exchange column purified and shipped in a 2D barcoded Matrix tube containing 10ug of transfection-ready, dried plasmid DNA (reconstitute with 100 ul of water).

Reconstitution Method:

1. Centrifuge at 5,000xg for 5min.
2. Carefully open the tube and add 100ul of sterile water to dissolve the DNA.
3. Close the tube and incubate for 10 minutes at room temperature.
4. Briefly vortex the tube and then do a quick spin (less than 5000xg) to concentrate the liquid at the bottom.
5. Store the suspended plasmid at -20°C. The DNA is stable for at least one year from date of shipping when stored at -20°C.

RefSeq: [NM_001039697.1](#), [NP_001034786.1](#)

RefSeq Size: 3095 bp

RefSeq ORF: 1236 bp

Locus ID: 6619

UniProt ID: [Q92966](#)

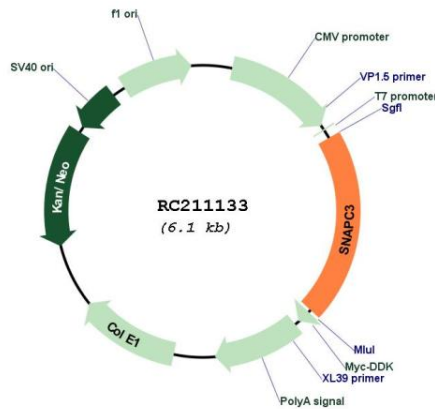
Cytogenetics: 9p22.3

Protein Families: Transcription Factors

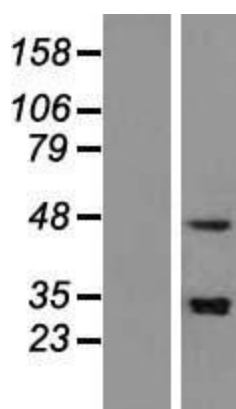
MW: 46.8 kDa

Gene Summary: Part of the SNAPc complex required for the transcription of both RNA polymerase II and III small-nuclear RNA genes. Binds to the proximal sequence element (PSE), a non-TATA-box basal promoter element common to these 2 types of genes. Recruits TBP and BRF2 to the U6 snRNA TATA box.[UniProtKB/Swiss-Prot Function]

Product images:



Circular map for RC211133



Western blot validation of overexpression lysate (Cat# [LY421891]) using anti-DDK antibody (Cat# [TA50011-100]). Left: Cell lysates from untransfected HEK293T cells; Right: Cell lysates from HEK293T cells transfected with RC211133 using transfection reagent MegaTran 2.0 (Cat# [TT210002]).