

## Product datasheet for RC211131

### MTCH1 (NM\_014341) Human Tagged ORF Clone

#### Product data:

Product Type:	Expression Plasmids
Product Name:	MTCH1 (NM_014341) Human Tagged ORF Clone
Tag:	Myc-DDK
Symbol:	MTCH1
Synonyms:	CGI-64; PIG60; PSAP; SLC25A49
Mammalian Cell Selection:	Neomycin
Vector:	pCMV6-Entry (PS100001)
E. coli Selection:	Kanamycin (25 ug/mL)
ORF Nucleotide Sequence:	>RC211131 ORF sequence Red=Cloning site Blue=ORF Green=Tags(s)

TTTTGTAATACGACTCACTATAGGGCGGCCGGAATTCGTCGACTGGATCCGGTACCGAGGAGATCTGCC  
GCC**CGATCGC**C

ATGGGAGCTTCGGACCCGGAAGTGGCGCCTGGGCTCGCGGGGTGCCGCGGGATGGCGGGAGCCGGAG  
CTGGAGCCGGAGCTCGCGCGGAGCGCGCGGGGTGCGAGGCTCGAGCTCGCGATCCACCGCCCGCGCA  
CCGCGCACATCTCGCCACCCTCGGCTCGGGCTCAGCCCTCGGCCCGCAGGATGGATGGCGGGTCAGGG  
GGCCTGGGGTCTGGGGACAACGCCCGACCACTGAGGCTCTTTTCGTGGCACTGGCGCGGGCGTGACGG  
CGCTCAGCCATCCCCTGCTCTACGTGAAGCTGCTCATCCAGGTGGTTCATGAGCCGATGCCCCACCCT  
TGGGACCAATGTGCTGGGGAGGAAGTCTCTATCTGCCGAGCTTCTCACCTACGCCAAGTACATCGTG  
CAAGTGGATGGTAAGATAGGGCTGTTCCGAGGCCTGAGTCCCGGCTGATGTCCAACGCCCTCTCTACTG  
TGACTCGGGTAGCATGAAGAAGTTTTCCCTCCAGATGAGATTGAGCAGGTTTCCAACAAGGATGATAT  
GAAGACTTCCCTGAAGAAAGTTGTGAAGGAGACCTCCTACGAGATGATGATGCAGTGTGTGCCGCATG  
TTGGCCACCCCTGCATGTCTCAATGCGCTGCATGGTCCAGTTTGTGGGACGGGAGGCCAAGTACA  
GTGGTGTGCTGAGCTCCATTGGGAAGATTTTCAAAGAGGAAGGGCTGCTGGGATCTTTCGTTGGATTAAT  
CCCTCACCTCCTGGGCGATGTGGTTTTCTGTGGGGCTGTAACCTGCTGGCCACTTCATCAATGCCTAC  
CTGGTGGATGACAGCTTCAGCCAGGCCCTGGCCATCCGGAGCTATACCAAGTTCTGATGGGGATTGCGAG  
TGAGCATGCTGACCTACCCCTTCTGCTAGTTGGCGACCTCATGGCTGTGAACAACCTGCGGGCTGCAAGC  
TGGGCTCCCCCTTACTCCCCAGTGTTCAAATCCTGGATTCACTGCTGGAAGTACCTGAGTGTGCAGGGC  
CAGCTCTCCGAGGCTCCAGCCTGCTTTCCGCGGGTGTTCATCAGGATCATGCTTTCCTGGAT

**ACGCGT**ACGCGGCCGCTCGAGCAGAACTCATCTCAGAAGAGGATCTGGCAGCAATGATATCCTGGATT  
ACAAGGATGACGACGATAAGGTTAA



[View online »](#)

**Protein Sequence:** >RC211131 protein sequence  
Red=Cloning site Green=Tags(s)

MGASDPEVAPWARGGAAGMAGAGAGAGARGGAAAGVEARARDPPPAHRAHPRHPRPAAQPSARRMDGGSG  
 GLGSGDNAPTTEALFVALGAGVTALSHPLLIVKLLIQVGHEPMPPTLGTNVLGRKVL YLPSFFTYAKYIV  
 QVDGKIGLFRGLSPRLMSNALSTVTRGSMKKVFPPEIEQVSNKDDMKTSLKKVVKETSYEMMMQCVSRM  
 LAHPLHVISMRCMVQFVGREAKYSGVLSIGKIFKEEGLLGFFVGLIPHLLGDVVFLWGCNLLAHFINAY  
 LVDDSFSQLAIRSYTKFVMGIAVSM LYPFLLVGDLMAVNNGCLQAGLPPYSPVFKSWIHCWKYLSVQG  
 QLFRGSSLLFRRVSSGSCFALE

TRTRPLEQKLISEEDLAANDILDYKDDDDKVK

**Chromatograms:** [https://cdn.origene.com/chromatograms/mk6215\\_e03.zip](https://cdn.origene.com/chromatograms/mk6215_e03.zip)

**Restriction Sites:** SgfI-MluI

**Cloning Scheme:**



\* The last codon before the Stop codon of the ORF

**ACCN:** NM\_014341

**ORF Size:** 1116 bp

**OTI Disclaimer:** The molecular sequence of this clone aligns with the gene accession number as a point of reference only. However, individual transcript sequences of the same gene can differ through naturally occurring variations (e.g. polymorphisms), each with its own valid existence. This clone is substantially in agreement with the reference, but a complete review of all prevailing variants is recommended prior to use. [More info](#)

**OTI Annotation:** This clone was engineered to express the complete ORF with an expression tag. Expression varies depending on the nature of the gene.

**Components:** The ORF clone is ion-exchange column purified and shipped in a 2D barcoded Matrix tube containing 10ug of transfection-ready, dried plasmid DNA (reconstitute with 100 ul of water).

**Reconstitution Method:**

1. Centrifuge at 5,000xg for 5min.
2. Carefully open the tube and add 100ul of sterile water to dissolve the DNA.
3. Close the tube and incubate for 10 minutes at room temperature.
4. Briefly vortex the tube and then do a quick spin (less than 5000xg) to concentrate the liquid at the bottom.
5. Store the suspended plasmid at -20°C. The DNA is stable for at least one year from date of shipping when stored at -20°C.

**Note:** Plasmids are not sterile. For experiments where strict sterility is required, filtration with 0.22um filter is required.

**RefSeq:** [NM\\_014341.2](#)

**RefSeq Size:** 2283 bp

**RefSeq ORF:** 1119 bp

**Locus ID:** 23787

**UniProt ID:** [Q9NZJ7](#)

**Cytogenetics:** 6p21.2

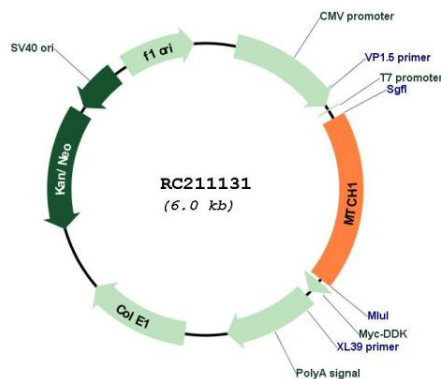
**Domains:** mito\_carr

**Protein Families:** Transmembrane

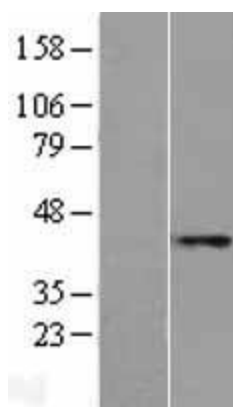
**MW:** 39.9 kDa

**Gene Summary:** This gene encodes a member of the mitochondrial carrier family. The encoded protein is localized to the mitochondrion inner membrane and induces apoptosis independent of the proapoptotic proteins Bax and Bak. Pseudogenes on chromosomes 6 and 11 have been identified for this gene. Alternatively spliced transcript variants encoding multiple isoforms have been observed. [provided by RefSeq, Oct 2012]

### Product images:



Circular map for RC211131



Western blot validation of overexpression lysate (Cat# [LY415343]) using anti-DDK antibody (Cat# [TA50011-100]). Left: Cell lysates from untransfected HEK293T cells; Right: Cell lysates from HEK293T cells transfected with RC211131 using transfection reagent MegaTran 2.0 (Cat# [TT210002]).