

## Product datasheet for **RC211129**

### **IRX4 (NM\_016358) Human Tagged ORF Clone**

#### **Product data:**

Product Type:	Expression Plasmids
Product Name:	IRX4 (NM_016358) Human Tagged ORF Clone
Tag:	Myc-DDK
Symbol:	IRX4
Synonyms:	IRXA3
Mammalian Cell Selection:	Neomycin
Vector:	pCMV6-Entry (PS100001)
E. coli Selection:	Kanamycin (25 ug/mL)



[View online »](#)

**ORF Nucleotide Sequence:**

>RC211129 representing NM\_016358  
 Red=Cloning site Blue=ORF Green=Tags(s)

TTTTGTAATACGACTCACTATAGGGCGGCCGGAATTCGTCGACTGGATCCGGTACCGAGGAGATCTGCC  
 GCC**GCGATCGCC**

ATGTCCTACCCGAGTTTGGATACCCCTACTCCTCGGCTCCCGAGTTCTTGATGGCCACCAACTCCCTGA  
 GCACGTGCTGCGAGTCCGAGGCCGACAGCTGGCGGACTCCGGGCCCGCGCCTCGGCCAGGCGCCGGT  
 CTAAGTCCCGGTCTACGAGAGCCGGCTGCTGGCCACCGCGGCCACGAGCTCAACTCGGCCGCGGCGCTG  
 GGCGTCTATGGGGTCCCTATGGCGGATCGCAGGGCTATGGCAACTACGTGACCTACGGCTCGGAGGCGT  
 CCGCCTTCTACTCGTGAACAGCTTTGATTCCAAGGATGGTTCGGGATCTGCGCATGGGGCCTGGCACC  
 AGCCACTGCCCTACTACCTTACGAGCCAGCTCTGGCCAGTACCCCTATGACAGGTATGGAACCATG  
 GACAGCGGCACGCGGCAAGAACGCCACGCGGAGACCACGACGCTCAAGGCTGGCTGCAGGAGC  
 ACCGAAGAACCCTACCCACCAAGGGCGAGAAGATCATGCTGGCCATCATACCAAGATGACCCTCAC  
 ACAGTCTCCACCTGGTTCGCCAACGCGCGCCGCGCCTCAAGAAGGAGAACAAGATGACGTGGCCGCCG  
 CGGAACAAGTGGCAGACGAGAAGCGGCCCTACGCGGAGGGCGAGGAGGAGGGGGGCGAGGAGGAGG  
 CGCGGGAGGAGCCCTCAAGAGCTCCAAGAACGCAGAGCCCGTGGGCAAAGAGGAGAAGGAGCTGGAGCT  
 TAGTGACTTGGACGACTTCGACCCGCTGGAAGCAGAGCCCGCGCGTGGCAGCTGAAGCCGCCCTCCAC  
 TCCCTGGACGGCGGTCTGGAGCGCTCCCGCGCGCCGACGGCCCGTCAAGGAGGCCTCAGGCGCGC  
 TCCGGATGTCTCTGGCCGCGGTGGCGGAGTGTCTGGACGAGGACCTGGAGAGGGCCCGGAGCTGTCT  
 CCGCAGCGCGGCGCGGGCCGGAGCCACTGCCGGCGCAGAGGGCGGCCCTCAGTCTGCGAGGCCAAG  
 CTGGGGTTGTGCCGGCGGGGCGTGGCAGGCTGGAGGCTAAGCCGCGCATCTGGTCCCTGGCCACA  
 CAGCCACCGCGCCCGCCCGCCCACTCCCTGAGCCAGACTGAGTTCCGTCGTGCATGCTCCACG  
 CCAAGTCCCGCGGCCCTGCGGCTGTCTCCTCGCGCCCGCCACGTCCTCCGTCGTGGCCCTCCCCAC  
 TCTGGCGCCTGGACAGGACCAGGACTCCCGGTAACAGTCTCAGAACTGGGTGGACGGGTCTTCC  
 ACGACCCCATCTCAGGCACAGCACTTTGAACAGGCCTGGGCCACCGCAAGGGCGCCCTCCTGGACCC  
 CGGGCCTCTGGACGCTCGTGGGGGCGGGCGCAACGTGCTGACTGCACCCCTGGCCGCGCCTTCCG  
 CCTGCCGTGCCCCAGGACGCCAGCTGCAGGCGCGCCAGGAGCTGCTCGCCGCCCCAAGGCCGGCG  
 GCAAACCTTCTGCGCC

**ACGCGT**ACGCGGCCGCTCGAGCAGAACTCATCTCAGAAGAGGATCTGGCAGCAAATGATATCCTGGATT  
 ACAAGGATGACGACGATAAGGTTTAA

**Protein Sequence:**

>RC211129 representing NM\_016358  
 Red=Cloning site Green=Tags(s)

MSYPQFGYPYSSAPQFLMATNSLSTCCESGGRTLADSGPAASAQAPVYCPVYESRLLATARHELNSAAAL  
 GYVGGPYGGSQGYGNYVTYGSEASAFYSLNSFSDKDGSGSAHGGLAPATAAYYPYEPALGQYPYDRYGM  
 DSGTRRNATRETTSTLKAWLQEHKPNPYPTKGEKIMLAIITKMTLTQVSTWFANARRRLKKNKMTWPP  
 RNKCADEKRPYAEGEEEEGEEEEAREEPLKSSKNAEPVGKEEKELELSDLDLDFPLEAEPACELKPPFH  
 SLDGGLERVPAAPDPVKEASGALRMSLAAGGGAALDEDLERARSCLRSAAAGPEPLPGAEGGPQVCEAK  
 LGFVPAGASAGLEAKPRIWLAHTATAAAAAATSLSQTEFPSCMLKRQPAAPAAVSSAPATSPSVALPH  
 SGALDRHQDSPVTSLRNWDVGVFHDPILRHSTLNQAWATAKGALLDPGPLGRSLGAGANVLTAPLARAFP  
 PAVPQDAPAAGAARELLALPKAGGKPFCA

**TRTRPLEQKLI**SEEDLAANDILDYKDDDDKV

**Chromatograms:**

[https://cdn.origene.com/chromatograms/mg2919\\_h09.zip](https://cdn.origene.com/chromatograms/mg2919_h09.zip)

**Restriction Sites:**

SgfI-MluI

**Cloning Scheme:**

Cloning sites used for ORF Shuttling:



\* The last codon before the Stop codon of the ORF

**ACCN:** NM\_016358

**ORF Size:** 1557 bp

**OTI Disclaimer:** The molecular sequence of this clone aligns with the gene accession number as a point of reference only. However, individual transcript sequences of the same gene can differ through naturally occurring variations (e.g. polymorphisms), each with its own valid existence. This clone is substantially in agreement with the reference, but a complete review of all prevailing variants is recommended prior to use. [More info](#)

**OTI Annotation:** This clone was engineered to express the complete ORF with an expression tag. Expression varies depending on the nature of the gene.

**Components:** The ORF clone is ion-exchange column purified and shipped in a 2D barcoded Matrix tube containing 10ug of transfection-ready, dried plasmid DNA (reconstitute with 100 ul of water).

**Reconstitution Method:**

1. Centrifuge at 5,000xg for 5min.
2. Carefully open the tube and add 100ul of sterile water to dissolve the DNA.
3. Close the tube and incubate for 10 minutes at room temperature.
4. Briefly vortex the tube and then do a quick spin (less than 5000xg) to concentrate the liquid at the bottom.
5. Store the suspended plasmid at -20°C. The DNA is stable for at least one year from date of shipping when stored at -20°C.

**RefSeq:** [NM\\_016358.3](#)
**RefSeq Size:** 2212 bp

**RefSeq ORF:** 1560 bp

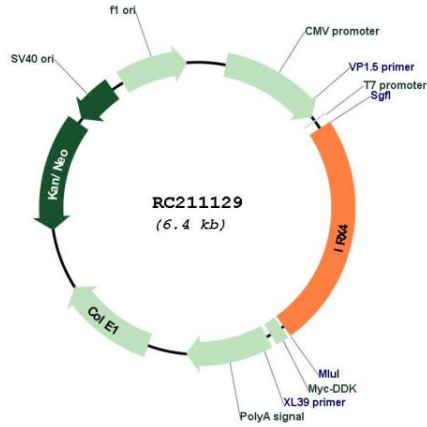
**Locus ID:** 50805

**UniProt ID:** [P78413](#)
**Cytogenetics:** 5p15.33

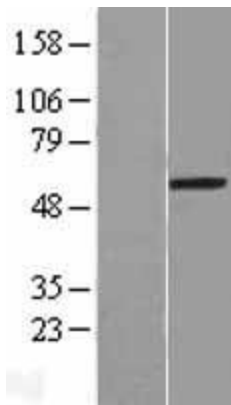
**MW:** 54.3 kDa

**Gene Summary:** Likely to be an important mediator of ventricular differentiation during cardiac development. [UniProtKB/Swiss-Prot Function]

**Product images:**



Circular map for RC211129



Western blot validation of overexpression lysate (Cat# [LY414026]) using anti-DDK antibody (Cat# [TA50011-100]). Left: Cell lysates from untransfected HEK293T cells; Right: Cell lysates from HEK293T cells transfected with RC211129 using transfection reagent MegaTran 2.0 (Cat# [TT210002]).