

## Product datasheet for RC211128

### FAHD2A (NM\_016044) Human Tagged ORF Clone

#### Product data:

Product Type:	Expression Plasmids
Product Name:	FAHD2A (NM_016044) Human Tagged ORF Clone
Tag:	Myc-DDK
Symbol:	FAHD2A
Synonyms:	CGI-105
Mammalian Cell Selection:	Neomycin
Vector:	pCMV6-Entry (PS100001)
E. coli Selection:	Kanamycin (25 ug/mL)
ORF Nucleotide Sequence:	>RC211128 ORF sequence Red=Cloning site Blue=ORF Green=Tags(s)

TTTTGTAATACGACTCACTATAGGGCGGCCGGAATTCGTCGACTGGATCCGGTACCGAGGAGATCTGCC  
GCC**CGGATCGCC**

ATGCTGGTGTCTGGTAGAAGAAGGTTACTCACAGTTCTGCTGCAGGCTCAGAAGTGGCCCTTCAACCC  
CCAGAGACATGAGACTAGTGCAGTTCGGGCACCCACCTGGTGGGGCCTCACTTGGGCCTGGAGACAGG  
GAATGGTGGAGGGTTATCAACCTCAATGCCTTTGACCCACACTCCGAAGACGATGACGCAGTTCCTA  
GAGCAGGGAGAGGCCACCCTCTCAGTGGCAAGAAGAGCCCTGGCTGCCAGTTGCCAGTCTACCACGGT  
CGGAGGTAACCTTCTGGCTCCAGTCACACGACCAGATAAAGTGGTGTGTGGGCATGAATTATGTGGA  
CCACTGCAAAGAACAGAACGTGCCCGTGCCCAAGGAGCCCATCATCTTACGAAGTTTGGCAGCTCCATC  
GTGGGGCCCTATGATGAGGTGGTCTCCACCACAGAGCCAGGAGGTAGATTGGGAAGTGGAGCTGGCCG  
TGGTCATTGAAAAGAAAGGCAAGCACATCAAGGCCACAGATGCTATGGCCACAGTGGCCGGCTTCACTGT  
GGCTCATGACGTGAGTGCCTGCTGACTGGCAATGAGACGTAATGGGAAACAATGGCTGCTGGGAAAAAC  
TTCGACACCTTCTGCCCTCTGGGCCCTGCCTTGGTGACCAAGGACAGTGTAGCAGATCCACACACTTAA  
AGATCTGCTGCCGAGTGAATGGGAAGTGGTCCAGAGCGGCAACCAACCAGATGGTATTCAAGACAGA  
GGACCTGATAGCCTGGGTCTCCAGTTTGTACCTTTTACCCAGGGGATGTCATCCTAACTGGGACCC  
CCAGGTGTCGGTGTATTACAGAAACCTCCTGTCTTCTCAAGAAGGGGGATGAAGTCCAGTGTGAGATTG  
AAGAACTAGGTGTCATCATCAACAAGGTGGT

**ACGCGT**ACGCGGCCGCTCGAGCAGAAACTCATCTCAGAAGAGGATCTGGCAGCAATGATATCCTGGATT  
ACAAGGATGACGACGATAAGGTTTAA



[View online »](#)

**Protein Sequence:** >RC211128 protein sequence  
Red=Cloning site Green=Tags(s)

MLVSGRRRLT VLLQAQKWPFPQSRDMRLVQFRAPHLVGPLHGLETGNGGGVINLNAFDPTLPKMTQFL  
 EQGEATLSVARRALAAQLPVLPRSEVTF LAPVTRPDKVVCVMNYVDHCKEQNVPVPKEPIIFSKFASSI  
 VGPYDEVVLPQSQEVDWEVELAVVIGKKGKHKATDAMAHVAGFTVAHDVSARDWQMRNGKQWLLGKT  
 FDTFCPLGPALVTKDSVADPHNLKICCRVNGEVVQSGNTNQMFVKTEDLIAWVSQFVTFYPGDVILTGTP  
 PGVGVFRKPPVFLKKGDEVQCEIEELGVIINKVV

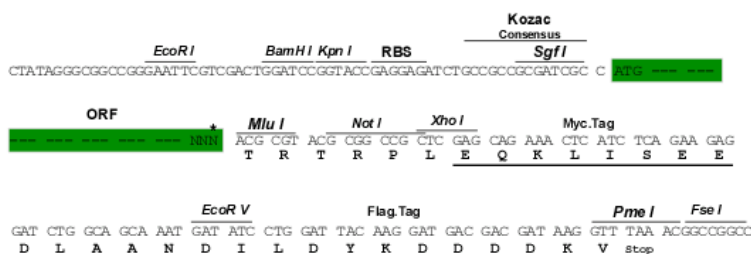
TRTRPLEQKLISEEDLAANDILDYKDDDDKV

**Chromatograms:** [https://cdn.origene.com/chromatograms/mk6006\\_d07.zip](https://cdn.origene.com/chromatograms/mk6006_d07.zip)

**Restriction Sites:** SgfI-MluI

**Cloning Scheme:**

Cloning sites used for ORF Shuttling:



\* The last codon before the Stop codon of the ORF

**ACCN:** NM\_016044

**ORF Size:** 942 bp

**OTI Disclaimer:** The molecular sequence of this clone aligns with the gene accession number as a point of reference only. However, individual transcript sequences of the same gene can differ through naturally occurring variations (e.g. polymorphisms), each with its own valid existence. This clone is substantially in agreement with the reference, but a complete review of all prevailing variants is recommended prior to use. [More info](#)

**OTI Annotation:** This clone was engineered to express the complete ORF with an expression tag. Expression varies depending on the nature of the gene.

**Components:** The ORF clone is ion-exchange column purified and shipped in a 2D barcoded Matrix tube containing 10ug of transfection-ready, dried plasmid DNA (reconstitute with 100 ul of water).

**Reconstitution Method:**

1. Centrifuge at 5,000xg for 5min.
2. Carefully open the tube and add 100ul of sterile water to dissolve the DNA.
3. Close the tube and incubate for 10 minutes at room temperature.
4. Briefly vortex the tube and then do a quick spin (less than 5000xg) to concentrate the liquid at the bottom.
5. Store the suspended plasmid at -20°C. The DNA is stable for at least one year from date of shipping when stored at -20°C.

**RefSeq:** [NM\\_016044.3](#)

**RefSeq Size:** 1313 bp

**RefSeq ORF:** 945 bp

**Locus ID:** 51011

**UniProt ID:** [Q96GK7](#)

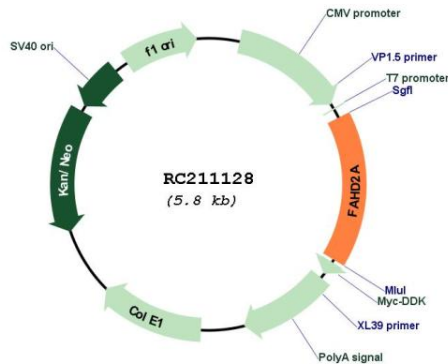
**Cytogenetics:** 2q11.1

**Domains:** FAA\_hydrolase

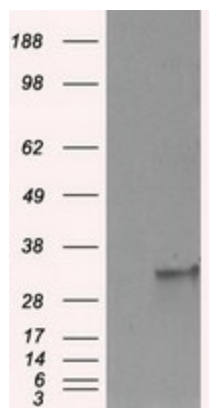
**MW:** 34.6 kDa

**Gene Summary:** May have hydrolase activity.[UniProtKB/Swiss-Prot Function]

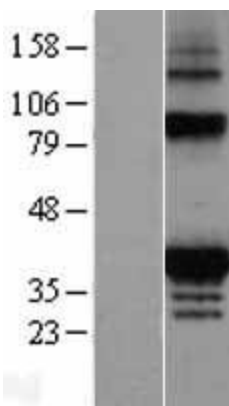
**Product images:**



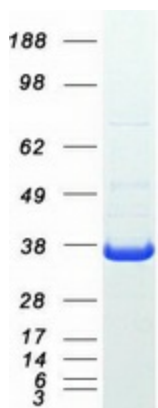
Circular map for RC211128



HEK293T cells were transfected with the pCMV6-ENTRY control (Cat# [PS100001], Left lane) or pCMV6-ENTRY FAHD2A (Cat# RC211128, Right lane) cDNA for 48 hrs and lysed. Equivalent amounts of cell lysates (5 ug per lane) were separated by SDS-PAGE and immunoblotted with anti-FAHD2A (Cat# [TA500939]). Positive lysates [LY402492] (100ug) and [LC402492] (20ug) can be purchased separately from OriGene.



Western blot validation of overexpression lysate (Cat# [LY402492]) using anti-DDK antibody (Cat# [TA50011-100]). Left: Cell lysates from untransfected HEK293T cells; Right: Cell lysates from HEK293T cells transfected with RC211128 using transfection reagent MegaTran 2.0 (Cat# [TT210002]).



Coomassie blue staining of purified FAHD2A protein (Cat# [TP311128]). The protein was produced from HEK293T cells transfected with FAHD2A cDNA clone (Cat# RC211128) using MegaTran 2.0 (Cat# [TT210002]).