

## Product datasheet for **RC211127**

### **gamma Tubulin (TUBG2) (NM\_016437) Human Tagged ORF Clone**

#### **Product data:**

Product Type:	Expression Plasmids
Product Name:	gamma Tubulin (TUBG2) (NM_016437) Human Tagged ORF Clone
Tag:	Myc-DDK
Symbol:	gamma Tubulin
Mammalian Cell Selection:	Neomycin
Vector:	pCMV6-Entry (PS100001)
E. coli Selection:	Kanamycin (25 ug/mL)



[View online »](#)

**ORF Nucleotide Sequence:**

>RC211127 ORF sequence  
 Red=Cloning site Blue=ORF Green=Tags(s)

TTTTGTAATACGACTCACTATAGGGCGGCCGGGAATTCGTCGACTGGATCCGGTACCGAGGAGATCTGCC  
 GCC**GCGATCGCC**

ATGCCCGGGAGATCATCACCTGCAGCTGGGCCAGTGCGGCAACCAGATTGGGTTTCGAGTTCTGGAAC  
 AGCTGTGCGCCGAGCATGGTATCAGCCCGAGGGCATCGTGGAGGAATTCGCCACCGAGGGCACTGACCG  
 CAAGGACGTCTTTTTCTACCAGGCAGACGATGAGCACTACATCCCCGGGCGTGTCTGGACTTGAA  
 CCCCAGGATCCACTCCATCCTCAACTCCCCCTATGCCAAGCTCTACAACCCAGAGAACATCTACCTGT  
 CGGAACATGGAGGAGGAGCTGGCAAACTGGGCCAGCGGATTCTCCAGGGTGAGAAAATTCATGAAGA  
 CATCTTTGACATCATAGACCGAGAAGCAGATGGAAGTGACAGTTTGGAGGGCTTCGTGTGTCTACTCC  
 ATCGTGGGGTACGGTTCTGGCTGGCTCCTACCTCTGGAGCGACTGAATGACAGGTACCCCAAGA  
 AGCTAGTGCAGACTTATTCAGTGTTCCTACCAGGACGAGATGAGCGACGTAGTGGTTCAGCCCTACAA  
 TTCCTCTGACTCAAGAGGCTGACGCAGAACGAGATTGTGTGGTGGTGTGGACAACACAGCCCTG  
 AACCGGATTGCCACAGACCGCTGCACATCCAGAACCCGCTCTTCTCCAGATCAACCAGCTGGTGTCCA  
 CCATCATGTCCGGCCAGCACCACCACCTGCGCTACCCCGCTACATGAACAATGACCTCATCGGCCCTCAT  
 CGCTCGCTATTCCCACCCACGGCTCCACTTCTCATGACCGCTACACCCCGCTCACTACAGACCAG  
 TCAGTGGCCAGCGTGAGGAAGACCACGGTCTGGATGTCATGAGGCGGCTGTGCAGCCCAAGAACGTGA  
 TGGTGTCCACAGGCCGAGACCGCCAGACCAACCACTGCTACATCGCCATCTCAACATCATCCAGGGAGA  
 GGTGGACCCACCCAGGTCCACAAGAGCCTGCAGAGGATCCGGGAACGGAAGTTGGCCAACCTCATCCCG  
 TGGGGCCCGCCAGCATCCAGGTGGCCCTGTGAGGAAGTCTCCCTACCTGCCCTCGGCCACCGGGTCA  
 GCGGGCTCATGATGGCCAACACACAGCATCTCCTCGCTCTTTGAAAGTTCCTGCCAGCAGTTTGACAA  
 GCTGCGGAAGCGGATGCCTTCTCGAGCAGTTCGTAAGGAGGACATGTTCAAGGACAACCTTTCATGAG  
 ATGGACAGGTCTAGGGAGTTGTTTCAGGAGCTCATTGATGAGTACCATGCGGCCACCCAGCCAGACTACA  
 TTTCTGGGGCACCCAGGAGCAG

**ACGCGT**ACGCGGCCGCTCGAGCAGAACTCATCTCAGAAGAGGATCTGGCAGCAAATGATATCCTGGATT  
 ACAAGGATGACGACGATAAGGTTTAA

**Protein Sequence:**

>RC211127 protein sequence  
 Red=Cloning site Green=Tags(s)

MPREIITLQLGQCGNQIGFEFWKQLCAEHGISPEGIVEEFATEGTDKDVFFYQADDEHYIPRAVLLDLE  
 PRVIHSILNSPYAKLYNPENIYLSEHGGGAGNNWASGFSQGEKIHEDIFDIIDREADGSDSLEGFVLS  
 IAGGTGSLGYSYLLERLNDRYPKLVQYTSVFPYQDEMSDVVVQPYNSLLTLKRLTQNADCVVLDNTAL  
 NRIATDRLHIQNPSFSQINQLVSTIMSASTTLRYPGYMNNDLIGLIASLIPTPRLHFLMTGYTPTLTDQ  
 SVASVRKTTVLDMRRLLPKNVMVSTGRDRQTNHCYIAILNIIQGEVDPTQVHKSQRIRERKLANFIP  
 WGPASIQVALSRKSPYLPSAHRVSGLMANHTSISSESSCQFQDKLRKRAFLEQFRKEDMFKDNFDE  
 MDRSREVVQELIDEYHAATQPDYISWGTQEQ

**TR**TRPLEQKLISEEDLAANDILDYKDDDDKV

**Chromatograms:**

[https://cdn.origene.com/chromatograms/mk6378\\_e05.zip](https://cdn.origene.com/chromatograms/mk6378_e05.zip)

**Restriction Sites:**

Sgfl-Mlul

Cloning Scheme:



ACCN: NM\_016437

ORF Size: 1353 bp

OTI Disclaimer: The molecular sequence of this clone aligns with the gene accession number as a point of reference only. However, individual transcript sequences of the same gene can differ through naturally occurring variations (e.g. polymorphisms), each with its own valid existence. This clone is substantially in agreement with the reference, but a complete review of all prevailing variants is recommended prior to use. [More info](#)

OTI Annotation: This clone was engineered to express the complete ORF with an expression tag. Expression varies depending on the nature of the gene.

Components: The ORF clone is ion-exchange column purified and shipped in a 2D barcoded Matrix tube containing 10ug of transfection-ready, dried plasmid DNA (reconstitute with 100 ul of water).

Reconstitution Method:

1. Centrifuge at 5,000xg for 5min.
2. Carefully open the tube and add 100ul of sterile water to dissolve the DNA.
3. Close the tube and incubate for 10 minutes at room temperature.
4. Briefly vortex the tube and then do a quick spin (less than 5000xg) to concentrate the liquid at the bottom.
5. Store the suspended plasmid at -20°C. The DNA is stable for at least one year from date of shipping when stored at -20°C.

RefSeq: [NM\\_016437.3](#)

RefSeq Size: 1841 bp

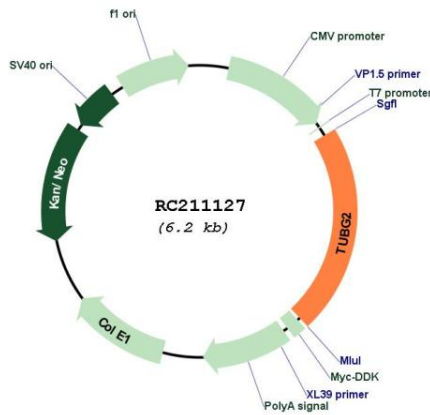
RefSeq ORF: 1356 bp

Locus ID: 27175

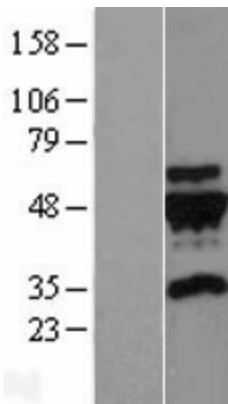
UniProt ID: [Q9NRH3](#)

**Cytogenetics:** 17q21.2  
**Domains:** tubulin  
**Protein Families:** Druggable Genome  
**MW:** 51.1 kDa  
**Gene Summary:** Tubulin is the major constituent of microtubules. The gamma chain is found at microtubule organizing centers (MTOC) such as the spindle poles or the centrosome. Pericentriolar matrix component that regulates alpha/beta chain minus-end nucleation, centrosome duplication and spindle formation (By similarity).[UniProtKB/Swiss-Prot Function]

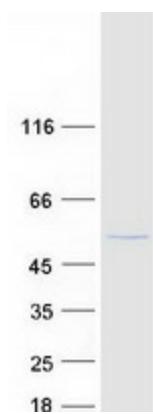
**Product images:**



Circular map for RC211127



Western blot validation of overexpression lysate (Cat# [LY414021]) using anti-DDK antibody (Cat# [TA50011-100]). Left: Cell lysates from untransfected HEK293T cells; Right: Cell lysates from HEK293T cells transfected with RC211127 using transfection reagent MegaTran 2.0 (Cat# [TT210002]).



Coomassie blue staining of purified TUBG2 protein (Cat# [TP311127]). The protein was produced from HEK293T cells transfected with TUBG2 cDNA clone (Cat# RC211127) using MegaTran 2.0 (Cat# [TT210002]).