

Product datasheet for **RC211123**

PARP6 (NM_020214) Human Tagged ORF Clone

Product data:

Product Type:	Expression Plasmids
Product Name:	PARP6 (NM_020214) Human Tagged ORF Clone
Tag:	Myc-DDK
Symbol:	PARP6
Synonyms:	ARTD17; PARP-6-B1; PARP-6-C; pART17
Mammalian Cell Selection:	Neomycin
Vector:	pCMV6-Entry (PS100001)
E. coli Selection:	Kanamycin (25 ug/mL)



[View online »](#)

ORF Nucleotide Sequence:

>RC211123 ORF sequence
 Red=Cloning site Blue=ORF Green=Tags(s)

TTTTGTAATACGACTCACTATAGGGCGGCCGGAATTCGTCGACTGGATCCGGTACCGAGGAGATCTGCC
 GCC**CGATCGCC**

ATGGACATCAAAGGCCAGTTCTGGAATGATGACGACTCGGAGGGAGATAATGAATCAGAGGAATTTCTCT
 ATGGCGTTCAGGGGAGCTGTGCAGCTGACCTGTATCGACACCCACAGCTTGATGCAGACATTGAAGCCGT
 GAAGGAGATCTACAGTGAGAAGCTGTATCCATCAGAGAATATGGAAGTATCGATGACGTGGACATTGAC
 CTCCACATCAACATCAGCTTCTCGATGAGGAAGTCTCTACAGCCTGGAAGGTCCTCCGGACAGAACCTA
 TTGTGTTGAGGCTGCGATTTTCTCTCCAGTACCTAGATGGACCAGAACCATCCATTGAGGTTTTCCA
 GCCATCAAATAAGGAAGGATTTGGGCTGGGTCTTCAGTTGAAAAAGATCCTGGGTATGTTTACATCCCAA
 CAATGGAACATCTGAGCAATGATTTCTTGAAGACCCAGCAGGAGAAGAGGCACAGTTGGTTCAAGGCAA
 GTGGTACCATCAAGAAGTCCGAGCTGGCCTCAGCATCTTTTACCCATCCCAAGTCTCCAGTTTCCC
 TATCATACAGGACTCCATGCTGAAAGGCAAAGTGGGTGTACCAGAGCTTCGGGTTGGGCGCCTCATGAAC
 CGTTCATCTCCTGTACCATGAAGAACCCAAAGTGAAGTGTGGTACCCCTCCAGCCCCAGGCAG
 GTCTCCTGTGCCCTCAGCACGTGGGCTCCCTCCCCAGCACGGACCTCTCCTTTGGTCAGTGGTCACTG
 CAAGAACATTCCTACTCTGGAGTATGGATTCTCGTTCAGATCATGAAGTATGCAGAACAGAGGATTCCA
 ACATTGAATGAGTACTGTGTGGTGTGTGATGAGCAGCATGTCTTCCAAAATGGATCTATGCTGAAGCCAG
 CTGTCTGTACTCGTGAATATGCGTTTTCTCTTACACACTGGGCGTCATGTCTGGAGCTGCAGAGGA
 GGTGGCCACTGGAGCAGAGGTGGTGGATCTGCTGGTGGCCATGTGTAGGGCAGCTTAGAGTCCCCTAGA
 AAGAGCATCATCTTTGAGCCTTATCCCTCTGTGGTGGACCCACTGATCCCAAGACTCTGGCCTTTAACC
 CTAAGAAGAAGAATTATGAGCGGCTTCAGAAAGCTCTGGATAGTGTGATGTCTATTCGGGAGTACCCCA
 GGGCTCATATTTGAAAATCAAGAAACAGATGGACAAGTTGGATCCCTGGCCCATCTCTCCTGCAGTGG
 ATCATCTCTAGCAACAGGTCACACATTGTCAAACCTACTCTCAGCAGGCTGAAGTTCATGCACACCTCAC
 ACCAGTTCCTCCTGCTGAGCAGCCCTCCTGCCAAGGAGGCTCGGTTCCGGACCGCAAGAAGCTCTATGG
 CAGCACCTTTCCTTCCATGGGTCCCACATTGAGAACTGGCATTTCGATCTGCGCAATGGGCTGGTCAAT
 GCATCCTACACAAACTGCAGCTGCATGGAGCAGCCTATGGCAAAGGCATCTACCTGAGCCCCATCTCCA
 GTATTTCTTTGGATACTCAGGAATGGGAAAAGGACAGCACAGGATGCCCTCAAGGATGAGCTGGTCCA
 GAGATAACAACAGGATGAATACCATCCCCAGACCCGATCCATTAGTACGGTTCCTGCAGAGTCGGAAT
 CTAAACTGTATAGCACTTTGTGAAGTATTACATCTAAGGACCTCCAGAAGCATGGGAACATCTGGGTGT
 GCCTGTGTCGACCATGTCTGCACAAGATTCTCTTTGTATATGAGGATGGTCAGGTGGGCGATGCCAA
 CATTAATACTCAGGACCCCAAGATACAGAAGGAAATCATGCGTGTGATCGGAACCTCAGGTTTACACAAAC

ACGCGTACGCGGCCGCTCGAGCAGAAACTCATCTCAGAAGAGGATCTGGCAGCAAATGATATCCTGGATT
 ACAAGGATGACGACGATAAGGTTTAA

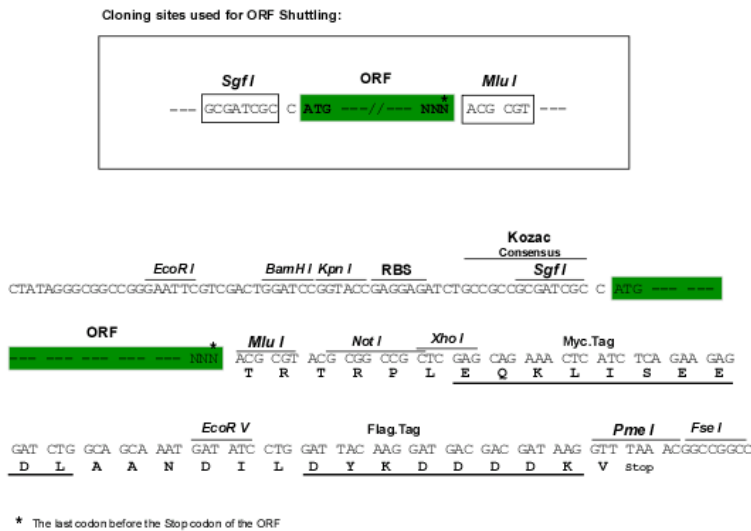
Protein Sequence:

>RC211123 protein sequence
 Red=Cloning site Green=Tags(s)

MDIKGQFWNDDSEGDNESEEFLYGVQGSAAADLYRHPQLDADIEAVKEIYSENSVSIREYGTIDVDVID
 LHINISFLDEEVSTAWKVLRTPEIVLRLRFLSLQYLDGPEPSIEVFQPSNKEGFLGLQLKKILGMFTSQ
 QWKHLNDFLKTQEKRHSWFKASGTIKKFRAGLSIFSPIKSPSPFIIQDSMLKGLGVPPELRVGRMLN
 RSI SCTMKNPKVEVFGYPPSPQAGLLCPQHVGLPPPARTSPLVSGHCKNIPTLEYGFLVQIMKYAEQRIP
 TLNEYCVVCDEQHVFNQGSMLKPAVCTREL CVFSFYTLGVMSGAAEEVATGAEVVDLLVAMCRAALES
 PRKSIIFEPYPSVVDPTDPKTLAFNPKKNYERLQKALDSVMSIREMTQGSYLEIKKQMDKLDPLAHPLLQW
 IISNRSHIVKLP LSRKFMHTSHQFLLLSSPPAKEARFRTAKKLYGSTFAFHGSHIENWHISILRNLV
 VNASYTKLQLHGAAYGKGIYLSPISSISFGYSGMGKGQHRMPSKDELVQRYNRMNTIPQTRSIQSRFLQSRN
 LNCIALCEVITSKDLQKHGNIWVCPVSDHVCTRFFVYEDGQVGDANINTQDPKIQKEIMRVIGTQVYTN

TRTRPLEQKLI SEEDLAANDILDYKDDDDKV

Chromatograms: https://cdn.origene.com/chromatograms/mk6195_a07.zip
 Restriction Sites: SgfI-MluI
 Cloning Scheme:



ACCN: NM_020214
 ORF Size: 1890 bp

OTI Disclaimer: The molecular sequence of this clone aligns with the gene accession number as a point of reference only. However, individual transcript sequences of the same gene can differ through naturally occurring variations (e.g. polymorphisms), each with its own valid existence. This clone is substantially in agreement with the reference, but a complete review of all prevailing variants is recommended prior to use. [More info](#)

OTI Annotation: This clone was engineered to express the complete ORF with an expression tag. Expression varies depending on the nature of the gene.

Components: The ORF clone is ion-exchange column purified and shipped in a 2D barcoded Matrix tube containing 10ug of transfection-ready, dried plasmid DNA (reconstitute with 100 ul of water).

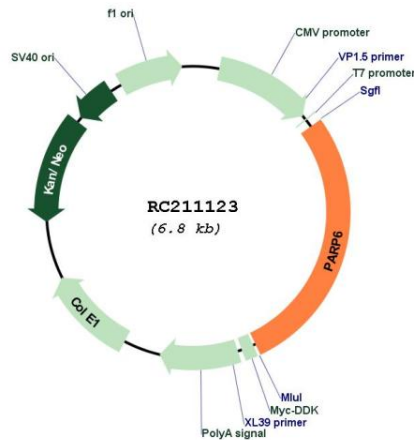
- Reconstitution Method:
1. Centrifuge at 5,000xg for 5min.
 2. Carefully open the tube and add 100ul of sterile water to dissolve the DNA.
 3. Close the tube and incubate for 10 minutes at room temperature.
 4. Briefly vortex the tube and then do a quick spin (less than 5000xg) to concentrate the liquid at the bottom.
 5. Store the suspended plasmid at -20°C. The DNA is stable for at least one year from date of shipping when stored at -20°C.

Note: Plasmids are not sterile. For experiments where strict sterility is required, filtration with 0.22um filter is required.

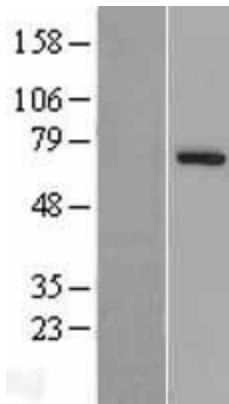
RefSeq: [NM_020214.4](#)
 RefSeq Size: 2631 bp

RefSeq ORF: 1893 bp
 Locus ID: 56965
 UniProt ID: [Q2NL67](#)
 Cytogenetics: 15q23
 MW: 71.1 kDa
 Gene Summary: Mono-ADP-ribosyltransferase that mediates mono-ADP-ribosylation of target proteins. [UniProtKB/Swiss-Prot Function]

Product images:



Circular map for RC211123



Western blot validation of overexpression lysate (Cat# [LY402763]) using anti-DDK antibody (Cat# [TA50011-100]). Left: Cell lysates from untransfected HEK293T cells; Right: Cell lysates from HEK293T cells transfected with RC211123 using transfection reagent MegaTran 2.0 (Cat# [TT210002]).