

## Product datasheet for RC211122

### PCPTP1 (PTPRR) (NM\_130846) Human Tagged ORF Clone

#### Product data:

Product Type:	Expression Plasmids
Product Name:	PCPTP1 (PTPRR) (NM_130846) Human Tagged ORF Clone
Tag:	Myc-DDK
Symbol:	PCPTP1
Synonyms:	EC-PTP; PCPTP1; PTP-SL; PTPBR7; PTPRQ
Mammalian Cell Selection:	Neomycin
Vector:	pCMV6-Entry (PS100001)
E. coli Selection:	Kanamycin (25 ug/mL)
ORF Nucleotide Sequence:	>RC211122 ORF sequence Red=Cloning site Blue=ORF Green=Tags(s)

TTTTGTAATACGACTCACTATAGGGCGCCGGGAATTCGTCGACTGGATCCGGTACCGAGGAGATCTGCC  
GCC**CGATCGCC**

ATGATTCTTTACAGATTAAGAAAGATTTTCAGCTTTCCTTAAGACAAGACAAAGAGAAAAACCAGGAGA  
TCCACCTATCGCCATCACATTACAGCCAGCACTGTCCGAGGCAAAGACAGTCCACAGCATGGTCCAACC  
TGAGCAGGCCCAAAGGTAAGTGAATGTTGTCGTGGACCCCAAGGCCGAGGTGCTCCTGAGATCAGAGCT  
ACCACCGTACCTCTGTTTGCCTTCTCCTTTCAAATGAAGCCCATAGGACTTCAAGAGAGAAGAGGGT  
CCAACGTATCTTTACATTGGACATGAGTAGTCTGGGAAACATTGAACCTTTGTGTCTATACCAACACC  
ACGGGAGAAGGTAGCAATGGAGTATCTGCAGTCAGCCAGCCGAATTCACAAGGTCTCAGCTGAGGGAC  
GTCGTGGCAAGTTCACATTTACTCCAAAGTGAATTCATGGAAATACCAATGAACTTTGTGGATCCCAAAG  
AAATTGATATCCGCGTCATGGAATAAAATCGCTATAAGACCATTTTACCAAATCCCCTCAGCAGAGT  
GTGTTAAGACCAAAAAATGTAACCGATTTCATTGAGCACCTACATTAATGCTAATATATAGGGGCTAC  
AGTGGCAAGGAGAAAGCCTTCATTGCCACGCAGGGCCCATGATCAACACCGTGGATGATTTCTGGCAGA  
TGGTTTGGCAGGAAGACAGCCCTGTGATTGTTATGATCACAAAACCTCAAAGAAAAAATGAGAAATGTGT  
GCTATACTGGCCGAAAAGAGAGGGATATATGAAAAGTTGAGGTTCTGGTTATCAGTGTAAATGAATGT  
GATAACTACACCATTCGAAACCTTGTCTTAAAGCAAGGAAGCCACACCCAACATGTAAGCATTACTGGT  
ACACCTCATGGCCTGATACAAGACTCCAGACAGTGCCAGCCCTCCTACAGCTCATGCTGGATGTAGA  
AGAAGACAGACTTGTCTCCAGGCCGAGGGCCTGTGGTTGTCCACTGCAGTGCAGGAATAGGTAGAACA  
GGGTGTTTTATTGCTACATCCATTGGCTGTCAACAGCTGAAAGAAGAAGGAGTTGTGGATGCACTAAGCA  
TTGTCTGCCAGCTTCGTATGGATAGAGGTGGAATGGTGCAAACAGTGAGCAGTATGAATTTGTGCCACA  
TGCTCTGTGCCTGTATGAGAGCAGACTTTCAGCAGAGACTGTCCAG

**ACGCGT**ACGCGGCCGCTCGAGCAGAAACTCATCTCAGAAGAGGATCTGGCAGCAAATGATATCCTGGATT  
ACAAGGATGACGACGATAAGGTTTAA



[View online >](#)

**Protein Sequence:** >RC211122 protein sequence  
 Red=Cloning site Green=Tags(s)

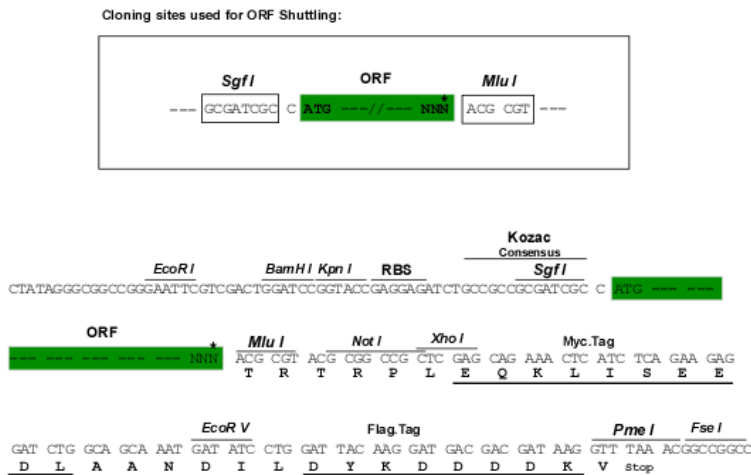
MILYRLKERFQLSLRQDKEKNQEIHLSPITLQPALSEAKTVHSMVQPEQAPKVLNVVDPQGRGAPEIRA  
 TTATSVCPSPFKMKPIGLQERRGSNVSLTDMSSLGNIEPFVSIPTPREKVAMEYLQSASRILTRSQRD  
 VVASSHLLQSEFMEIPMNFVDPKEIDIPRHGTKNRYKTILPNPLSRVCLRPKNVTDLSLSTYINANYIRGY  
 SGKEKAFIATQGP MINTVDDFWQMVWQEDSPVI VMITKLKEKNEKCVL YWPEKRGYIGKVEVLVISVNEC  
 DNYTIRNLVLKQGSHTQHVKHYWYTSWPDHKTPDSAQPLLQLMLDVEEDRLASQGRGPVVVHCSAGIGRT  
 GCFIATSIGCQLKEEGVVDALSIVCQLRMDRGGMVQTSEQYEFVHALCLYESRLSAETVQ

TRTRPLEQKLISEEDLAANDILDYKDDDDKV

**Chromatograms:** [https://cdn.origene.com/chromatograms/mk6377\\_f02.zip](https://cdn.origene.com/chromatograms/mk6377_f02.zip)

**Restriction Sites:** SgfI-MluI

**Cloning Scheme:**



\* The last codon before the Stop codon of the ORF

**ACCN:** NM\_130846

**ORF Size:** 1236 bp

**OTI Disclaimer:** The molecular sequence of this clone aligns with the gene accession number as a point of reference only. However, individual transcript sequences of the same gene can differ through naturally occurring variations (e.g. polymorphisms), each with its own valid existence. This clone is substantially in agreement with the reference, but a complete review of all prevailing variants is recommended prior to use. [More info](#)

**OTI Annotation:** This clone was engineered to express the complete ORF with an expression tag. Expression varies depending on the nature of the gene.

**Components:** The ORF clone is ion-exchange column purified and shipped in a 2D barcoded Matrix tube containing 10ug of transfection-ready, dried plasmid DNA (reconstitute with 100 ul of water).

**Reconstitution Method:**

1. Centrifuge at 5,000xg for 5min.
2. Carefully open the tube and add 100ul of sterile water to dissolve the DNA.
3. Close the tube and incubate for 10 minutes at room temperature.
4. Briefly vortex the tube and then do a quick spin (less than 5000xg) to concentrate the liquid at the bottom.
5. Store the suspended plasmid at -20°C. The DNA is stable for at least one year from date of shipping when stored at -20°C.

**RefSeq:** [NM\\_130846.1](#), [NP\\_570897.1](#)

**RefSeq Size:** 2782 bp

**RefSeq ORF:** 1239 bp

**Locus ID:** 5801

**UniProt ID:** [Q15256](#)

**Cytogenetics:** 12q15

**Domains:** Y\_phosphatase

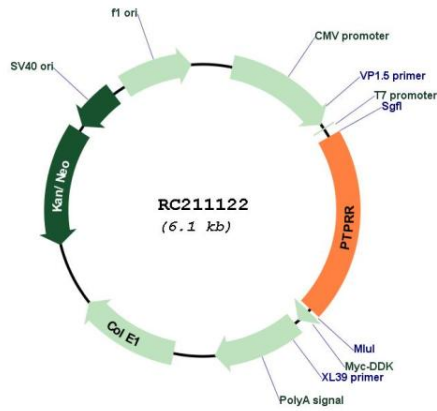
**Protein Families:** Druggable Genome, Phosphatase, Transmembrane

**Protein Pathways:** MAPK signaling pathway

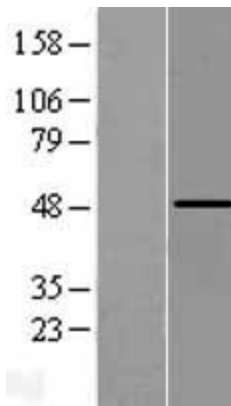
**MW:** 46.6 kDa

**Gene Summary:** The protein encoded by this gene is a member of the protein tyrosine phosphatase (PTP) family. PTPs are known to be signaling molecules that regulate a variety of cellular processes including cell growth, differentiation, mitotic cycle, and oncogenic transformation. This PTP possesses an extracellular region, a single transmembrane region, and a single intracellular catalytic domain, and thus represents a receptor-type PTP. Silencing of this gene has been associated with colorectal cancer. Multiple transcript variants encoding different isoforms have been found for this gene. This gene shares a symbol (PTPRQ) with another gene, protein tyrosine phosphatase, receptor type, Q (GeneID 374462), which is also located on chromosome 12. [provided by RefSeq, May 2011]

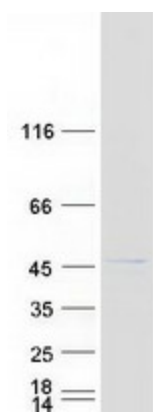
Product images:



Circular map for RC211122



Western blot validation of overexpression lysate (Cat# [LY408898]) using anti-DDK antibody (Cat# [TA50011-100]). Left: Cell lysates from untransfected HEK293T cells; Right: Cell lysates from HEK293T cells transfected with RC211122 using transfection reagent MegaTran 2.0 (Cat# [TT210002]).



Coomassie blue staining of purified PTPRR protein (Cat# [TP311122]). The protein was produced from HEK293T cells transfected with PTPRR cDNA clone (Cat# RC211122) using MegaTran 2.0 (Cat# [TT210002]).