

Product datasheet for **RC211118**

DNAJC1 (NM_022365) Human Tagged ORF Clone

Product data:

Product Type:	Expression Plasmids
Product Name:	DNAJC1 (NM_022365) Human Tagged ORF Clone
Tag:	Myc-DDK
Symbol:	DNAJC1
Synonyms:	DNAJL1; ERdj1; HTJ1; MTJ1
Mammalian Cell Selection:	Neomycin
Vector:	pCMV6-Entry (PS100001)
E. coli Selection:	Kanamycin (25 ug/mL)



[View online »](#)

ORF Nucleotide Sequence:

>RC211118 ORF sequence
 Red=Cloning site Blue=ORF Green=Tags(s)

TTTTGTAATACGACTCACTATAGGGCGGCCGGAATTCGTCGACTGGATCCGGTACCGAGGAGATCTGCC
 GCC**CGGATCGCC**

ATGACGGCTCCTTGCTCCAGCCGGCGCAGCTTCTGGACGCCGCCAGCTCGGGCTGGTGCCGTTCCCGC
 CGCCGCCCGCGGACGCCGCTGCTGTGGCTGCTGCTGCTGCTGCTGCGCCGCTGGCGCCGGCGCGG
 CTGGGAGAGCGGAGACCTGGAGTTGTTTGACTTAGTGGAGGAGGTGCAGCTCAACTTCTACCAGTTCCTC
 GGGGTGCAGCAGGATGCATCATCTGCAGACATCAGAAAAGCATATCGTAAGCTTTCACTAACTTTACATC
 CAGACAAGAATAAAGATGAAAAATGCAGAAACTCAGTTTAGACAATTGGTGGCCATTTATGAAGTTTTAAA
 GGTATGAACGAAGGCAGAGGTATGATGATATTCTGATCAATGGACTTCCAGATTGGCGACAGCCTGTA
 TTCTACTACAGCGGGTGAGAAAAATGAGCAATGCTGAGCTGGCATTACTCTTGTTCATTATTCTCACAG
 TGGGTCAATTATGCTGTGGTTTGGTCAATCTACCTGGAAAAACAAGTGAAGTAACTAAGTAGAAAAAA
 GAGAGAAAAGAAAAAAGACTGGCAGCAAGAGTGTGGATGTATCAAACTCGGTCTTCAGAAAAAAAT
 GAAAGATTGCTGATGAAACCACAGTGGCATGATTTGCTTCCATGCAAACTGGGGATTTGGTTTTGCCTTA
 CACTAAAAGCATTACCTCACCTCATCCAGGATGCTGGGCAGTTTTATGCTAAATATAAAGAAACAAGATT
 GAAGGAAAAGGAAGATGCACTGACTAGAACTGAACTTGAACACTTCAAAAAACAGAAAGTTAAAAAA
 CCAAACTGAAATTTCTGTATACACACCTTTAGAACTACATATATTCAGTCTTATGATCATGAACTT
 CCATAGAAGAAATTGAGGAACAAATGGATGATTGGTTGGAAAACAGGAACCGAACACAGAAAAACAGGC
 ACCTGAATGGACAGAAGAGGACCTCAGCCAAGTACAAGAAGTATGGTTAAGTCCCAGGAGGGACTCCA
 GGTGATGGGAAAAGATTGCCACGAATTGGGTGATCTGTGACAGATGTGACAACCAAGCAAGCAAC
 TGAAGATTCAAGTACCTGCTCCCAAGGATGGTTAGACTCTCGAACTCAAATCGACAGTTCAGAATTC
 CAGGCCCATCAAAACGGCCACCCTTGCCGATGACATGATCACCCAGCGAGAGGACGCAGAGGGGGTG
 GCAGCGGAGGAGGAGCAGGAGGGAGACTCCGGTGAAGCAGGAGACCGGGCCACTGATGCCCGCCTCGGA
 GGCGGAAGCCAGCCAGGCTGCTGGAGGCTACAGCGAAGCCGGAGCCAGAGGAGAAGTCCAGAGCCAGCG
 GCAGAAGGACTTTGACATAGCAGAACAACAGAGTCCAGCGACGAGGAGCCTGAGAAAAGAGAGACT
 CGGTCTGCAGAGGAGCCGTGGACTCAAAATCAACAGAACTTCTGGAAGTGGCGTTGCAGCAGTACCCAA
 GGGGATCTCTGACCGCTGGGACAAAATAGCCAGATGTGTCCCGTCCAAGAGCAAGGAAGACTGTATCGC
 TAGGTACAAGTTGCTGGTTGAAGTGGTCCAAAAGAAAAACAAGCTAAAAGC

ACGCGTACGCGGCCGCTCGAGCAGAACTCATCTCAGAAGAGGATCTGGCAGCAAATGATATCCTGGATT
 ACAAGGATGACGACGATAAGGTTTAA

Protein Sequence:

>RC211118 protein sequence
 Red=Cloning site Green=Tags(s)

MTAPCSQPAQLPGRRLGLVPFPPPPRPTLLWLLLLLLAAVAPARGWESGDLELFDLVEEVQLNFIYQFL
 GVQQDASSADIRKAYRKLSTLHPDKNKDENAETQFRQLVAIYEVLKDDERRQRYDDILINGLPDWRQPV
 FYYRRVRKMSNAELALLFIILTVGHYAVVWSIYLEKQLDELLSRKKREKKKTGSKSVDVSKLGASEKN
 ERLLMKPQWHDLLPCKLGIWFCLTLKALPHLIQDAGQFYAKYKETRLKEKEDALTRTELETQKQKVKK
 PKPEFPVYTPLETTYIQSYDHGTSIEEIEEQMDDWLENRNRTQKKQAPWTEEDLSQLTRSMVKFPGGTP
 GRWEKIAHELGRSVTDVTTKAKQLKDSVTCSPGMVRLSELKSTVQNSRPKATATLPPDDMITQREDAEGV
 AEEEEQEGDSGEQETGATDARPRRRKPARLLEATAKPEPEEKSRAKRQKDFDIAEQNESSDEESLRKERA
 RSAEEPWTQNNQKLELALQQYPRGSSDRWDKIARCVPSKSKEDCIARYKLLVELVQKKQAKS

TRTRPLEQKLISEEDLAANDILDYKDDDDKV

Chromatograms:

https://cdn.origene.com/chromatograms/mk6814_b02.zip

Restriction Sites:

Sgfl-MluI

Cloning Scheme:


ACCN: NM_022365

ORF Size: 1662 bp

OTI Disclaimer: The molecular sequence of this clone aligns with the gene accession number as a point of reference only. However, individual transcript sequences of the same gene can differ through naturally occurring variations (e.g. polymorphisms), each with its own valid existence. This clone is substantially in agreement with the reference, but a complete review of all prevailing variants is recommended prior to use. [More info](#)

OTI Annotation: This clone was engineered to express the complete ORF with an expression tag. Expression varies depending on the nature of the gene.

Components: The ORF clone is ion-exchange column purified and shipped in a 2D barcoded Matrix tube containing 10ug of transfection-ready, dried plasmid DNA (reconstitute with 100 ul of water).

- Reconstitution Method:**
1. Centrifuge at 5,000xg for 5min.
 2. Carefully open the tube and add 100ul of sterile water to dissolve the DNA.
 3. Close the tube and incubate for 10 minutes at room temperature.
 4. Briefly vortex the tube and then do a quick spin (less than 5000xg) to concentrate the liquid at the bottom.
 5. Store the suspended plasmid at -20°C. The DNA is stable for at least one year from date of shipping when stored at -20°C.

RefSeq: [NM_022365.4](#)

RefSeq Size: 2213 bp

RefSeq ORF: 1665 bp

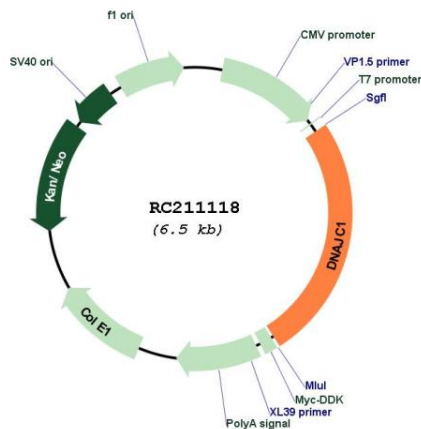
Locus ID: 64215

UniProt ID: [Q96KC8](#)

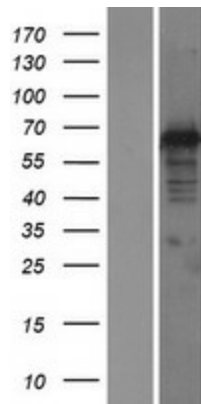
Cytogenetics: 10p12.31
Domains: myb_DNA-binding, DnaJ
Protein Families: Transcription Factors, Transmembrane
MW: 63.9 kDa

Gene Summary: The membrane protein encoded by this gene is a DNAJ-like heat shock protein that binds the molecular chaperone BiP. In addition, the encoded protein contains two SANT domains that have been shown to bind serpin alpha1-antichymotrypsin and inter-alpha trypsin inhibitor heavy chain 4. [provided by RefSeq, Jul 2016]

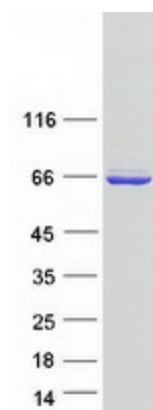
Product images:



Circular map for RC211118



Western blot validation of overexpression lysate (Cat# [LY411690]) using anti-DDK antibody (Cat# [TA50011-100]). Left: Cell lysates from untransfected HEK293T cells; Right: Cell lysates from HEK293T cells transfected with RC211118 using transfection reagent MegaTran 2.0 (Cat# [TT210002]).



Coomassie blue staining of purified DNAJC1 protein (Cat# [TP311118]). The protein was produced from HEK293T cells transfected with DNAJC1 cDNA clone (Cat# RC211118) using MegaTran 2.0 (Cat# [TT210002]).