

Product datasheet for **RC211112L4V**

MS4A6A (NM_022349) Human Tagged ORF Clone Lentiviral Particle

Product data:

Product Type:	Lentiviral Particles
Product Name:	MS4A6A (NM_022349) Human Tagged ORF Clone Lentiviral Particle
Symbol:	MS4A6A
Synonyms:	4SPAN3; 4SPAN3.2; CD20L3; CDA01; MS4A6; MST090; MSTP090
Mammalian Cell Selection:	Puromycin
Vector:	pLenti-C-mGFP-P2A-Puro (PS100093)
Tag:	mGFP
ACCN:	NM_022349
ORF Size:	675 bp
ORF Nucleotide Sequence:	The ORF insert of this clone is exactly the same as(RC211112).
OTI Disclaimer:	The molecular sequence of this clone aligns with the gene accession number as a point of reference only. However, individual transcript sequences of the same gene can differ through naturally occurring variations (e.g. polymorphisms), each with its own valid existence. This clone is substantially in agreement with the reference, but a complete review of all prevailing variants is recommended prior to use. More info
OTI Annotation:	This clone was engineered to express the complete ORF with an expression tag. Expression varies depending on the nature of the gene.
RefSeq:	NM_022349.2 , NP_071744.2
RefSeq Size:	1562 bp
RefSeq ORF:	678 bp
Locus ID:	64231
UniProt ID:	Q9H2W1
Cytogenetics:	11q12.2
Domains:	CD20
Protein Families:	Druggable Genome, Transmembrane

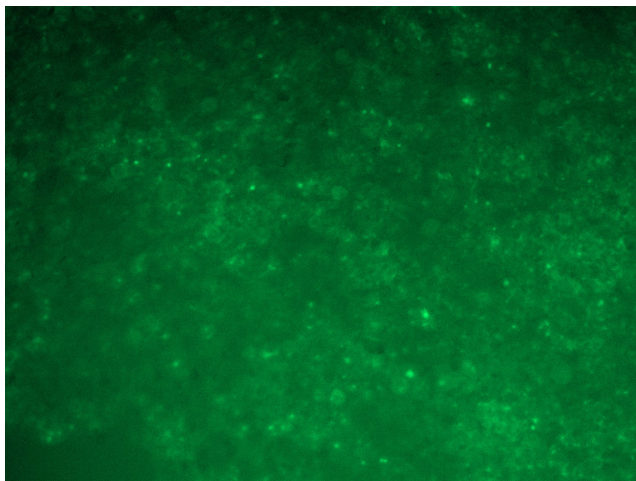


[View online »](#)

MW: 24.3 kDa

Gene Summary: This gene encodes a member of the membrane-spanning 4A gene family. Members of this nascent protein family are characterized by common structural features and similar intron/exon splice boundaries and display unique expression patterns among hematopoietic cells and nonlymphoid tissues. The gene encoding this protein is localized to 11q12.1, among a cluster of family members. Alternative splicing of this gene results in several transcript variants that encode different protein isoforms. [provided by RefSeq, Oct 2011]

Product images:



[RC211112L4] was used to prepare Lentiviral particles using [TR30037] packaging kit. HEK293T cells were transduced with RC211112L4V particle to overexpress human MS4A6A-mGFP fusion protein.