

Product datasheet for RC211112L3

MS4A6A (NM_022349) Human Tagged Lenti ORF Clone

Product data:

Product Type:	Expression Plasmids
Product Name:	MS4A6A (NM_022349) Human Tagged Lenti ORF Clone
Tag:	Myc-DDK
Symbol:	MS4A6A
Synonyms:	4SPAN3; 4SPAN3.2; CD20L3; CDA01; MS4A6; MST090; MSTP090
Mammalian Cell Selection:	Puromycin
Vector:	pLenti-C-Myc-DDK-P2A-Puro (PS100092)
E. coli Selection:	Chloramphenicol (34 ug/mL)
ORF Nucleotide Sequence:	The ORF insert of this clone is exactly the same as(RC211112).
Restriction Sites:	SgfI-MluI
Cloning Scheme:	

Cloning sites used for ORF Shuttling:



* The last codon before the Stop codon of the ORF.

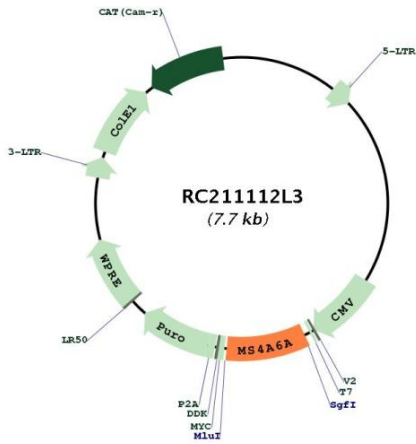
ACCN:	NM_022349
ORF Size:	675 bp



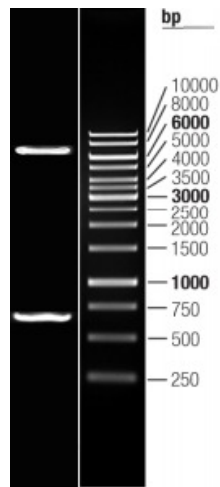
[View online »](#)

OTI Disclaimer:	The molecular sequence of this clone aligns with the gene accession number as a point of reference only. However, individual transcript sequences of the same gene can differ through naturally occurring variations (e.g. polymorphisms), each with its own valid existence. This clone is substantially in agreement with the reference, but a complete review of all prevailing variants is recommended prior to use. More info
OTI Annotation:	This clone was engineered to express the complete ORF with an expression tag. Expression varies depending on the nature of the gene.
Components:	The ORF clone is ion-exchange column purified and shipped in a 2D barcoded Matrix tube containing 10ug of transfection-ready, dried plasmid DNA (reconstitute with 100 ul of water).
Reconstitution Method:	<ol style="list-style-type: none">1. Centrifuge at 5,000xg for 5min.2. Carefully open the tube and add 100ul of sterile water to dissolve the DNA.3. Close the tube and incubate for 10 minutes at room temperature.4. Briefly vortex the tube and then do a quick spin (less than 5000xg) to concentrate the liquid at the bottom.5. Store the suspended plasmid at -20°C. The DNA is stable for at least one year from date of shipping when stored at -20°C.
RefSeq:	NM_022349.2 , NP_071744.2
RefSeq Size:	1562 bp
RefSeq ORF:	678 bp
Locus ID:	64231
UniProt ID:	Q9H2W1
Cytogenetics:	11q12.2
Domains:	CD20
Protein Families:	Druggable Genome, Transmembrane
MW:	24.3 kDa
Gene Summary:	This gene encodes a member of the membrane-spanning 4A gene family. Members of this nascent protein family are characterized by common structural features and similar intron/exon splice boundaries and display unique expression patterns among hematopoietic cells and nonlymphoid tissues. The gene encoding this protein is localized to 11q12.1, among a cluster of family members. Alternative splicing of this gene results in several transcript variants that encode different protein isoforms. [provided by RefSeq, Oct 2011]

Product images:



Circular map for RC211112L3



Double digestion of RC211112L3 using SgfI and MluI