

Product datasheet for RC211112

MS4A6A (NM_022349) Human Tagged ORF Clone

Product data:

Product Type:	Expression Plasmids
Product Name:	MS4A6A (NM_022349) Human Tagged ORF Clone
Tag:	Myc-DDK
Symbol:	MS4A6A
Synonyms:	4SPAN3; 4SPAN3.2; CD20L3; CDA01; MS4A6; MST090; MSTP090
Mammalian Cell Selection:	Neomycin
Vector:	pCMV6-Entry (PS100001)
E. coli Selection:	Kanamycin (25 ug/mL)
ORF Nucleotide Sequence:	>RC211112 ORF sequence Red=Cloning site Blue=ORF Green=Tags(s)

TTTTGTAATACGACTCACTATAGGGCGGCCGGAATTCGTCGACTGGATCCGGTACCGAGGAGATCTGCC
GCC**CGATCGCC**

ATGACATCACAACCTGTTCCCAATGAGACCATCATAGTGCTCCCATCAAATGTCATCAACTTCTCCCAAG
CAGAGAAACCCGAACCCACCAACCAGGGGCAGGATAGCCTGAAGAAACATCTACACGCAGAAATCAAAGT
TATTGGGACTATCCAGATCTTGTGTGGCATGATGGTATTGAGCTTGGGGATCATTTTGGCATCTGCTTCC
TTCTCTCAAATTTTACCCAAGTACTTCTACACTGTTGAACTCTGCTTACCCATTCATAGGACCCTTTT
TTTTTATCATCTCTGGCTCTCTATCAATCTCCACAGAGAAAAGGTTAACCAAGCTTTTGGTGCATAGCAG
CCTGGTTGGAAGCATTCTGAGTGCTCTGTCTGCCCTGGTGGGTTTCATTATCCTGTCTGTCAAACAGGCC
ACCTTAAATCCTGCCTCACTGCAGTGTGAGTTGGACAAAATAATATACCAACAAGAAGTTATGTTTCTT
ACTTTTATCATGATTCACCTTTATACCACGGACTGCTATACAGCCAAAGCCAGTCTGGCTGGAACCTCTC
TCTGATGCTGATTTGCACTCTGCTGGAATTCTGCCTAGCTGTGCTCACTGCTGTGCTGCGGTGAAAACAG
GCTTACTCTGACTTCCCTGGGGTGAAGTGTGCTGGCCGGCTTCACT

ACGCGTACGCGGGCGCTCGAGCAGAAACTCATCTCAGAAGAGGATCTGGCAGCAAATGATATCCTGGATT
ACAAGGATGACGACGATAAGGTTTAA



[View online »](#)

Protein Sequence: >RC211112 protein sequence
Red=Cloning site Green=Tags(s)

MTSQPVPNETIIVLPSNVINFSQAЕКPEPTNQGD⁺SLKKHLHAEIKVIGTIQILCGMMVLSLGIILASAS
 FSPNFTQVTSTLLNSAYPFIGPFFFIISGSLISISTEKRLTKLLVHSSLVGSILSALSALVGFIIISVKQA
 TLNPASLQCELDKNNIPTRSYVSYFYHDSLYTTDCYTAKASLAGT⁺LSMLICTLLEFCLAVLTAVLRWKQ
 AYSDFPGVSVLAGFT

TRTRPLEQKLISEEDLAANDILDYKDDDDKV

Chromatograms: https://cdn.origene.com/chromatograms/mk6378_d08.zip

Restriction Sites: SgfI-MluI

Cloning Scheme:



ACCN: NM_022349

ORF Size: 675 bp

OTI Disclaimer: The molecular sequence of this clone aligns with the gene accession number as a point of reference only. However, individual transcript sequences of the same gene can differ through naturally occurring variations (e.g. polymorphisms), each with its own valid existence. This clone is substantially in agreement with the reference, but a complete review of all prevailing variants is recommended prior to use. [More info](#)

OTI Annotation: This clone was engineered to express the complete ORF with an expression tag. Expression varies depending on the nature of the gene.

Components: The ORF clone is ion-exchange column purified and shipped in a 2D barcoded Matrix tube containing 10ug of transfection-ready, dried plasmid DNA (reconstitute with 100 ul of water).

Reconstitution Method:

1. Centrifuge at 5,000xg for 5min.
2. Carefully open the tube and add 100ul of sterile water to dissolve the DNA.
3. Close the tube and incubate for 10 minutes at room temperature.
4. Briefly vortex the tube and then do a quick spin (less than 5000xg) to concentrate the liquid at the bottom.
5. Store the suspended plasmid at -20°C. The DNA is stable for at least one year from date of shipping when stored at -20°C.

RefSeq: [NM_022349.3](#), [NP_071744.2](#)

RefSeq Size: 1562 bp

RefSeq ORF: 678 bp

Locus ID: 64231

UniProt ID: [Q9H2W1](#)

Cytogenetics: 11q12.2

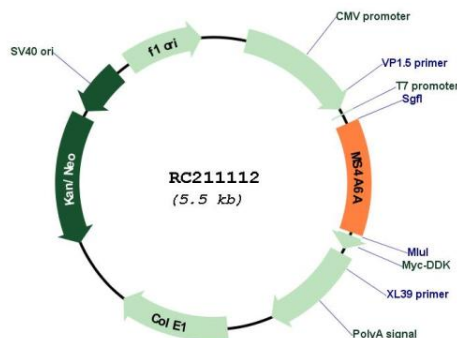
Domains: CD20

Protein Families: Druggable Genome, Transmembrane

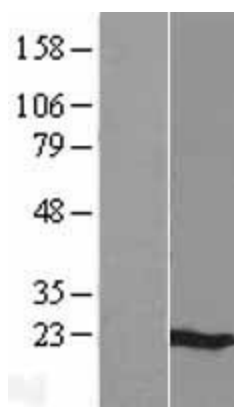
MW: 24.3 kDa

Gene Summary: This gene encodes a member of the membrane-spanning 4A gene family. Members of this nascent protein family are characterized by common structural features and similar intron/exon splice boundaries and display unique expression patterns among hematopoietic cells and nonlymphoid tissues. The gene encoding this protein is localized to 11q12.1, among a cluster of family members. Alternative splicing of this gene results in several transcript variants that encode different protein isoforms. [provided by RefSeq, Oct 2011]

Product images:



Circular map for RC211112



Western blot validation of overexpression lysate (Cat# [LY411718]) using anti-DDK antibody (Cat# [TA50011-100]). Left: Cell lysates from untransfected HEK293T cells; Right: Cell lysates from HEK293T cells transfected with RC211112 using transfection reagent MegaTran 2.0 (Cat# [TT210002]).