

Product datasheet for **RC211111**

NLRX1 (NM_024618) Human Tagged ORF Clone

Product data:

Product Type:	Expression Plasmids
Product Name:	NLRX1 (NM_024618) Human Tagged ORF Clone
Tag:	Myc-DDK
Symbol:	NLRX1
Synonyms:	CLR11.3; DLNB26; NOD5; NOD9; NOD26
Mammalian Cell Selection:	Neomycin
Vector:	pCMV6-Entry (PS100001)
E. coli Selection:	Kanamycin (25 ug/mL)



[View online »](#)

ORF Nucleotide Sequence:

>RC211111 ORF sequence
 Red=Cloning site Blue=ORF Green=Tags(s)

TTTTGTAATACGACTCACTATAGGGCGGCCGGGAATTCGTCGACTGGATCCGGTACCGAGGAGATCTGCC
 GCC**GCGATCGCC**

ATGAGGTGGGGCCACCATTGGCCAGGGCCTCTGGGGCTCTGGTTTTAGAAGAGCACTCCAGCGACCAG
 ATGATCGTATCCCTTCCTGATCCACTGGAGTTGGCCCTTCAAGGGGAGCGTCCCTTTGGGCCCTAG
 GGCTTTATACGCCACCACGGAAGCTCGGTAGATAGCGCTCCCCACCCGGGAGGCATGGACGGCTGTT
 CCCAGCGCCTCTGCAACTGAAGCTATACAGCGCACCGCCGGAACCTGGCTGAGTGGTTCAGCCGGCTGC
 CCAGGGAGGAGCGCCAGTTGGCCCAACCTTGGCCTAGACACGGTCCACGTTGACCCTGTGATCCGCGA
 GAGTACCCTGATGAGCTACTTCGCCACCCGCGGAGCTGGCCCTGGAGCATCAGCCACCCAGGCCGGG
 CTCCTCCACTGGCCTTGTCTCAGCTCTTAACCCGGATGCTGTGGGCGCCGGTGCAGACAGTGGTGC
 TGTATGGGACAGTGGGCACAGGCAAGAGCACGCTGGTGGCAAGATGGTCTGGACTGGTGTATGGGCG
 GCTGCCGGCCTCGAGCTGCTCATCCCTTCTCCTGTGAGGACCTGTCATCCCTGGGCCCTGCCACGCC
 TCCTGTGCCAACTTGTGGCCACGCGCTACACGCCCTGAAGGAGTTCTGCCCTGATGGCTGCTGCTG
 GGTCACCTCCTCTTTGTGCTCCATGGCTTAGAGCATCTCAACCTCGACTTCCGGCTGGCAGGCACGGG
 ACTTTGTAGTGACCCGGAGGAACCGCAGGAACAGCTGCTATCATCGTCAACCTGCTGCGAAATACATG
 CTGCCCTCAGGCCAGCATTCTGGTGACCACTCGGCCCTCTGCCATTGGCCGTATCCCAGCAAGTACGTGG
 GCCGTATGGTGAGATCTGCGGTTTCTCTGATACCAACCTGCAGAAGCTCTACTTCCAGCTCCGCCTCAA
 CCAGCCGTAAGCGGGTATGCCGTTGGCGGTTGAGGTGTCTGTCCACACCAGCTCAGCGTGACCACCTG
 GTGCAGATGCTCTCCCGAACTGGAGGGGCACCACAGATAGCCGCTGCCTGCTTCTGCCGCTCACTATT
 GCTGGCTCGTTTGTGCCACCTTGCACTTCTGTCATGCCCCACGCTGCTGGGCAGACCTTACAAGCAT
 CTATACCAGCTTCTGCGCCTCAACTTCAGCGGGGAAACCTGGACAGCACTGACCCCTCAATTTGTCC
 CTGATGGCCTATGCAGCCGAACCATGGCAAGTTGGCCTATGAGGGGGTGTCTCCCGCAAGACCTACT
 TCTCTGAAGAGGATGTCTGTGGCTGCCTGGAGGCTGGCATCAGGACGGAGGAGGAGTTTTCAGCTGTGCA
 CATCTTCCGTGCGGATGCCCTGAGGTTTTCTGGCCCATGTGTGGAGCCAGGGCGTGCAGGCACCTTC
 GTGTTACCGTGCCCGCCATGCAGGAATACCTGGCTGCCCTCTACATTGTGCTGGGTTTGCAGCAAGCGA
 CCCTGCAAAGGTGGGCAAGGAAGTGGCTGAGCTCGTGGCCGTGTTGGGAGGAGCTCAGCCTGGTACT
 GGGCATCATGGCAAGCTGCTGCCTCTGCGGGCTCTGCCTCTGCTTCAACCTGATCAAGTGGTTCGA
 CGAGTGTGGGCGCATGGTGGTAAAAGCCGGGAGGCGGTGGCTCAGGCCATGGTGTGGAGATGTTTC
 GAGAGGAGGACTACTACAACGATGATGTTCTGGACCAGATGGGCGCCAGTATCCTGGGCGTGGAGGGCC
 CCGGCGCCACCCAGATGAGCCCCCTGAGGATGAAGTCTTCGAGCTTCCCCATGTTTCATGGGGGGCTT
 CTCTGCCCCACAACCGAGCTGTGCTAGCTCAGCTTGGCTGCCCATCAAGAACCTGGATGCCCTGGAGA
 ATGCCAGGCCATCAAGAAGAAGCTGGGCAAGCTGGGCGGCAGGTGCTGCCCATCAGAGCTCCTTGA
 CCACCTCTTCCACTATGAGTTCAGAACAGCGCTTCTCCGCTGAGGTGCTCAGCTCCCTGCGTCAG
 CTCAACCTGGCAGGTGTGCGCATGACACCAGTCAAGTGCACAGTGGTGGCAGCTGTGCTGGCAGCGGAA
 GGCATGCCCTGGATGAGGTGAACCTGGCCTCTGCCAGCTAGATCCTGCTGGGCTGCGCACACTCCTGCC
 TGTCTTCCGTGCGTCCCGAAGCTGGGTTGCAACTCAACAGCTGGGCCCTGAGGCTGCAAGGACCTC
 CGAGACCTGTTGCTGCATGACCAGTGCCAAATTACCACACTGCGGCTGTCCAACAACCCGCTGACGGCGG
 CAGGTGTTGCCGTGCTAATGAGGGGCTGGCAGGAAACCTCAGTGACGCACCTGTCCCTGCTGCACAC
 GGGCCTTGGGACGAAGGCTGGAGCTGTGGCTGCCAGCTGGACCGCAACCGGACGCTGCAGGAGCTG
 AACGTGGCGTACAACGGTGTGGTACACAGCGGCCCTGGCCCTGGCCAGAGCTGCCCGGAGCACCCCTT
 CCCTGGAAGTGTACACCTCTACTTCAATGAGCTGAGCTCAGAGGGCCGCCAGGTCTTGCAGACTTGGG
 GGGTGTGCTGAAGTGGTGGCCGGTGGTGGTGTACTGACAGAGGGGACGGCGGTGTCAGAATACTGG
 TCAGTGATCCTCAGTGAAGTCCAGCGGAACCTCAATAGCTGGGATCGGGCCGGGTTGAGCGACACCTG
 AGCTCCTACTGCGGGATCTGGAAGATAGCCGGGTGCCACCTTAATCCTTGGCGCAAGGCCAGCTGCT
 GCGAGTGGAGGGGAGGTGAGGGCCCTCTGGAGCAGCTGGGAAGCTCTGGAAGC

ACGCGTACGCGGCCGCTCGAGCAGAACTCATCTCAGAAGAGGATCTGGCAGCAAATGATATCCTGGATT
 ACAAGGATGACGACGATAAGGTTTAA

Protein Sequence: >RC211111 protein sequence
Red=Cloning site Green=Tags(s)

```
MRWGHHLPRASWGSFRRALQRPDDRIPFLIHWSWPLQGERPFGPPRAFIRHHGSSVDSAPPPGRHGRLF
PSASATEAIQRHRRNLAEFWSRLPREERQFGPTFALDTHVHVPVIRESTPDELLRPPAELALEHQPQAG
LPPLALSQLFNPDACGRRVQTVVLYGTGTGKSTLVRKMLVDWCYGRLPAFELLIPFSCEDLSSLGPAPA
SLCQLVAQRYTPLKEVLPMAAAGSHLLFVLHGLEHLNLDLDFRLAGTGLCSDPPEEPQEPAAIIVNLLRKYM
LPQASILVTRPSAIGRIPSKYVGRYGEICGFSDTNLQKLYFQLRLNQPYCGYAVGSGSVATPAQRDHL
VQMLSRNLEGHQIAAACFLPSYCWLVCATLHFLHAPTPAGQTLTSIYTSFLRLNFSGETLDSTDPNSLS
LMAYAARTMGKLAYEGVSSRKTYFSEEDVCGCLEAGIRTEEEFQLLHIFRRDALRFFLAPCPEPGRAGTF
VFTVPAMQEYLAALYIVLGLRKTTLQKVGKEVAELVGRVGEDVSLVLGIMAKLLPLRALPLLNLIKVVP
RVFGRMVGKSREAVAQAMVLEMFREEDYNDVLDQMGASILGVEGPRRHPEPPEDEVFELPFMFMGGL
LSAHNRAVLAQLGCPKIKNLDAENAQAIAKKKLGKLGROVLPPELDDLHFFHYEFQNRFSAEVLSLRQ
LNLAGVRMTPVKCTVVAAVLGSGRHALDEVNLASCQLDPAGLRTLLPVFLRARKLGLQLNSLGPEACKDL
RDLLLHDQCQITTLRLSNNPLTAAGVAVLMEGLAGNTSVTHLSLLHTGLGDEGLELLAAQLDRNRQLQEL
NVAYNGAGDTAALALARAAREHPSLELLHLYFNELSSEGRQVLRDLGAAEGGARVVVSLTEGTAVSEYM
SVILSEVQRNLSWDRARVQRHLELLLRLDLEDSRGATLNPWRKAQLLRVEGEVRALLEQLGSSGS
```

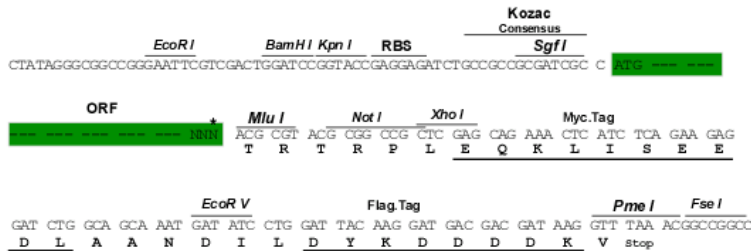
TRTRPLEQKLISEEDLAANDILDYKDDDDKV

Chromatograms: https://cdn.origene.com/chromatograms/mk6140_h12.zip

Restriction Sites: SgfI-MluI

Cloning Scheme:

Cloning sites used for ORF Shuttling:



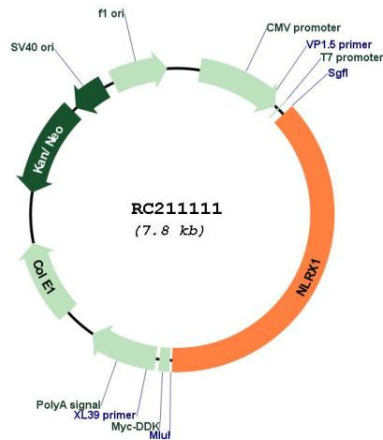
* The last codon before the Stop codon of the ORF

ACCN: NM_024618

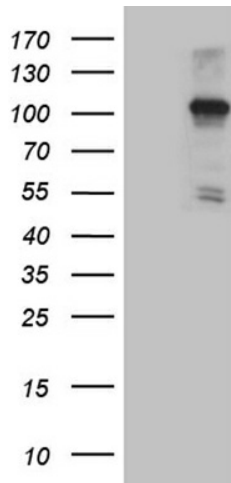
ORF Size: 2925 bp

OTI Disclaimer:	The molecular sequence of this clone aligns with the gene accession number as a point of reference only. However, individual transcript sequences of the same gene can differ through naturally occurring variations (e.g. polymorphisms), each with its own valid existence. This clone is substantially in agreement with the reference, but a complete review of all prevailing variants is recommended prior to use. More info
OTI Annotation:	This clone was engineered to express the complete ORF with an expression tag. Expression varies depending on the nature of the gene.
Components:	The ORF clone is ion-exchange column purified and shipped in a 2D barcoded Matrix tube containing 10ug of transfection-ready, dried plasmid DNA (reconstitute with 100 ul of water).
Reconstitution Method:	<ol style="list-style-type: none">1. Centrifuge at 5,000xg for 5min.2. Carefully open the tube and add 100ul of sterile water to dissolve the DNA.3. Close the tube and incubate for 10 minutes at room temperature.4. Briefly vortex the tube and then do a quick spin (less than 5000xg) to concentrate the liquid at the bottom.5. Store the suspended plasmid at -20°C. The DNA is stable for at least one year from date of shipping when stored at -20°C.
RefSeq:	NM_024618.4
RefSeq Size:	3777 bp
RefSeq ORF:	2928 bp
Locus ID:	79671
UniProt ID:	Q86UT6
Cytogenetics:	11q23.3
Domains:	LRR, LRR_RI
Protein Pathways:	RIG-I-like receptor signaling pathway
MW:	107.6 kDa
Gene Summary:	The protein encoded by this gene is a member of the NLR family and localizes to the outer mitochondrial membrane. The encoded protein is a regulator of mitochondrial antiviral responses. Three transcript variants encoding the same protein have been found for this gene. [provided by RefSeq, Aug 2013]

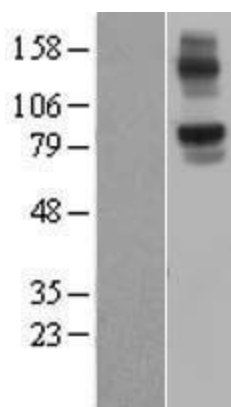
Product images:



Circular map for RC211111



HEK293T cells were transfected with the pCMV6-ENTRY control (Cat# [PS100001], Left lane) or pCMV6-ENTRY NLRX1 (Cat# RC211111, Right lane) cDNA for 48 hrs and lysed. Equivalent amounts of cell lysates (5 ug per lane) were separated by SDS-PAGE and immunoblotted with anti-NLRX1 (Cat# [TA809764])(1:2000). Positive lysates [LY403011] (100ug) and [LC403011] (20ug) can be purchased separately from OriGene.



Western blot validation of overexpression lysate (Cat# [LY403011]) using anti-DDK antibody (Cat# [TA50011-100]). Left: Cell lysates from untransfected HEK293T cells; Right: Cell lysates from HEK293T cells transfected with RC211111 using transfection reagent MegaTran 2.0 (Cat# [TT210002]).