

## Product datasheet for **RC211110**

### CDYL (NM\_170751) Human Tagged ORF Clone

#### Product data:

Product Type:	Expression Plasmids
Product Name:	CDYL (NM_170751) Human Tagged ORF Clone
Tag:	Myc-DDK
Symbol:	CDYL
Synonyms:	CDYL1, MGC131936, DKFZp586C1622
Mammalian Cell Selection:	Neomycin
Vector:	pCMV6-Entry (PS100001)
E. coli Selection:	Kanamycin (25 ug/mL)



[View online »](#)

**ORF Nucleotide Sequence:**

>RC211110 ORF sequence  
 Red=Cloning site Blue=ORF Green=Tags(s)

TTTTGTAATACGACTCACTATAGGGCGGCCGGAATTCGTCGACTGGATCCGGTACCGAGGAGATCTGCC  
 GCC**CGCATCGCC**

ATGGCTTCCGAGGAGCTGTACGAGTTGAAAGGATTGTTGACAAAAGGAAAAATAAAAAAGGAAGACAG  
 AGTATTTGGTTCCGTGGAAAGGCTATGACAGCGAGGACGACACTTGGGAGCCGGAACAGCACCTCGTGAA  
 CTGTGAGGAATACATCCACGACTTCAACAGACGCCACACGGAGAAGCAGAAGGAGAGCACATTGACCAGA  
 ACAAACAGGACCTCTCCCAACAATGCTAGGAAACAAATCTCCAGATCCACCAACAGCAACTTTTCTAAGA  
 CCTCTCTAAGGCACTCGTGATTGGGAAAGACCACGAATCCAAAAACAGCCAGCTGTTTGTGCCAGCCA  
 GAAGTTCAGGAAGAACACAGCTCCATCTCTCCAGCCGGAAGAACATGGACCTAGCGAAGTCAGGTATC  
 AAGATCCTCGTCCTAAAAGCCCCGTTAAGAGCAGGACCCGAGTGGACGGCTTTCAGAGCGAGAGCCCTG  
 AGAACTGGACCCCGTCGAGCAGGGTCAGGAGGACACAGTGGCACCCGAAGTGGCAGCGGAAAAGCCGT  
 CGGAGCTTTATTGGGCCCGGTCCGAGAGGGCCAGGATGGGAGCAGGCCAGGATACACCCACTAGTG  
 CCTCAGGTGCCCGGCCCTGTGACTGCAGCCATGGCCACAGGCTTAGCTGTTAACGGGAAAGGTACATCTC  
 CGTTCATGGATGCATTAACAGCCAATGGGACAACCAACATACAGACATCTGTTACAGGAGTGACTGCCAG  
 CAAAAGGAAATTTATTGACGACAGAAGAGACCAGCCTTTTGACAAGCGATTGCGTTTCAGCGTGAGGCAA  
 ACAGAAAGTGCCTACAGATACAGAGATATTGTGGTCAGGAAGCAGGATGGCTTCACCCACATCTTGTAT  
 CCACAAAGTCTCAGAGAATAACTCACTAAATCCAGAGGTAATGAGAGAAGTCCAGAGTGCCTGAGCAC  
 GGCCGCTGCCGATGACAGCAAGCTGGTACTGCTCAGCGCCGTGGCAGCGCTTCTGTGTTGGACTTGAC  
 TTTATTTATTTATACGACGCTGACAGATGACAGGAAAAGAGAAAGCACTAAAAAGGCAGAGCTATCA  
 GAAACTCGTGAATACTTTCATTAATTAAGAAGCCATTATTGTAGCAGTCAATGGCCAGCCATTGG  
 TCTAGGACATCTATATTGCCTCTTGGCATGTGGTTTGGGCTAATGAAAAGGCTTGGTTTCAAACACCC  
 TATACCACCTTCGGACAGAGTCCAGATGGCTGTTCTACCGTTATGTTTCCAAGATAATGGGAGGAGCAT  
 CTGCAAACGAGATGCTGCTCAGTGGACGGAAGCTGACAGCGCAGGAGGCGTGTGGCAAGGCCTGCTC  
 CCAGGTGTTTTGGCCGGGACGTTCACTCAGGAAGTGATGGTTCGCATTAAGGAGCTTGCCTCGTCAAT  
 CCAGTTGTGCTTGAGGAATCCAAAGCCCTCGTGCCTGCAACATGAAGATGGAGCTGGAGCAGGCCAACG  
 AGAGGGAGTGTGAGGTGCTGAAGAAAATCTGGGGCTCGGCCAGGGGATGGACTCCATGTTAAAGTACTT  
 GCAGAGGAAGATCGATGAGTTC

**ACGCGT**ACGCGGCCGCTCGAGCAGAACTCATCTCAGAAGAGGATCTGGCAGCAAATGATATCCTGGATT  
 ACAAGGATGACGACGATAAGGTTTAA

**Protein Sequence:**

>RC211110 protein sequence  
 Red=Cloning site Green=Tags(s)

MASEELYEVERIVDKRKNKKGKTEYLVRWKGYDSEDDTWEPEQHLVNCEEYIHDFNRRHTEKQKESTLTR  
 TNRTSPNNARKQISRSTNSNFSKTSFKALVIGKDHEKNSQLFAASQKFRKNTAPSLSSRKNMDLAKSGI  
 KILVPKSPVKSRTAVDGFQSESPKLDPVEQGGEDTVAPEVAAEKVPGALLGPGAERARMGSRPRIHPLV  
 PQVPGPVTAAMATGLAVNGKGTSPFMDALTANGTTNIQTSVTGVTASKRKFIDRRDQPFDKRLRFVSRQ  
 TESAYRYRDIIVRKQDGFTHILLSTKSENNSLNPEVMREVQSALSTAAADSKLVLLSAVGSVFCCGLD  
 FIYFIRRLTDDRKRETKMAEAI RNFNVTFIQFKKPIIVAVNGPAIGLGASILPLCDVVWANAKAWFQTP  
 YTTFGQSPDGCSTVMFPKIMGGASANEMLLSGRKLTAEACGKGLVSQVFWPGTFTEVVMVRIKELASCN  
 PVVLEESKALVRCNMKMELEQANERECEVLKKIWGSAQGMDSMLKYLQRKIDEF

**TR**TRPLEQKLISEEDLAANDILDYKDDDDKV

**Chromatograms:**

[https://cdn.origene.com/chromatograms/mk6727\\_e05.zip](https://cdn.origene.com/chromatograms/mk6727_e05.zip)

**Restriction Sites:**

Sgfl-MluI

**Cloning Scheme:**

**ACCN:** NM\_170751

**ORF Size:** 1632 bp

**OTI Disclaimer:** The molecular sequence of this clone aligns with the gene accession number as a point of reference only. However, individual transcript sequences of the same gene can differ through naturally occurring variations (e.g. polymorphisms), each with its own valid existence. This clone is substantially in agreement with the reference, but a complete review of all prevailing variants is recommended prior to use. [More info](#)

**OTI Annotation:** This clone was engineered to express the complete ORF with an expression tag. Expression varies depending on the nature of the gene.

**Components:** The ORF clone is ion-exchange column purified and shipped in a 2D barcoded Matrix tube containing 10ug of transfection-ready, dried plasmid DNA (reconstitute with 100 ul of water).

**Reconstitution Method:**

1. Centrifuge at 5,000xg for 5min.
2. Carefully open the tube and add 100ul of sterile water to dissolve the DNA.
3. Close the tube and incubate for 10 minutes at room temperature.
4. Briefly vortex the tube and then do a quick spin (less than 5000xg) to concentrate the liquid at the bottom.
5. Store the suspended plasmid at -20°C. The DNA is stable for at least one year from date of shipping when stored at -20°C.

**RefSeq:** [NM\\_170751.1](#), [NP\\_736607.1](#)
**RefSeq Size:** 3477 bp

**RefSeq ORF:** 1634 bp

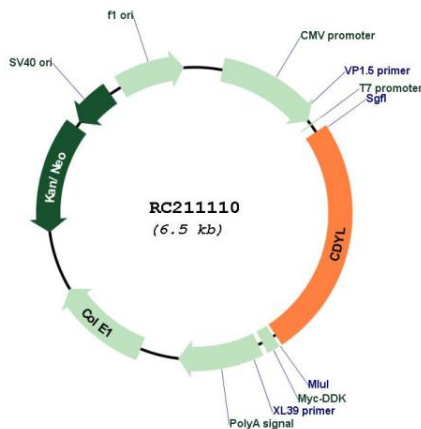
**Locus ID:** 9425

**Cytogenetics:** 6p25.1

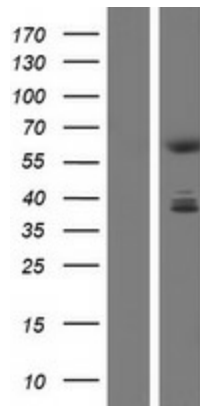
**MW:** 60.6 kDa

**Gene Summary:** Chromodomain Y is a primate-specific Y-chromosomal gene family expressed exclusively in the testis and implicated in infertility. Although the Y-linked genes are testis-specific, this autosomal gene is ubiquitously expressed. The Y-linked genes arose by retrotransposition of an mRNA from this gene, followed by amplification of the retroposed gene. Proteins encoded by this gene superfamily possess a chromodomain, a motif implicated in chromatin binding and gene suppression, and a catalytic domain believed to be involved in histone acetylation. Multiple proteins are encoded by transcript variants of this gene. [provided by RefSeq, Jul 2008]

**Product images:**



Circular map for RC211110



Western blot validation of overexpression lysate (Cat# [LY406868]) using anti-DDK antibody (Cat# [TA50011-100]). Left: Cell lysates from untransfected HEK293T cells; Right: Cell lysates from HEK293T cells transfected with RC211110 using transfection reagent MegaTran 2.0 (Cat# [TT210002]).