

Product datasheet for **RC211108**

TYSND1 (NM_173555) Human Tagged ORF Clone

Product data:

Product Type:	Expression Plasmids
Product Name:	TYSND1 (NM_173555) Human Tagged ORF Clone
Tag:	Myc-DDK
Symbol:	TYSND1
Synonyms:	NET41
Mammalian Cell Selection:	Neomycin
Vector:	pCMV6-Entry (PS100001)
E. coli Selection:	Kanamycin (25 ug/mL)



[View online »](#)

ORF Nucleotide Sequence:

>RC211108 representing NM_173555
 Red=Cloning site Blue=ORF Green=Tags(s)

TTTTGTAATACGACTCACTATAGGGCGGCCGGGAATTCGTCGACTGGATCCGGTACCGAGGAGATCTGCC
 GCC**GCGATCGCC**

ATGAGAAGGCAGTGGGGTCTGCCATGAGGGCGGCCGAGCAGCGGGCTGCATGGTGAAGCGCTCCCGGG
 CCGGACAGCCGAGGCGGGCCCGTGGAGCTGCAGCGGGTAATCCTGAGCCGTAGCCCGGGCCTGGTGCT
 TTGCCACGGGGCATCTTCGTCCTCTCGCAGCTGGCAGCGAAGTCCTGACCGCGCCGCGCGCTC
 TTCCTGCCTGGCAGAGTTGCAGGGACGACCTGCGCTGCACGTGCAGTGGGCCCAACGGCCGCGGGT
 CCGGGGGCGCGGAGCGGGCCGCCAGGGCTGTGCACGCCCCAGTGCAGCGAGCTCGAGCCCGGCC
 ACCTGCCCGTCCCGGGCGTCCCTGCAGCCCCGGCTTCTGCTGAGCTGCTGCTGCTGAGTGC
 CCGGCTTCTGGGCCACTTCGCGCCTCTTCGGGACGAGGCAGCGAACAGTGGCGTCTCGAGCG
 CGGCGCGGATGACGAAGTGTGGAGGACGAGGAGCGGATCAACTGAGAGCGCTGGGCTGTTTGCCT
 GCTGGCGTGCAGCTAGCCAGGAGGAGTGGAGGAGCGCGGCCAGCCATGGCGGTGTCGCCTCTC
 GGGCCGTGCCAAGGGTGCCTTGTGGTCTGCGGCTCCCTTTTCGGCGCTTCTGCCCGACATCT
 TTCTCAACACGCTGAGCTGCGGGTGTCTAGCAACGTGGCCGGCCACTGCTGCTTACCGACGCAGCTG
 CCTGCCCGCACCGAGGGCGCGCGTGTTCACCGCGCGCCCGCGGGGGCGTGGTGGCGCTGGTGGT
 GCGCCGCTCTGTTGGAAGCCGGCGAATGGGTGGGCTTACGCTGCTCTGCGCCCGCCCGCCCTTTTC
 GCGCCGCCCGCAGCGCTTACCGCTGCCGCACAGCACCGTCCCTGGCCCGCTTCTGCCCGCAGA
 GGTGGCGTCCGTGGGTCTGCCCTCCGAGACTCCGGGCCCTGTGGGAGCCCGCGCAGTGTGGT
 GAGTGGCGCACCGTATGGGGTCCGGAGTGGCTGTGGCACCCCGCTTGTAGTACCTGTCCGCAGTGT
 CCCCTCGGAAGCAGCCAGGGTCTGGTGCCTCCACCACCCCAAGAGTGTGGCCATCTGGGGCGGT
 GGTATTTGCCACTCAGGAGACATGTCCTATGACATAGCAGTGGTGGAGCTGGAGGAGGACCTGGATGAT
 GTCCCATCCCTGTGCCGCTGAGCACTTCCATGAAGGCAGGCTGTGAGTGTGGTGGGCTTTGGCGTCT
 TTGGCCAGTCTTGGGGCCCTCGGTGACCTCAGGCATCCTTTGGCTGTGGTGCAGGTGAATGGCAGCC
 CGTAATGCTGCAGACCAGTGTGCTGTGCACAGCGCTCCAGTGGGGACCCCTTCTCCAACCACTCA
 GGAAACCTCCTTGGCATAATCACCAGCAACACCCGGGACAATAACGGGGGCCACCTACCCCACTGA
 ACTTCAGATTCCATCACGGTGTCCAGCCGGCCCTGCAGCAGTACAGCCAGACCAAGACCTAGGTGG
 CCTCCGTGAGCTGGACCGCGTGTGAGCCAGTACGGTGGTGTGGCGTTCAGCGGCCCTGGCAGAG
 GCCCGCGGAGCAAGCTC

ACGCGTACGCGGGCCGCTCGAGCAGAACTCATCTCAGAAGAGGATCTGGCAGCAAATGATATCCTGGATT
 ACAAGGATGACGACGATAAGGTTTAA

Protein Sequence:

>RC211108 representing NM_173555
 Red=Cloning site Green=Tags(s)

MRRQWSAMRAEQAGCMVSASRAGQPEAGPWSOSVILSRSPGLVLCGGIFVFPFLRAGSEVLTAAAV
 FLPGDSCRDDLRLHVQWAPTAAGPGGAERGRPLCTPQCASLEPGPPAPSRGRPLQPRLPALLLLLSC
 PAFWAHFAFLFGDEAAEQWRFSSAARDDEVSEDEADQLRALGWFAALLGVRLQEEVEEERGPAMAVSPL
 GAVPKGAPLLVCGSPFGAFCPDIFLNTLSCGVL SNVAGPLLLTDARCLPGTEGGGVFTARPAGALVALVV
 APLCWKAGEWVGFLLCAAAPL FRAARDALHRLPHSTAALAALLPPEVGVWGLPLRDSGPLWAAAVALV
 ECGTVWGSVAVAPRLVVTCTRHVSPREARVLVRSTTPKSVAIWGRVVFATQETCPYDIAVVSLEEDLDD
 VPIPVPAEHFHEGEAVSVVGFVGFQSCGPSVTSGILSAVVQVNGTPVMLQTTCAVHSGSSGGPLFSNHS
 GNLLGIITSNTRDNTGATYPHLNFSIPITVLQPALQQYSQTQDLGGLRELDRAAEPVRVWRLQRPLAE
 APRSKL

TRTRPLEQKLISEEDLAANDILDYKDDDDKV

Chromatograms:

https://cdn.origene.com/chromatograms/mk8104_c02.zip

Restriction Sites:

Sgfl-Mlul

Cloning Scheme:


ACCN: NM_173555

ORF Size: 1698 bp

OTI Disclaimer: The molecular sequence of this clone aligns with the gene accession number as a point of reference only. However, individual transcript sequences of the same gene can differ through naturally occurring variations (e.g. polymorphisms), each with its own valid existence. This clone is substantially in agreement with the reference, but a complete review of all prevailing variants is recommended prior to use. [More info](#)

OTI Annotation: This clone was engineered to express the complete ORF with an expression tag. Expression varies depending on the nature of the gene.

Components: The ORF clone is ion-exchange column purified and shipped in a 2D barcoded Matrix tube containing 10ug of transfection-ready, dried plasmid DNA (reconstitute with 100 ul of water).

Reconstitution Method:

1. Centrifuge at 5,000xg for 5min.
2. Carefully open the tube and add 100ul of sterile water to dissolve the DNA.
3. Close the tube and incubate for 10 minutes at room temperature.
4. Briefly vortex the tube and then do a quick spin (less than 5000xg) to concentrate the liquid at the bottom.
5. Store the suspended plasmid at -20°C. The DNA is stable for at least one year from date of shipping when stored at -20°C.

RefSeq: [NM_173555.4](#)

RefSeq Size: 3802 bp

RefSeq ORF: 1701 bp

Locus ID: 219743

UniProt ID: [Q2T9J0](#)

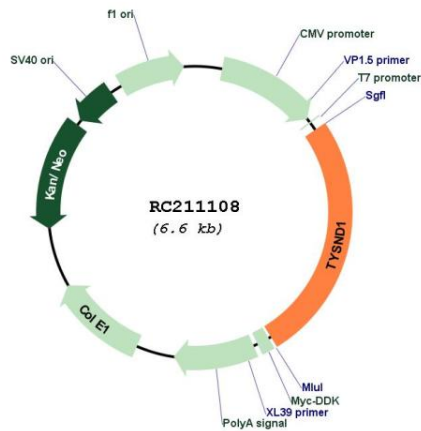
Cytogenetics: 10q22.1

Protein Families: Druggable Genome

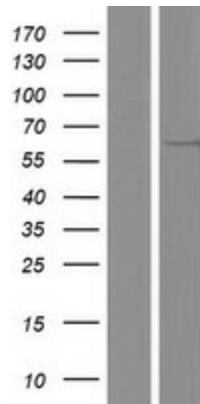
MW: 59.3 kDa

Gene Summary: This gene encodes a protease that removes the N-terminal peroxisomal targeting signal (PTS2) from proteins produced in the cytosol, thereby facilitating their import into the peroxisome. The encoded protein is also capable of removing the C-terminal peroxisomal targeting signal (PTS1) from proteins in the peroxisomal matrix. The full-length protein undergoes self-cleavage to produce shorter, potentially inactive, peptides. Alternative splicing results in multiple transcript variants for this gene. [provided by RefSeq, Jan 2013]

Product images:



Circular map for RC211108



Western blot validation of overexpression lysate (Cat# [LY406466]) using anti-DDK antibody (Cat# [TA50011-100]). Left: Cell lysates from untransfected HEK293T cells; Right: Cell lysates from HEK293T cells transfected with RC211108 using transfection reagent MegaTran 2.0 (Cat# [TT210002]).