

## Product datasheet for **RC211101**

### GCET1 (SERPINA9) (NM\_175739) Human Tagged ORF Clone

#### Product data:

Product Type:	Expression Plasmids
Product Name:	GCET1 (SERPINA9) (NM_175739) Human Tagged ORF Clone
Tag:	Myc-DDK
Symbol:	GCET1
Synonyms:	GCET1; SERPINA11; SERPINA11b
Mammalian Cell Selection:	Neomycin
Vector:	pCMV6-Entry (PS100001)
E. coli Selection:	Kanamycin (25 ug/mL)



[View online »](#)

**ORF Nucleotide Sequence:**

>RC211101 ORF sequence  
 Red=Cloning site Blue=ORF Green=Tags(s)

TTTTGTAATACGACTCACTATAGGGCGGCCGGAATTCGTCGACTGGATCCGGTACCGAGGAGATCTGCC  
 GCC**CGATCGCC**

ATGCAAGGACAGGGCAGGAGAAGAGGAACCTGCAAAGACATATTTTGTTCAAAAATGGCATCTTACCTTT  
 ATGGAGTACTCTTTGCTGTTGGCCTCTGTGCTCCAATCTACTGTGTGCCCGGCCAATGCCCCAGTGC  
 ATACCCCGCCCTTCTCCACAAAAGAGCACCCCTGCCTCACAGGTGATTCCCTCAACACCGACTTTGCC  
 TTCCGCCTATACCGCAGGCTGGTTTTGGAGACCCGAGTCAGAACATCTTCTTCCCCTGTGAGTGTCT  
 CCACCTTCCCTGGCCATGCTCTCCCTTGGGGCCACTCAGTCACCAAGACCCAGATTCTCCAGGGCCTGGG  
 CTTCAACCTCACACACACCAGAGTCTGCCATCCACCAGGGCTCCAGCACCTGGTTCACTCACTGACT  
 GTTCCCAGCAAAGACCTGACCTGAAGATGGGAAGTGCCTCTTCGTCAAGAAGGAGCTGCAGCTGCAGG  
 CAAATTTCTTGGCAATGTCAAGAGGCTGTATGAAGCAGAAGTCTTTTCTACAGATTTCTCAACCCCTC  
 CATTGCCAGGCGAGGATCAACAGCCATGTGAAAAGAAGACCCAAGGGAAGTTGTAGACATAATCCAA  
 GGCTTGAACCTTCTGACGGCCATGGTTCTGGTGAACCACATTTTCTTTAAAGCCAAGTGGGAGAAGCCCT  
 TTCACCCTGAATATAAAGAAAGAACTCCCATTCCTGGTGGGCGAGCAGGTCACTGTGCATGTCCCAT  
 GATGCACCAGAAAAGAGCAGTTCCGCTTTTGGGGTGGATACAGAGCTGAAGTCTTTGTGCTGCAGATGGAT  
 TACAAGGGAGATGCCGTGGCCTTCTTTGTCTCCCTAGCAAGGGCAAGATGAGGCAACTGGAACAGGCCCT  
 TGTCAGCCAGAACTGAGAAAGTGGAGCCACTCACTCCAGAAAAGTGGATAGAGGTGTTTATCCCCAG  
 ATTTTCCATTTCTGCCTCCTACAATCTGAAAACCATCTCCCGAAGATGGGCATCCAAAATGTCTTTGAC  
 AAAATGCTGATTTTCTGGAATTGCAAAGAGAGACTCCCTGCAGTTTCTAAAGCAACCCACAAGGCTG  
 TGCTGGATGTCAGTGAAGAGGGCACTGAGGCCACAGCAGCTACCACCACCAAGTTCATAGTCCGATCGAA  
 GGATGGCCCTTACTTCACTGTCTCCTTCAATAGGACCTTCCGTGATGATTACAAAATAAGCCACA  
 GACGGTATTCTTTCTAGGAAAAGTGGAAAATCCCACTAAATCC

**ACGCGT**ACGCGGCCGCTCGAGCAGAAACTCATCTCAGAAGAGGATCTGGCAGCAATGATATCCTGGATT  
 ACAAGGATGACGACGATAAGGTTTAA

**Protein Sequence:**

>RC211101 protein sequence  
 Red=Cloning site Green=Tags(s)

MQGQRRRGRTCKDIFCSKMASYLYGVLFVGLCAPIYCVSPANAPSAYPRPSSTKSTPASQVYSLNTDFA  
 FRLYRRLVLETSPQNIFFSPVSVSTSLAML SLGAHSVTKTQILQGLGFNL THTPESAIHQGFQHL VHSLT  
 VPSKDL TLKMGSAL FVKKELQLQANFLGNVKRL YEAEVFSTDFSNPSIAQARINSHVKKKTQGKVVDIIQ  
 GLDLLTAMVLVNHIFFKAKWEKPFHPEYTRKNFPFLVGEQVTVHVPMMHQKEQFAFGVDTELNCFVLQMD  
 YKGDVAFFVLP SKGKMRQLEQAL SARTLRKWSHSLQKRWIEVFIPRFSISASYNLETILPKMGIQNVFD  
 KNADFSGIAKRDSLQVSKATHKAVLDVSEEGTEATAATTKFIVRSKDGPSYFTVSVNRTFLMMITNKAT  
 DGILFLGKVENPTKS

**TR**TRPLEQKLISEEDLAANDILDYKDDDDKV

**Chromatograms:**

[https://cdn.origene.com/chromatograms/mk6378\\_b05.zip](https://cdn.origene.com/chromatograms/mk6378_b05.zip)

**Restriction Sites:**

Sgfl-Mlul

**Cloning Scheme:**

**ACCN:** NM\_175739

**ORF Size:** 1305 bp

**OTI Disclaimer:** The molecular sequence of this clone aligns with the gene accession number as a point of reference only. However, individual transcript sequences of the same gene can differ through naturally occurring variations (e.g. polymorphisms), each with its own valid existence. This clone is substantially in agreement with the reference, but a complete review of all prevailing variants is recommended prior to use. [More info](#)
**OTI Annotation:** This clone was engineered to express the complete ORF with an expression tag. Expression varies depending on the nature of the gene.

**Components:** The ORF clone is ion-exchange column purified and shipped in a 2D barcoded Matrix tube containing 10ug of transfection-ready, dried plasmid DNA (reconstitute with 100 ul of water).

**Reconstitution Method:**

1. Centrifuge at 5,000xg for 5min.
2. Carefully open the tube and add 100ul of sterile water to dissolve the DNA.
3. Close the tube and incubate for 10 minutes at room temperature.
4. Briefly vortex the tube and then do a quick spin (less than 5000xg) to concentrate the liquid at the bottom.
5. Store the suspended plasmid at -20°C. The DNA is stable for at least one year from date of shipping when stored at -20°C.

**RefSeq:** [NM\\_175739.3](#), [NP\\_783866.2](#)
**RefSeq Size:** 1851 bp

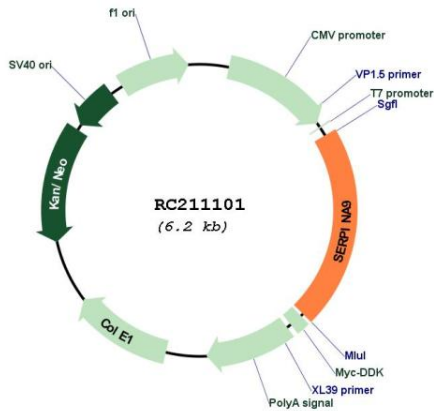
**RefSeq ORF:** 1254 bp

**Locus ID:** 327657

**UniProt ID:** [Q86WD7](#)
**Cytogenetics:** 14q32.13

**Protein Families:** Druggable Genome, Secreted Protein, Transmembrane  
**MW:** 48.6 kDa  
**Gene Summary:** Protease inhibitor that inhibits trypsin and trypsin-like serine proteases (in vitro). Inhibits plasmin and thrombin with lower efficiency (in vitro).[UniProtKB/Swiss-Prot Function]

**Product images:**



Circular map for RC211101