

Product datasheet for RC211091

INPP5F (NM_014937) Human Tagged ORF Clone

Product data:

Product Type:	Expression Plasmids
Product Name:	INPP5F (NM_014937) Human Tagged ORF Clone
Tag:	Myc-DDK
Symbol:	INPP5F
Synonyms:	hSAC2; MSTP007; MSTPO47; SAC2
Mammalian Cell Selection:	Neomycin
Vector:	pCMV6-Entry (PS100001)
E. coli Selection:	Kanamycin (25 ug/mL)
ORF Nucleotide Sequence:	>RC211091 representing NM_014937 Red=Cloning site Blue=ORF Green=Tags(s)

TTTTGTAATACGACTCACTATAGGGCGGCCGGAATTCGTCGACTGGATCCGGTACCGAGGAGATCTGCC
GCC**CGATCGCC**

ATGGAGCTCTTCCAAGCCAAGGACCACTACATCCTGCAGCAGGGCGAGCGCGCTGTGGTGCAGCCGCC
GCGACGGCGGCCCTCCAGCTCCGACCCGCTACTGATCTACTTCTTGCCCTGGAATCCCATTTGTTGGGGTT
GGTAGAAGGTGTTATTGGGAAAATCAACTTCATTAGATCTCCATGGTGGCTTATTCTAATTCGGCAG
AAAGCATTGGTGGCAAACCTCCAGGAGACCATGAGGTCTGTAAGTTACAAAATGCTGTGCTCTCAC
TTTCTGAAATGGAACCTCAGGATCTTGAGCTAGAGCTCTGTAAGAAGCATCATTTTGGTATTAACAACCC
AGAGAAGATCATACCATCTCCTGATGACTCAAAGTTTCTACTGAAGACCTTTACGCATATTAATCCAAT
GTGCTGCTCCTAATAAAAAGAAAGTTAAGGAAAGTAAAGAGAAGGAGAAGTTGGAGAGGAGATTCTTG
AAGAGTTGCTGAAGATGTTTCATGGACTCAGAATCCTTTTATTATAGCTTGACCTATGACCTGACCAATTC
CGTGCAGAGGCAGAGCACTGGGGAGAGGGACGGTCGGCCCTCTGGCAGAAGGTTGATGACCGATTTTTT
TGGAAATAATACATGATAAAGATCTTACTGAGATTGGTACTCCAGATGTGGACTTTTGGATTATCCCCA
TGATCCAAGGTTTTGTGCAGATTGAAGAACTTGTGGTTAATTATACCGAATCATCTGATGATGAGAAAAG
CAGCCCAGAGACCCCTCAGGAGTCCACCTGTGTAGATGATATCCACCACGATTTCTAGTGGCTCTC
ATTTACGCGCAAGTAGGCACAGAGCAGGAATGCGCTATAAACGAAGAGGAGTGGATAAAAAATGGAATG
TTGCCAATTATGTGGAGACTGAGCAGTTGATTCATGTTTCATAATCATACCCTGTCAATTTGTTCAAACAG
AGGCTCTGTGCTGTCTTTGGAGCCAGGTTGGGTATCGATATAACCCAAGACCGCGCTGGACAGAAGT
GAAAAGGAAACTGTTGCCTATTTCTGTGCCATTTGGAAGAACAACCTGAACATTTACAAAAACAGGTTA
TTATTAACCTGGTAGACCAGGCAGGAAGAGAGAAGGTTATTGGCGATGCTTACCTGAAGCAAGTGTGCT
TTTCAACAACCTCACACCTCACTTACGTTTCGTTTGACTTCCATGAGCACTGCCGAGGAATGAAGTTTGAG
AATGTTTCAGACACTAACAGATGCCATTTATGACATTATTCTTGATATGAAGTGGTGTGGGTTGATGAAG
CTGGGGTAAATATGTAAGCAGGAAGGATTTTTCGTGTTAATTGTATGGACTGCCTGGATCGCACCAACGT
GGTCCAAGCTGCCATCGCAGAGTGGTCATGGAACAGCAGCTGAAAAAATTAGGTGTGATGCCCCGGAA



[View online >](#)

CAGCCATTACCTGTGAAATGTAATCGCATCTACCAGATAATGTGGGCAATAATGGTGACTCCATTAGCA
GACAGTATGCTGGGACAGCTGCTCTGAAGGGTGACTTTACAAGGACAGGAGAAAGGAAGTTAGCAGGAGT
TATGAAAGATGGAGTGAAGTCAAGCAACAGATATTACCTCAACCGATTTAAGGATGCTTATAGGCAAGCT
GTTATAGATTTGATGCAAGGCATTCCAGTGACAGAAGATCTTTATTCCATATTTACCAAGGAGAAAGAAC
ATGAAGCTTTGCATAAAGGAAAATCAGAGAAGCCACCAGGAATAATTAGCCAGCTTTACAAAGTTACAT
GAAGTTACTACTGCCTGATGATGAGAAGTTCATGGGGGCTGGGCCCTCATTGACTGTGACCTTAGCCTC
ATTGATGCTACTCACAGAGACGTGGATGTGCTGTTACTGCTTTCTAACTCTGCCTACTACGTGGCCTATT
ATGATGATGAAGTTGATAAAGTAAACCAGTATCAACGACTAAGTCTAGAAAACCTGGAAAAATTGAAAT
AGGCCCTGAACCCACTCTTTTTGGTAAGCCAAAGTTCTCCTGCATGCGACTGCACTACAGATACAAAGAA
GCGAGTGGCTATTTCCACACATTGCGAGCTGTAATGCGTAATCCTGAAGAGGATGAAAAAGATACCCCTC
AGTGCATTGCAGAGATGCTGCAGATCACCAAGCAAGCCATGGGATCGGATTTACCCATAATTGAGAAGAA
ACTTGAGAGGAAGAGCAGTAAACCTCACGAAGACATCATTGGTATCAGGTCTCAAACCAAGTTCTTTG
GCCAGGAAAGAATTTTTAATGAGCAAATTTTCATCTCTAAATCAAAAAGTGAAGCAGACCAAATCCA
ATGTAATATTGGCAACCTCCGAAAGCTAGGAACTTTACCAAACCTGAAATGAAAGTTAACTTTCTAAA
ACCAAACCTAAAAGTAAATCTTTGGAAATCAGATAGTAGTCTTGAACCTATGGAAAACACAGGAGTGATG
GATAAGGTTCAGGCAGAGTCTGATGGGGACATGTCTTCAGATAATGACTCATACCACTCTGATGAATTCC
TTACAAATTCTAAGTCTGATGAAGACAGGCAGCTAGCTAACTCATTAGAGAGTGTAGGGCCAATAGATTA
CGTTCTTCTAGTTGTGGTATTATTGCCTCAGCGCCTCGATTGGGCAGTCGGTCCCAGTCTCTTAGCAGC
ACAGATAGTAGCGTTCATGCTCCTTCAGAGATTACTGTTGCTCATGGGAGTGGGCTTGAAAAAGGCCAGG
AGTCTCCTTTGAAGAAAAGTCTTCTGCTGGCGACGTACACATATTGACTGGCTTTGCCAAGCCTATGGA
TATTTACTGCCACAGATTTGTGCAAGATGCACAGAACAAGTGACCCACCTATCAGAGACCAGATCTGTG
TCTCAGCAGGCTAGTCAGGAAAGAAATCAAATGACCAATCAAGTTTCAGATGAAACCCAAATCAGAATCAA
CAGAACAGACACCTTCTCGGCCATCGCAATTAGATGTCTCTCTTTCTGCAACAGGCCACAGTTTTTTGTC
AGTTGAGCCAGCGCATTCAAGTTGCATCTCAAAAACCCCCACCTCCGCTTCCAGCATGCTTGAACCTGAG
ACAGGGCTTCATGTAACCTCTTCTCCTTCAGAGAGCAGTAGCAGCAGAGCAGTCTCTCCCTTTGCCAAGA
TTCGAAGTTCCATGGTCCAGGTTGCTAGTATTACCCAAGCTGGATTAACCCATGGGATAAACTTTGCAGT
GTCAAAAGTTCAGAAGAGTCTCCAGAACCTGAAATCATTAAATCAAGTCCAGCAAATGAACTTAAAAAG
ATGTTTATACAATGCCAGACACGGATAATTCAGATT

ACGCGTACGCGGCCGCTCGAGCAGAACTCATCTCAGAAGAGGATCTGGCAGCAAATGATATCCTGGATT
ACAAGGATGACGACGATAAGGTTTAA

Protein Sequence: >RC211091 representing NM_014937
Red=Cloning site Green=Tags(s)

MELFQAKDHYILQQGERALWCSRDDGGLQRPATDLLLAWNPICLGLVEGVIGKIQLHSDLPWWLILIRQ
 KALVGKLPGDHEVCKVTKIAVLSLSEMEPQDLELELCKKHHFGINKPEKIIPSPDDSKFLLKFTTHIKSN
 VSAPNKKVKESKEKEKLERRLLEELLKMFMDSESFYYSLYDLTNSVQRQSTGERDGRPLWQKVDDRRFF
 WNKYMIQDLTEIGTPDVDFWIIPMIQGFVQIEELVVNYTESSDDEKSSPETPPQESTCVDDIHPRFLVAL
 ISRRSRHRAGMRYKRRGVDKNGNVANYVETEQLIHVHNHTLSFVQTRGSVPVFWWSQVGYRYNPRRLDRS
 EKETVAYFCAHFEEQLNIYKKQVIINLVDQAGREKVIQDAYLKQVLLFNNSHLTYVVSDFHEHCRGMKFE
 NVQTLTDAIYDIILDMKWCWVDEAGVICKQEGIFRVNCDCLDRTNVVQAAIARVVMEQQLKKGVMPEPE
 QPLPVKCNRIYQIMWANNGDSISRQYAGTAALKGDFTRTGERKLAGVMKDGVNSANRYLNRFKDAYRQA
 VIDLMQGIPTVDLYSIFTKEKEHEALHKNQRSHQELISQLLQSYMKLLLPDDEKFHGGWALIDCDPSL
 IDATHRDVDVLLLLSNSAYYVAYDDEVDKVNQYQRLSLENLEKIEIGPEPTLFGKPKFSCMRHLHYRYKE
 ASGYFHTLRAVMRNPEDGKDTLQCIAEMLQITKQAMGSDLPIIEKKLERKSSKPHEDIIGIRSNQNGSL
 AQGKNFLMSKFSSLNQKVQTKSNVNIQNLRLGNFTKPEMKVNLKPNLKVNLWKSDDSSLETMENTGVM
 DKVQAEVDGDMSSDNDSYHSDEFLLTNSKSDERQLANSLESVGPIDYVLPSCGIIASAPRLGSRSSLSLSS
 TDSSVHAPSEITVAHGSLGKGQESPLKKSAGDVHILTGFAKPMDIYCHRFVQDAQNKVTHLSETRSV
 SQQASQERNQMTNQVSDETQSESTEQTSPRSQDLVSLSATGPQFLSVEPAHSVASQKTPTASSMLELE
 TGLHVTSPSESSSRVSPFAKIRSSMVQVASITQAGLTHGINFAVSKVQKSPPEPEIINQVQVQNELKK
 MFIQCQTRIIQI

TRTRPLEQKLISEEDLAANDILDYKDDDDKV

Chromatograms: https://cdn.origene.com/chromatograms/mg4166_f07.zip

Restriction Sites: SgfI-MluI

Cloning Scheme:

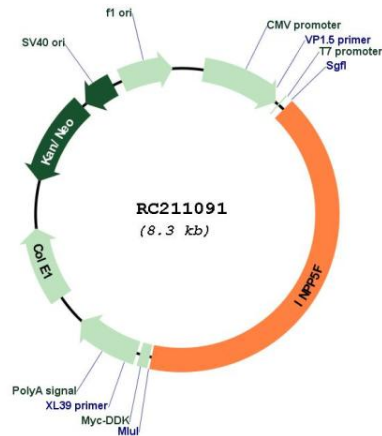


ACCN: NM_014937

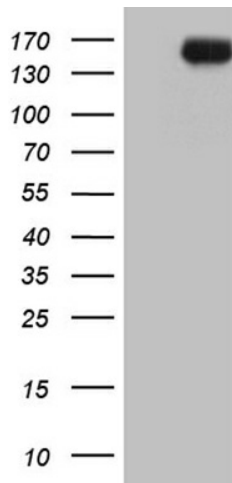
ORF Size: 3396 bp

OTI Disclaimer:	The molecular sequence of this clone aligns with the gene accession number as a point of reference only. However, individual transcript sequences of the same gene can differ through naturally occurring variations (e.g. polymorphisms), each with its own valid existence. This clone is substantially in agreement with the reference, but a complete review of all prevailing variants is recommended prior to use. More info
OTI Annotation:	This clone was engineered to express the complete ORF with an expression tag. Expression varies depending on the nature of the gene.
Components:	The ORF clone is ion-exchange column purified and shipped in a 2D barcoded Matrix tube containing 10ug of transfection-ready, dried plasmid DNA (reconstitute with 100 ul of water).
Reconstitution Method:	<ol style="list-style-type: none">1. Centrifuge at 5,000xg for 5min.2. Carefully open the tube and add 100ul of sterile water to dissolve the DNA.3. Close the tube and incubate for 10 minutes at room temperature.4. Briefly vortex the tube and then do a quick spin (less than 5000xg) to concentrate the liquid at the bottom.5. Store the suspended plasmid at -20°C. The DNA is stable for at least one year from date of shipping when stored at -20°C.
RefSeq:	NM_014937.4
RefSeq Size:	4955 bp
RefSeq ORF:	3399 bp
Locus ID:	22876
UniProt ID:	Q9Y2H2
Cytogenetics:	10q26.11
Domains:	Syja_N
Protein Families:	Druggable Genome
MW:	128.2 kDa
Gene Summary:	The protein encoded by this gene is an inositol 1,4,5-trisphosphate (InsP3) 5-phosphatase and contains a Sac domain. The activity of this protein is specific for phosphatidylinositol 4,5-bisphosphate and phosphatidylinositol 3,4,5-trisphosphate. Alternatively spliced transcript variants encoding multiple isoforms have been observed for this gene. [provided by RefSeq, Aug 2011]

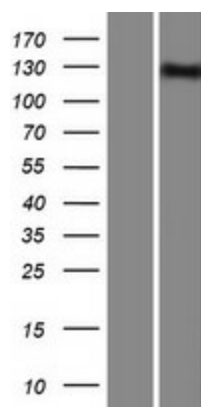
Product images:



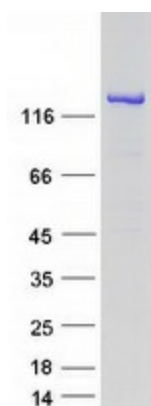
Circular map for RC211091



HEK293T cells were transfected with the pCMV6-ENTRY control (Cat# [PS100001], Left lane) or pCMV6-ENTRY INPP5F (Cat# RC211091, Right lane) cDNA for 48 hrs and lysed. Equivalent amounts of cell lysates (5 ug per lane) were separated by SDS-PAGE and immunoblotted with anti-INPP5F (Cat# [TA809925])(1:2000). Positive lysates [LY414903] (100ug) and [LC414903] (20ug) can be purchased separately from OriGene.



Western blot validation of overexpression lysate (Cat# [LY414903]) using anti-DDK antibody (Cat# [TA50011-100]). Left: Cell lysates from untransfected HEK293T cells; Right: Cell lysates from HEK293T cells transfected with RC211091 using transfection reagent MegaTran 2.0 (Cat# [TT210002]).



Coomassie blue staining of purified INPP5F protein (Cat# [TP311091]). The protein was produced from HEK293T cells transfected with INPP5F cDNA clone (Cat# RC211091) using MegaTran 2.0 (Cat# [TT210002]).