

Product datasheet for **RC211087**

NT5DC1 (NM_152729) Human Tagged ORF Clone

Product data:

Product Type:	Expression Plasmids
Product Name:	NT5DC1 (NM_152729) Human Tagged ORF Clone
Tag:	Myc-DDK
Symbol:	NT5DC1
Synonyms:	C6orf200; LP2642; NT5C2L1
Mammalian Cell Selection:	Neomycin
Vector:	pCMV6-Entry (PS100001)
E. coli Selection:	Kanamycin (25 ug/mL)



[View online »](#)

ORF Nucleotide Sequence:

>RC211087 ORF sequence
 Red=Cloning site Blue=ORF Green=Tags(s)

TTTTGTAATACGACTCACTATAGGGCGGCCGGGAATTCGTCGACTGGATCCGGTACCGAGGAGATCTGCC
 GCC**GCGATCGCC**

ATGGCTCAGCACTTCTCCCTGGCCGCTGCGACGTGGTCGGATTCGACCTGGACCACACTCTGTGTCGCT
 ACAACCTGCCCGAGAGCGCCCGCTCATTATAATAGCTTTGCCAGTTCCTAGTTAAGGAGAAAGGGTA
 CGATAAGGAATTGCTCAATGTGACCCAGAGGATTGGGATTTCTGTTGCAAAGGTTTGGCATTGGATCTA
 GAAGATGGGAACCTCCTTAAACTTGCAAATAATGGCACTGTTCTCAGGGCAAGCCATGGCACCAAGATGA
 TGAATCCAGAGGTGCTGGCAGAGGCATATGGCAAGAAAGAGTGGAAAGCACTTCTGTGCGGACACTGGAAT
 GGCTTGCCGCTCAGGAAAGTATTACTTTTACGACAACACTTTGACCTGCCAGGAGCTCTCTGTGTGCC
 AGGGTGGTGGACTATTTAACAAAACGAACAATGGTCAAAAAACATTTGATTTTTTGAAGGATATAGTTG
 CTGCTATAACAACAATTATAAAATGTCAGCTTTTAAAGGAAAACGTGGAATATATTTCCAGAAAATAAA
 AAGAGATCCAGGCAGATATTTACATAGTTGCTCCTGAATCTGTGAAAAATGGCTTCGACAGCTAAAGAAT
 GCTGGGAAAATCTTCTGTTAATTACCAGTTCTCACAGTGATTACTGTAGACTTCTCTGCGAATATATTC
 TTGGGAATGATTTTACAGACCTTTTGGACATTGTGATTACAAATGCATTGAAGCCTGGTTTCTTCTCCCA
 CTTACCAAGTCAGAGACCTTTCCGGACACTCGAGAATGATGAGGAGCAGGAGGCACTGCCATCTCTGGAT
 AAACCTGGCTGGTACTCCAAGGAAACGCTGTCCACCTCTATGAACCTTCTGAAGAAAATGACTGGCAAAAC
 CTGAACCAAGGTTGTTTATTTTGGTGACAGCATGCATTAGATATTTCCAGCTCGTCACTATAGTAA
 TTGGGAGACAGTCTCATCTGGAAGAACTCAGAGGGGATGAAGGCACGAGGAGTCAAGGCGCTGAGGAG
 TCAGAGCCTCTAGAGAAGAAAGGAAAATATGAGGGACAAAAGCAAAACCTTTAAATACTCATCTAAAA
 AATGGGCTCTTTTTTTTATTGATTGACTTTTGGGACTGGAAAATACAGAAGACTCCTTGGTTTATACATG
 GTCTTGTAAAGAAATCAGTACTTACAGCACTATTGCAATTCCTCAAGTATTGAAGCAATCGCAGAAATACCT
 CTGGACTACAAATTTACAAGATTCTCTCAAGCAATTCAAAAACAGCTGGCTACTATCCAATCCTCCAC
 TGGTCTTATCAAGTGATGAGACACTGATATCCAAA

ACGCGTACGCGGCCGCTCGAGCAGAAACTCATCTCAGAAGAGGATCTGGCAGCAATGATATCCTGGATT
 ACAAGGATGACGACGATAAGGTTTAA

Protein Sequence:

>RC211087 protein sequence
 Red=Cloning site Green=Tags(s)

MAQHFLAACDVVGFDLHTLCRYNLPESAPLIYNSFAQFLVKEKGYDKELLNVTPEWDFCCKGLALDL
 EDGNFLKLANNGTVLRASHGKMMTPEVLAAYGKKEWKHFLSDTGMACRSGKYFYFDNYFDLPGALLCA
 RVVDYLTKLNNGQKTFDFWKDIVAAIQHNYKMSAFKENCYIFPEIKRDPGRYLHSCPESVKKWLRQLKN
 AGKILLITSSHSYCRLLCEYILGNDFDLFDIVITNALKPGFFSHLPSQRPFRLENDDEEQEALPSLD
 KPGWYSQGNVHLYELLKMTGKPEPKVYVYFGDSMHSDIFPARHYSNWETVLIILEELRGDEGTRSQRPEE
 SEPLEKKGYEGPKAKPLNTSSKKWGSFFIDSVLGLNTEDESLVYTWCKRISTYSTIAIPISEIAIAPL
 LDYKFRFSSNSKTAGYYPNPLVLSDETLLISK

TRTRPLEQKLISEEDLAANDILDYKDDDDKV

Chromatograms:

https://cdn.origene.com/chromatograms/mk6006_d02.zip

Restriction Sites:

SgfI-MluI

Cloning Scheme:

Cloning sites used for ORF Shutting:



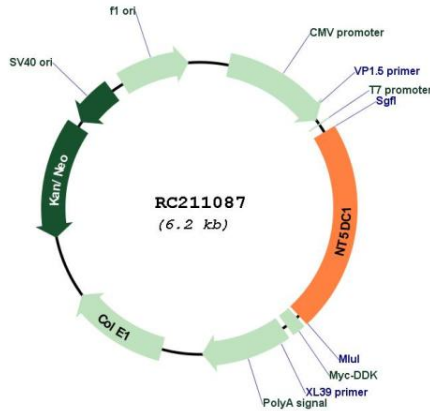
* The last codon before the Stop codon of the ORF

- ACCN:** NM_152729
- ORF Size:** 1365 bp
- OTI Disclaimer:** The molecular sequence of this clone aligns with the gene accession number as a point of reference only. However, individual transcript sequences of the same gene can differ through naturally occurring variations (e.g. polymorphisms), each with its own valid existence. This clone is substantially in agreement with the reference, but a complete review of all prevailing variants is recommended prior to use. [More info](#)
- OTI Annotation:** This clone was engineered to express the complete ORF with an expression tag. Expression varies depending on the nature of the gene.
- Components:** The ORF clone is ion-exchange column purified and shipped in a 2D barcoded Matrix tube containing 10ug of transfection-ready, dried plasmid DNA (reconstitute with 100 ul of water).
- Reconstitution Method:**
1. Centrifuge at 5,000xg for 5min.
 2. Carefully open the tube and add 100ul of sterile water to dissolve the DNA.
 3. Close the tube and incubate for 10 minutes at room temperature.
 4. Briefly vortex the tube and then do a quick spin (less than 5000xg) to concentrate the liquid at the bottom.
 5. Store the suspended plasmid at -20°C. The DNA is stable for at least one year from date of shipping when stored at -20°C.
- RefSeq:** [NM_152729.3](#)
- RefSeq Size:** 3193 bp
- RefSeq ORF:** 1368 bp
- Locus ID:** 221294
- UniProt ID:** [Q5TFE4](#)
- Cytogenetics:** 6q22.1

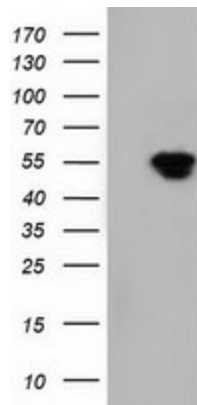
MW: 51.8 kDa

Gene Summary: While the exact function of the protein encoded by this gene is not known, it belongs to the 5'(3')-deoxyribonucleotidase family. [provided by RefSeq, May 2010]

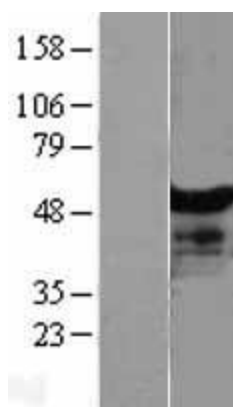
Product images:



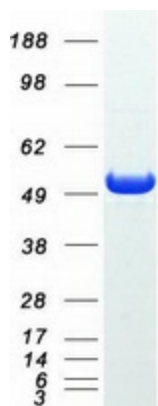
Circular map for RC211087



HEK293T cells were transfected with the pCMV6-ENTRY control (Cat# [PS100001], Left lane) or pCMV6-ENTRY NT5DC1 (Cat# RC211087, Right lane) cDNA for 48 hrs and lysed. Equivalent amounts of cell lysates (5 ug per lane) were separated by SDS-PAGE and immunoblotted with anti-NT5DC1 (Cat# [TA501590]). Positive lysates [LY403486] (100ug) and [LC403486] (20ug) can be purchased separately from OriGene.



Western blot validation of overexpression lysate (Cat# [LY403486]) using anti-DDK antibody (Cat# [TA50011-100]). Left: Cell lysates from untransfected HEK293T cells; Right: Cell lysates from HEK293T cells transfected with RC211087 using transfection reagent MegaTran 2.0 (Cat# [TT210002]).



Coomassie blue staining of purified NT5DC1 protein (Cat# [TP311087]). The protein was produced from HEK293T cells transfected with NT5DC1 cDNA clone (Cat# RC211087) using MegaTran 2.0 (Cat# [TT210002]).