

Product datasheet for **RC211084**

TSR1 (NM_018128) Human Tagged ORF Clone

Product data:

Product Type:	Expression Plasmids
Product Name:	TSR1 (NM_018128) Human Tagged ORF Clone
Tag:	Myc-DDK
Symbol:	TSR1
Mammalian Cell Selection:	Neomycin
Vector:	pCMV6-Entry (PS100001)
E. coli Selection:	Kanamycin (25 ug/mL)



[View online »](#)

**ORF Nucleotide
Sequence:**

>RC211084 ORF sequence
 Red=Cloning site Blue=ORF Green=Tags(s)

TTTTGTAATACGACTCACTATAGGGCGGCCGGGAATTCGTCGACTGGATCCGGTACCGAGGAGATCTGCC
 GCC**CGGATCGCC**

ATGGCGGCCACCGCCCGCCGCTCAAGCAGCAGAATAAAGCTCATAAAGCGGACGGCATCGGGGTC
 GGGGATCTGCACAGCGGGACGGCAAGGGCGTCTGGCACTGAAAACCTAAGCAAGAAGGTGAGAAAAGA
 ACTCAGCAGAGTCGACAGAGGCATCGCGCCAGCCAGCTCCGAAAAGCAGAAGAAGGAGGCGTTCTGGCA
 GAGAAGAGACAGCTGGGTGGCAAGGATGGCCCTCCTCATCAGGTAAGTGGTGGCCCTGCACAGCAGAA
 TTTCCCTGCCAGAGGCCATGCAGCTGCTCAAGATAGGGACACTGGAACAGTACACTTGAATGAATTGGG
 AAACACCCAGAACTTTATGCTGCTGTGCCCGCTTGAACATCGGTGGTTTTTACCTCAGCAAGGCCA
 GGGGATCTGCACGTTGTGTAGACATGGCTAAAGTAGCTGATACCATCCTGTTCTCCTTGTCCACTAG
 AAGGCTGGGACAGCACCGGTGATTACTGTCTTCTGCTCTTTGCTCAGGGCTTCCGACATATACT
 AGCTGTCCAGGGATTTCTGGCCTCCCACTGAAGAAACAATAGATACCAGGAAGAAGCTAAGTAAAGCA
 GTGGAGAAGCGCTTCCGCATGACAAACTCCTCTTGTAGACACTCAACAGGAGGAGGGATGCTGCTTA
 GGCAGTTGGCTAACCAAGCAACAGCATCTTGCTTTTCGAGATCGGCGGCCTACCTATTTGCCATGC
 TGTGATTTTGTCTTAGTGAAGAGAATAAAGTGGTGGCACCTTAAAAATTCAGGCTATGTTTCGAGGG
 CAGACTCTGAATGTCAATAGGTTGCTGCATATCGTTGGATATGGTGAATTCAGATGAAACAGATAGATG
 CCCCCGGAGACCTTTCCCTTTAAATCCTAGAGGAATTAACCCCAAAAGGACCCAGACATGGCAATGGA
 GATTTGTGCTACGGATGCTGTAGATGATATGGAAGAAGGCTTAAAGTCTAATGAAGGCAGACCCCTGGT
 AGACAGGAATCCTTGAAGCAGAGGTTATCCAGATCCAATGGAGGGAGAGCAAACCTGGCCCACTGAGG
 AGGAGCTGAGCGAGGCAAAGGATTTCTGAAGGAAAGTTCTAAGTGGTAAAGAAGGTCCCAAGGAAC
 ATCCAGTTACCAAGCTGAATGGATTTGGATGGTGGCAGCCAAAGTGGTGGGGAAGGAGATGAATATGAA
 TATGATGATATGGAACATGAGGATTTATGGAGGAGGAATCTCAGGATGAGAGTGTGAAGAAGGGAAG
 AATATGAAACTATGACTATTGGGGAGTCTGTGCATGATGATCTGTATGATAAGAAAGTAGATGAAGAAGC
 TGAGGCAAAAATGTTGGAGAAAATAAACAAGAAAGACTGGAAGAGATGTTTCCAGATGAAGTGGACACG
 CCCCCTGATGTGGCTGCTCGAATTCGATTTAGAAAATACAGAGGCCTTAAGAGCTCCGGACATCTCCAT
 GGGATCCTAAGGAAAACCTTCTCAAGATTATGCTCGAATATTTCAAGTTTCAAGACTTTACTAACACTAG
 GAAAAGCATCTTTAAAGAGGTTGAAGAAAAGAGGTTGAAGGAGCTGAGGTTGGCTGGTATGTCACACTT
 CATGTCTCTGAAGTCCCCGTCTCAGTGGTGGAGTCTCAGGCAAGGAACACCCTTGATTGCATTTTCTT
 TACTACCTCATGAACAGAAGATGTCAGTATTGAATATGGTGGTGGAGCGTGACCCCTGGCAACACTGAACC
 TGTGAAAGCCAAGGAAGAGCTCATATTTCACTGTGGATTCAGGCGCTTCCGAGCCTCACCTTTATTTCT
 CAGCAGACTGCAGCGGACAAACATAAAATTCAGAGATTCTGACTGCTGCATGGCCCTGGTGGCGACAG
 TCTATGCGCCAATCACTTTTCTCCTGCATCTGTGCTGCTTTTCAAGCAAAAAGCAATGGAATGCACAG
 CCTCATTGCTACAGGCCATCTTATGTCAGTAGATCCAGACAGAATGGTCAATCAAGAGAGTTGTTCTGAGT
 GGTCACTCTTTAAAATTTTACTAAGATGGCAGTAGTACGTTACATGTTCTTCAACAGAGAGGATGTGC
 TGTGGTTTAAACCAAGTGGAACTGAGAACGAAGTGGGCGGAGAGGACATATCAAGGAACCTTTAGGTAC
 CCATGGCCACATGAAATGCAGCTTTGATGGGAAGCTAAAATCTCAAGACACAGTACTGATGAACCTGTAT
 AAACGAGTCTTCCCAAATGGACTTATGATCCATATGTACCAGAACCAGTACCCTGGCTGAAAAGTGAGA
 TTTCTTCAACAGTGCCTCAAGGGGCATGGAG

ACGCGTACGCGGCCGCTCGAGCAGAACTCATCTCAGAAGAGGATCTGGCAGCAAATGATATCCTGGATT
 ACAAGGATGACGACGATAAGGTTTAA

Protein Sequence: >RC211084 protein sequence
Red=Cloning site Green=Tags(s)

MAAHRPGPLKQQNKAHKGGRHRGRGSAQRDGGKRLALKTL SKKVRKELSRVDQRHRASQLRKQKKEAVLA
EKRQLGGKDGPPHQVLVPLHSRISLPEAMQLLQDRDTGTVHLNELGNTQNFMLLCPRLKHRWFFTSARP
GDLHVLDMAKVADTILFLLDPLEGWDSTGDYCL SCLFAQGLPTYTLAVQGISGLPLKKQIDTRKKLSKA
VEKRFPHDKLLLLDTQQEAGMLLRQLANQKQHLAFRRRAYLFAHAVDFVPSEENNLVGTLKISGYVRG
QTLNVNRLHLHIVGYGDFQMKQIDAPGDPFPLNPRGIKPKQKDPDMAMEICATDAVDDMEEGLKVLKADPG
RQESLQAEVIPPMEGEQTWPTEEELSEAKDFLKESSKVVKKVPGTSSYQAEWILDGGSQSGGEGDEYE
YDDMEHEDFMEESQDESSEEEEEYETMTIGESVHDDL YDKKVDEEAEAKMLEKYQERLEEMFPDEVDT
PRDVAARIRFQKYRGLKSFRTSPWDPKENLPQDYARIFQFQNFNTNRKSIKFEVEEKEVEGAEVGWYVTL
HVSEVPVSVVECFRQGTPLIAFSLLPHEQKMSVLNMVRRDPGNTEPVKAKEELIFHCGFRRFRASPLFS
QHTAADKHKLQRFLTADMALVATVYAPITFPPASVLLFKQKSNMHS LIATGHMSVDPDRMVIKRVVLS
GHPFKIFTKMAVVRYMFFNREDVLWFKPVELRTKWGRRGHIKEPLGTHGHMKCSFDGKLSQDTVLMNLY
KRVFPKWTYDPYVPEVPWLKSEISSTVPQGGME

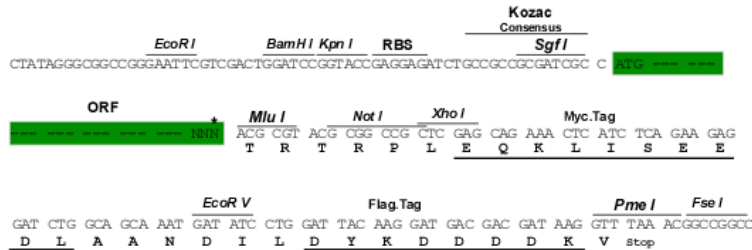
TRTRPLEQKLISEEDLAANDILDYKDDDDKV

Chromatograms: https://cdn.origene.com/chromatograms/mk6585_e02.zip

Restriction Sites: Sgfl-Mlul

Cloning Scheme:

Cloning sites used for ORF Shuttling:



* The last codon before the Stop codon of the ORF

ACCN: NM_018128

ORF Size: 2412 bp

OTI Disclaimer: The molecular sequence of this clone aligns with the gene accession number as a point of reference only. However, individual transcript sequences of the same gene can differ through naturally occurring variations (e.g. polymorphisms), each with its own valid existence. This clone is substantially in agreement with the reference, but a complete review of all prevailing variants is recommended prior to use. [More info](#)
OTI Annotation: This clone was engineered to express the complete ORF with an expression tag. Expression varies depending on the nature of the gene.

Components: The ORF clone is ion-exchange column purified and shipped in a 2D barcoded Matrix tube containing 10ug of transfection-ready, dried plasmid DNA (reconstitute with 100 ul of water).

Reconstitution Method:

1. Centrifuge at 5,000xg for 5min.
2. Carefully open the tube and add 100ul of sterile water to dissolve the DNA.
3. Close the tube and incubate for 10 minutes at room temperature.
4. Briefly vortex the tube and then do a quick spin (less than 5000xg) to concentrate the liquid at the bottom.
5. Store the suspended plasmid at -20°C. The DNA is stable for at least one year from date of shipping when stored at -20°C.

RefSeq: [NM_018128.5](#)

RefSeq Size: 4890 bp

RefSeq ORF: 2415 bp

Locus ID: 55720

UniProt ID: [Q2NL82](#)

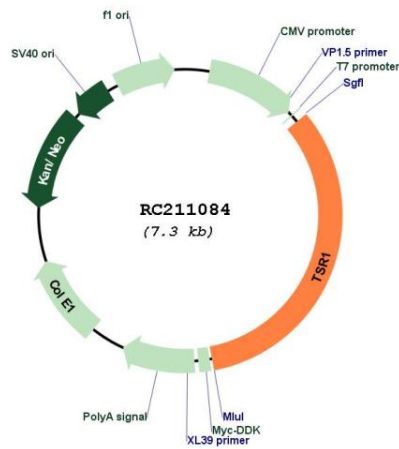
Cytogenetics: 17p13.3

Domains: DUF663

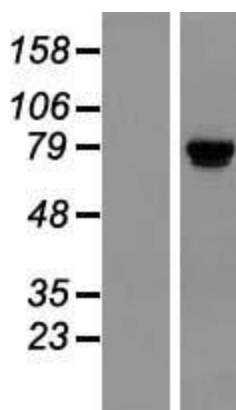
MW: 91.8 kDa

Gene Summary: Required during maturation of the 40S ribosomal subunit in the nucleolus.[UniProtKB/Swiss-Prot Function]

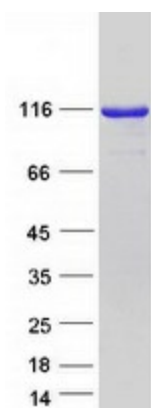
Product images:



Circular map for RC211084



Western blot validation of overexpression lysate (Cat# [LY413281]) using anti-DDK antibody (Cat# [TA50011-100]). Left: Cell lysates from un-transfected HEK293T cells; Right: Cell lysates from HEK293T cells transfected with RC211084 using transfection reagent MegaTran 2.0 (Cat# [TT210002]).



Coomassie blue staining of purified TSR1 protein (Cat# [TP311084]). The protein was produced from HEK293T cells transfected with TSR1 cDNA clone (Cat# RC211084) using MegaTran 2.0 (Cat# [TT210002]).