

Product datasheet for **RC211077**

CLSTN3 (NM_014718) Human Tagged ORF Clone

Product data:

Product Type:	Expression Plasmids
Product Name:	CLSTN3 (NM_014718) Human Tagged ORF Clone
Tag:	Myc-DDK
Symbol:	CLSTN3
Synonyms:	alcbeta; CDHR14; CSTN3
Mammalian Cell Selection:	Neomycin
Vector:	pCMV6-Entry (PS100001)
E. coli Selection:	Kanamycin (25 ug/mL)



[View online »](#)

ORF Nucleotide Sequence:

>RC211077 representing NM_014718
 Red=Cloning site Blue=ORF Green=Tags(s)

TTTTGTAATACGACTCACTATAGGGCGGCCGGAATTCGTCGACTGGATCCGGTACCGAGGAGATCTGCC
 GCC**GCGATCGCC**

ATGACCCTCTGTGCTGCCCTCTGTGCTGCGCTCTGTGCTCGCTCCTGTCTGTAACAAAGCCAACA
 AGCACAAGCCATGGATTGAGGCAGAGTACCAGGGCATCGTCATGGAGAATGACAACACGGTCTACTGAA
 TCCACCACTCTTTGCCTTGACAAAGGATGCCCCGCTGCGCTATGCAGGTGAGATCTGCGGCTTCCGGCTC
 CATGGGTCTGGGTGCCCTTTGAGGCTGTGATCCTTGACAAGGCGACAGGAGAGGGGCTGATCCGGGCCA
 AGGAGCCTGTGGACTGCGAGGCCAGAAGAACACACCTTACCATCCAGGCCTATGACTGTGGCGAGGG
 CCCCAGCGGGCCAACACCAAGAAGTCCACAAGGCCACTGTGCATGTGCGGGTCAACGATGTGAACGAG
 TTTGCCCACTGTTGTGAACGGCTGTATCGTGGCTGTGACAGAGGGGAAGCTGTACGATCGCATCC
 TGGGGTGAAGCCATTGACGGTACTGCTCCCCAGTACAGCCAGATCTGCTACTATGAGATTCTCAC
 ACCCAACACCCCTTCTCATTGACAATGACGGGAACATTGAGAACACAGAGAAGCTGCAGTACAGTGGT
 GAGAGGCTCTATAAGTTTACAGTACAGCTTATGACTGTGGGAAGAAGCGGGCAGCAGATGATGCTGAGG
 TGGAGATTGAGGTGAAGCCACCTGTAACCCAGCTGGCAAGGCTGGAACAAAAGGATCGAATATGCACC
 AGGTGCTGGGAGCTTGGCTTTGTTCCCTGGTATCCGCCTGGAGACCTGTGATGAACCACTCTGGAACATT
 CAGGCCACCATAGAGCTGCAGACCAGCCATGTGGCCAAGGGCTGTGACCGTGACAACACTCAGAGCGGG
 CGCTGCGGAACTCTGTGGTGTGCCACTGGGGAGGTGGATCTGTTGCCCATGCCGCCCCAATGCCAA
 CTGGACAGCAGGACTCTCGGTGCACTACAGCCAGGACAGCAGCCTGATCTACTGGTTCAATGGCACCCAG
 GCTGTGCAGGTGCCCTGGTGGCCCCAGTGGGCTGGGCTCTGGCCCCAGGACAGCCTCAGTGACCCT
 TCACCCCTCTCTGGATGAAGCATGGCGTAACCTCCAACAAGGGCAAGAAGGAAGGAAACCATCGT
 ATGTAACACTGTCCAGAATGAGGACGGCTTCTCTCACTACTCGCTGACTGTCCACGGCTGTAGGATTGCC
 TTCTCTACTGGCCCTGCTTGAGAGTGCCCGCCAGTCAAGTTCTCTGGAAGCTGGAGCAGGTCTGTG
 ATGATGAGTGGCACCCTACGCTCTGAACCTCGAGTTCACACAGTCACTCTATACCGACGGCATCTC
 CTTGACCCCTGCCCTCATCCATGACAATGGCTCATCCACCCACCCGAAGGGAGCCTGCTCATGATT
 GGGGCTGCTGGACTGAGGAGAAGAACAAGAGAAGGAAAAGGGAGACAACAGTACAGACACCACCAAG
 GAGACCTTTGTCGATCCACCACTACTTCCATGGCTACCTGGCTGGTTTTCAGCGTGGCTCAGGTGCGCT
 GGAGAGCCGCGAGGTATCGAGTGCCTATGCATGTGCGGAGGGGCTGGACTATAGGGATTTGAGAGC
 CTGGGCAAGGCATGAAGTCCAGTGAACCCCTCACAGTCCCTGCTCACCTGGAGGGGATGATGTGG
 AGACCTTCAACCATGCCCTGCAGCATGTGGCTTACATGAACACTCTGCGCTTTGCCACGCCCGGCTCAG
 GCCCTGCGCCTCACCACTGCTGTCAAGTGCTTACGGAAGAGTCTGCGTCTCCATCCCTGAAGTGGAG
 GGCTACGTGGTGCCTTTCAGCCTGACGCCCCAGATCCTGCTGAGTGGCACTGCTCATTTTGGCCGCC
 CAGCTGTGGACTTTGAGGGAACCAACGGCTCCCTTTGTTCCCTGATCTTCAATCACCTGCTCCATTTT
 TCACCAGGTGGAGGCCAAAAGGATGAGAGTTGGCAGGGCACAGTGACAGACACACGCATGTGCGATGAG
 ATGTGCAACAACCTGGATGGCTGTGAAATTTCTCTGGTGGGGATGACCTGGATCCCGAGCGGAAAGCC
 TGCTCTGGACACAACCTCTCTGCAGCAGCGGGGCTGGAGCTCACCAACACATCTGCCTACCTCACTAT
 TGCTGGGTGGAGAGCATCACTGTGTATGAAGAGATCCTGAGGCAGGCTCGTTATCGGCTGCACACGGA
 GCTGCCCTTACACCAGGAAGTTCCGGCTTCTGCTCGGAAATGAATGGCCGTTACTCCAGCAATGAAT
 TCATCGTGGAGGTCAATGTCTGACAGCATGAACCGGTTGCCACCCAGCCAGTGTGCTCAGCTCCCA
 GCAGTTCTGACCGTGGTACCAGCCCCGCTGAGATGGCTGGACACAGCCTAGCCAGCTCCACAGA
 AACTCCATGATACCCAGCGCCGAACCCCTCATATTGTTGGTGTGCGTGGGCTTCTGGTGTGATGGTGC
 TCTGGGCTGGTGCATCCATTCCCTTACCAGCGCTCTCAGGGCCGGCGGCTCCAGGGGCTC
 CAGTGACCCCAAGGACCCAGACCTTCTGGGATGACTCAGCTCTACCATATTGTGAACCCATGGAG
 TCCTACCAGAATCGGCAGTCTGTGTGACGGGGCTGTTGGGGCCAGCAGGAGGATGAGGACAGCAGT
 ACTCGGAGGTGGCCGATTCCCCAGCAGCGACGAGAGACGCATCATCGAGACCCCCACACCGCTAC

ACGCGTACGCGGCCGCTCGAGCAGAACTCATCTCAGAAGAGGATCTGGCAGCAAATGATATCCTGGATT
 ACAAGGATGACGACGATAAGGTTTAA

Protein Sequence: >RC211077 representing NM_014718
 Red=Cloning site Green=Tags(s)

```

MTLLLLPLLLASLLASCSCNANKHKPWIEAEYQGIWMENDNTVLLNPPLFALDKDAPLRYAGEICGFRL
HGSGVPFEAVILDKATGEGLIRAKEPVDCEAQKEHTFTIQAYDCGEGPDGANTKKSHKATVHVRVNDVNE
FAPVFVERLYRAAVTEGKLYDRILRVEAIDGDCSPOYSQICYEILTPNTPFLIDNDGNIENTEKLQYSG
ERLYKFTVTAYDCGKKRAADDAEVEIQVKPTCKPSWQGWNKRIEYAPGAGSLALFPGIRLETCTDEPLWNI
QATIELQTSHVAKGCDRDNYSERALRKLCGAATGEVDLLPMPGPANAWTAGLSVHYSQDSSLIYWFNGTQ
AVQVPLGGPSGLGSGPQDSLSDHFTLSFWMKHGVTTPNKGKKEEETIVCNTVQNEGDGFSHYSLTVHGCRIA
FLYWPLLESARPVKFLWKLEQVCDDEWHHYALNLEFPTVTLTYDGISFDPALIHNDGLIHPPRPREPALMI
GACWTEEKNEKEKGDNSTDTTQGDPLSIHHYFHGYLAGFSVRSGRLESREVEICLYACREGLDYRDFES
LGKGMKVHVNPSSQLLTLEGDDVETFNHALQHVAYMNTLRFATPGVRPLRLTTAVKCFSEESCVSPEVE
GYVVVLQPDAPQILLSGTAHFARPAVDFEGTNGVPLFPDLQITCSISHQVEAKKDESWQGTVDTRMSDE
IVHNLGCEISLVGDDLDPERESLLDTSLSLQQRGLELTNTSAYLTIAGVESITVYEEILRQARYRLRHG
AALYTRKFRLLSCSEMNGRYSSNEFIVEVNVLHSMNRVAHPSHVLSQQQLHRGHQPPPEMAGHSLASSHR
NSMIPSAATLIIIVCVGLVLMVVLGLVRIHSLHRRVSGAGGPPGASSDPKDPDLFWDDSSALTIIVNPMPE
SYQNRQSCVTGAVGGQEQEDEDSSDSEVADSPSSDERRIETPPHRY
  
```

TRTRPLEQKLISEEDLAANDILDYKDDDDKV

Chromatograms: https://cdn.origene.com/chromatograms/mk8101_a11.zip

Restriction Sites: SgfI-MluI

Cloning Scheme:

Cloning sites used for ORF Shuttling:



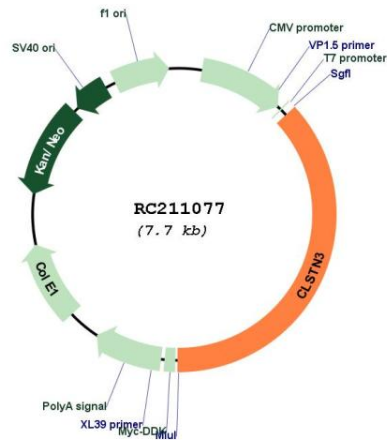
* The last codon before the Stop codon of the ORF

ACCN: NM_014718

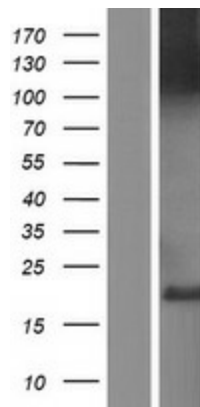
ORF Size: 2868 bp

OTI Disclaimer:	<p>Due to the inherent nature of this plasmid, standard methods to replicate additional amounts of DNA in E. coli are highly likely to result in mutations and/or rearrangements. Therefore, OriGene does not guarantee the capability to replicate this plasmid DNA. Additional amounts of DNA can be purchased from OriGene with batch-specific, full-sequence verification at a reduced cost. Please contact our customer care team at custsupport@origene.com or by calling 301.340.3188 option 3 for pricing and delivery.</p> <p>The molecular sequence of this clone aligns with the gene accession number as a point of reference only. However, individual transcript sequences of the same gene can differ through naturally occurring variations (e.g. polymorphisms), each with its own valid existence. This clone is substantially in agreement with the reference, but a complete review of all prevailing variants is recommended prior to use. More info</p>
OTI Annotation:	<p>This clone was engineered to express the complete ORF with an expression tag. Expression varies depending on the nature of the gene.</p>
Components:	<p>The ORF clone is ion-exchange column purified and shipped in a 2D barcoded Matrix tube containing 10ug of transfection-ready, dried plasmid DNA (reconstitute with 100 ul of water).</p>
Reconstitution Method:	<ol style="list-style-type: none">1. Centrifuge at 5,000xg for 5min.2. Carefully open the tube and add 100ul of sterile water to dissolve the DNA.3. Close the tube and incubate for 10 minutes at room temperature.4. Briefly vortex the tube and then do a quick spin (less than 5000xg) to concentrate the liquid at the bottom.5. Store the suspended plasmid at -20°C. The DNA is stable for at least one year from date of shipping when stored at -20°C.
RefSeq:	NM_014718.4
RefSeq Size:	4029 bp
RefSeq ORF:	2871 bp
Locus ID:	9746
UniProt ID:	Q9BQT9
Cytogenetics:	12p13.31
Domains:	CA
Protein Families:	Transmembrane
MW:	106.1 kDa
Gene Summary:	<p>May modulate calcium-mediated postsynaptic signals. Complex formation with APBA2 and APP, stabilizes APP metabolism and enhances APBA2-mediated suppression of beta-APP40 secretion, due to the retardation of intracellular APP maturation.[UniProtKB/Swiss-Prot Function]</p>

Product images:



Circular map for RC211077



Western blot validation of overexpression lysate (Cat# [LY415092]) using anti-DDK antibody (Cat# [TA50011-100]). Left: Cell lysates from untransfected HEK293T cells; Right: Cell lysates from HEK293T cells transfected with RC211077 using transfection reagent MegaTran 2.0 (Cat# [TT210002]).