

Product datasheet for **RC211071**

TUSC1 (NM_001004125) Human Tagged ORF Clone

Product data:

Product Type:	Expression Plasmids
Product Name:	TUSC1 (NM_001004125) Human Tagged ORF Clone
Tag:	Myc-DDK
Symbol:	TUSC1
Synonyms:	CCDC89B; TSG-9; TSG9
Mammalian Cell Selection:	Neomycin
Vector:	pCMV6-Entry (PS100001)
E. coli Selection:	Kanamycin (25 ug/mL)
ORF Nucleotide Sequence:	>RC211071 ORF sequence Red=Cloning site Blue=ORF Green=Tags(s)

TTTTGTAATACGACTCACTATAGGGCGGCCGGAATTCGTCGACTGGATCCGGTACCGAGGAGATCTGCC
GCC**CGATCGC**

ATGGGACCGATGTGGCGCATGCGTGGTGGCGCCACTAGGCGCGGGAGTTGCTGCGGCGGGGACGGTGCTG
CGGACGGCCGAGGGCCAGGCCGCTCCGGCCGGGCTCGTGGTGGGGGAGCCCCAGCGGCGGCGGGCGG
CGTGGGCTGGCGAGGCCGCGCGGACGGCGCCGACAGCAGCTGGAGGAGCGGTTTGCCGACCTGGCGGCG
AGCCACTTGGAGGCCATCCGTGCGCGGGACGAGTGGGACCGGCAGAACGCGCGGCTGCGTCAGGAGAACG
CCCGGCTGCGGCTCGAGAACCGCGGCTGAAGCGCGAGAACCGCAGCCTCTCCGTCAGGCTTTGCGGCT
CCCCGGCGAAGGCGGCGACGGGACGCCCGCGGAGGCACGCCGGTCCCTGAAGAGGCCAGCACGAACCGG
AGGGCTAGAGACAGCGGCCGAGAGGACGAGCCGGGACGCCAGGGCCCTGAGGGCCGACTTGAGAAGC
TGGAAGCCATGTACCGCCGGGCCCTGCTGCAGCTGCACCTCGAGCAGCGGGGACCACGTCCGAGCGGGGA
CAAGGAGGAGCAGCCTCTACAGGAACCGACTCCGGCCTCCGCTCCCGGACTCGGAGCCCTCTGGGCC
TGGCTG

ACGCGTACGCGGCCGCTCGAGCAGAACTCATCTCAGAAGAGGATCTGGCAGCAAATGATATCCTGGATT
ACAAGGATGACGACGATAAGGTTTAA



[View online »](#)

Protein Sequence: >RC211071 protein sequence
 Red=Cloning site Green=Tags(s)

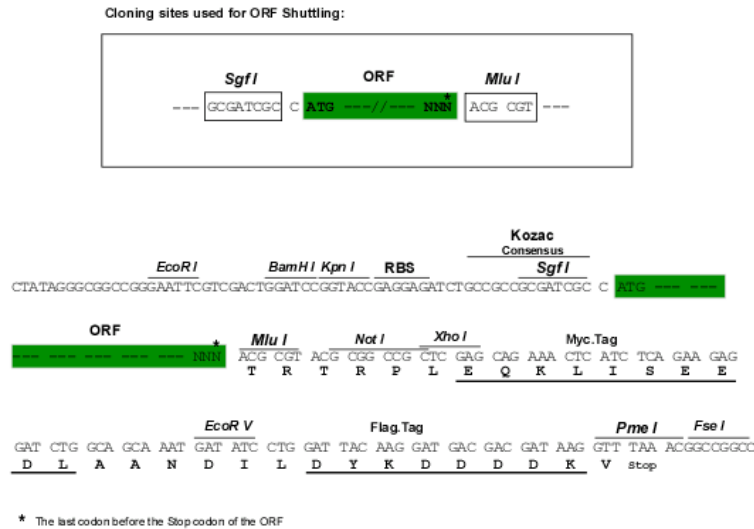
MGPMWRMRGGATRRGSCCGDGAADGRGPGRSGRARGGGSPSGGGGVGWRGRADGARQQLEERFADLAA
 SHLEAIRARDEWDRQNARLRQENARLRLENRRLKRENRLFRQALRLPGEAGDGTAEARRVPPEASTNR
 RARDSGREDEPGSPRALRARLEKLEAMYRRALLQLHLEQRGPRPSGDKEEQPLQEPDGLSRDSEPSGP
 WL

TRTRPLEQKLISEEDLAANDILDYKDDDDKV

Chromatograms: https://cdn.origene.com/chromatograms/mk6814_e12.zip

Restriction Sites: SgfI-MluI

Cloning Scheme:



ACCN: NM_001004125

ORF Size: 636 bp

OTI Disclaimer: The molecular sequence of this clone aligns with the gene accession number as a point of reference only. However, individual transcript sequences of the same gene can differ through naturally occurring variations (e.g. polymorphisms), each with its own valid existence. This clone is substantially in agreement with the reference, but a complete review of all prevailing variants is recommended prior to use. [More info](#)

OTI Annotation: This clone was engineered to express the complete ORF with an expression tag. Expression varies depending on the nature of the gene.

Components: The ORF clone is ion-exchange column purified and shipped in a 2D barcoded Matrix tube containing 10ug of transfection-ready, dried plasmid DNA (reconstitute with 100 ul of water).

Reconstitution Method:

1. Centrifuge at 5,000xg for 5min.
2. Carefully open the tube and add 100ul of sterile water to dissolve the DNA.
3. Close the tube and incubate for 10 minutes at room temperature.
4. Briefly vortex the tube and then do a quick spin (less than 5000xg) to concentrate the liquid at the bottom.
5. Store the suspended plasmid at -20°C. The DNA is stable for at least one year from date of shipping when stored at -20°C.

RefSeq: [NM_001004125.3](#)

RefSeq Size: 2477 bp

RefSeq ORF: 630 bp

Locus ID: 286319

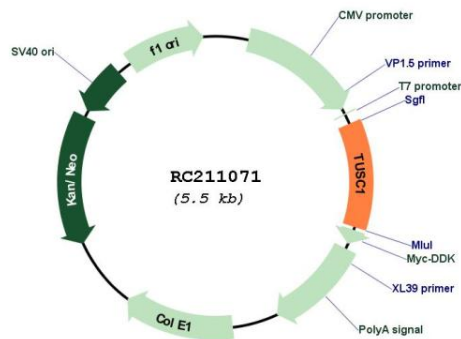
UniProt ID: [Q2TAM9](#)

Cytogenetics: 9p21.2

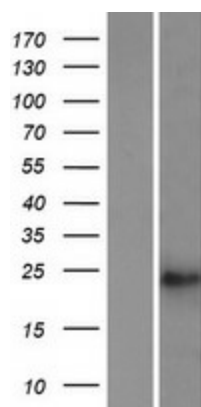
MW: 23.4 kDa

Gene Summary: This gene is located within the region of chromosome 9p that harbors tumor suppressor genes critical in carcinogenesis. It is an intronless gene which is downregulated in non-small-cell lung cancer and small-cell lung cancer cell lines, suggesting that it may play a role in lung tumorigenesis. [provided by RefSeq, Jul 2008]

Product images:



Circular map for RC211071



Western blot validation of overexpression lysate (Cat# [LY424066]) using anti-DDK antibody (Cat# [TA50011-100]). Left: Cell lysates from untransfected HEK293T cells; Right: Cell lysates from HEK293T cells transfected with RC211071 using transfection reagent MegaTran 2.0 (Cat# [TT210002]).