

## Product datasheet for **RC211070**

### **TMEM195 (AGMO) (NM\_001004320) Human Tagged ORF Clone**

#### **Product data:**

Product Type:	Expression Plasmids
Product Name:	TMEM195 (AGMO) (NM_001004320) Human Tagged ORF Clone
Tag:	Myc-DDK
Symbol:	TMEM195
Synonyms:	TMEM195
Mammalian Cell Selection:	Neomycin
Vector:	pCMV6-Entry (PS100001)
E. coli Selection:	Kanamycin (25 ug/mL)



[View online »](#)

**ORF Nucleotide Sequence:**

>RC211070 ORF sequence  
 Red=Cloning site Blue=ORF Green=Tags(s)

TTTTGTAATACGACTCACTATAGGGCGGCCGGGAATTCGTCGACTGGATCCGGTACCGAGGAGATCTGCC  
 GCC**CGCATCGCC**

ATGAAGAACCAGAAGCCAGCAGGATGTTTCAGTTTCCAGGGATTTCCGATGTTGTTTTACACGATGA  
 AACCCAGTGAAACTTCATTCCAAACATTAGAAGAGGTGCCTGATTATGTAAAAAGGCAACTCCATTTTT  
 CATTTCCTTGATGCTGCTTGAACCTGTTGTCTGAGCTGGATTCTCAAAGGAAAGCCACCAGGTCGCCTGGAT  
 GATGCTTTAACGTCATCTCAGCTGGTGTCTGTCTCGACTTCCAAGTCTATTTTTCAGGAGCATTGAAC  
 TGACCAGTTATATTTATCTGGGAGAAGTACAGGCTGTTCAATTTGCCTGGGATTCTCCATGGACTTG  
 GTATTCAGCCTTCTTAGGAGTTGACTTTGGCTACTACTGGTTCATCGTATGGCTCATGAAGTAAATATT  
 ATGTGGGCCGGACACAAACACATCATAGTTCTGAAGACTATAACTTATCCACAGCACTGAGACAGTCTG  
 TCCTCCAGATATACTTCTGGATTTCTACTCTCCCCTGGCCCTTTCATACCCCTTCAGTATATGC  
 TGTTTCATCTTCAATTCATCTTCTTTACCAATTTTGGATCCATACAGAGGTCATCAATAACCTTGGTCT  
 TTGGAAGTGAATCTTAATACTCCTAGCCATCATAGGGTTCATCATGGCAGAAATCGTTATTGCATAGACA  
 AAAATTATGCTGGTGTCTTATTATTTGGGATAAAATTTTGGGACATTTGAAGCAGAAAATGAAAAAGT  
 TGTATATGGCTTAACACATCCCATTAATACATTTGAACCAATCAAAGTGCAGTTCATCACTTATTTTCC  
 ATATGGACTACATTCTGGGCCACACCTGGATTCTTCAATAAGTTTTCTGTATATTAAGGGACCGGGAT  
 GGGGTCCAGGTAACCAAGACTTGGTCTCAGTGAAGAAATTCAGAGGTCACCGGCAAAGAAGTTCCTT  
 CTCATCATCTTTCAGCTATTAAGATATATACAGTTGTACAGTTGCTCTGATGTTGGCATTATAT  
 GAAGAGACCTTTGAGATACAGCTGCACTGTGCAAGTACTCTCTTCTGAGGGTTTGCCTCATTATCC  
 TGACCTTGACTTCCATTGGATTTCTTCTGGATCAAAGCAAGCAAGCAGCTATTATGAAAAGTCTCCGTTG  
 CTTGATGTTCTTAATGCTGTACCGATTTGGTCACTGAAGCCTCTGTCCCTTATTGTCATCTGCTTTT  
 GAGATTGTTTTTCCATTGCTTCTGGGAGTTAGAAGCATGAAACAAGTACCTCTCACCTT  
 GGAAA

**ACGCGT**ACGCGGCCGCTCGAGCAGAAACTCATCTCAGAAGAGGATCTGGCAGCAAATGATATCCTGGATT  
 ACAAGGATGACGACGATAAGGTTTAA

**Protein Sequence:**

>RC211070 protein sequence  
 Red=Cloning site Green=Tags(s)

MKNPEAQQDVSVSQGFRLFYTMKPSETSFQTLLEVPDYVKKATPFFISLMLELVVSWILKGKPPGRLD  
 DALTSISAGVLSRLPSLFFRSIELTSYIYIWENYRLFNLPWDSPWTWYSAFLGVDFGYWFHMAHEVNI  
 MWAGHQTHHSSSEDYNLSTALRQSVLQIYTSWIFYSPLALFIPPSVYAVHLQFNLLYQFWIHTEVINLGP  
 LELILNTPSHHRVHHGRNRYCIDKNYAGVLIWDKIFGTFEAENEKVYGLTHPINTFEPKQVQFHHLFS  
 IWTTFWATPGFFNKFVIFKGPWGPGRGLGLSEEIPEVTGKEVPFSSSSQLLKIYTVVQFALMLAFY  
 EETFADTAALSQVTLRLRVCFIILTLTSIGFLLDQRPKAAIMETLRCLMFLMLYRFGHLKPLVPSLSSAF  
 EIVFSICIAFWGVRSMKQLTSHPWK

**TR**TRPLEQKLISEEDLAANDILDYKDDDDKV

**Chromatograms:**

[https://cdn.origene.com/chromatograms/mk6378\\_c12.zip](https://cdn.origene.com/chromatograms/mk6378_c12.zip)

**Restriction Sites:**

Sgfl-Mlul

**Cloning Scheme:**

**ACCN:**

NM\_001004320

**ORF Size:**

1335 bp

**OTI Disclaimer:**

Due to the inherent nature of this plasmid, standard methods to replicate additional amounts of DNA in E. coli are highly likely to result in mutations and/or rearrangements. Therefore, OriGene does not guarantee the capability to replicate this plasmid DNA. Additional amounts of DNA can be purchased from OriGene with batch-specific, full-sequence verification at a reduced cost. Please contact our customer care team at [custsupport@origene.com](mailto:custsupport@origene.com) or by calling 301.340.3188 option 3 for pricing and delivery.

The molecular sequence of this clone aligns with the gene accession number as a point of reference only. However, individual transcript sequences of the same gene can differ through naturally occurring variations (e.g. polymorphisms), each with its own valid existence. This clone is substantially in agreement with the reference, but a complete review of all prevailing variants is recommended prior to use. [More info](#)

**OTI Annotation:**

This clone was engineered to express the complete ORF with an expression tag. Expression varies depending on the nature of the gene.

**Components:**

The ORF clone is ion-exchange column purified and shipped in a 2D barcoded Matrix tube containing 10ug of transfection-ready, dried plasmid DNA (reconstitute with 100 ul of water).

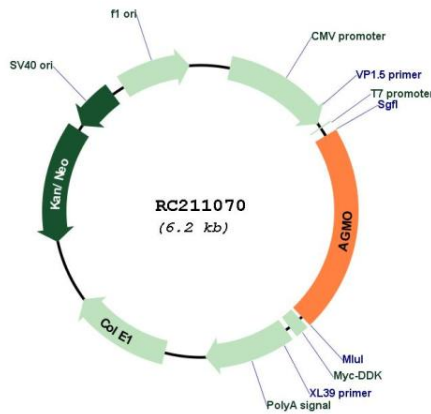
**Reconstitution Method:**

1. Centrifuge at 5,000xg for 5min.
2. Carefully open the tube and add 100ul of sterile water to dissolve the DNA.
3. Close the tube and incubate for 10 minutes at room temperature.
4. Briefly vortex the tube and then do a quick spin (less than 5000xg) to concentrate the liquid at the bottom.
5. Store the suspended plasmid at -20°C. The DNA is stable for at least one year from date of shipping when stored at -20°C.

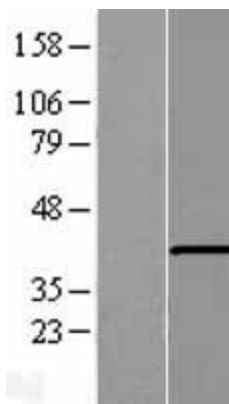
**RefSeq:** [NM\\_001004320.2](#)  
**RefSeq Size:** 2475 bp  
**RefSeq ORF:** 1338 bp  
**Locus ID:** 392636  
**UniProt ID:** [Q6ZNB7](#)  
**Cytogenetics:** 7p21.2  
**Protein Families:** Transmembrane  
**MW:** 51.5 kDa

**Gene Summary:** The protein encoded by this gene is a tetrahydrobiopterin- and iron-dependent enzyme that cleaves the ether bond of alkylglycerols. Sequence comparisons distinguish this protein as forming a third, distinct class of tetrahydrobiopterin-dependent enzymes. Variations in this gene have been associated with decreased glucose-stimulated insulin response, type 2 diabetes, and susceptibility to intracranial aneurysms. [provided by RefSeq, Aug 2012]

### Product images:



Circular map for RC211070



Western blot validation of overexpression lysate (Cat# [LY423724]) using anti-DDK antibody (Cat# [TA50011-100]). Left: Cell lysates from untransfected HEK293T cells; Right: Cell lysates from HEK293T cells transfected with RC211070 using transfection reagent MegaTran 2.0 (Cat# [TT210002]).