

## Product datasheet for **RC211066**

### **EPLIN (LIMA1) (NM\_016357) Human Tagged ORF Clone**

#### **Product data:**

Product Type:	Expression Plasmids
Product Name:	EPLIN (LIMA1) (NM_016357) Human Tagged ORF Clone
Tag:	Myc-DDK
Symbol:	EPLIN
Synonyms:	EPLIN; LDLCQ8; SREBP3
Mammalian Cell Selection:	Neomycin
Vector:	pCMV6-Entry (PS100001)
E. coli Selection:	Kanamycin (25 ug/mL)



[View online »](#)

ORF Nucleotide  
Sequence:

>RC211066 representing NM\_016357  
Red=Cloning site Blue=ORF Green=Tags(s)

TTTTGTAATACGACTCACTATAGGGCGGCCGGAATTCGTCGACTGGATCCGGTACCGAGGAGATCTGCC  
GCC**CGCATCGCC**

ATGGAATCATCTCCATTTAATAGACGGCAATGGACCTCACTATCATTGAGGGTAACAGCCAAAGAACTTT  
CTCTTGTCACAAAGAACAAGTCATCGGCTATTGTGGAAATATTCTCCAAGTACCAGAAAGCAGCTGAAGA  
AACAAACATGGAGAAGAAGAGAAGTAACACCGAAAATCTCTCCAGCACTTTAGAAAGGGGACCCTGACT  
GTGTTAAAGAAGAAGTGGGAGAACCAGGGCTGGGAGCAGAGTCTCACACAGACTCTCTACGGAACAGCA  
GCACTGAGATTAGGCACAGAGCAGACCATCCTCCTGCTGAAGTGACAAGCCACGCTGCTTCTGGAGCCAA  
AGCTGACCAAGAAGAACAATCCACCCAGATCTAGACTCAGGTCACCTCCTGAAGCCCTCGTTCAGGGT  
CGATATCCCACATCAAGGACGGTGAAGTCTTAAAGACCACTCAACAGAAAAGTAAAAAATGGAAAATT  
GTCTAGGAGAATCCAGGCATGAAGTAGAAAAATCAGAAATCAGTGA AACACAGATGCTTCGGGCAAAAT  
AGAGAAAATAATGTTCCGCTGAACAGGCTTAAGATGATGTTTGAGAAAGGTGAACCAACTCAAATAAG  
ATTCTCCGGGCCAAAGCCGAAGTGCAAGTGGAAGGAAGATCTCTGAAAACAGCTATTCTCTAGATGACC  
TGGAAATAGGCCAGGTCAGTTGTCATCTTCTACATTTGACTCGGAGAAAAATGAGAGTAGACGAAATCT  
GAACTTCCACGCCTCTCAGAAACCTCTATAAAGGATCGAATGGCCAAGTACCAGGCAGCTGTGTCCAAA  
CAAAGCAGCTCAACCAACTATACAAATGAGCTGAAAGCCAGTGGTGGCGAAATCAAAATTCATAAAATGG  
AGCAAAAGGAGAAATGTGCCCCAGGTCCTGAGGTCTGCATCACCCATCAGGAAGGGGAAAAGATTCTGC  
AAATGAGAATAGCCTGGCAGTCCGTTCCACCCCTGCCGAAGTACTCCCGTACTCCAGGTTAAGAGT  
GAGGTTCAACAGCCTGTCCATCCAAGCCACTAAGTCCAGATTCAGAGCCTCCAGTCTTCTGAAAGTT  
TCCTCCCAAAGCAATGAAGAAGTTTCAGGCACCTGCAAGAGAGACCTGCGTGGAATGTCAGAAGCAGT  
CTATCCAATGGAGCGTCTCTGGCCAACCAAGCAGGTGTTTCACATCAGCTGCTTCCGTTGCTCCTATTGC  
AACAAACAACTCAGTCTAGGAACATATGCATCTTTACATGGAAGAATCTATTGTAAGCCTCACTTCAATC  
AACTCTTTAAATCTAAGGGCACTATGATGAAGGCTTTGGGCACAGACCACACAAGGATCTATGGGCAAG  
CAAAAATGAAAACGAAGAGATTTTGGAGAGACCAGCCAGCTTGCAAAATGCAAGGGAGACCCCTCACAGC  
CCAGGGGTAGAAGATGCCCTATTGCTAAGGTGGGTGCCTGGCTGCAAGTATGGAAGCCAAGGCCTCCT  
CTCAGCAGGAGAAGGAAGACAAGCCAGCTGAAACCAAGAAGCTGAGGATCGCCTGGCCACCCCCACTGA  
ACTTGAAGTTCAGGAAGTGCCTTGGAGGAAGGGATCAAAATGTCAAAGCCCAAATGGCCTCCTGAAGAC  
GAAATCAGCAAGCCGAAGTTCCTGAGGATGTCGATCTAGATCTGAAGAAGCTAAGACGATCTTCTTCAC  
TGAAGGAAAGAAGCCGCCATTCACTGTAGCAGCTTCATTTCAAAGCACCTCTGTCAAGAGCCCAAAAC  
TGTGTCCCACTATCAGGAAAGGCTGGAGCATGTCAGAGCAGAGTGAAGAGTCTGTGGGTGGAAGAGTT  
GCAGAAAGGAAACAAGTGGAAAATGCCAAGGCTTCTAAGAAGAATGGAAATGTGGGAAAAACAACCTGGC  
AAAACAAGAATCTAAGGAGAGACAGGGAAGAGAAGTAAAGGAAGGTCATAGTTTGGAGATGGAGAATGA  
GAATCTTGTAGAAAATGGTGCAGACTCCGATGAAGATGATAACAGCTTCTCAAACAACAATCTCCACAA  
GAACCAAGTCTCTGAATTGGTCGAGTTTTGTAGACAACACCTTTGCTGAAGAATCACTACTCAGAATC  
AGAAATCCCAGGATGTGGAACCTGGGAGGGAGAAGTGGTCAAAGAGCTCTCTGTGGAAGAACAGATAAA  
GAGAAATCGGTATTATGATGAGGATGAGGATGAAGAG

**ACGCGT**ACGCGGCCGCTCGAGCAGAAACTCATCTCAGAAGAGGATCTGGCAGCAATGATATCCTGGATT  
ACAAGGATGACGACGATAAGGTTTAA

**Protein Sequence:** >RC211066 representing NM\_016357

Red=Cloning site Green=Tags(s)

```

MESSPFNRRQWTSLSLRVTAKEKSLVKNKSSAIVEIFSKYQKAAEETNMEKKRSNTENLSQHFRKGLT
VLKKKWPNGPLGAESHTDSL RNSSTEIRHRADHPPAEVTSHAASGAKADQEEQIHPPRSRLRSPPEALVQG
RYPHIKDGEDLKDHOSTESKKMENCLGESRHEVEKSEISENTDASGKIEKYNVPLNRLKMMFEKGEPTQTK
ILRAQSRASGRKISENSYSLDDLEIGPGQLSSSTFDSEKNESTRNLELPRLSETS IKDRMAKYQAAVSK
QSSSTNYTNELKASGGEIKIHKMEQKENVPPGPEVCITHQEGEKISANENSLAVRSTPAEDDSRDSQVKS
EVQQPVHPKPLSPDRASSLSESPPKAMKFKQAPARETCVECQKTVYPMERLLANQQVFHISCFRCSYC
NNKLSLGTYASLHGRIYCKPHFNQLFKSKGNYDEGFGHRPHKDLWASKNENEILERPQLANARETPHS
PGVEDAPIAKVGVLAASMEAKASSQKEDKPAETKKLRIAWPPPTELGSSSGSALEEGIKMSKPKWPPED
EISKPEVPEDVDLDLKKLRRSSSLKERSRPFVAASFQSTSVKSPKTVSPPIRKQWSMSEQSEESVGGRRV
AERKQVENAKASKKNGVGTKTTWQNKESKGETGKRSKEGHSLEMENENLVENGADSDDDNSFLKQQSPQ
EPKSLNWSFVDNTFAEEFTTQNQKSQDVELWEGEVVKELSVEEQIKRNRYYDEDEDEE
  
```

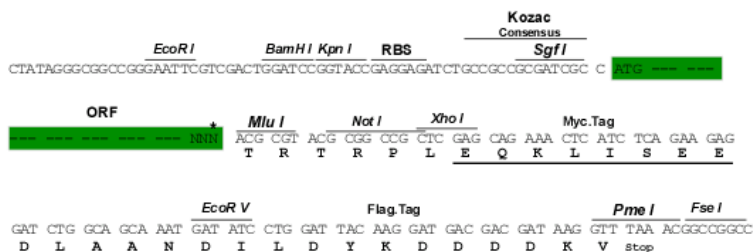
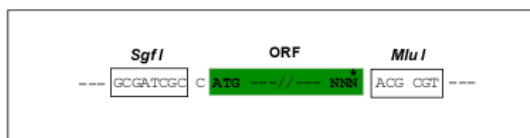
TRTRPLEQKLISEEDLAANDILDYKDDDDKV

**Chromatograms:** [https://cdn.origene.com/chromatograms/mg2565\\_f11.zip](https://cdn.origene.com/chromatograms/mg2565_f11.zip)

**Restriction Sites:** SgfI-MluI

**Cloning Scheme:**

Cloning sites used for ORF Shuttling:



\* The last codon before the Stop codon of the ORF

**ACCN:** NM\_016357

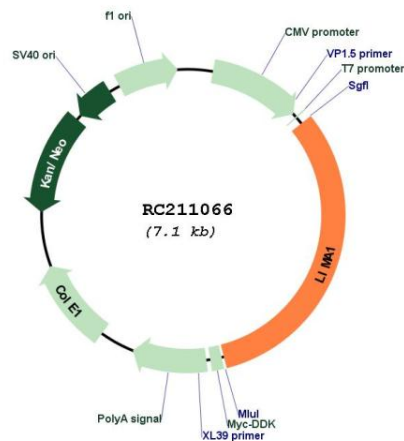
**ORF Size:** 2277 bp

**OTI Disclaimer:** The molecular sequence of this clone aligns with the gene accession number as a point of reference only. However, individual transcript sequences of the same gene can differ through naturally occurring variations (e.g. polymorphisms), each with its own valid existence. This clone is substantially in agreement with the reference, but a complete review of all prevailing variants is recommended prior to use. [More info](#)

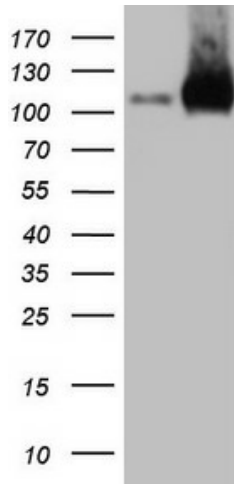
**OTI Annotation:** This clone was engineered to express the complete ORF with an expression tag. Expression varies depending on the nature of the gene.

<b>Components:</b>	The ORF clone is ion-exchange column purified and shipped in a 2D barcoded Matrix tube containing 10ug of transfection-ready, dried plasmid DNA (reconstitute with 100 ul of water).
<b>Reconstitution Method:</b>	<ol style="list-style-type: none"> <li>1. Centrifuge at 5,000xg for 5min.</li> <li>2. Carefully open the tube and add 100ul of sterile water to dissolve the DNA.</li> <li>3. Close the tube and incubate for 10 minutes at room temperature.</li> <li>4. Briefly vortex the tube and then do a quick spin (less than 5000xg) to concentrate the liquid at the bottom.</li> <li>5. Store the suspended plasmid at -20°C. The DNA is stable for at least one year from date of shipping when stored at -20°C.</li> </ol>
<b>RefSeq:</b>	<u><a href="#">NM_016357.5</a></u>
<b>RefSeq Size:</b>	3664 bp
<b>RefSeq ORF:</b>	2280 bp
<b>Locus ID:</b>	51474
<b>UniProt ID:</b>	<u><a href="#">Q9UHB6</a></u>
<b>Cytogenetics:</b>	12q13.12
<b>Domains:</b>	LIM
<b>MW:</b>	85 kDa
<b>Gene Summary:</b>	This gene encodes a cytoskeleton-associated protein that inhibits actin filament depolymerization and cross-links filaments in bundles. It is downregulated in some cancer cell lines. Alternatively spliced transcript variants encoding different isoforms have been described for this gene, and expression of some of the variants maybe independently regulated. [provided by RefSeq, Aug 2011]

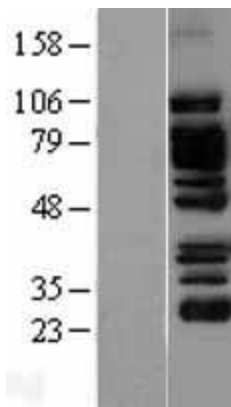
### Product images:



Circular map for RC211066



HEK293T cells were transfected with the pCMV6-ENTRY control (Cat# [PS100001], Left lane) or pCMV6-ENTRY LIMA1 (Cat# RC211066, Right lane) cDNA for 48 hrs and lysed. Equivalent amounts of cell lysates (5 ug per lane) were separated by SDS-PAGE and immunoblotted with anti-LIMA1 (Cat# [TA808537])(1:2000). Positive lysates [LY402544] (100ug) and [LC402544] (20ug) can be purchased separately from OriGene.



Western blot validation of overexpression lysate (Cat# [LY426434]) using anti-DDK antibody (Cat# [TA50011-100]). Left: Cell lysates from untransfected HEK293T cells; Right: Cell lysates from HEK293T cells transfected with [RC226148] using transfection reagent MegaTran 2.0 (Cat# [TT210002]).