

Product datasheet for **RC211065**

KLHDC5 (KLHL42) (NM_020782) Human Tagged ORF Clone

Product data:

Product Type:	Expression Plasmids
Product Name:	KLHDC5 (KLHL42) (NM_020782) Human Tagged ORF Clone
Tag:	Myc-DDK
Symbol:	KLHDC5
Synonyms:	Ctb9; KLHDC5
Mammalian Cell Selection:	Neomycin
Vector:	pCMV6-Entry (PS100001)
E. coli Selection:	Kanamycin (25 ug/mL)



[View online »](#)

ORF Nucleotide Sequence:

>RC211065 ORF sequence
 Red=Cloning site Blue=ORF Green=Tags(s)

TTTTGTAATACGACTCACTATAGGGCGGCCGGAATTCGTCGACTGGATCCGGTACCGAGGAGATCTGCC
 GCC**CGGATCGCC**

ATGTCGGCCGAGGAGATGGTGCAGATCCGCTGGAGACCCTGCTACCCGGTGAGCAAGAGGAAGCTCA
 TCGAGCAGAGCGACTACTTCCGCGCCCTTACCGCTCCGGCATGCGCGAGGCCCTGAGCCAGGAGCCGG
 CGGCCCGGAGGTGCAGCAGCTGCGCGCCCTCAGCGCGCCGGGCTGCGGGTGGTACTGGACTTCATCAAC
 GCCGGCGGGGCCCGGAAGGCTGGCTCCTGGGCCGCGGGGAAAAGGGCGGGGGTGGACGAGGACG
 AGGAGATGGATGAGGTGAGCCTGCTGTCCGAGCTGGTGGAGGCGGCCTCCTTCTGCAGGTACGTCCT
 GCTGCAGTGTCTGTCCAGGTGCGGCTCAATAACTGCCTGGAGATGTACCGCTGGCGCAGGTGTAC
 GGGCTGCCGACCTGCAGGAGCCTGCCTGCGCTTTCATGGTCTCCACTCCACGAGGTGCTGTCAAGC
 CCCAGTCCACCTCCTGGGTCTCCTCCCAAGCTCCAGGGATGTCAGCCTGAAGCAGAGGCTGAGGGA
 GGCCCGGATGACTGGGACTCCTGCTCCTGTCGTCGGCCCTCGGGGACTCCTGGGGGACCCCTGGCCCTCAC
 CCTACAGGGGGAGCCCCGTCCATGCTCAGGTACGAGGAGATGACTGAGCGTTGGTCCCGCTGGCCA
 ACAACCTTCTCCGACCTGGTCAATGTAGGGGCTATGGGTCTGCCATCCTGGACAACCTCTTTCAT
 AGTGGGCGGTACAGGATCACTAGCCAGGAGATCTCCGCTGCGCATTCTACAACCCAGACCAACGAG
 TGGCTCCAGGTGGCTCCATGAACCAGAAGAGGTCTAACTTCAAACCTTGTGGCTGTTAATTCAAAACCT
 ATGCCATCGGAGGGCAGGCCGTTTCTAACGTTGAGTGTTACAACCCGAGCAGGATGCGTGGAAATTTGT
 GGGCCCTTACCAATCCTCTGGCTGAGTCTCTGCTGTGAGTGAAGGAAAAATTTATGTCATTGGA
 GGATACTACCAGAGACCGAACATGAACATTTTGCAGTACTGCCCTCTTCCGACATGTGGACGCTCT
 TTGAAACATGTGACGTCCACATTCGCAAGCAGCAGATGGTGTCTGTGGAAGAGACCATCTACATCGTGGG
 GGGGTGTCTCCACGAGCTGGGGCCCAACCGCAGGAGCAGCCAGAGCGAGGACATGCTCACCGTGCAGTCC
 TACAACACCGTCAACCGCAGTGCTCTACCTCAAGGAGAACACGTCCAAATCGGGTCTTAACTTGACTT
 GTGCGCTCCATAACGACGGCATCTACATCATGAGCAGAGACGTCACCCTGTGACACGCTTGAACACCG
 AGTGTTCCTCAAGTACAACATCTTTTCAGATAGTTGGGAAGCATTTTCGGCGTTTTCCAGCTTTTGGACAT
 AACTTGTGGTTTCTTCTTTATCTGCCCAATAAAGCAGAAACA

ACGCGTACGCGGCCGCTCGAGCAGAAACTCATCTCAGAAGAGGATCTGGCAGCAAATGATATCCTGGATT
 ACAAGGATGACGACGATAAGGTTTAA

Protein Sequence:

>RC211065 protein sequence
 Red=Cloning site Green=Tags(s)

MSAEEMVQIRLEDRCYPVSKRKLIEQSDYFRALYRSGMREALSQEAGGPEVQQLRGLSAPGLRLVLDIFIN
 AGGAREGWLLGPRGEKGGVDEDEEMDEVSLSELVEAASFLQVTSLLQLLLSQVRLNNCLEMYRLAQVY
 GLPDLQEACLRFMVVHFHEVLCKPQFHLLGSPQAPGDVSLKQRLREARMTGTPVLVALGDFLGGPLAPH
 PYQGEPPSMLRYEEMTERWFPLANNLPPDLVNVRGYGSAILDNYLFI VGGYRITSQEISAHNSYNPSTNE
 WLQVASMNQKRSNFKLVAVNSKLYAIGGQAVSNVECYNPEQDAWNFVAPLPNPLAEFSACECKGIYVIG
 GYTTRDRNMNILQYCPSSDMWTLFETCDVHIRKQMVSVETIYIVGGCLHELGPNNRSSQSEDMLTVQS
 YNTVTRQWL YLKENTSKSGLNLTCALHNDGIYIMSRDVTLSLEHRVFLKYNIFSDSWEAFRRFPAGFH
 NLLVSSLYLPNKAET

TRTRPLEQKLISEEDLAANDILDYKDDDDKV

Chromatograms:

https://cdn.origene.com/chromatograms/mk6585_b11.zip

Restriction Sites:

Sgfl-Mlul

Cloning Scheme:


ACCN: NM_020782

ORF Size: 1515 bp

OTI Disclaimer: The molecular sequence of this clone aligns with the gene accession number as a point of reference only. However, individual transcript sequences of the same gene can differ through naturally occurring variations (e.g. polymorphisms), each with its own valid existence. This clone is substantially in agreement with the reference, but a complete review of all prevailing variants is recommended prior to use. [More info](#)

OTI Annotation: This clone was engineered to express the complete ORF with an expression tag. Expression varies depending on the nature of the gene.

Components: The ORF clone is ion-exchange column purified and shipped in a 2D barcoded Matrix tube containing 10ug of transfection-ready, dried plasmid DNA (reconstitute with 100 ul of water).

Reconstitution Method:

1. Centrifuge at 5,000xg for 5min.
2. Carefully open the tube and add 100ul of sterile water to dissolve the DNA.
3. Close the tube and incubate for 10 minutes at room temperature.
4. Briefly vortex the tube and then do a quick spin (less than 5000xg) to concentrate the liquid at the bottom.
5. Store the suspended plasmid at -20°C. The DNA is stable for at least one year from date of shipping when stored at -20°C.

RefSeq: [NM_020782.1](#), [NP_065833.1](#)

RefSeq Size: 6477 bp

RefSeq ORF: 1518 bp

Locus ID: 57542

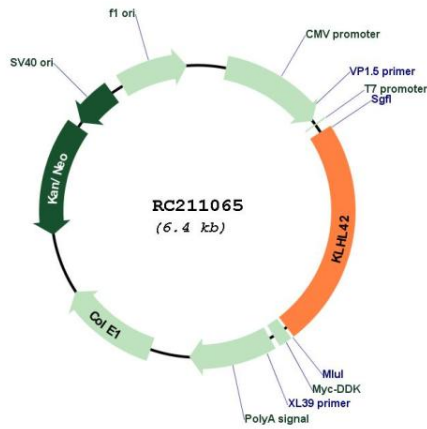
UniProt ID: [Q9P2K6](#)

Cytogenetics: 12p11.22

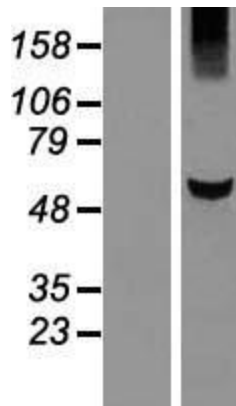
MW: 56.9 kDa

Gene Summary: Substrate-specific adapter of a BCR (BTB-CUL3-RBX1) E3 ubiquitin-protein ligase complex required for mitotic progression and cytokinesis. The BCR(KLHL42) E3 ubiquitin ligase complex mediates the ubiquitination and subsequent degradation of KATNA1. Involved in microtubule dynamics throughout mitosis.[UniProtKB/Swiss-Prot Function]

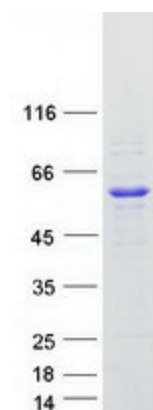
Product images:



Circular map for RC211065



Western blot validation of overexpression lysate (Cat# [LY412337]) using anti-DDK antibody (Cat# [TA50011-100]). Left: Cell lysates from untransfected HEK293T cells; Right: Cell lysates from HEK293T cells transfected with RC211065 using transfection reagent MegaTran 2.0 (Cat# [TT210002]).



Coomassie blue staining of purified KLHL42 protein (Cat# [TP311065]). The protein was produced from HEK293T cells transfected with KLHL42 cDNA clone (Cat# RC211065) using MegaTran 2.0 (Cat# [TT210002]).